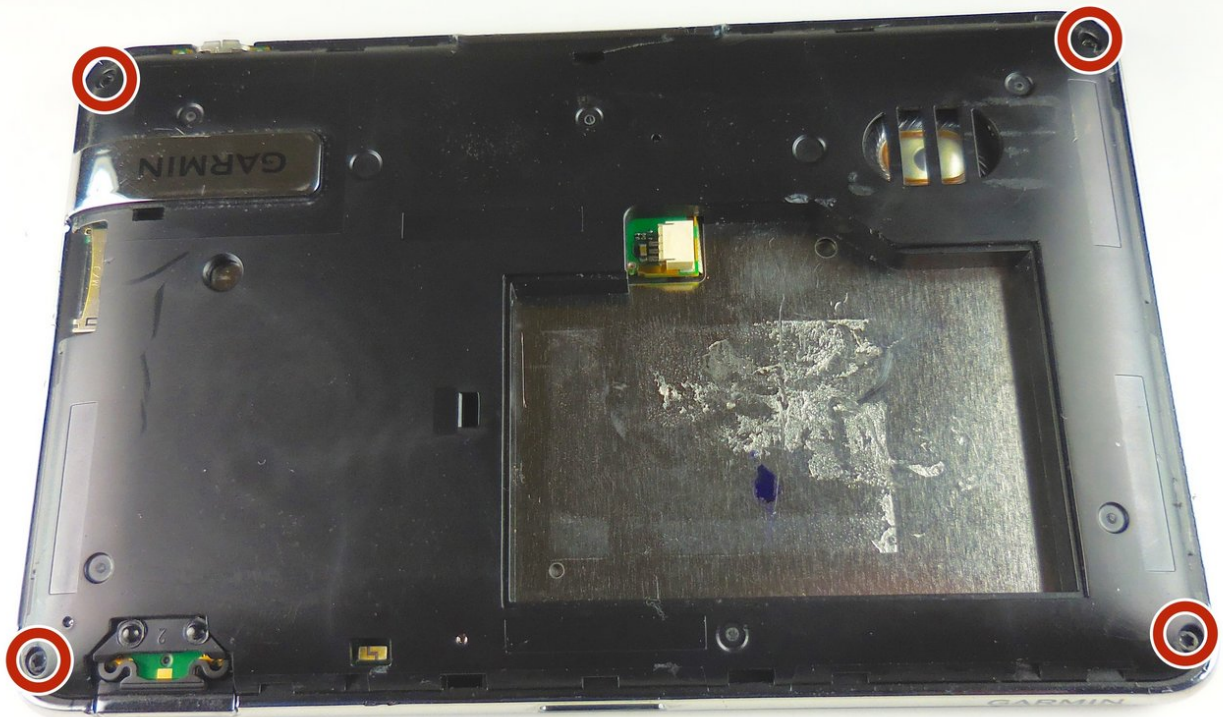




Garmin nüvi 3590 LMT Circuit Board Replacement

Replace the circuit board if your Garmin nüvi 3590 LMT is not working properly.

Written By: Kayla Katz



INTRODUCTION

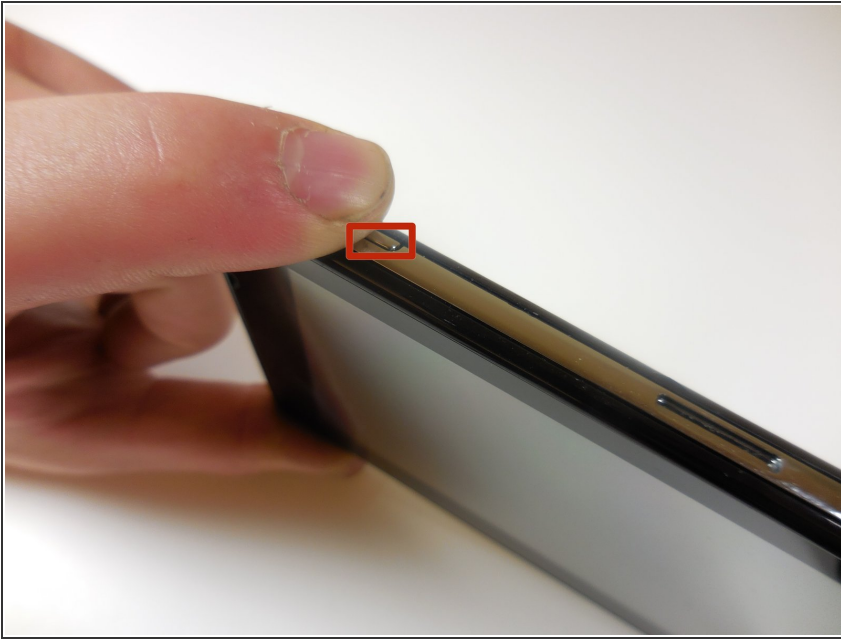
The circuit board and its components are delicate, so use caution when disassembling.



TOOLS:

- [T5 Torx Screwdriver](#) (1)
 - [J000 bit](#) (1)
 - [Heavy-Duty Spudger](#) (1)
 - [Tweezers](#) (1)
-

Step 1 — Battery



- Turn the device off by pressing and holding the power button on the top left of the device.

Step 2



- Use the plastic opening tool to separate the tabs on the black back cover of the device by leveraging the tool against the frame around the perimeter of the device.

Step 3



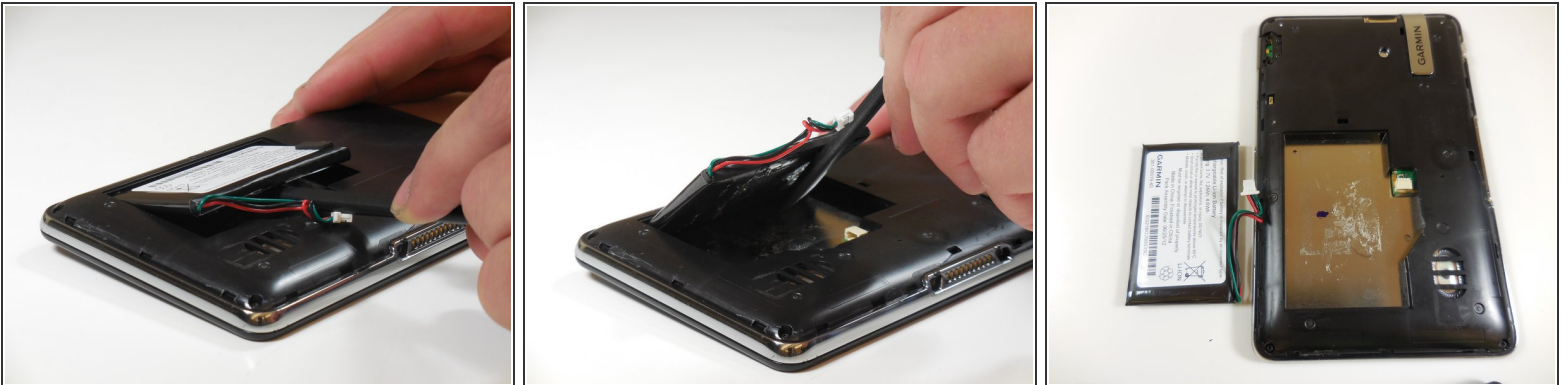
- Once all of the tabs are popped out, take the back cover off.
- ⓘ The back cover is a separate piece from the device.

Step 4



- Using the plastic spudger, carefully remove the white tab connected to the battery from the device by pulling the tab in the opposite direction from which it is connected.

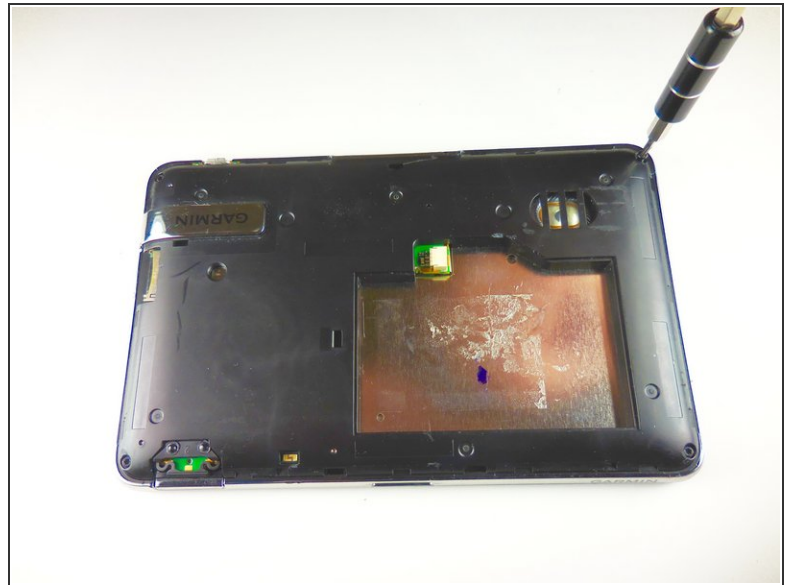
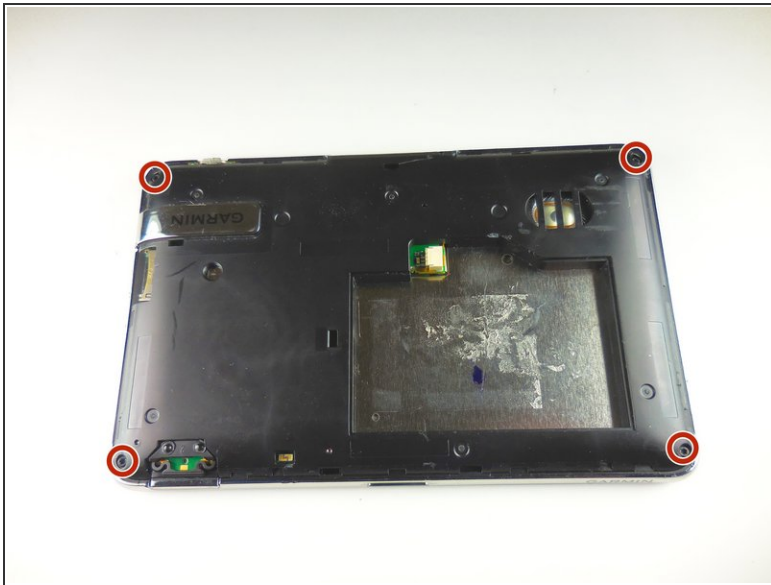
Step 5



- Use the plastic spudger to lift the battery up and away from the device.

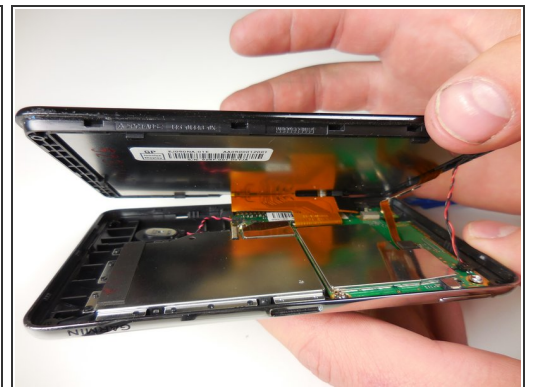
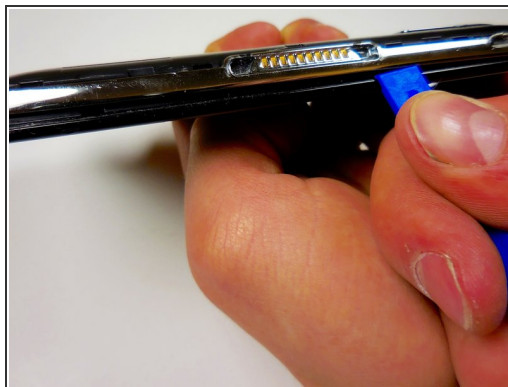
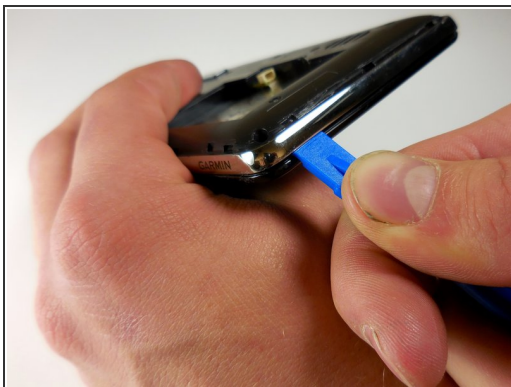
⚠ Do not puncture or bend the battery. Serious health complications could occur.

Step 6 — Circuit Board



- Using the T5 bit, unscrew the four 5.7mm screws in the four corners of the device.

Step 7



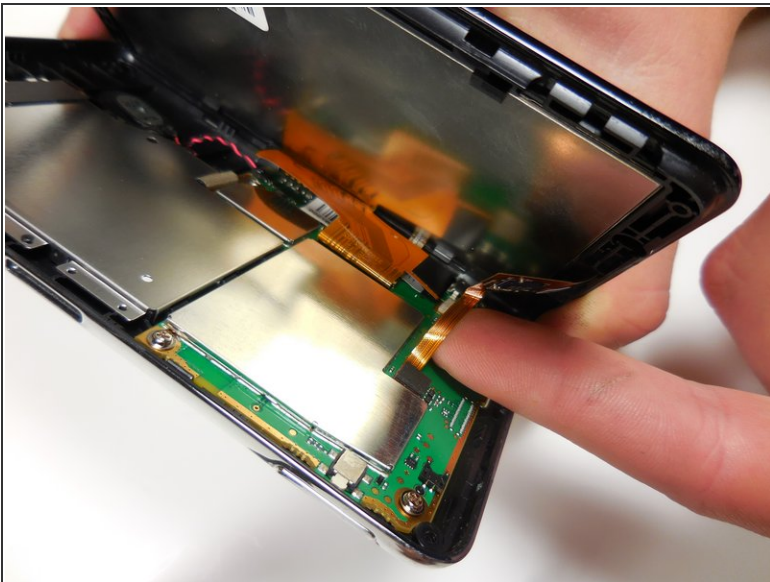
- Leverage the plastic opening tool to pop the tabs between the black screen and the metal frame around the perimeter of the device.
- ⓘ Do not forcibly separate the two pieces after the tabs have been popped as there are connections between the two pieces that could be torn.

Step 8



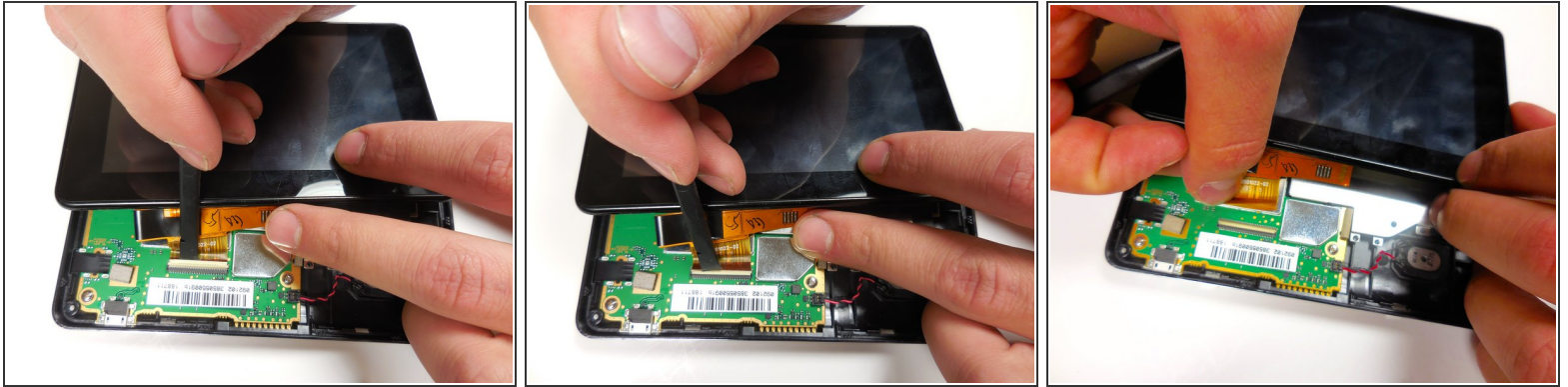
- Using your fingers, remove the red and black wire from the back of the screen.


Step 9



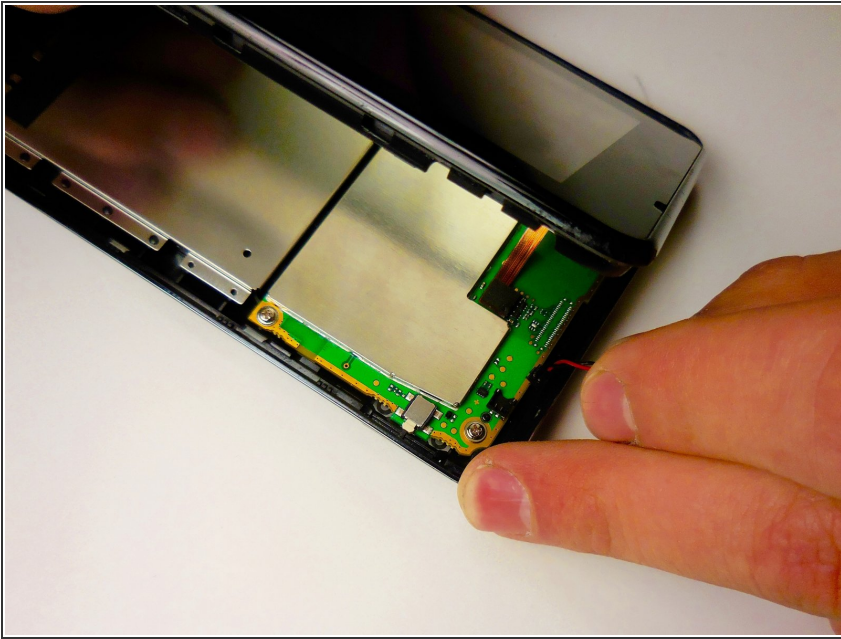
- Pull up on the smaller orange tab with your finger from the circuit board.

Step 10



-  For the larger orange connection, there is a white tab holding the connection to the circuit board.
- Lift this tab gently with the wider tipped tweezers or the plastic spudger and remove the orange connection from the circuit board.

Step 11



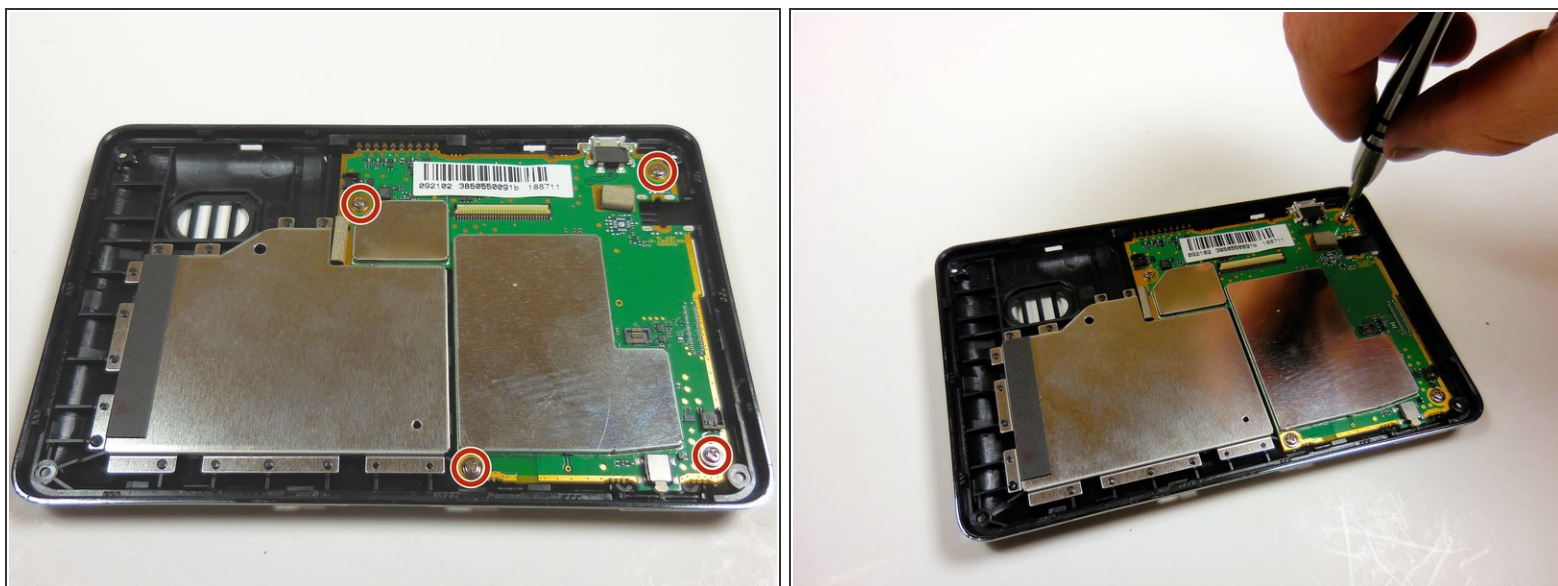
- Locate the red and black wire connected to the logic board with the round, black, rubber disc that connects to the other half of the device. Gently pull the wire up from the logic board.

Step 12



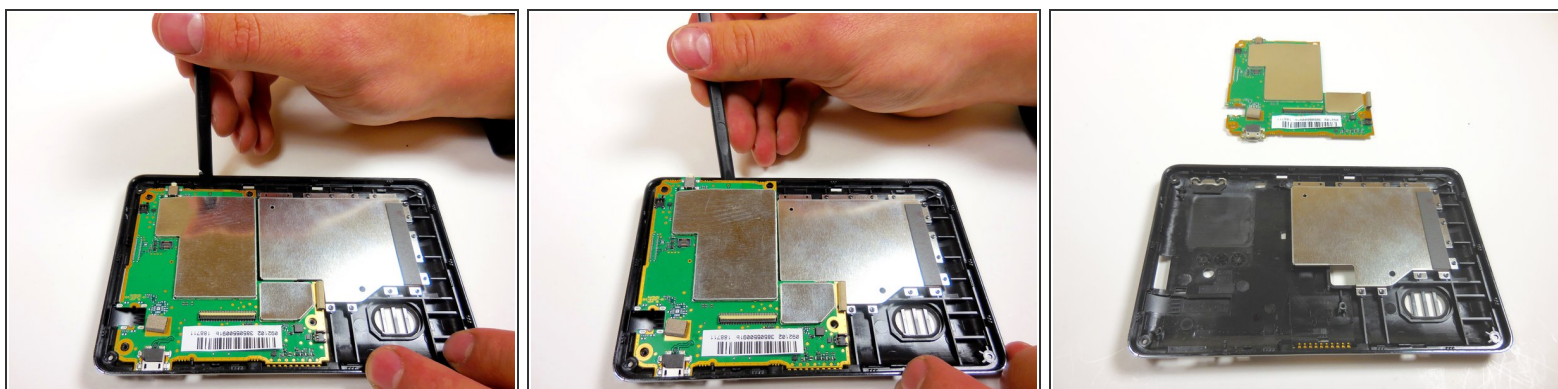
- Separate the connection between the speaker and the logic board by gently pulling the wire up.

Step 13



- Using the J000 bit, unscrew the four 4.0 mm screws from the corners of the logic board.

Step 14



- Starting near the power button, leverage the spudger to pry up the logic board around the perimeter of the frame.

To reassemble your device, follow these instructions in reverse order.