



Hipstreet Titan 2 HD Battery Replacement

This guide will assist users in replacing the battery on a Hipstreet Titan 2 HD Tablet.

Written By: Jeffrey



INTRODUCTION

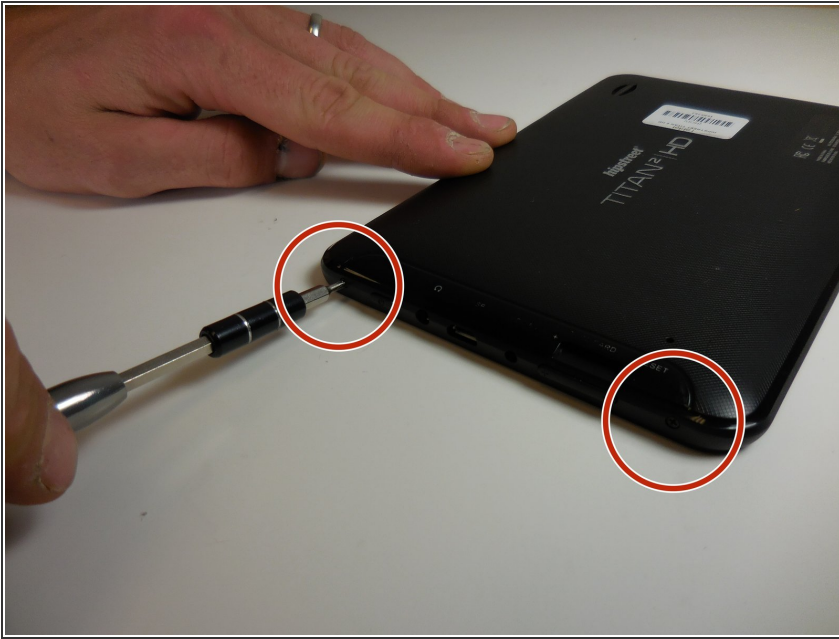
Users must disassemble the front cover to replace the battery. A replacement battery will be needed. This is a difficult process for users who do not have experience with soldering connections.



TOOLS:

- [iFixit Opening Tools](#) (1)
 - [Suction Handle](#) (1)
 - [Soldering Iron](#) (1)
 - [Phillips #00 Screwdriver](#) (1)
-

Step 1 — Rear Case



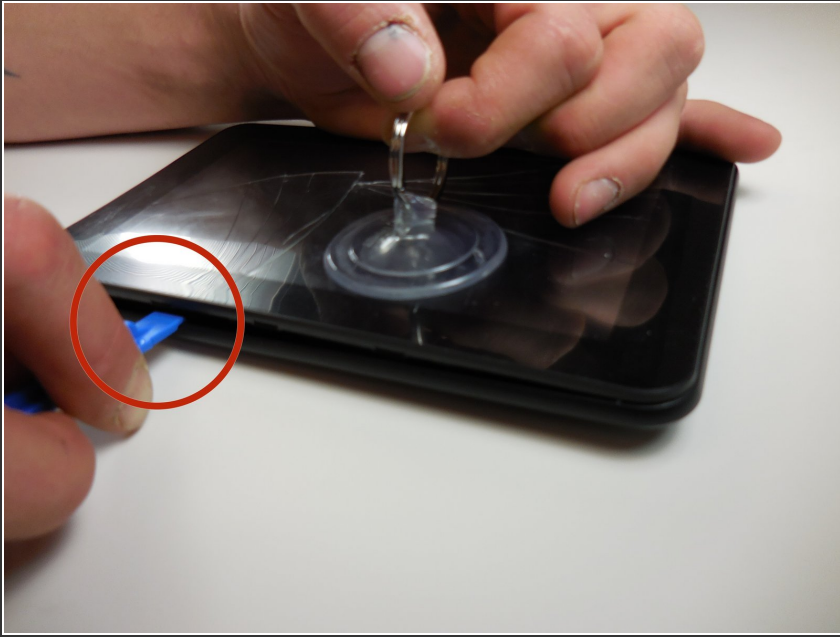
- Using the PH#00 screwdriver, remove the two 0.145 inch Phillips head screws.
- ⓘ The screws are located on the bottom face of the device, near the power and volume controls.

Step 2



- Place the small suction cup on your screen.
- ⓘ Moisturize the bottom of the suction cup to ensure a proper seal.
- ⚠ If the screen is cracked, the suction cup may not seal correctly; too much pressure may crack or damage the screen.

Step 3




- Insert the plastic opening tool between the screen cover and rear cover of the tablet.
- Grasp the small suction cup.

Step 4

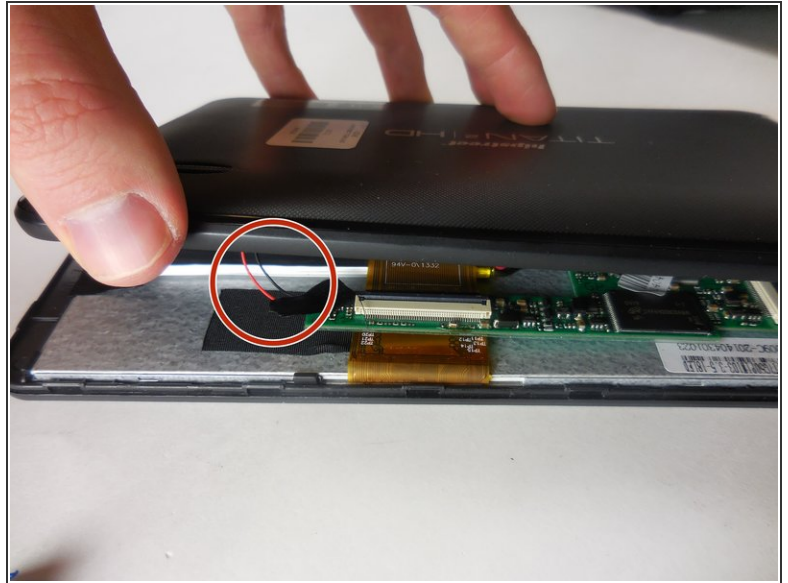
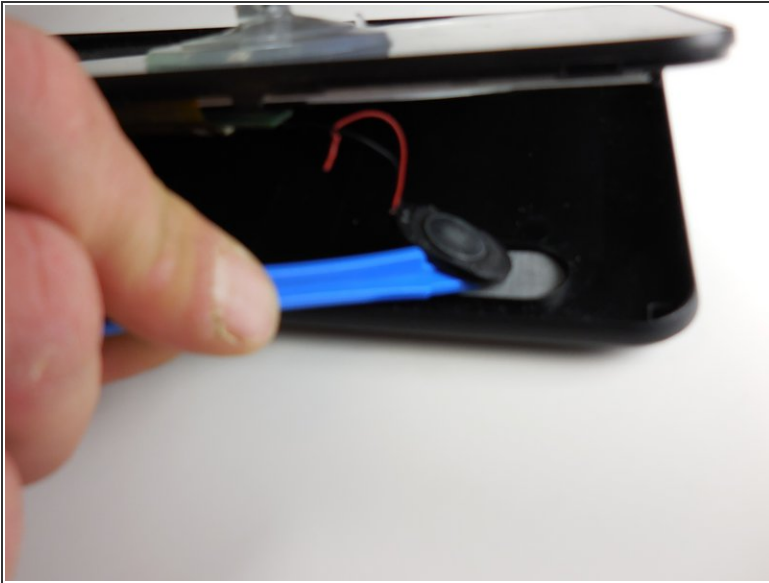


- Slide the plastic opening tool along device edge to separate the screen cover from the rear cover.
- Pull upward on the small suction cup handle while sliding the opening tool.

 When sliding the plastic opening tool, avoid sliding the tool too far into the cover. This could damage the speaker connector on the back cover.

This document was generated on 2020-11-18 05:39:28 PM (MST).

Step 5



- Use the plastic opening tool to remove the speaker from the rear cover.
- ⓘ The speaker is held in place with adhesive and is easily removed.
- ⚠ Do not pull on the speaker wires. This could damage the soldering connections.

Step 6



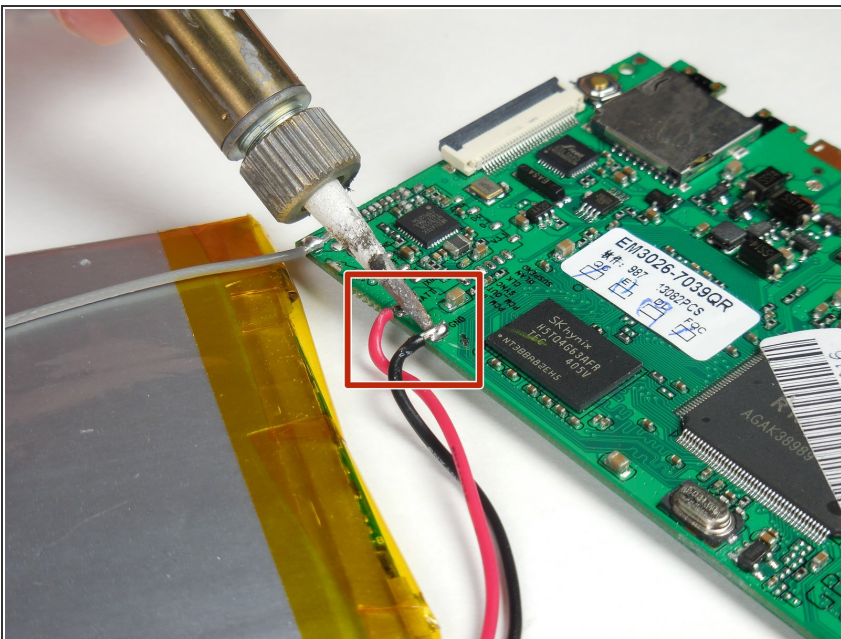
- Once the speaker is disconnected, the cover removal is complete.

Step 7 — Battery



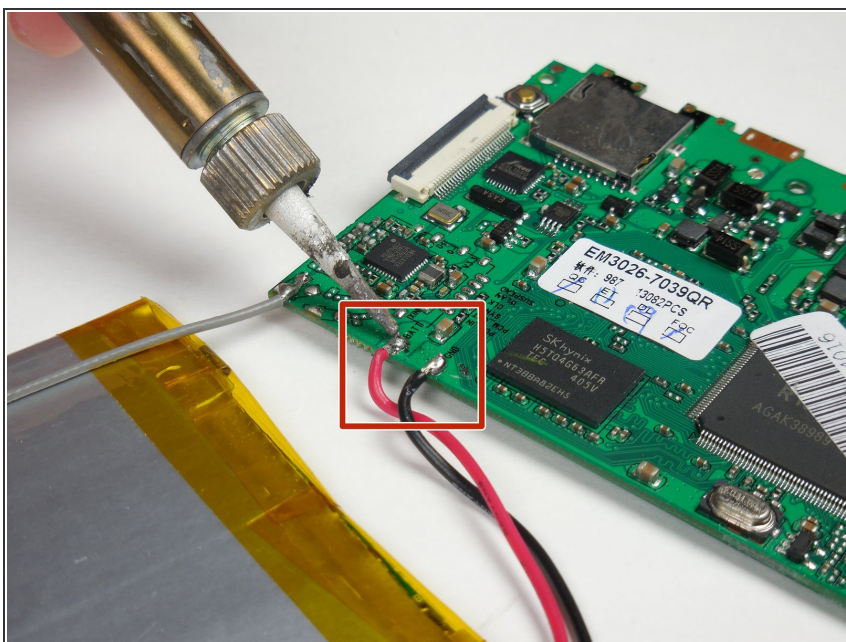
- Remove the black placement tape from the battery.
- Find the two battery solder connections on the circuit board.

Step 8



- Remove the red and black battery wires from the circuit board with the solder removal tool.

Step 9



- Solder the new battery wire connectors to the circuit board.
- ⓘ The battery wires must be installed with the red wire on the left and black wire on the right.

To reassemble your device, follow these instructions in reverse order.