



Hisense Sero 8 Motherboard Replacement

This guide demonstrates how to replace the Motherboard in the Hisense Sero 8.

Written By: Katharina



INTRODUCTION

After extended use, the motherboard may become defunct and the device may require a new one. Follow this guide to remove and replace the motherboard of your Hisense Sero 8.

TOOLS:

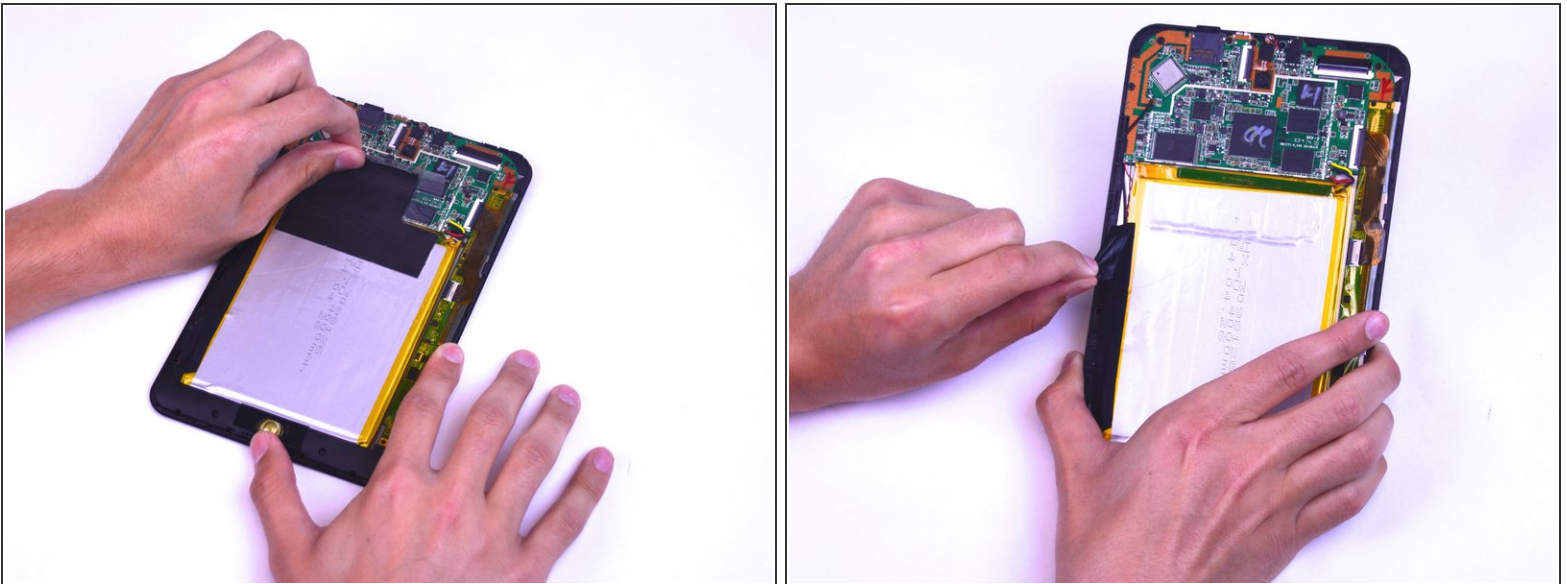
- [iFixit Opening Tools](#) (1)
 - [Phillips #00 Screwdriver](#) (1)
 - [Soldering Iron](#) (1)
-

Step 1 — Motherboard



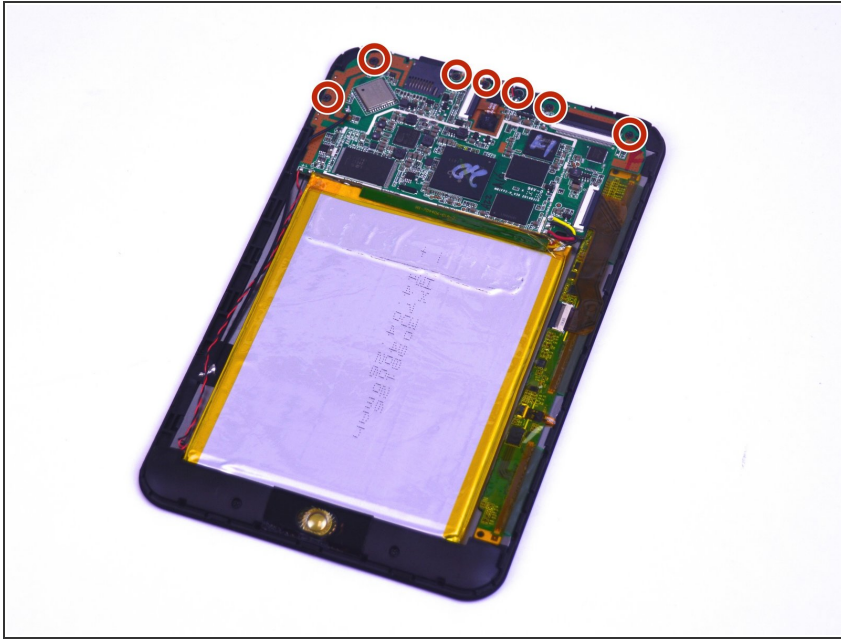
- Remove the back cover of the device using the plastic opening tool.
- Pry open a corner of the device, then continue down the side with the tool to open the device.

Step 2



- Remove the black tape located to the left of the device.
- Remove the clear tape directly below the camera.

Step 3



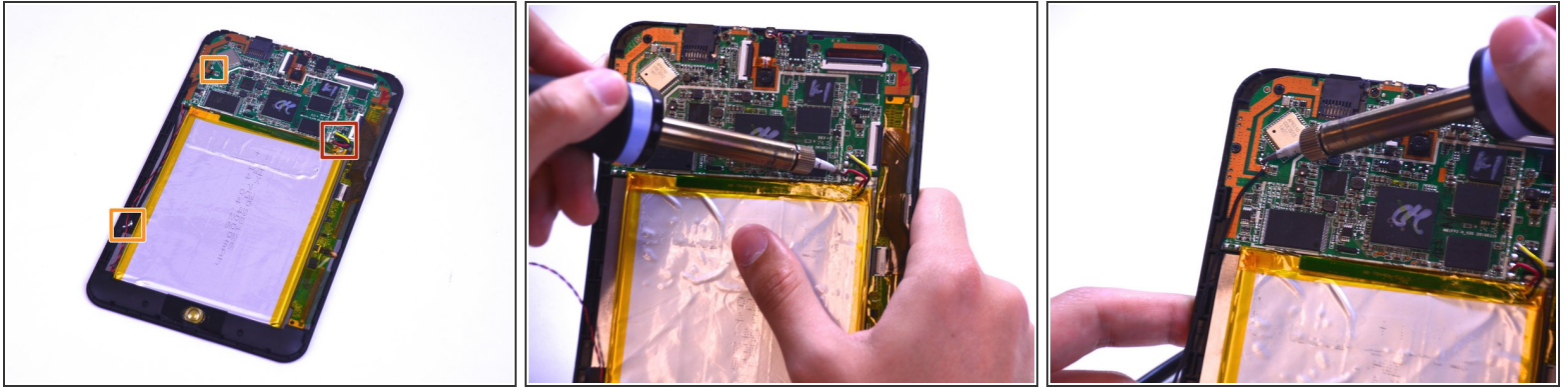
- Remove the seven 4.43mm screws located at the top of the device using the Phillips #00 screwdriver.
- ⓘ There is no need to remove the bottom two screws holding the speakers in place.


Step 4



- Unlock the three ribbon cable connector latches to remove the cables.

Step 5



 Be cautious of the extremely hot tip of the soldering iron.

- Desolder the red, black, and yellow wires to remove the motherboard. Take a look at this [guide](#) to learn how to solder and desolder connections.
- Desolder the black wire located on the top left of the device.
- Once desoldered, carefully lift the motherboard out of the device.

To reassemble your device, follow these instructions in reverse order.