



JBL Flip Battery Replacement

This guide will show you how to remove the battery for the JBL Flip.

Written By: Dillon





TOOLS:

- [Phillips #1 Screwdriver](#) (1)
- [Phillips #2 Screwdriver](#) (1)



PARTS:

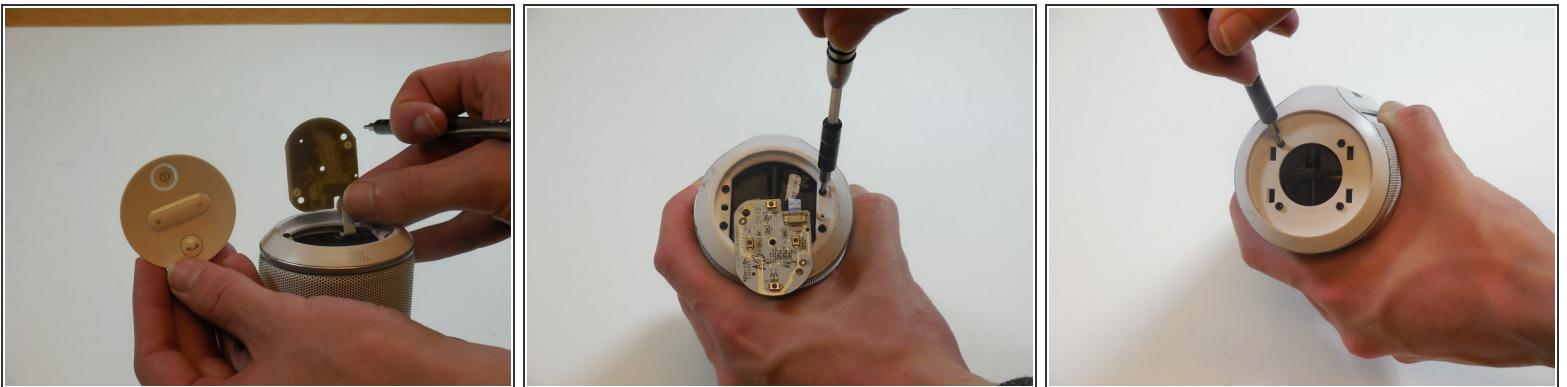
- [JBL Flip Replacement Battery](#) (1)

Step 1 — JBL Flip disassembly



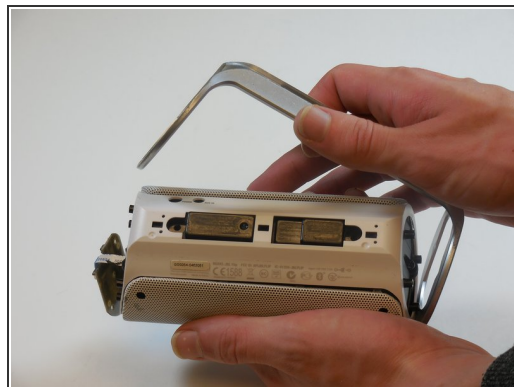
- On the end with the buttons, remove the end cap using the flat head screwdriver to get between the rubber lining and the plastic.
- After the cap is removed, unscrew the two 3.3mm screws using a size 1 ph screw driver.

Step 2



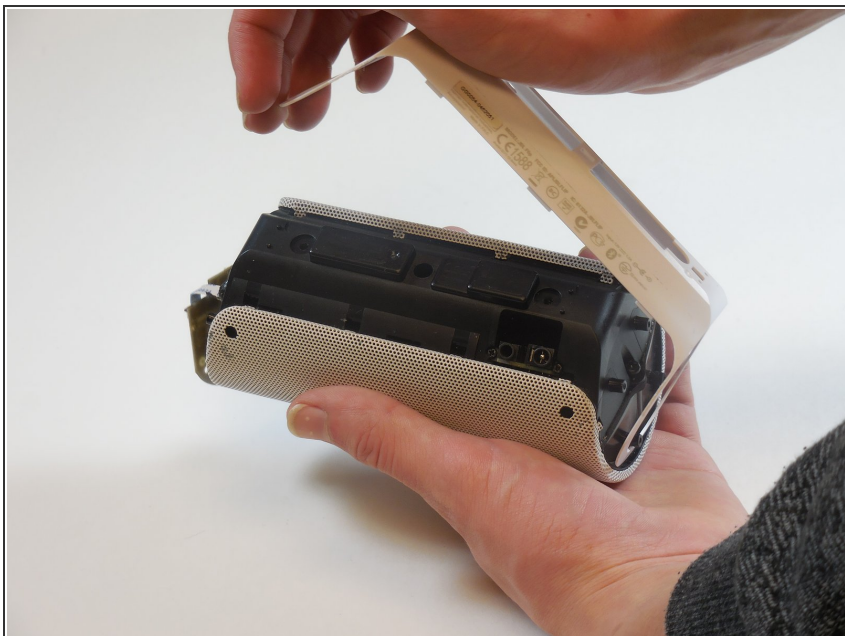
- Unscrew four 3.3mm screws on each end of the JBL using a size 1 ph screw driver (8 screws total).

Step 3



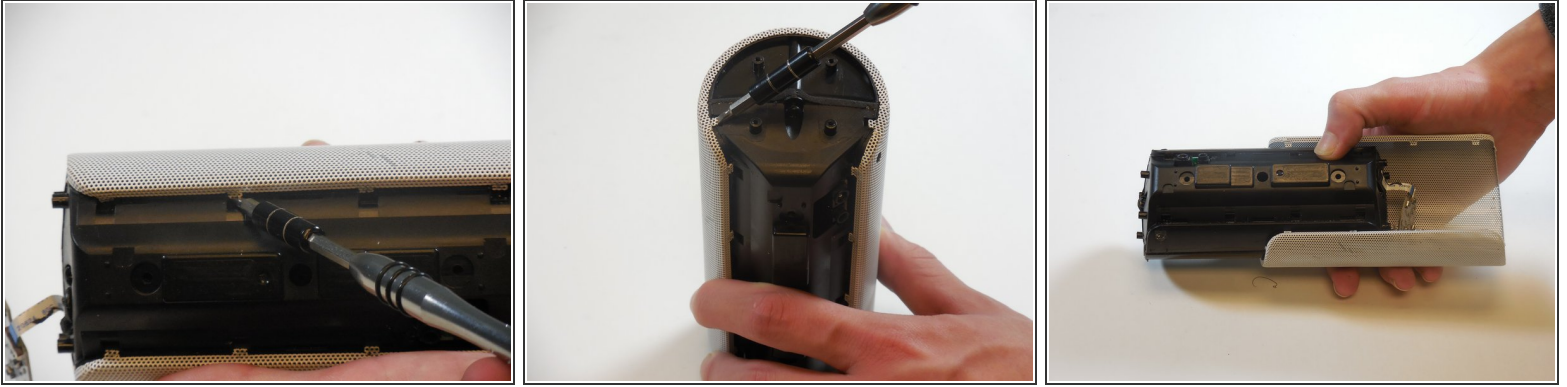
- Remove outermost white casing by gently lifting up on one side.
- Remove two 5mm screws holding the silver back plate in place with a size 2 ph screw driver.
- Gently lift up and remove the silver casing.

Step 4



- Remove last white back plate to expose the back of the speaker cover.

Step 5



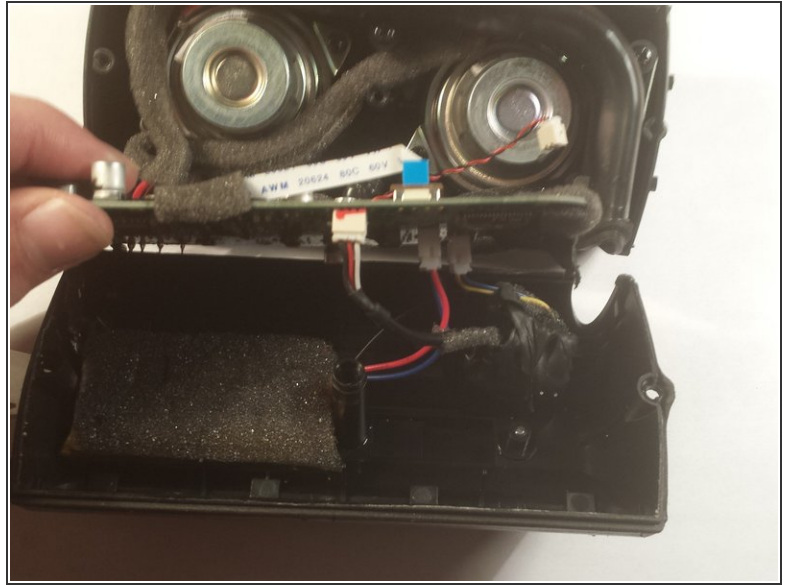
- Pry the four tabs on each side of the speaker cover (8 tabs total).
- Pry the two tabs on each end to remove the cover (4 tabs total).
- Slide speaker out of metal speaker cover.

Step 6



- Remove 5mm screw in the middle of the back of the device with a size 2 ph screw driver.
- Unscrew the two 5mm screws on each side using a size 2 ph screwdriver.
- Open the speaker.

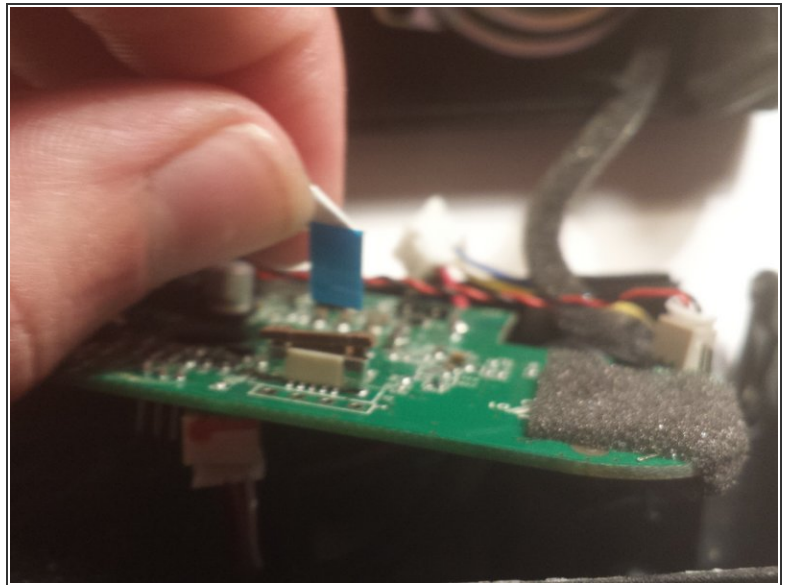
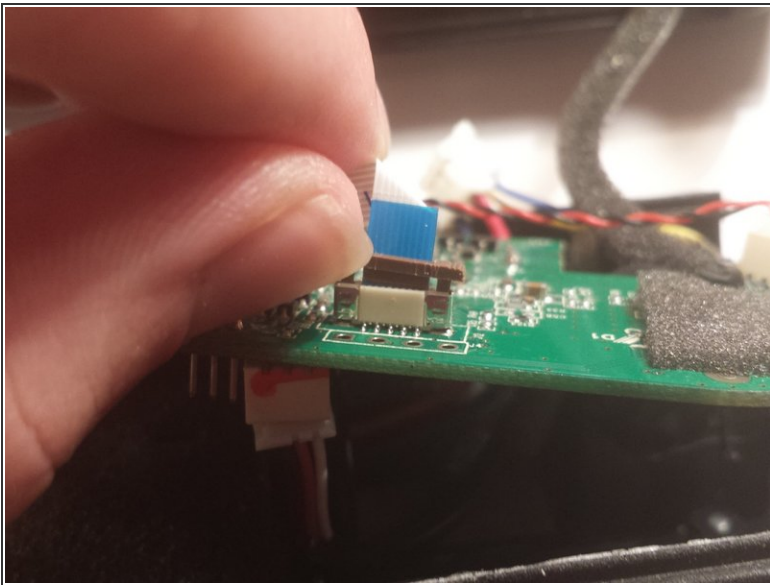
Step 7 — Battery



- Slowly peel the motherboard away from the black glue on the underside.

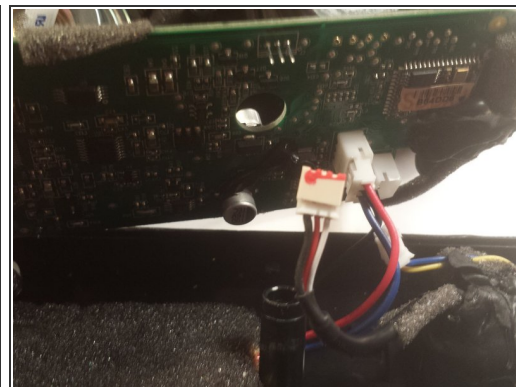
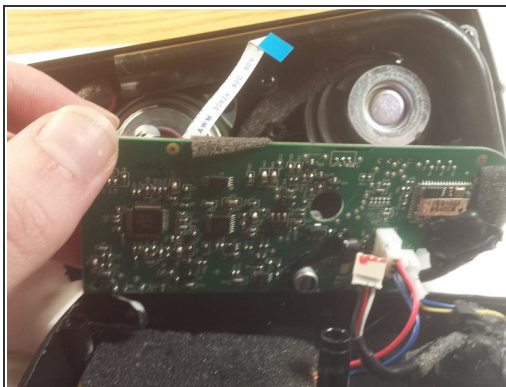
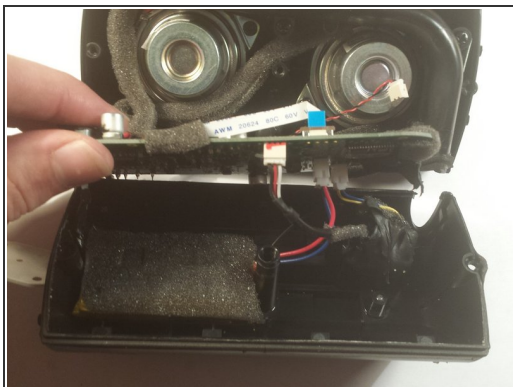
⚠ Make sure the battery below the motherboard is turned off before proceeding.

Step 8



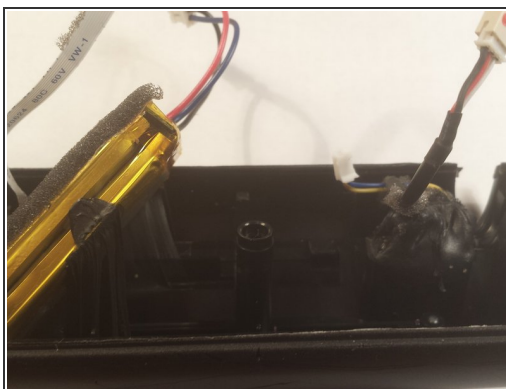
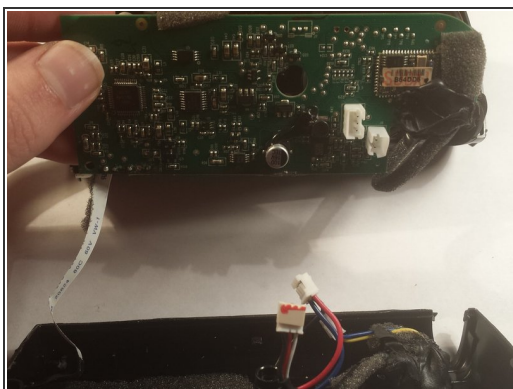
- Push brown tab up and gently pull connector out.

Step 9



- Remove the first two connectors on the underside of the motherboard.

Step 10



- Remove last connector.
- Remove battery and replace.

To reassemble your device, follow these instructions in reverse order.