



# Archos 97 Carbon Display Screen Replacement

If the display screen on an Archos 97 Carbon...

Written By: Allyson Seber



# INTRODUCTION

If the display screen on an Archos 97 Carbon tablet is damaged, this guide can aid in replacing the damaged display.

If you are looking to simply reassemble an already removed display screen, you may proceed to Step 5 - Step 1, backward.

Before beginning to remove or replace the damaged display, make sure that the device is completely powered off and that it is not connected to any charging ports or headphone ports. We recommend replacing the display in a well-lit environment to ensure that you can see the repairs you are making on the device.



## TOOLS:

[Tweezers](#) (1)

[Screwdriver](#) (1)

[iFixit Opening Tool](#) (1)

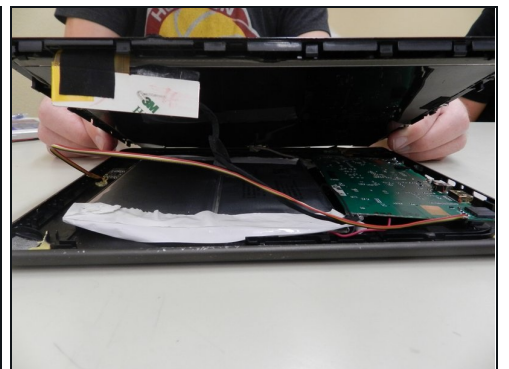
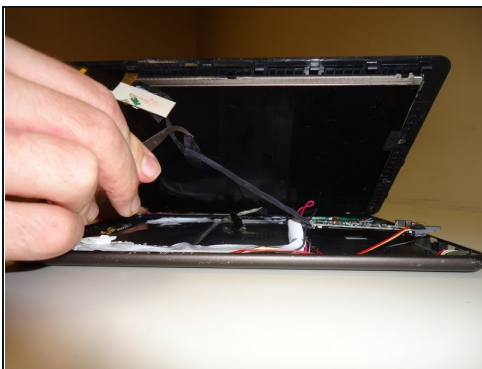
---

## Step 1 — Removing the old cover from tablet



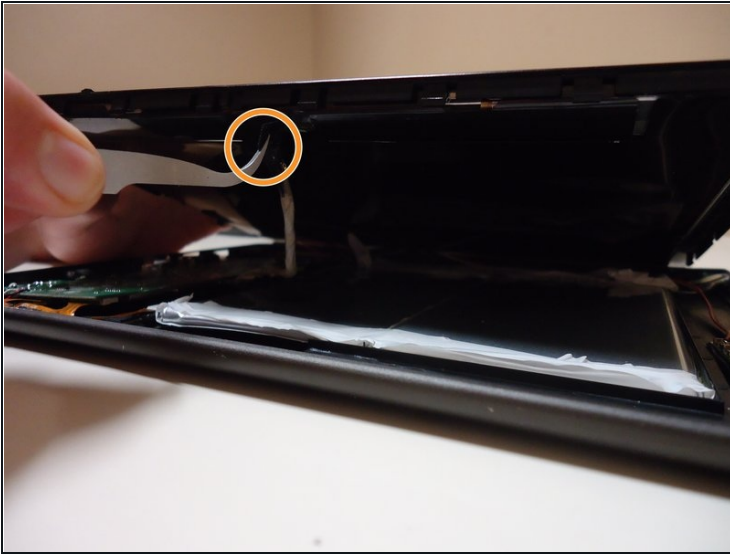
- Lay your tablet upwards facing you.
- Using the opening tool, begin by prying the tablet starting in the top left corner. This can be found near the volume and power buttons.
- Begin to work your way around the tablet in a clockwise motion to separate the screen from the cover.

## Step 2 — Removing the white tab from tablet



- Once you have opened the screen, you will see two cables that connect the screen and the interior of the tablet.
- Remove the white tab located on the right side of the interior by removing the tape and plug that connects it to the tab.

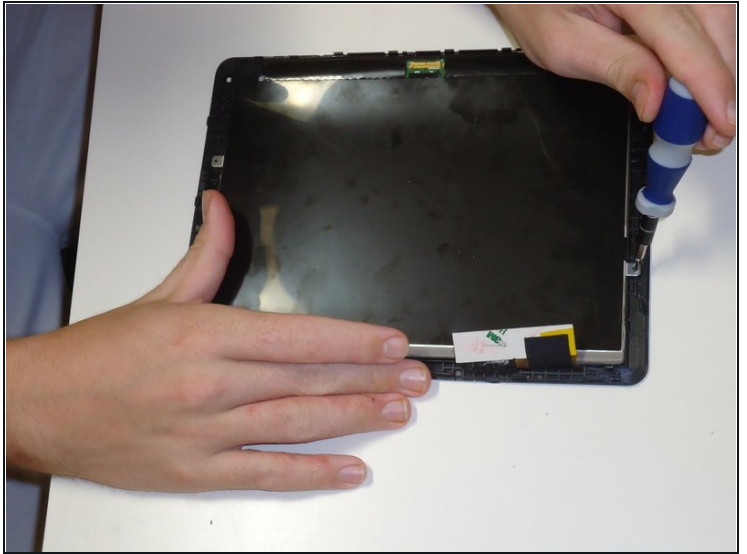
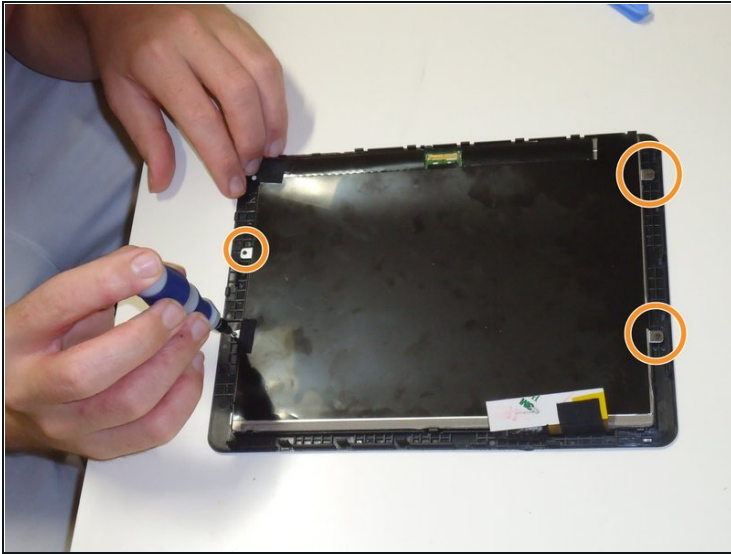
### Step 3 — Removing the black tape from the tablet



- ① On the left side of the tablet, you will see a silver cable connecting the screen to the motherboard.
- Using the [tweezers](#), remove the black tape that is connecting the cable and screen. This will allow the gold connector to come loose.
- ① The screen should be separated from the tablet.



## Step 4 — Removing the screws



- Remove the screws on the backside of the screen using a screwdriver.

ⓘ There are four screws; one is covered by tape.

## Step 5 — Removing screen from frame



- Gently pry the screen from the black frame that surrounds it using the opening tool.
- Work in a clockwise motion until the screen is detached from the frame.

To reassemble your device, follow these instructions in reverse order.