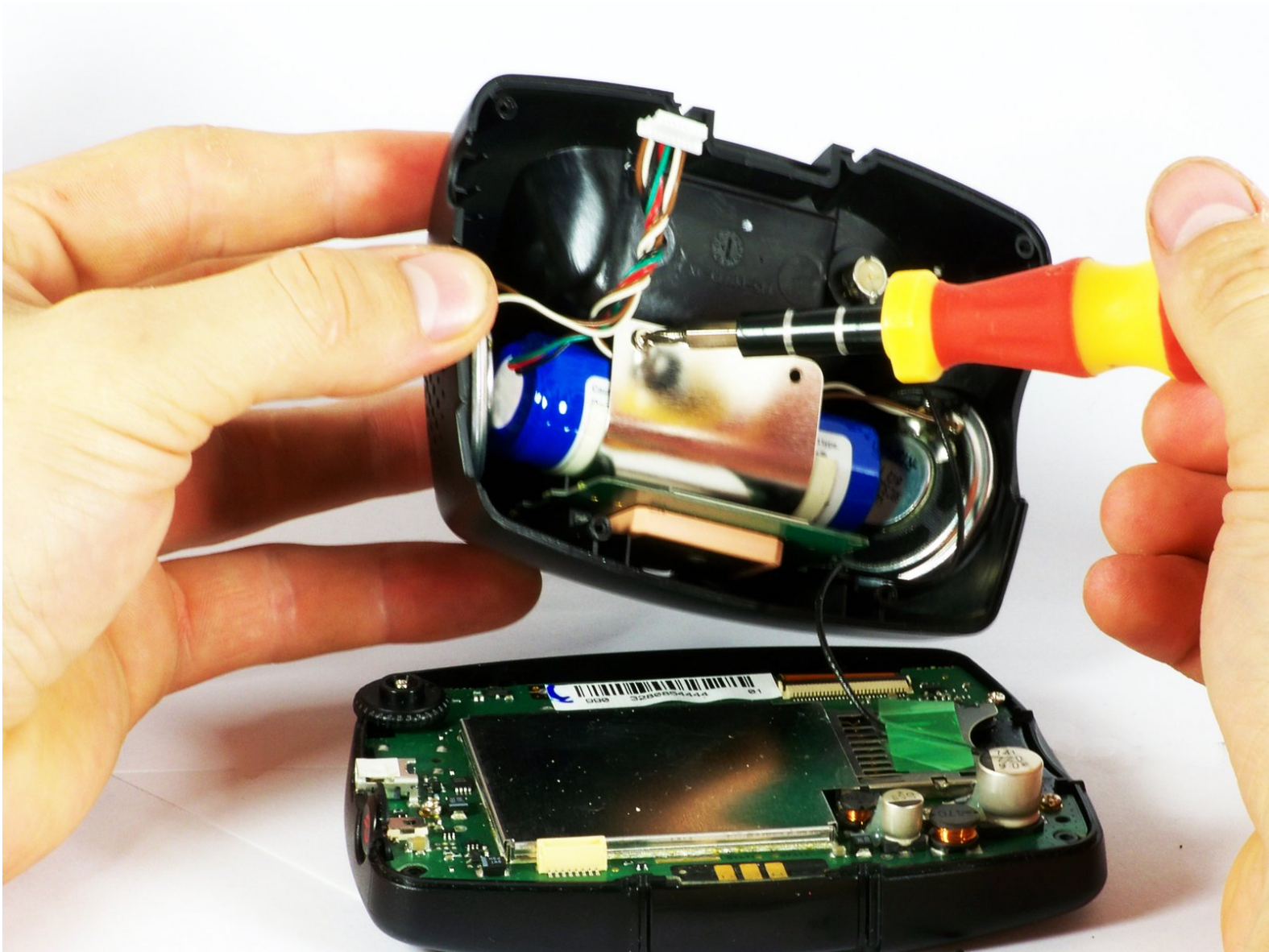




Garmin StreetPilot c330 Battery Replacement

Use this guide to replace a full or faulty...

Written By: Adrian Leon



INTRODUCTION

Use this guide to replace a full or faulty battery in your Garmin StreetPilot c330

The Garmin StreetPilot c330 is a device that comes with automatic route calculation to any destination, and turn-by-turn voice-prompted directions. If your Garmin StreetPilot c330 no longer stays turned on if unplugged despite being charged for a reasonable amount of time. This is usually a sign of an old or damaged battery. In this case, replacement is necessary.

Before using this guide, make sure to review the [troubleshooting page](#)—oftentimes, problems with loose charging cables or damaged charging cables could cause a problem.

A punctured battery can cause a dangerous fire. If your battery is swollen, [take appropriate precautions](#).

Make sure to power down your device before you begin.



TOOLS:

- [Phillips #00 Screwdriver](#) (1)
 - [Soldering Workstation](#) (1)
 - [Spudger](#) (1)
 - [Tweezers](#) (1)
-

Step 1 — Outer Casing



- At the top of the outer frame, insert the plastic spudger into the groove in the center.
- Lever the frame gently until it pops out of the case.

Step 2



- Use a Phillips #00 screwdriver to remove the four screws around the screen.

Step 3



- Gently pull from both ends of the casing to separate the front and back panels.

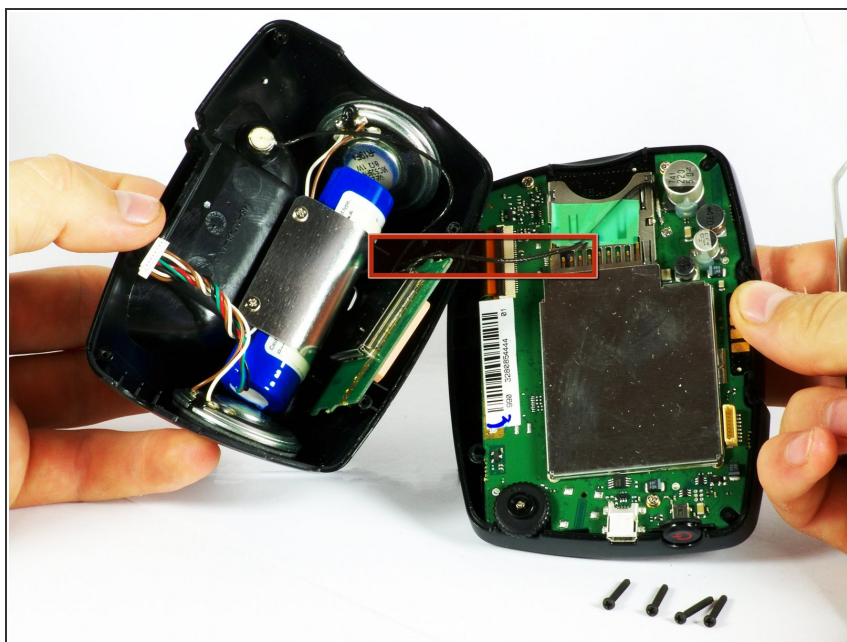
⚠ Do not force the pieces apart wider than the length of the connecting wires, or you will damage the wiring.

Step 4



- Gently unplug the white cable connector using either your fingers or tweezers.

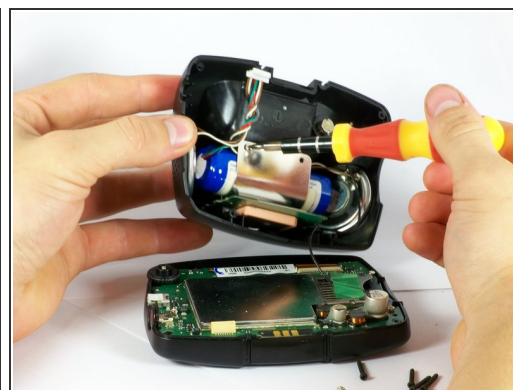
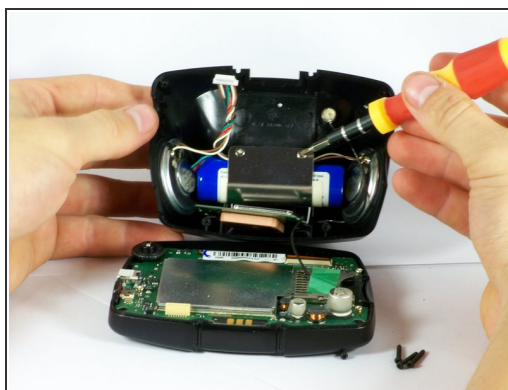
Step 5



- Carefully expose both halves of the device.

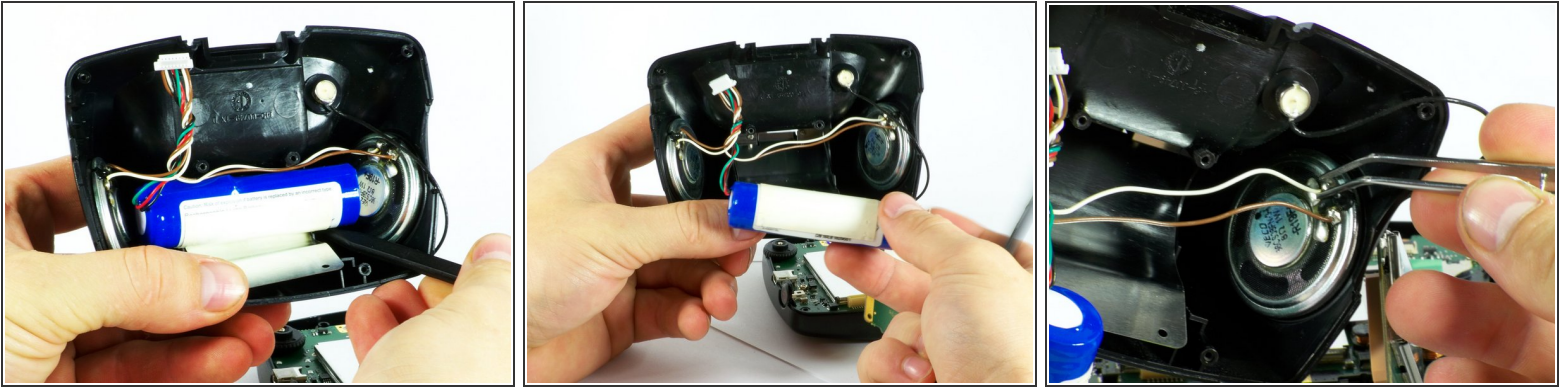
⚠ Be sure not to pull the two halves apart further than the black wire can reach.

Step 6 — Battery



- Use a Phillips #00 screwdriver to remove the two screws from the battery bracket.

Step 7



- Carefully peel the metal bracket away from the battery.
- Pull the battery away from the back cover.
- Desolder the wires from the speakers using a [soldering iron](#).

To reassemble your device, follow these instructions in reverse order.