



LexiBook Tablet One Camera Replacement

Quickly and easily replace the camera in your LexiBook Tablet One.

Written By: Jordan



INTRODUCTION

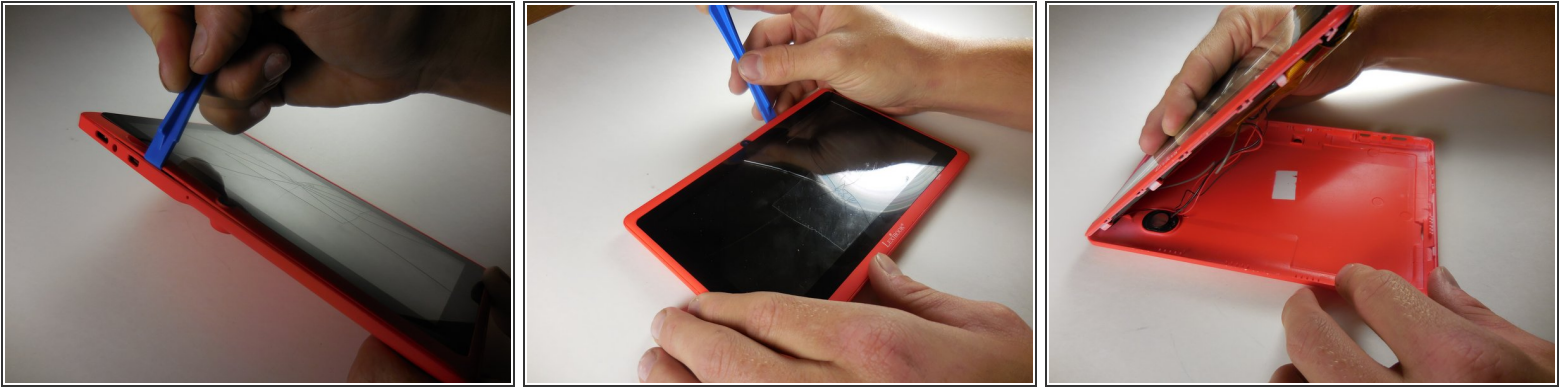
In this guide you will learn the basics for replacing the camera in the LexiBook Tablet One. This guide will include removing the battery. A plastic spudger and pencil may be useful for this guide.



TOOLS:

- [Spudger](#) (1)
 - [iFixit Opening Tools](#) (1)
-

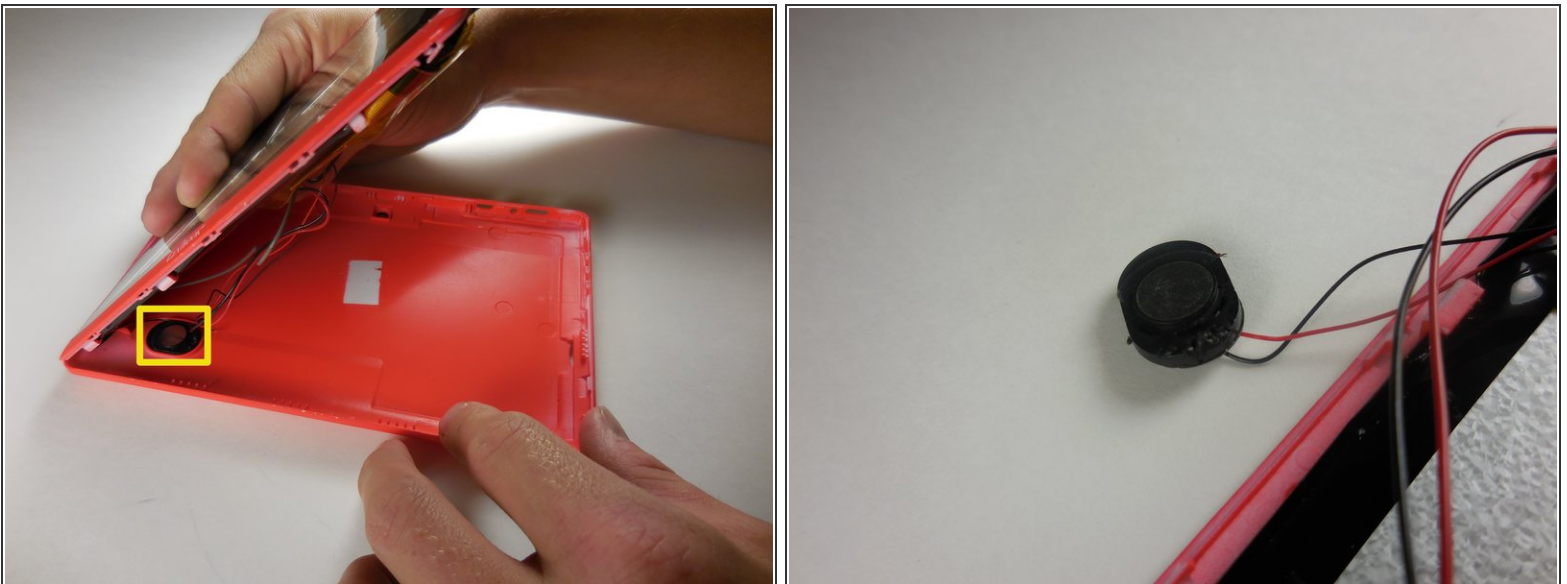
Step 1 — Camera



- Find the seam in the casing. Insert the blue plastic opening tool, and slide to either side carefully undoing the clips. The clips are hidden within the casing and are spaced roughly 1.5 in. apart.

⚠ When opening the device, be wary of the speaker wire. It is best to open the device from the right side with the camera oriented to the top.

Step 2





- Insert a spudger between the speaker and the casing. Gently pop the speaker out, and set the panel to the side.

Step 3

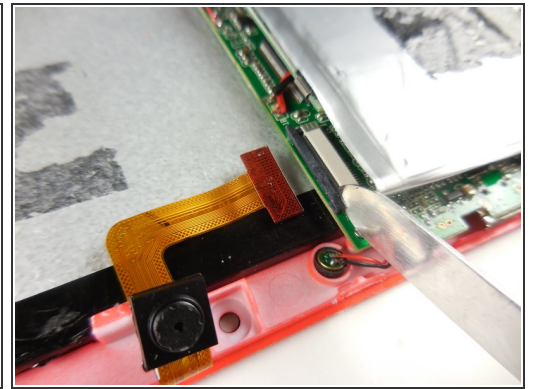
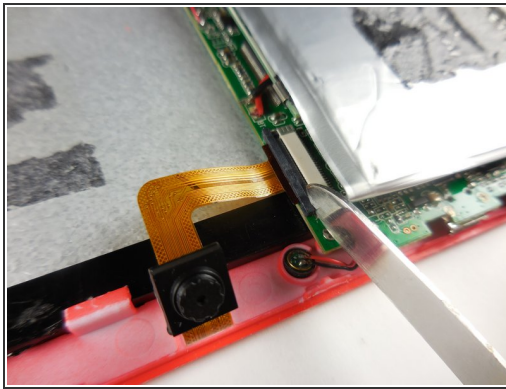
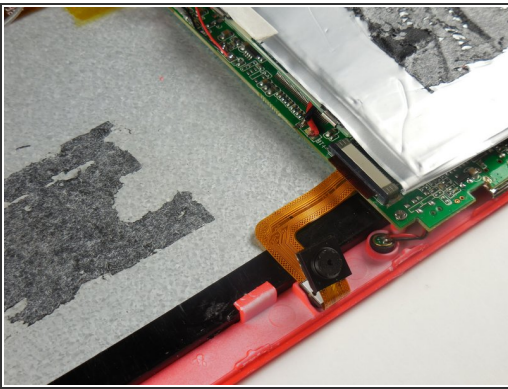


- Using a plastic spudger, wedge the tool between the battery and LCD. Repeatedly gouge and work around the edges of the battery until the adhesive breaks free. You will have to apply generous pressure, as long as you push horizontally the components should not be further damaged.

 Be careful not to damage any wires or to puncture the battery casing when peeling the adhesive.

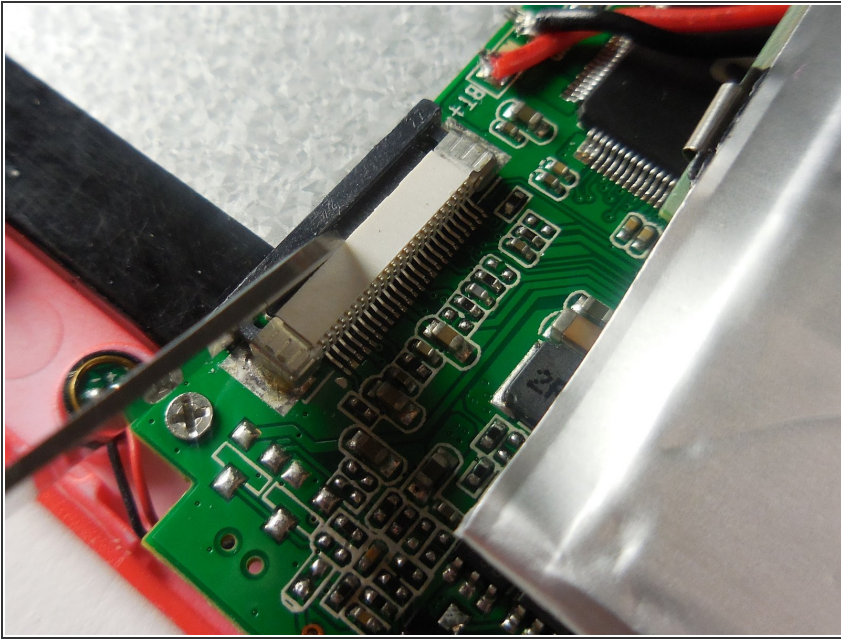
 A similar flat tool can be used in place of a plastic spudger.

Step 4



- Remove the ribbon cable leading to the camera by carefully using a flat headed tool to open the ribbon clip.
- Gently slide the ribbon cable out while holding the clip open.

Step 5



- When inserting your new camera, maintain the clip's open position and slide the new ribbon cable in.
- ⚠ It is imperative the clip not close partially when installing the new ribbon, or the new cable can be damaged.
- ⓘ When the ribbon can go no further into the clip, close the clip.

To reassemble your device, follow these instructions in reverse order.