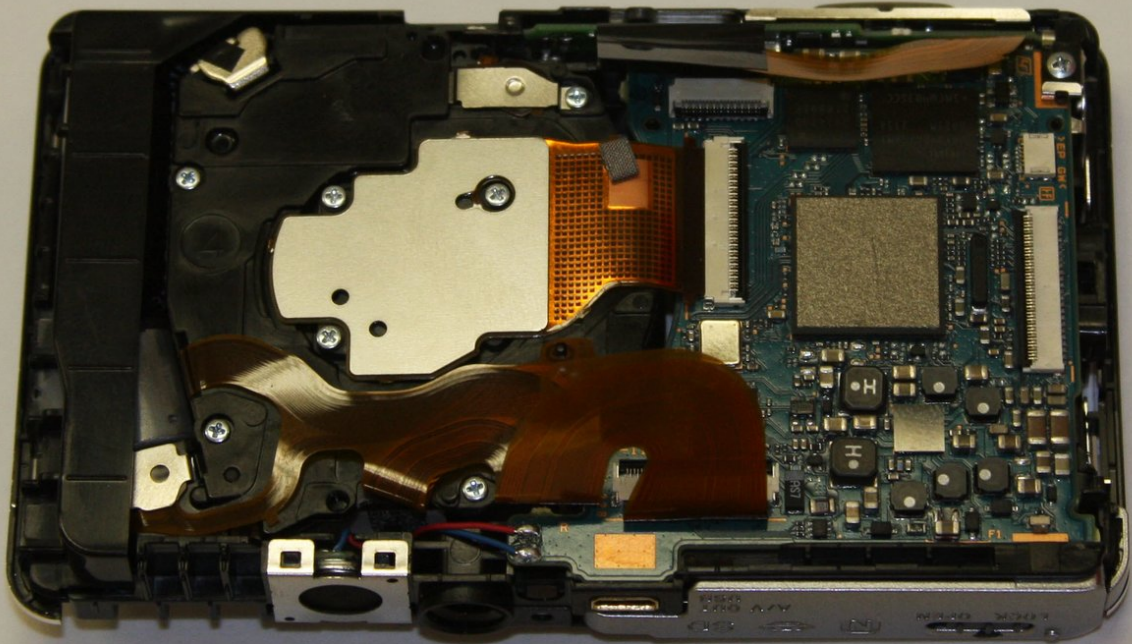




# Sony Cyber-shot DSC-W690 Motherboard Replacement

This guide will show you how to remove and replace the motherboard.

Written By: Will Norris

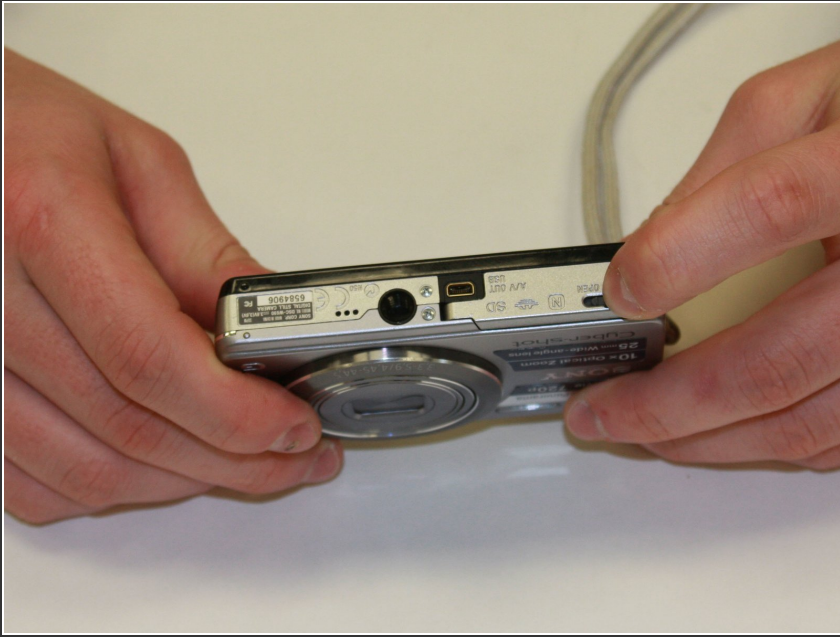




## TOOLS:

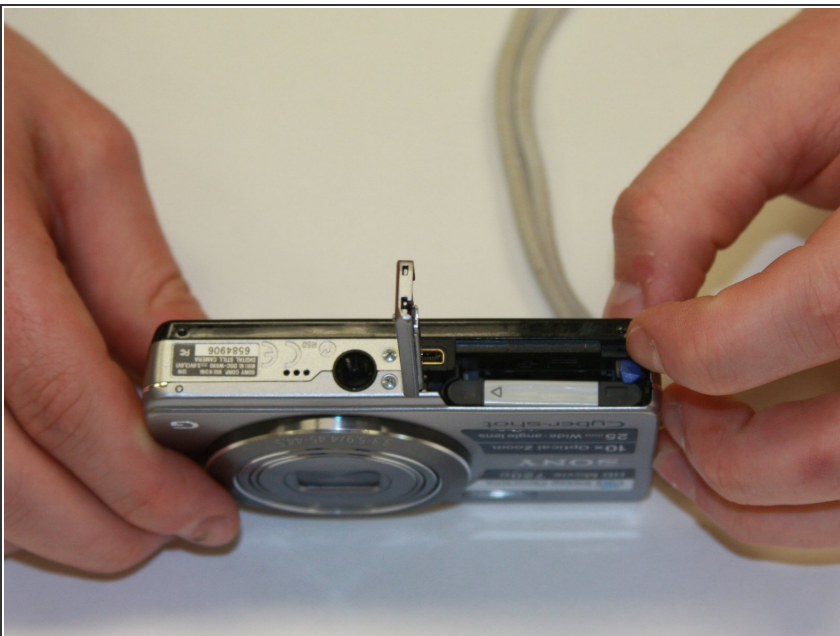
- [Phillips #00 Screwdriver](#) (1)
  - [Spudger](#) (1)
-

## Step 1 — Battery



- Open the battery door.

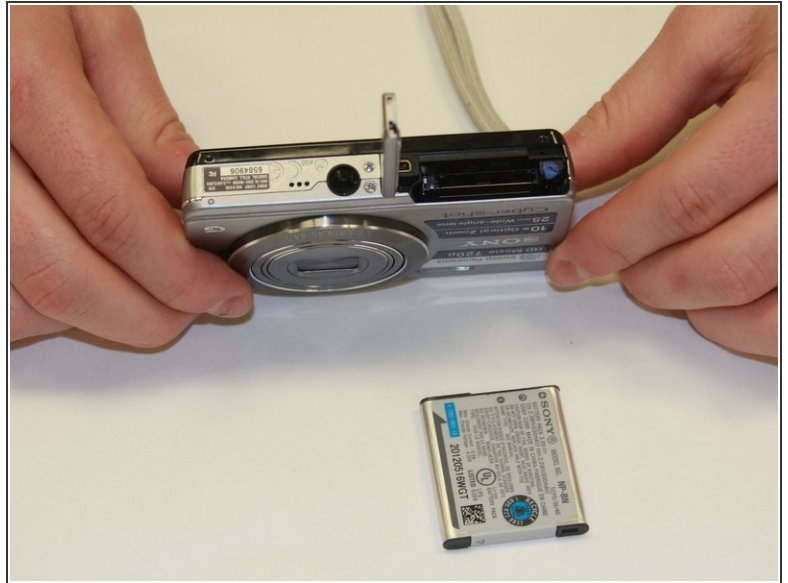
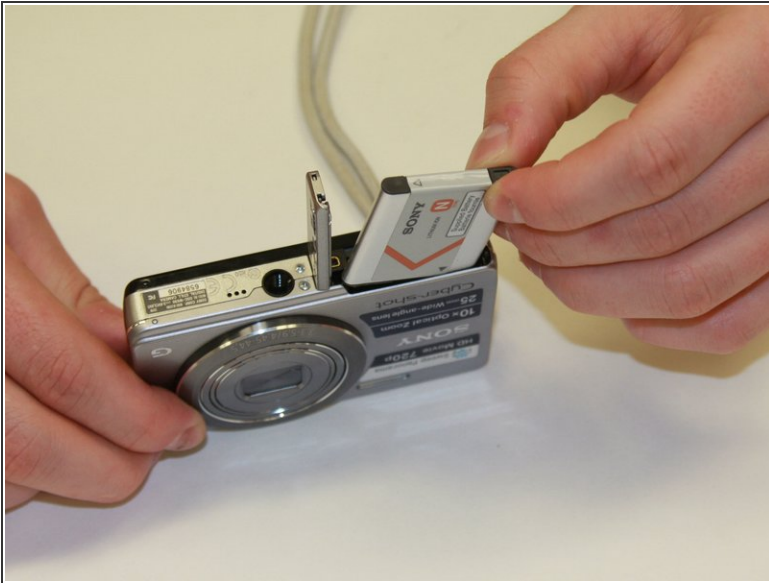
## Step 2



- Open the battery lock to release the battery.

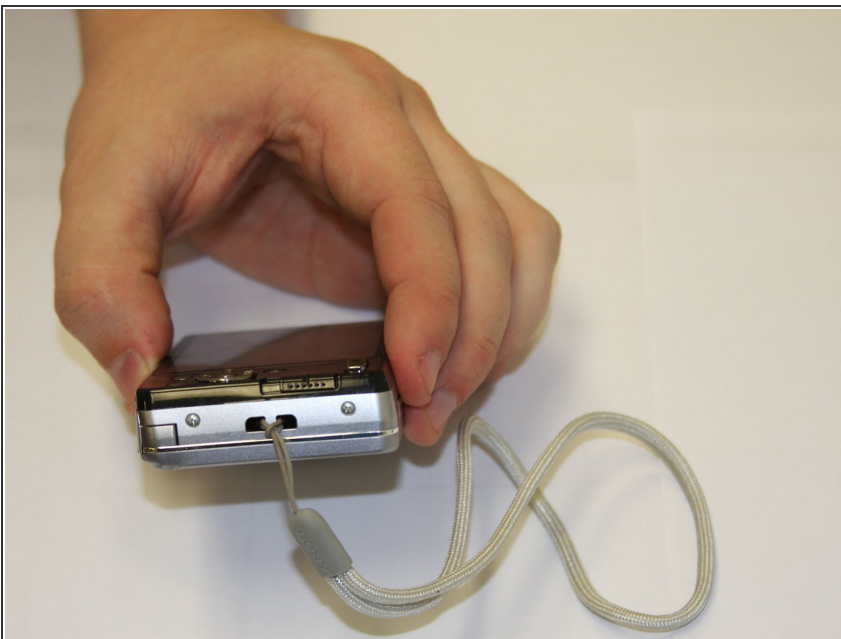


## Step 3



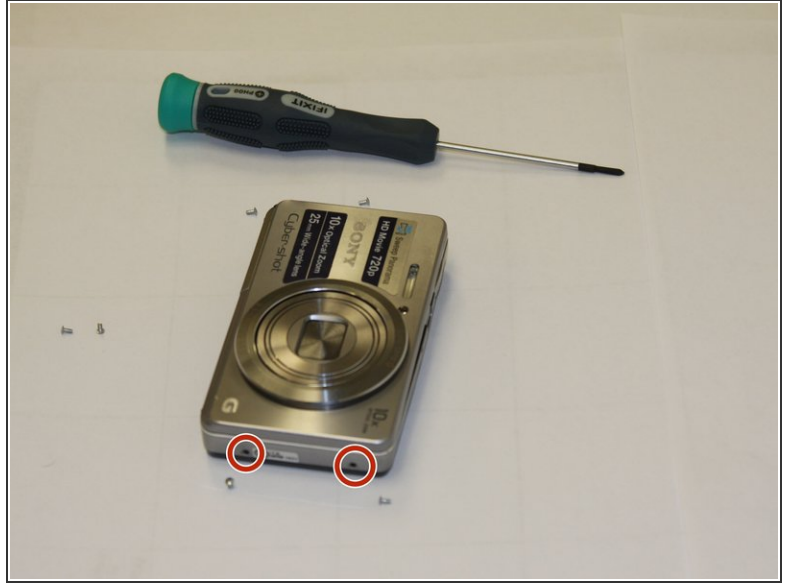
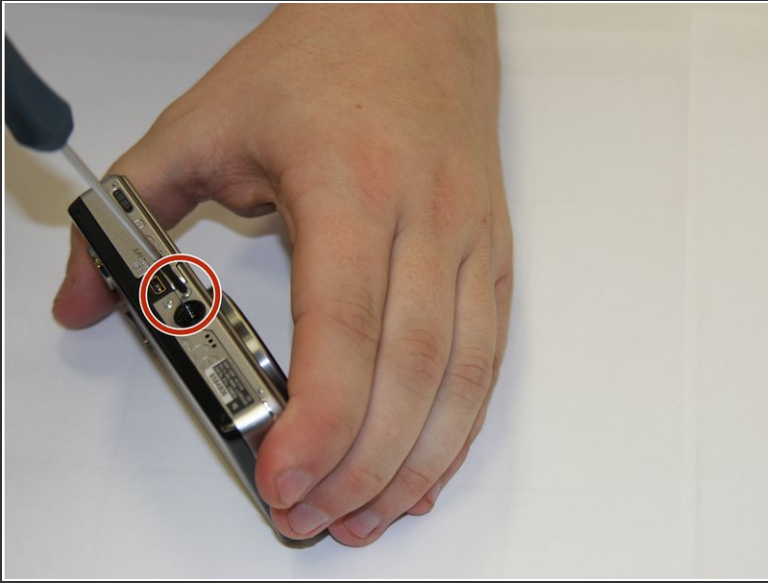
- Remove the battery.

## Step 4 — Front and Back Case



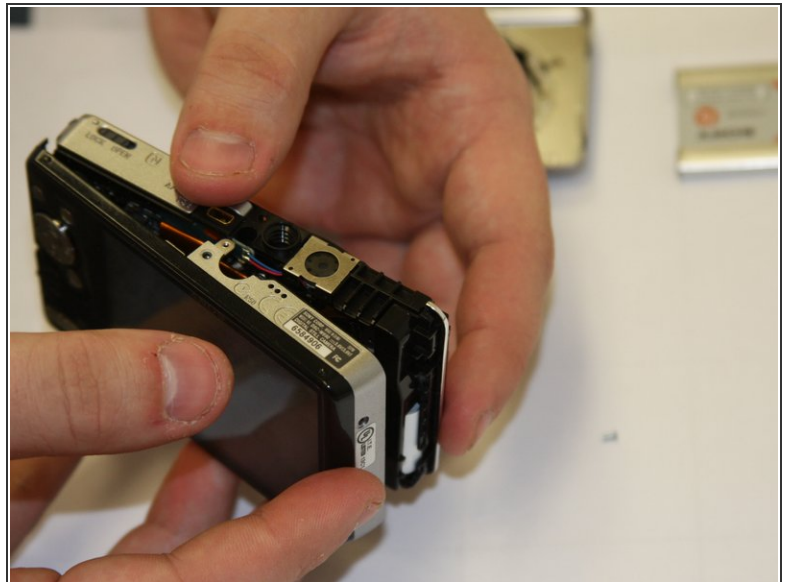
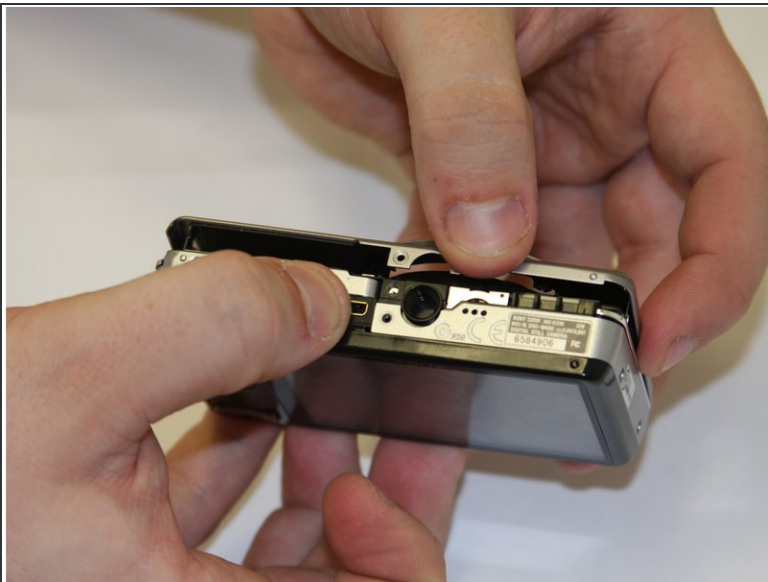
- Remove the wrist strap

## Step 5



- Remove all 6 3mm outside screws

## Step 6



- Carefully pry the case apart.

## Step 7 — Motherboard



- Carefully remove and replace the motherboard.

To reassemble your device, follow these instructions in reverse order.