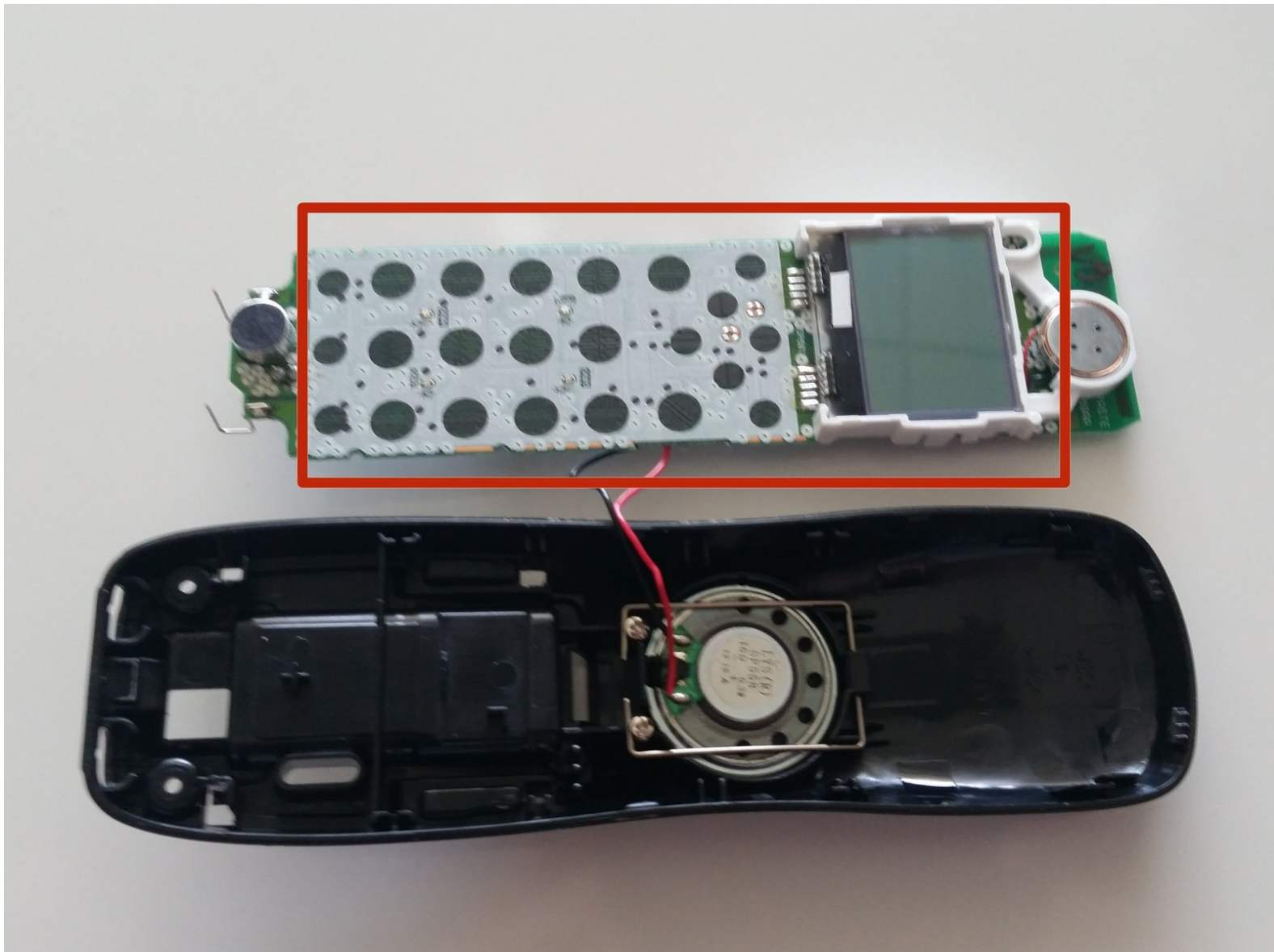




Uniden D1483-3BK Circuit Board/Screen Replacement

This guide gives step by step instructions on how to replace the circuit board/screen of a Uniden D1483-3BK handset.

Written By: Arbitrary Name



INTRODUCTION

To complete this guide you will have to disassemble the handset and use a soldering iron to replace the circuit board. Other than the soldering process, the guide steps are medium in difficulty to complete. After completing this guide, users should have a fully operating, handset circuit board and screen.



TOOLS:

- [Phillips #1 Screwdriver](#) (1)
 - [iFixit Opening Tools](#) (1)
 - [Soldering Iron](#) (1)
 - [Solder](#) (1)
 - [Desoldering Braid](#) (1)
-

Step 1 — Battery



- Set the phone with dial keys facing downward.

Step 2



- Slide the battery cover toward the bottom of the phone.
- Lift and remove the back cover from the phone.

Step 3



- Remove the battery from its compartment.
- Pinch the end of cord where the battery is attached to the phone and pull up gently.

Step 4 — Handset Case



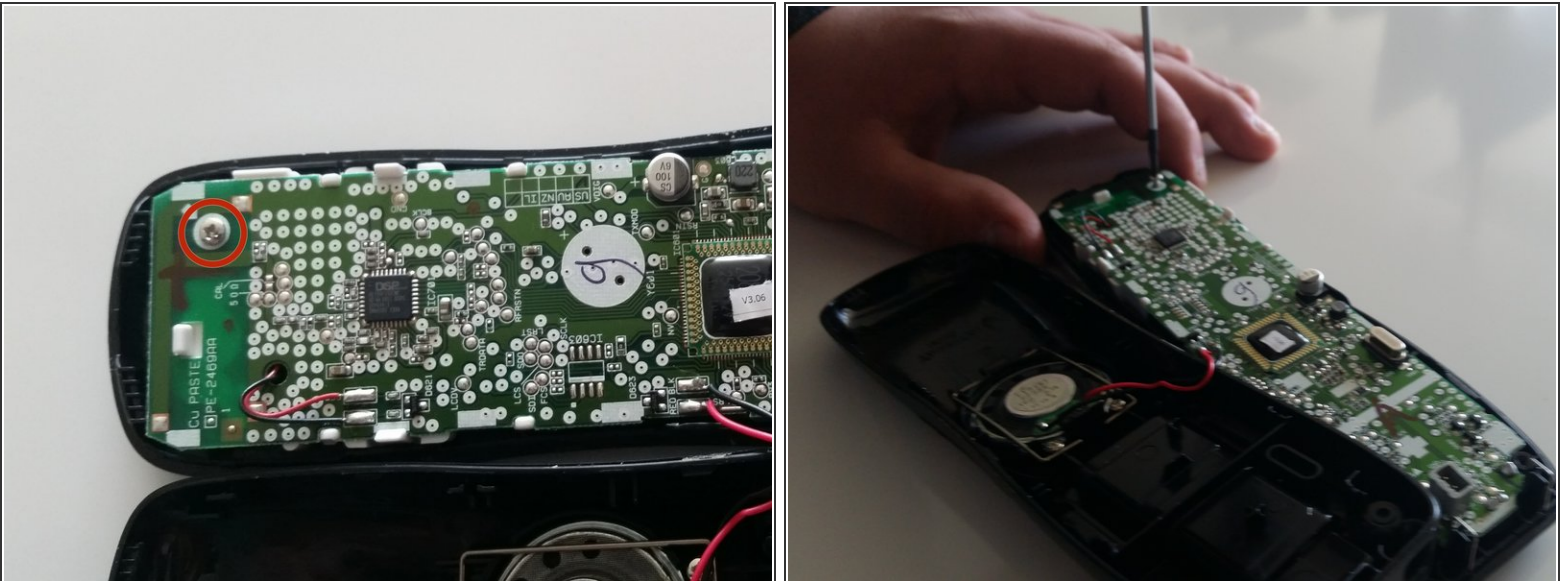
- Remove the two 9mm Phillips #1 screws in the battery compartment.

Step 5



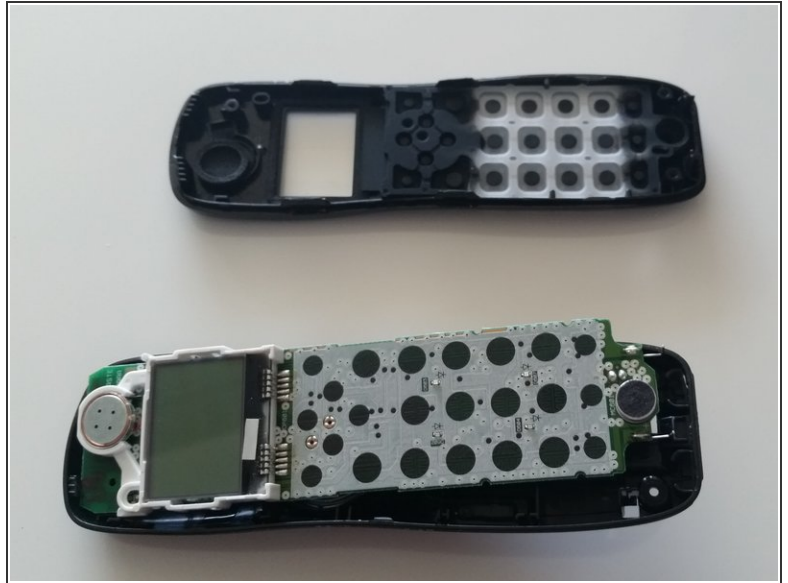
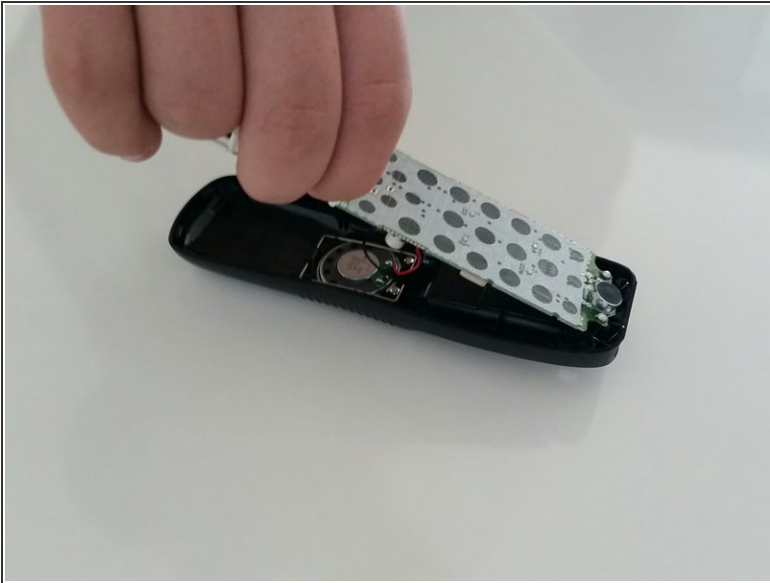
- Use the plastic opening tool to carefully separate the two halves of the case.
 - Slowly work around the entire case to fully separate the halves before pulling them apart.
- ⚠ Wires inside the case hold the two halves together, tearing these wires will lead to a need for additional repair.

Step 6



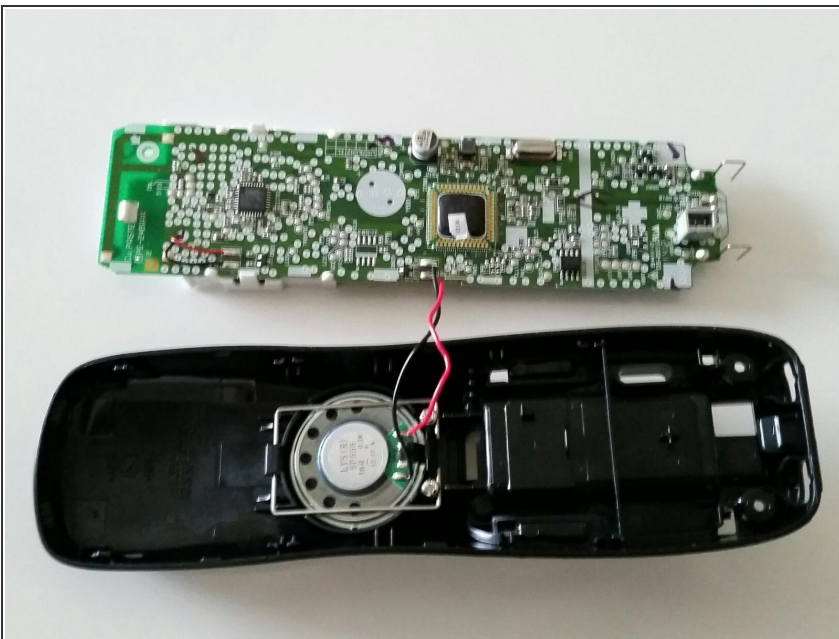
- Carefully remove the 9mm Phillips #1 screw from the top corner of the circuit board.

Step 7



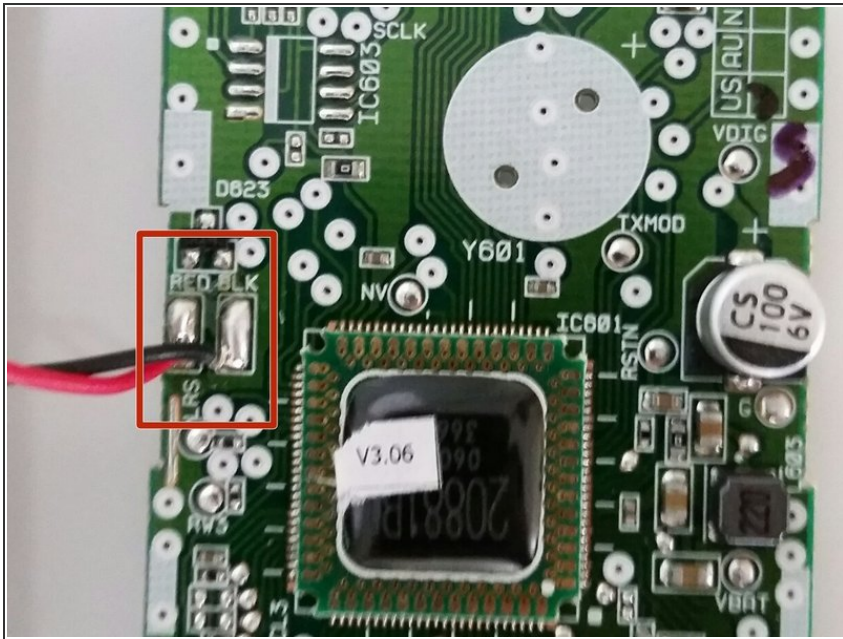
- Carefully grasp either side of the circuit board and lift it straight out of the front half of the case.
- Set the board in the lower half of the case.

Step 8 — Circuit Board/Screen



- Set the circuit board on the table with the screen facing down.

Step 9



- Using the desoldering braid and soldering iron, remove the solder around the cable for the speaker.
- ★ When installing the new board, use the soldering iron and solder to reattach the speaker cables.

To reassemble your device, follow these instructions in reverse order.