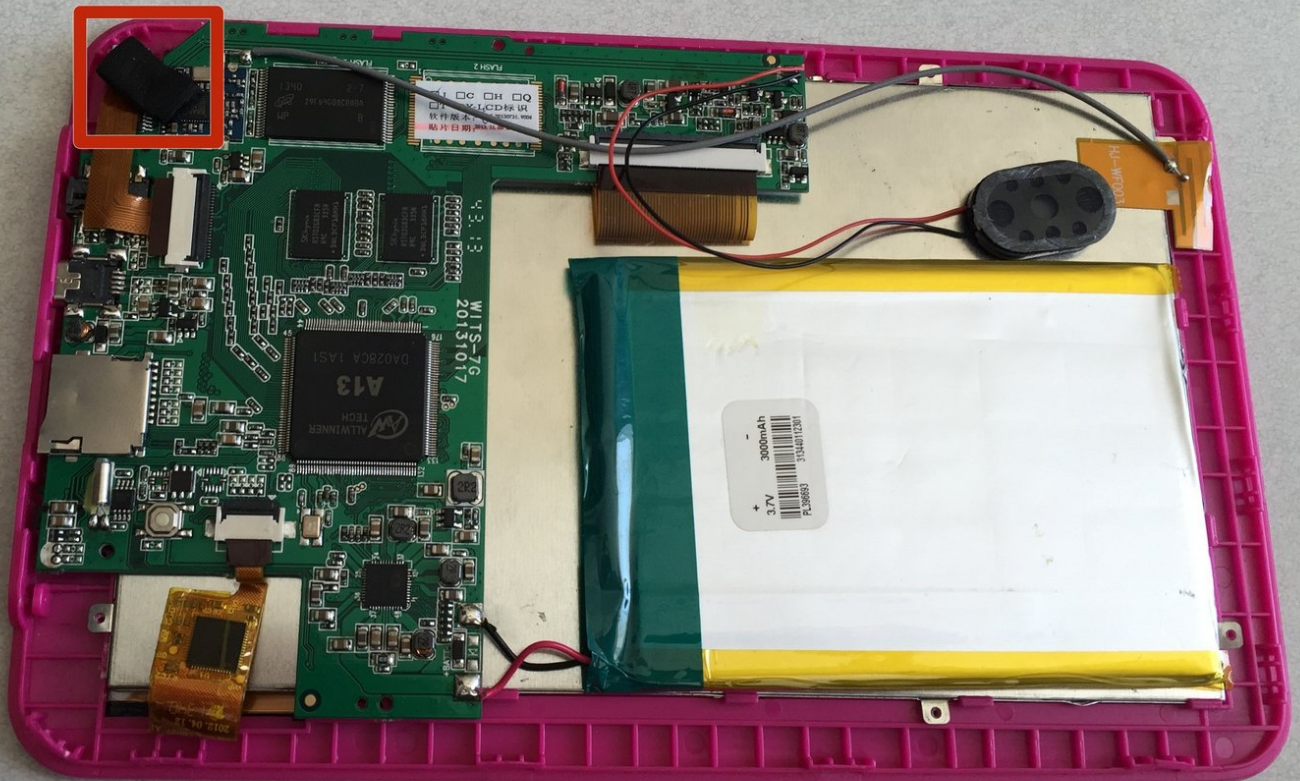




Visual Land Prestige 7L Front Facing Camera Replacement

This guide will show you how to replace the front facing camera.

Written By: Greg Azzalina



INTRODUCTION

If your camera is not working, you may need to replace it completely. Following this guide will allow you to do so.

TOOLS:

- [Phillips #00 Screwdriver](#) (1)
 - [Spudger](#) (1)
-

Step 1 — Back Panel



- Remove the two 8mm Phillips Head screws located at the bottom of your device.

Step 2



- Insert the spudger between the two pieces of the case around the media ports and pry them apart.

⚠ We found the best way to get the spudger inside the case was to insert it into the SD card slot. Be sure to only insert the spudger a shallow amount and be careful not to damage any of the inside of the device.

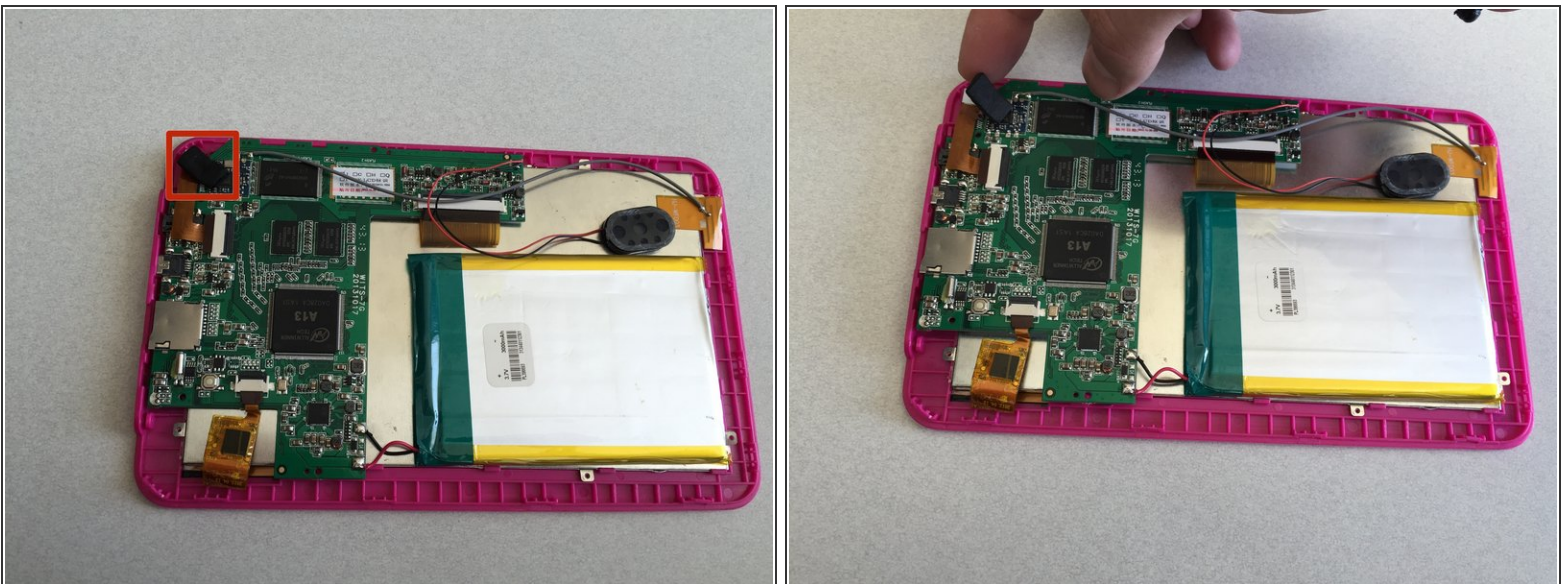
- Finish unsnapping each plastic piece holding the device together along the bottom.

Step 3



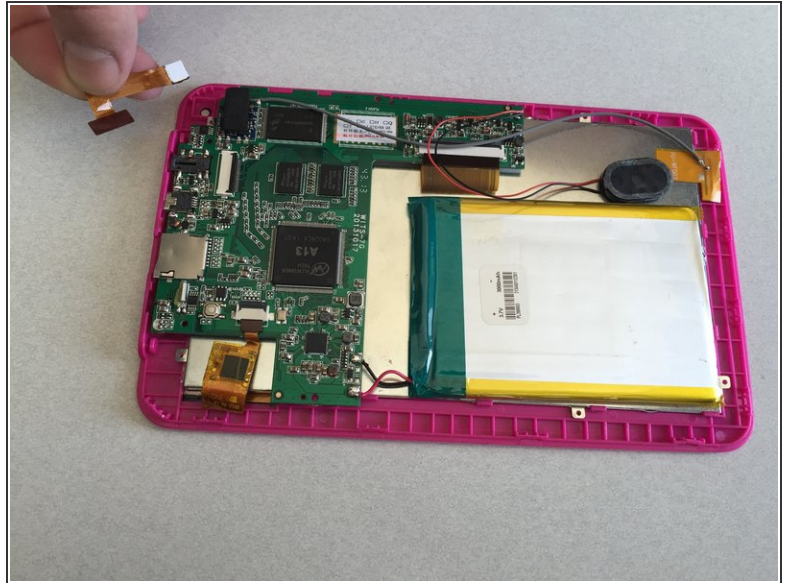
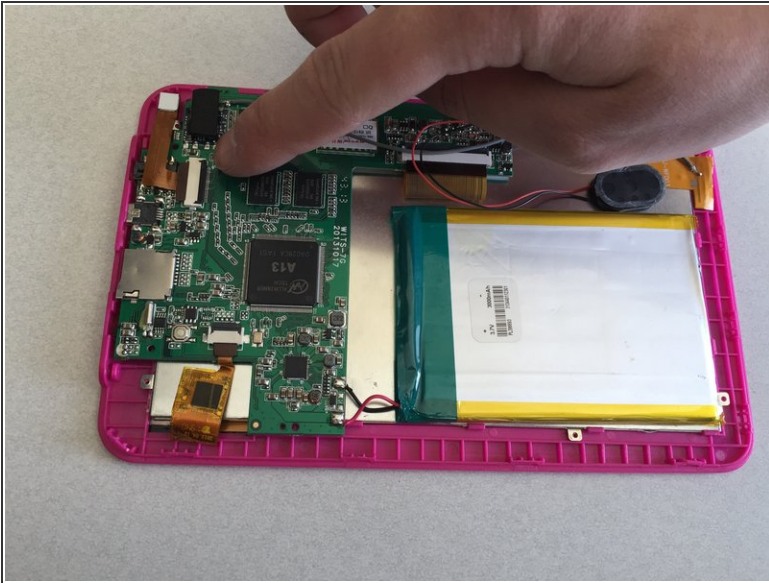
- Move the spudger down the rest of the case, separating each side, and finally the top.
- Pull the back off and place it to the side.
- ⓘ Without a back panel for protection, be sure place your device on the table screen-side down to avoid damaging the internal circuitry.

Step 4 — Front Facing Camera



- Remove the adhesive padding.

Step 5



- Unclip the connector that attaches the camera to the motherboard.
- ⓘ For more information on unclipping connectors see this [How To Guide](#)
- ⚠ Do not pull on the camera until you're sure that it's unclipped, the gold connection will rip.
- Gently pop the camera out of the connector and off the case.

To reassemble your device, follow these instructions in reverse order.