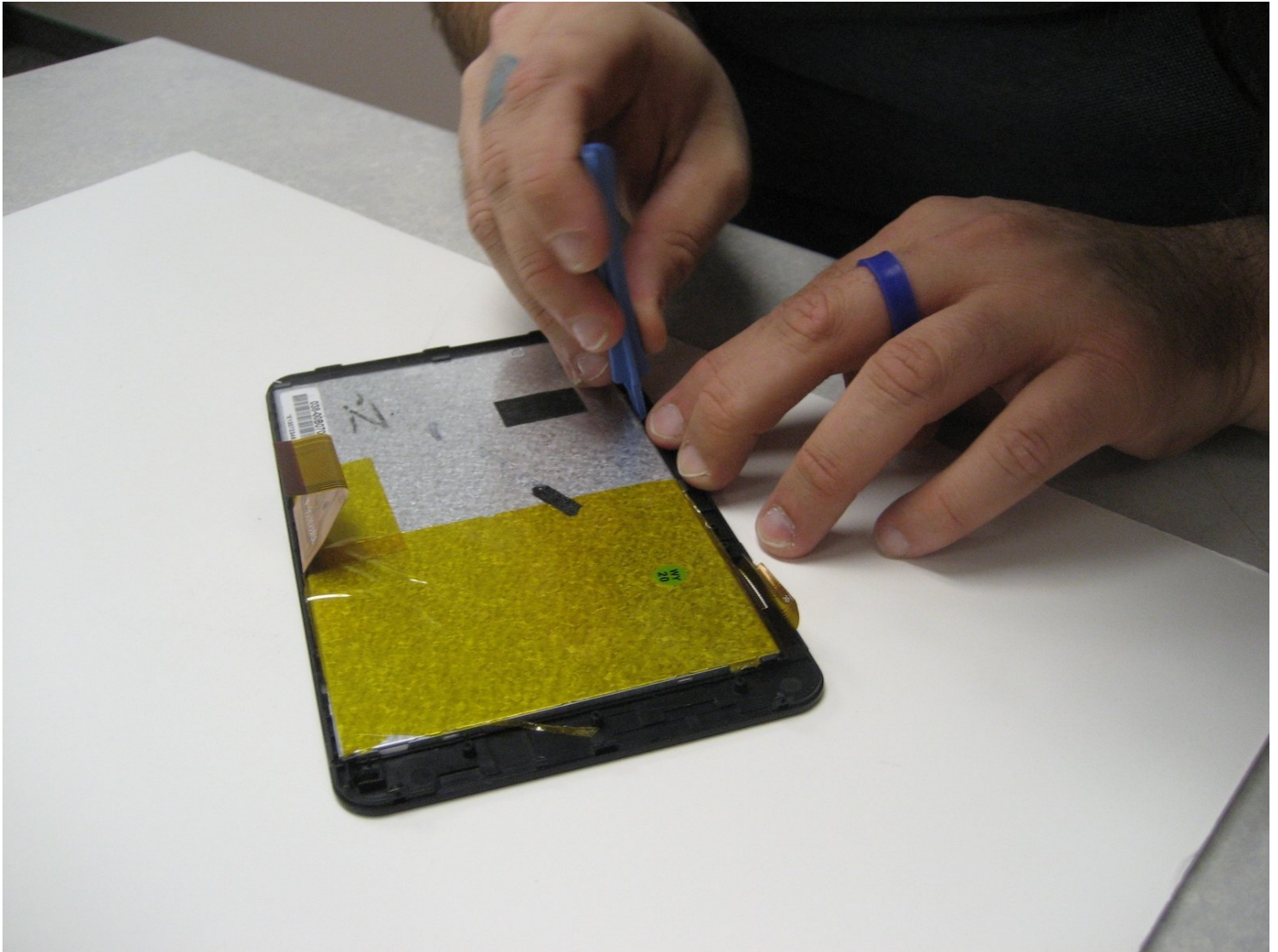




# RCA RCT6077W2 LCD Replacement

Written By: Ryan Williams



---

## **TOOLS:**

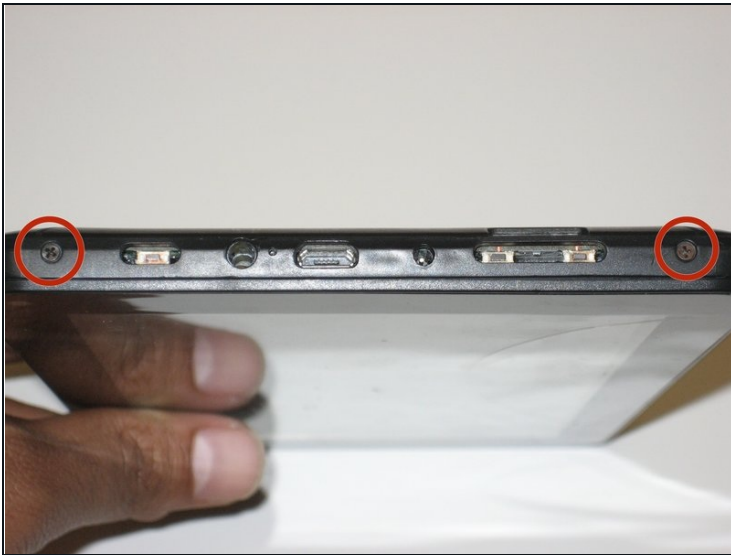
Phillips #00 Screwdriver (1)

iFixit Opening Tool (1)

Plastic Cards (1)

---

### Step 1 — Backplate



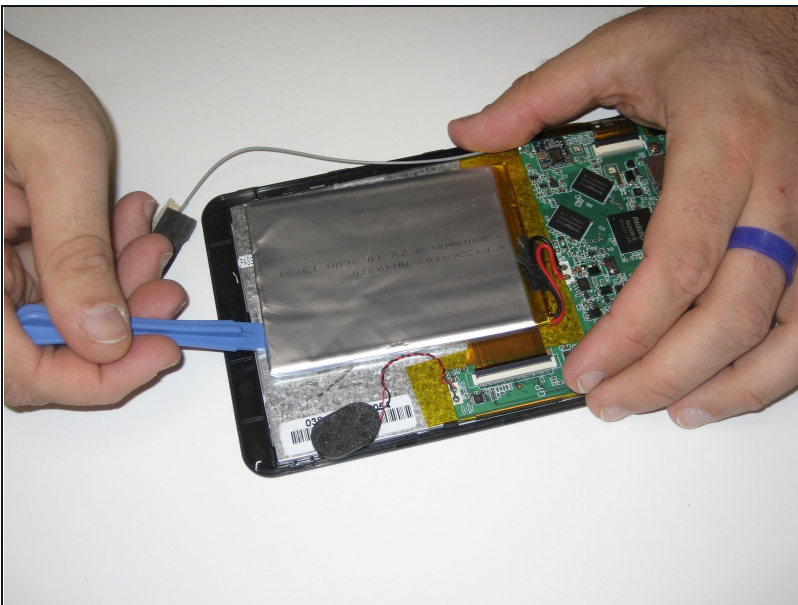
- Remove the two 2.5mm Phillips head screws before attempting to remove the screen from the device.

## Step 2



- Run an opening pick around the edge of the screen to loosen it and begin to pry upward.
- When the screen comes up like it has in the photo, it should be able to simply be removed from its casing.
- ① The buttons on the end of the device will be loose when you remove the screen from the backplate. Be careful not to lose them.

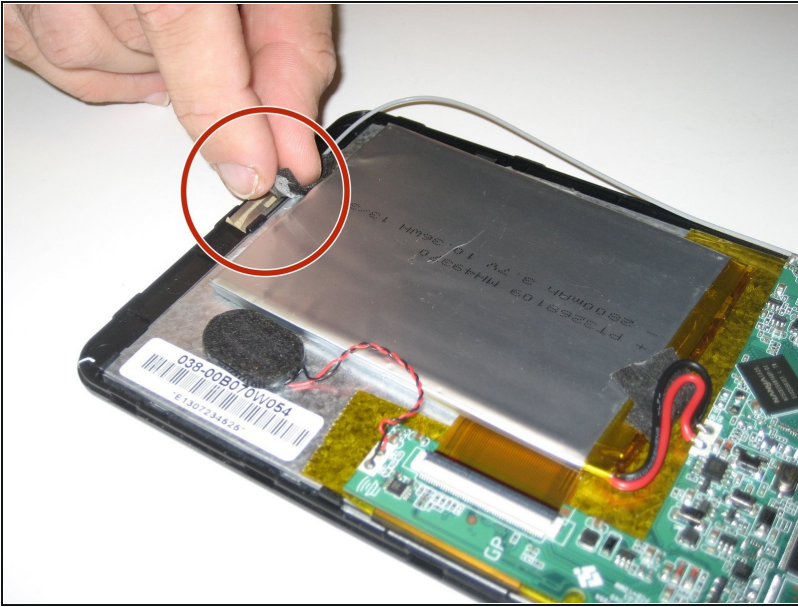
## Step 3 — Battery, Motherboard, Speaker, and Antenna



- Remove the battery by first removing the electrical tape holding it down. Then begin gently prying underneath it and around the edges with your plastic opening tool, until the battery is loose.

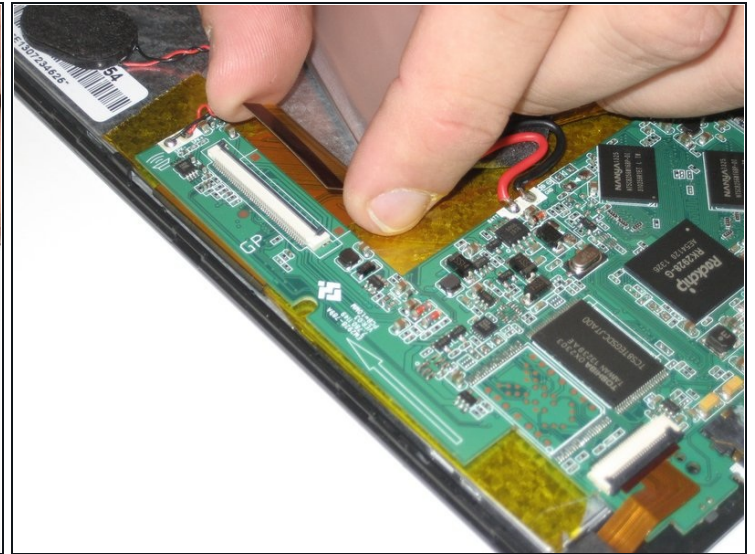
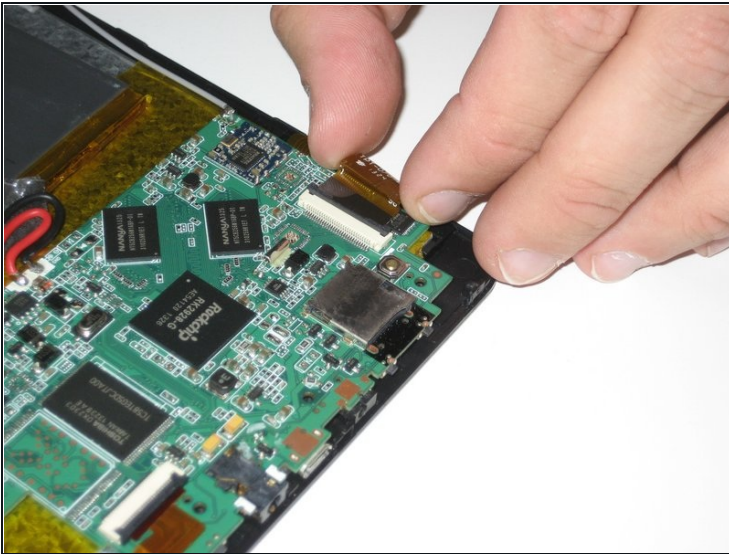


## Step 4



- Remove the antenna by peeling back the tape holding the antenna to the casing.

## Step 5



- Unclip the ribbon cables from the motherboard by lifting up on their latches (the black portions that the cables feed into) and gently pulling the cables.

⚠ Do not use force to try and remove the cables. The latch may not be lifted up all the way, and using force can separate the cable from its connector. This can damage important components of the tablet.

## Step 6



- Remove the three 2.5mm Phillips screws from the motherboard.
- After removing the screws, use a plastic opening tool to gently pull the motherboard off of the double-sided tape holding it down.

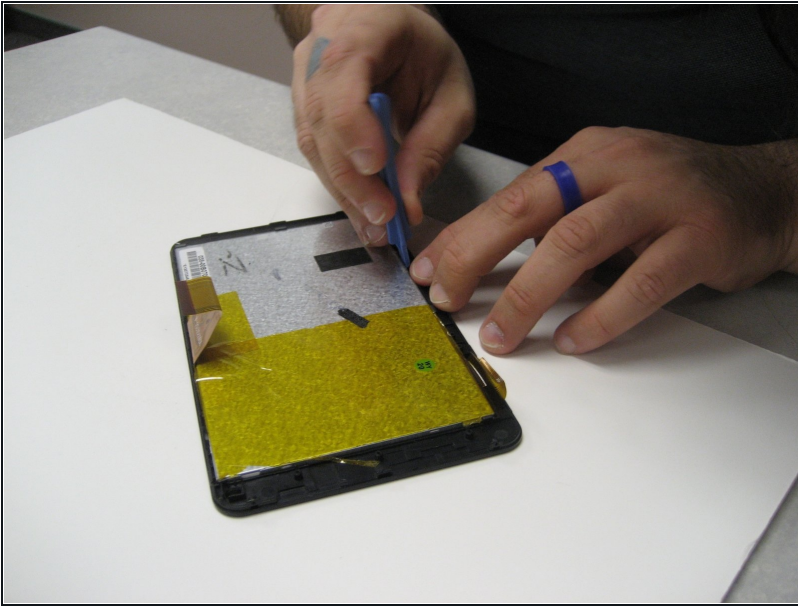
## Step 7



- Replace the removed unit with a suitable replacement, with all of the pictured parts.
- ☑ When reassembling the device, be sure to put the speaker back into its slot in the casing before securing the backplate.



## Step 8 — LCD



- To remove the LCD from the screen casing, gently pry it out of the clips that are holding it in place.
- ① Try and focus on one half of the LCD, as the other half will come out easily when the first half comes loose. Be careful not to damage the clips that hold the LCD in place. Also be careful not to damage the LCD housing by prying underneath it. Use [plastic cards](#) to keep clips from reattaching themselves to the device to help in its removal.

## Step 9



- This is the component once it is removed from the screen casing.

---

To reassemble your device, follow these instructions in reverse order.

