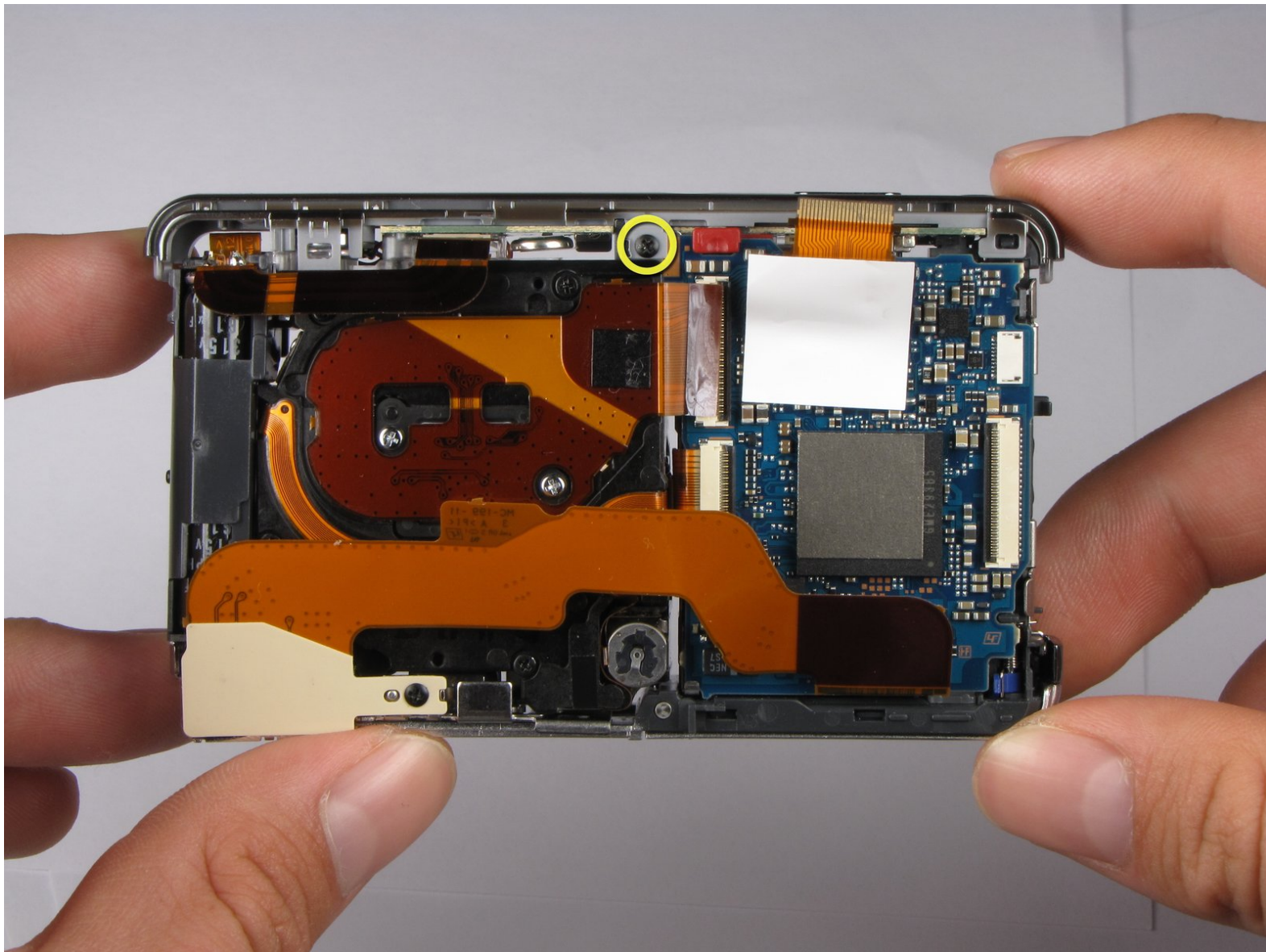




# Sony Cyber-shot DSC-W290 Flash Bulb Assembly Replacement

This guide will show you how to install or replace the Sony Cyber-shot DSC-W290's flash bulb and its casing.

Written By: Evan Mayer



---

## INTRODUCTION

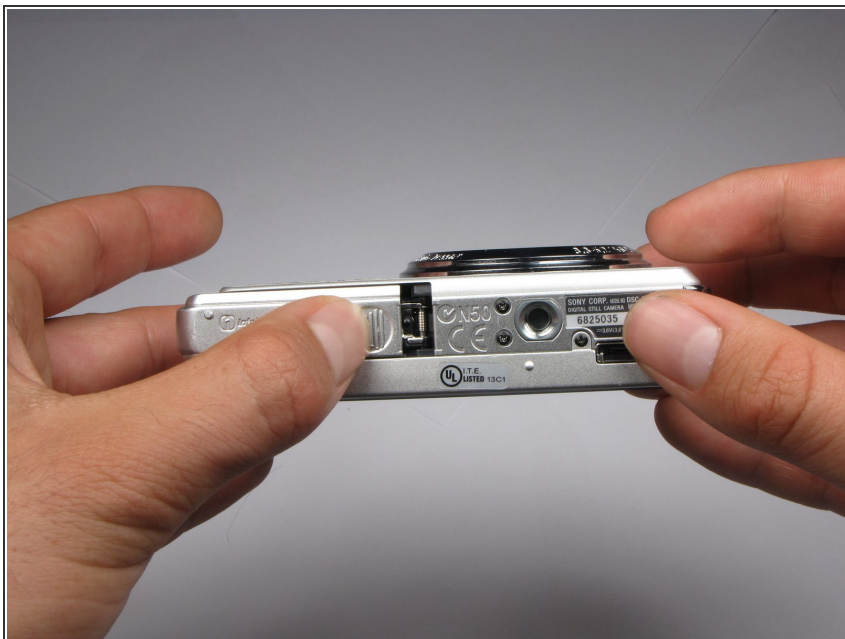
Make sure you have all of the requisite tools on hand before beginning to replace the flash bulb and its casing.

---

### TOOLS:

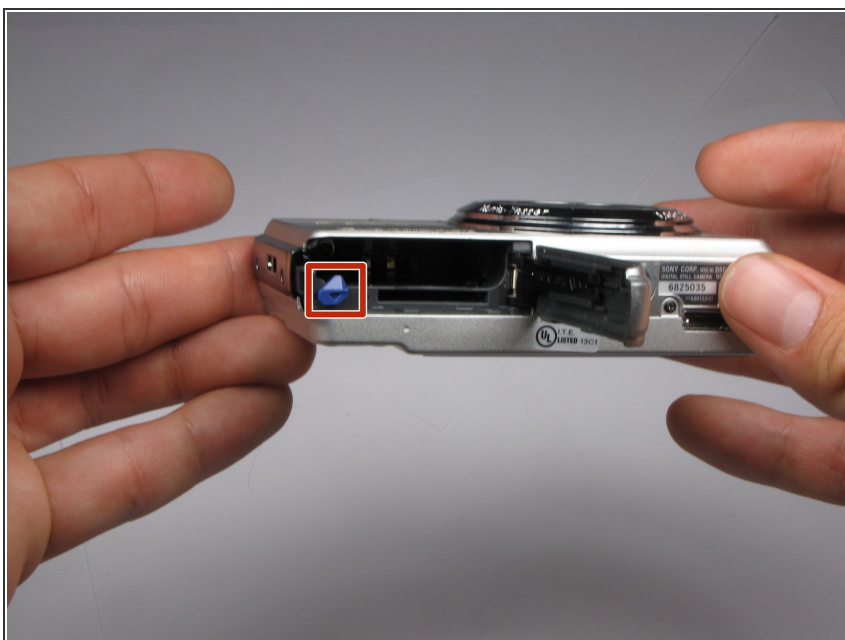
- [Desoldering Braid](#) (1)
  - [Phillips #0 Screwdriver](#) (1)
  - [Soldering Workstation](#) (1)
-

## Step 1 — Battery



- Find the hatch labeled "open" on the left side of the bottom of the camera.
- Slide the hatch in the direction that the arrow is pointing. The hatch will open outward on its own.

## Step 2



- Slide the blue locking tab to release the battery.
- Slide the battery out of the camera.



### Step 3 — Outer Casing



- Replace hatch and rotate camera 180 degrees. You should still be looking at the bottom of the camera.
- Remove the four 2.5mm Phillips #0 screws.

### Step 4



- Turn the camera so the left side-panel reading "5x Optical Zoom" faces you.
- Remove the two 2.5mm Phillips #0 screws.
- ⓘ You may have to remove the screws with a pair of tweezers when the screws are almost out.

## Step 5



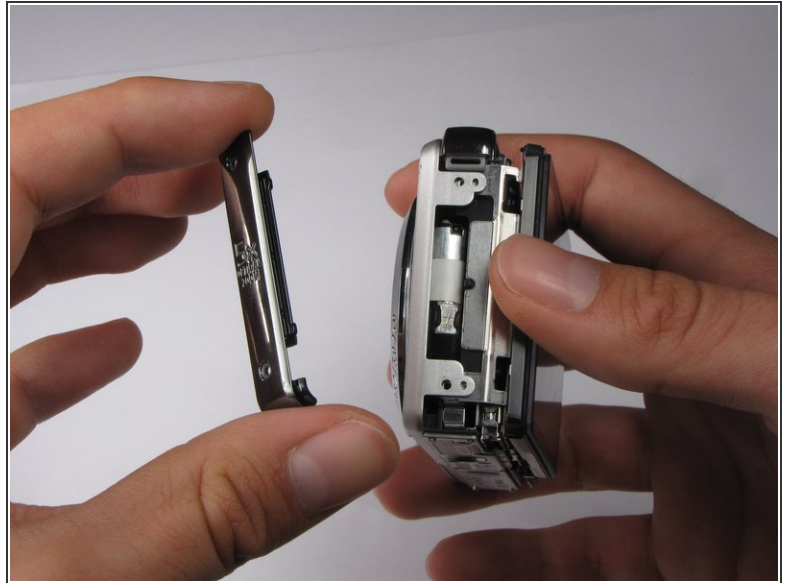
- Turn the camera so the right side faces you.
- Remove the two 2.5mm Phillips #0 screws.
- ⓘ You may have to remove the screws with a pair of tweezers when the screws are almost out.

## Step 6



- Rotate camera so that the back is facing you.
- Pull the back casing directly away from the LCD screen.

## Step 7



- Turn the camera so that the left side is facing you.
- Pull the left side-panel off of the camera.

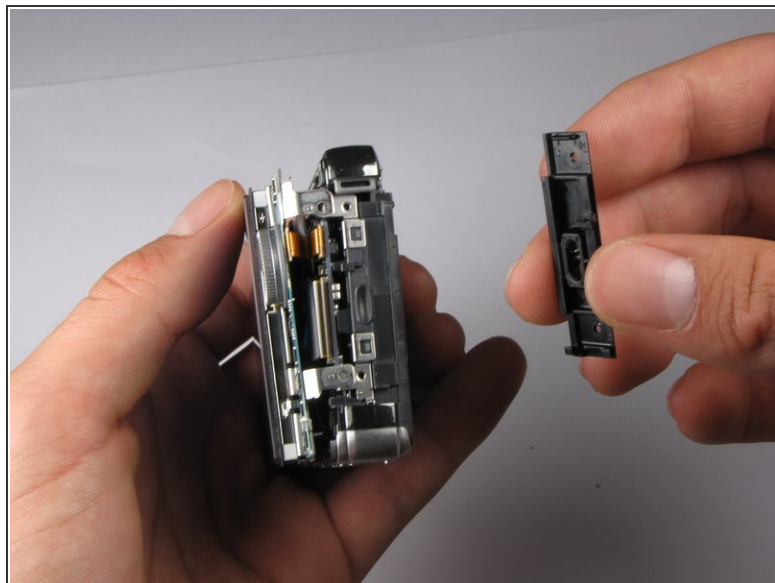


## Step 8



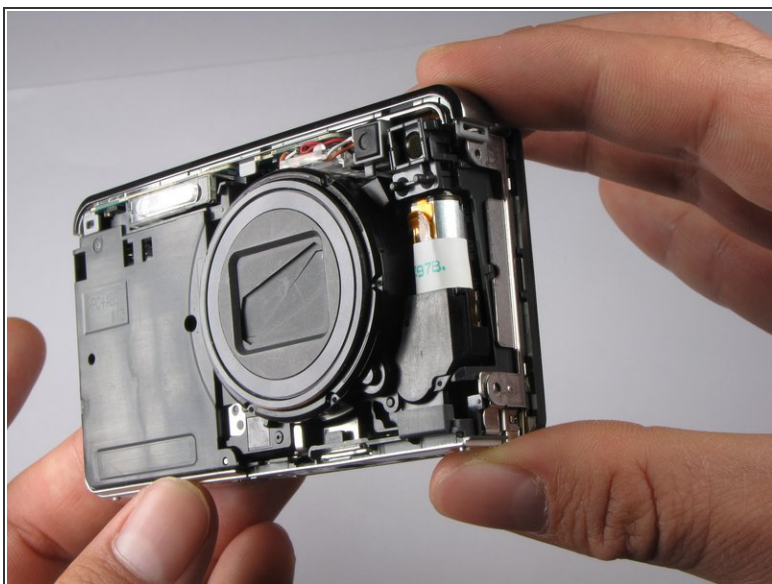
- Turn camera so that the front of the camera is facing you.
  - Pull the front casing directly away from the camera.
- i** The right side panel may fall off when you take the front panel off.

## Step 9



- Turn the camera so that the right side is facing you.
- Pull the right side-panel away from the rest of the camera.

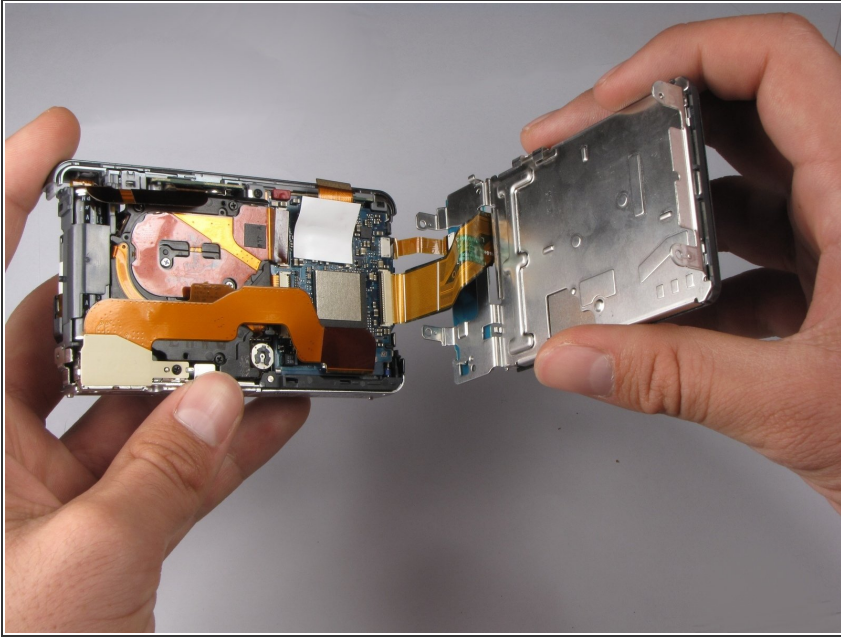
## Step 10



- This is what your camera should look like now that you have removed the casing from all sides.

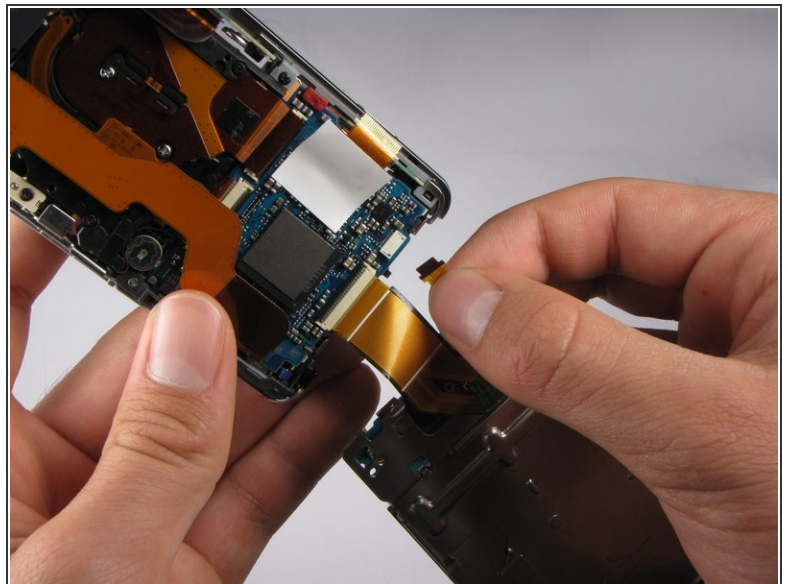
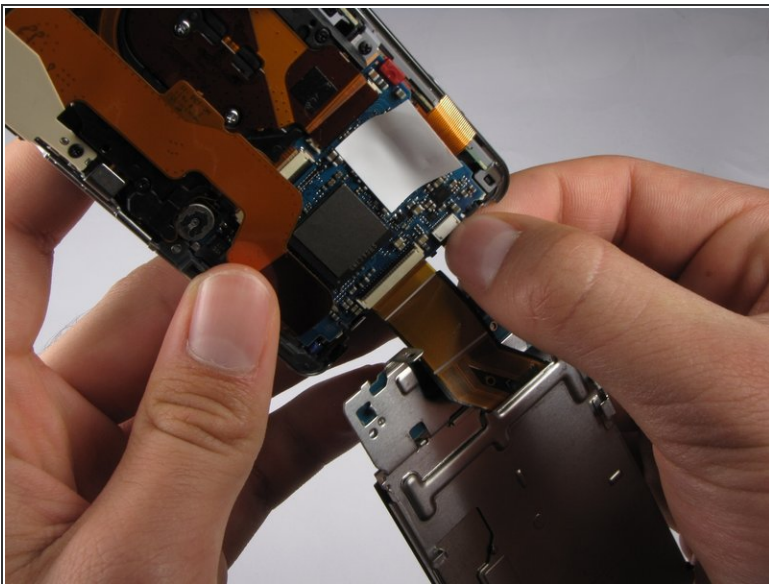


## Step 11 — LCD Assembly



- Gently pull the LCD and its casing away from the motherboard as shown.
- ⓘ Be careful not to rip out any ribbon cables.

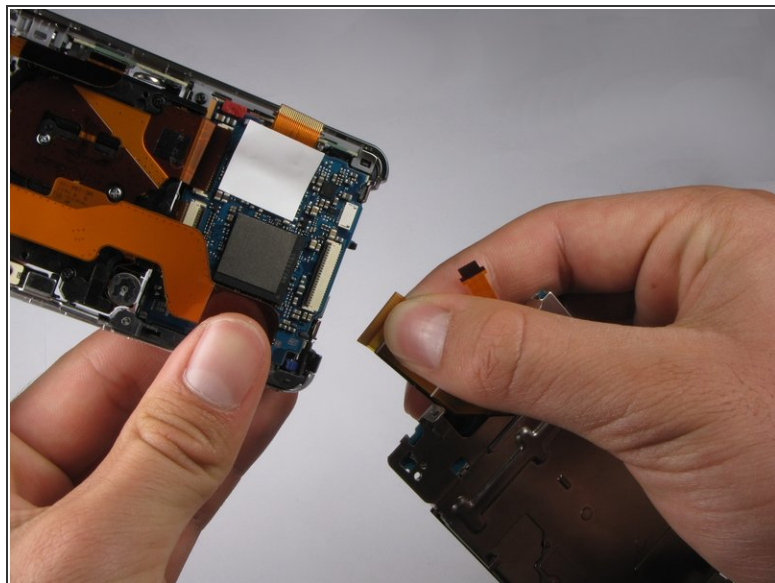
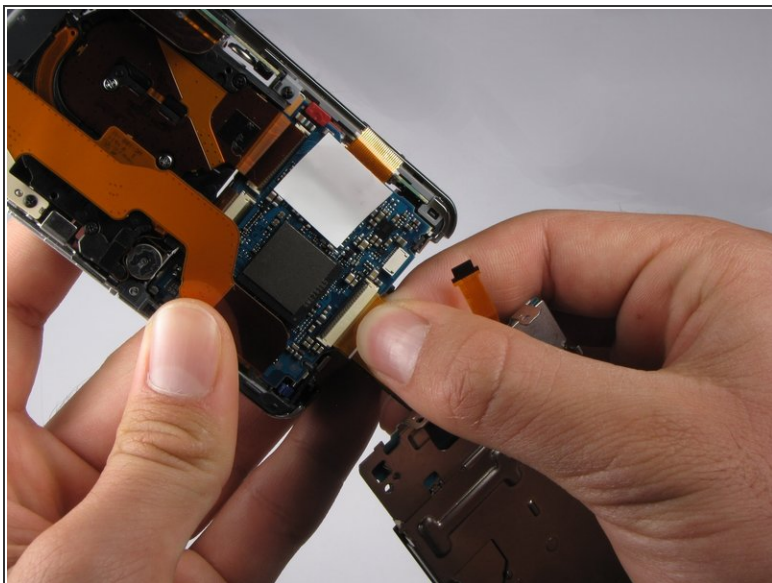
## Step 12



- Disconnect the small ribbon-wire by gently pulling on the small ribbon-wire where it connects with the motherboard.

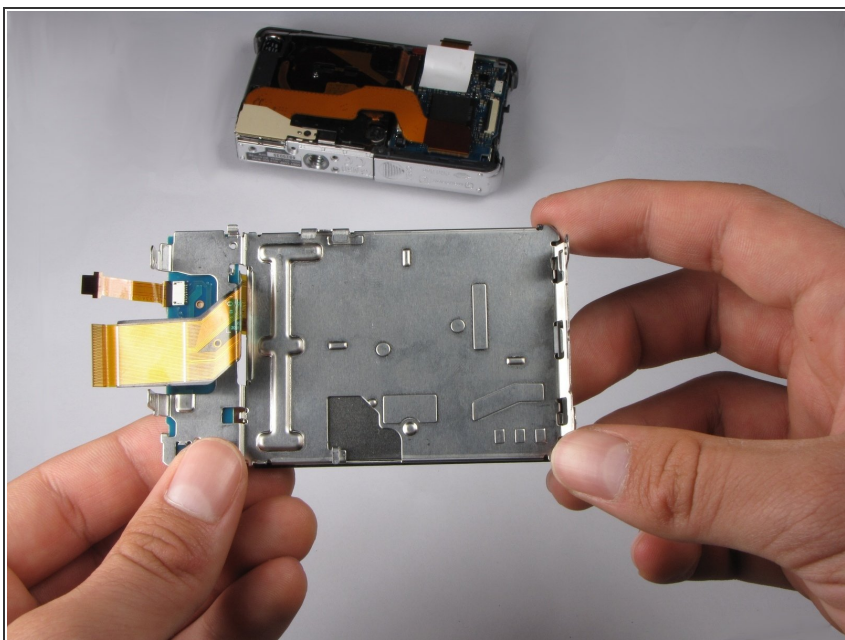
⚠ Do *not* use excessive force to remove the wire because this may cause it to tear.

## Step 13



- Disconnect the large ribbon-wire by pulling on the large ribbon-wire where it connects to the motherboard.

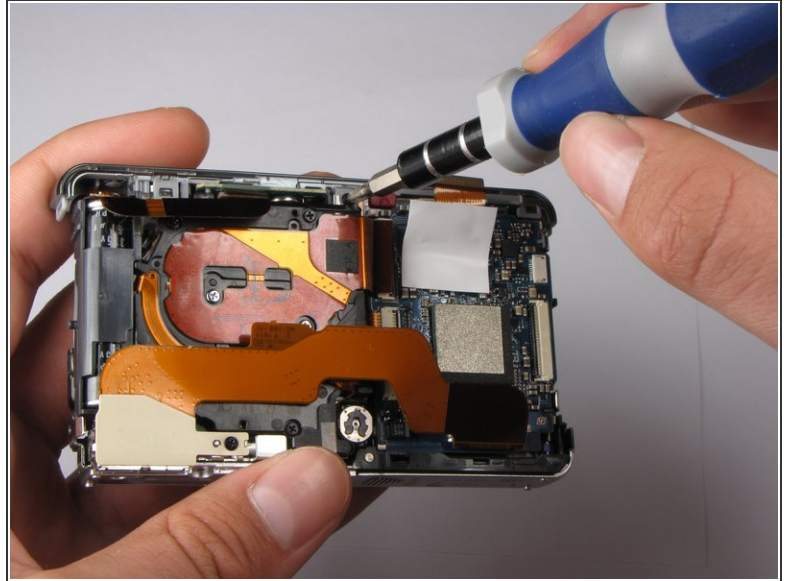
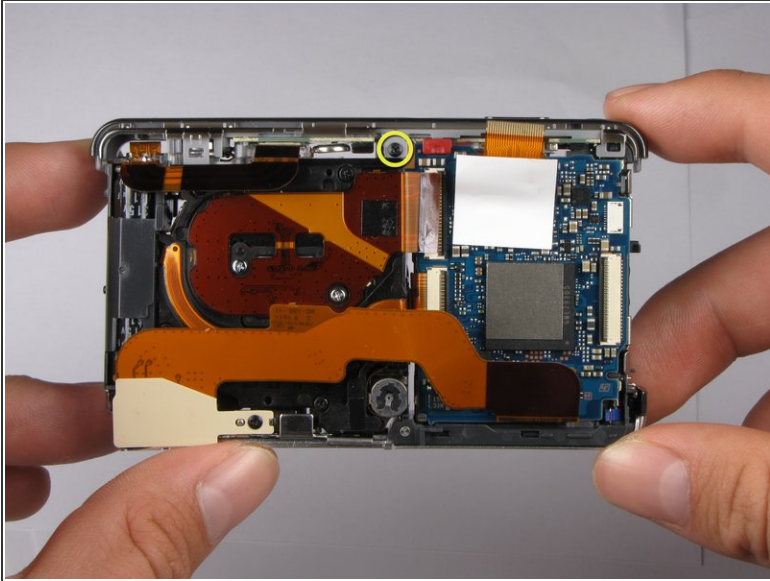
## Step 14



- Pull the LCD and its casing away from the rest of the camera.



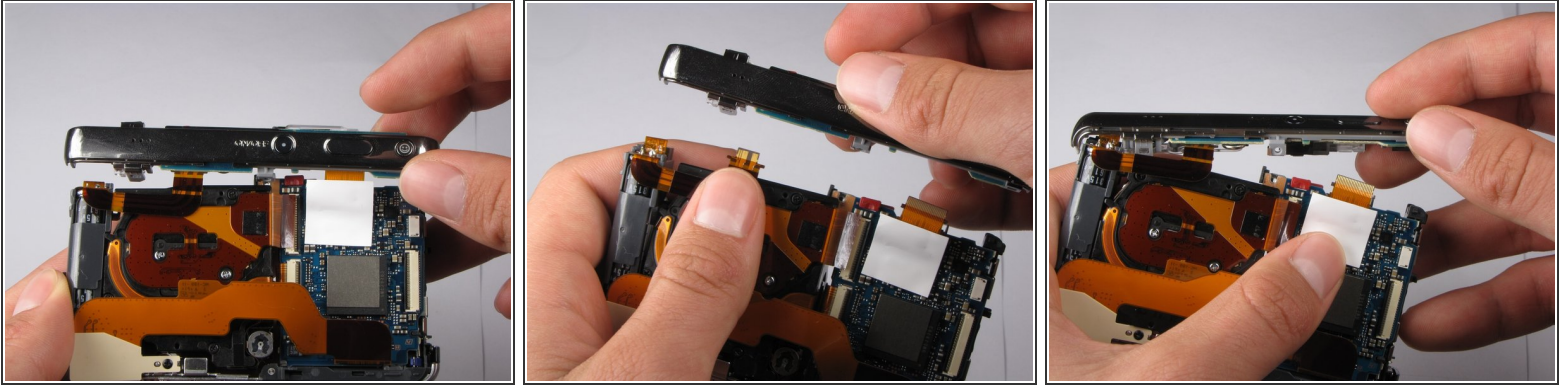
## Step 15 — Flash Bulb Assembly



- Turn the camera so the back is facing you.
- Remove the 2.5mm Philips #0 screw at the top of the camera.



## Step 16



- Tilt top casing up and towards you.
- Carefully remove the right ribbon-wire from the top camera panel by pulling where the wire connects to the top.
- ⓘ Make sure to hold the camera with your thumb on the white square to ensure the ribbon-wire is not disconnected from the motherboard.
- Carefully remove the left ribbon-wire from the top camera panel by pulling where the wire connects to the top.

To reassemble your device, follow these instructions in reverse order.