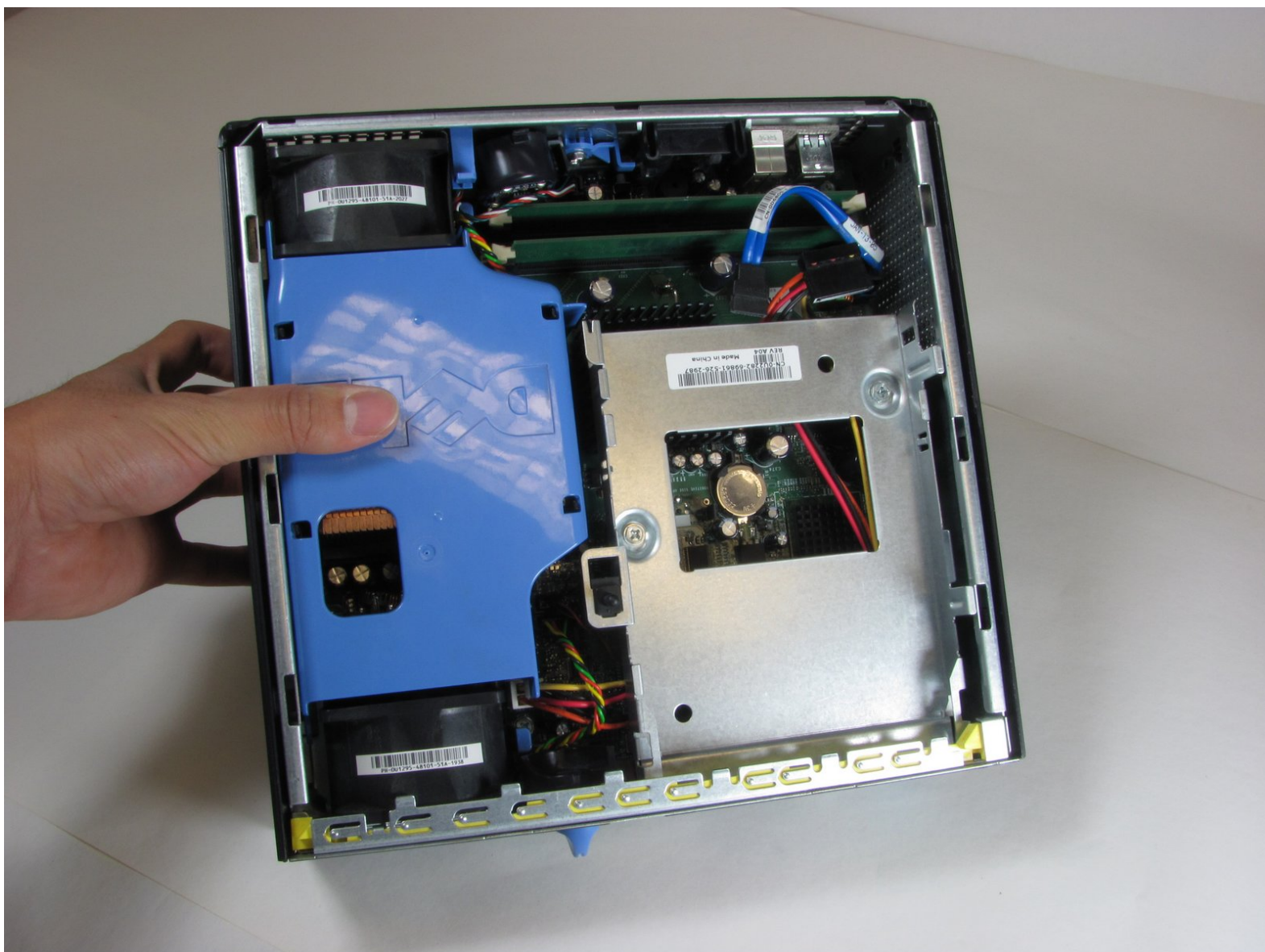




# Dell Optiplex SX280 Battery Replacement

Cell Battery located beneath the hard drive.

Written By: Tom



---

# INTRODUCTION

Replace the Dead Battery on the Motherboard



## TOOLS:

- [Spudger](#) (1)
-

## Step 1 — Panel Cover



⚠ Make sure the computer is turned off, by selecting the start menu and choosing “Shut Down”.

⚠ Ensure all cables, speakers and other devices are unplugged and turned off before opening the computer case.

## Step 2



- Lay the computer on its side; you will see a blue knob.
- Turn this knob 90 deg clockwise.

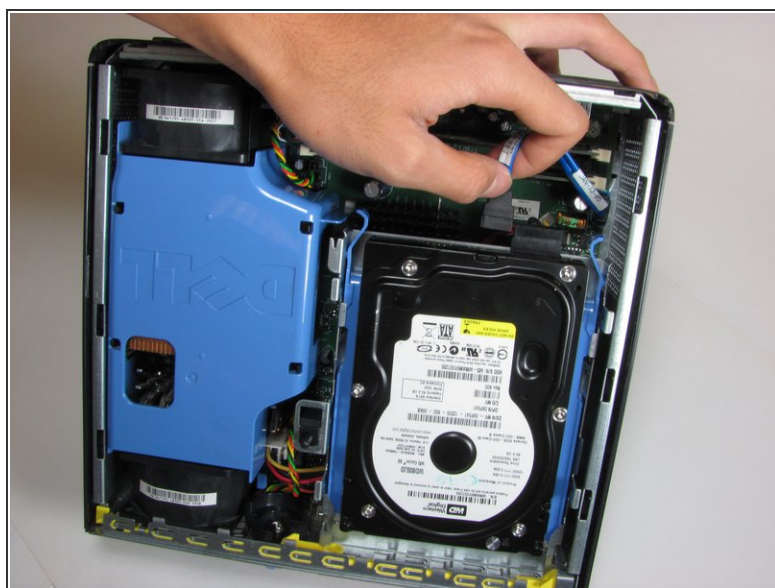


## Step 3



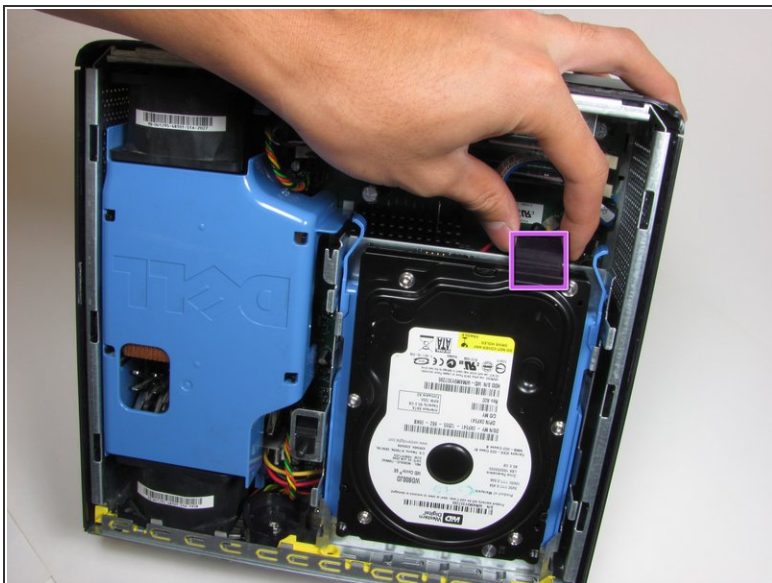
- Slide the panel case forward about 1/2 inch while knob is turned.
- Lift panel case off computer.

## Step 4 — Hard Drive



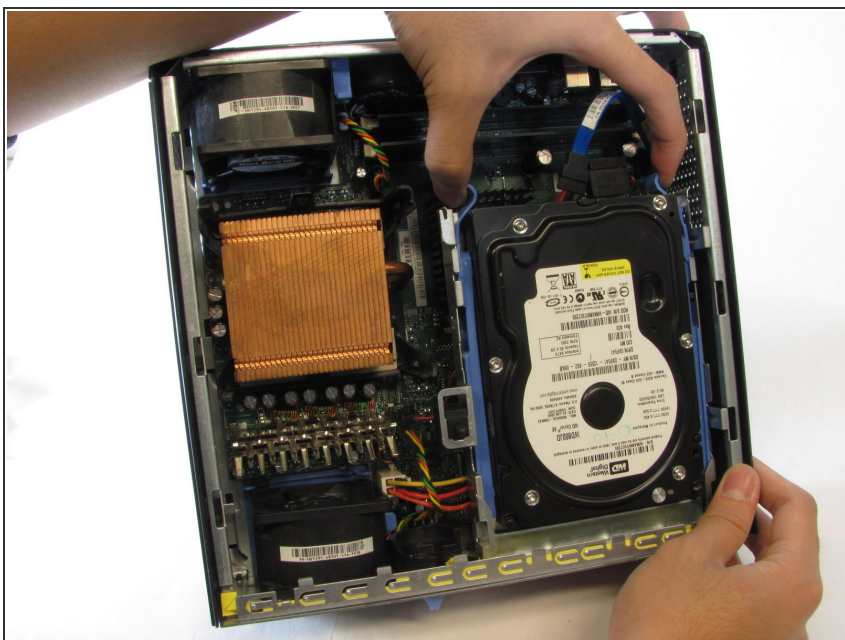
- Unplug the blue cable that connects the hard drive to the motherboard.

## Step 5



- Unplug the power supply, distinguished by its red and yellow wires (yellow wire obscured from view).

## Step 6



- Squeeze the release tabs on either side of the hard drive.

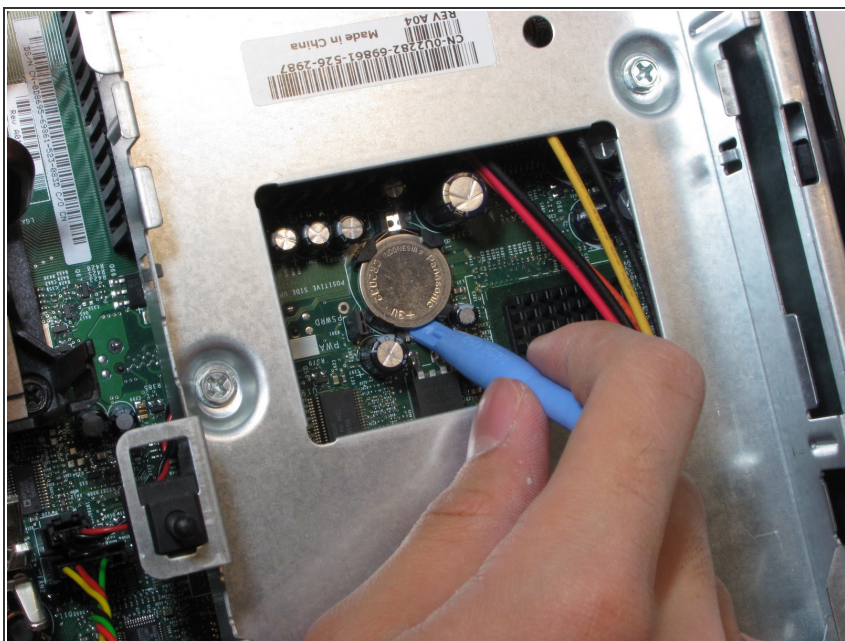


## Step 7



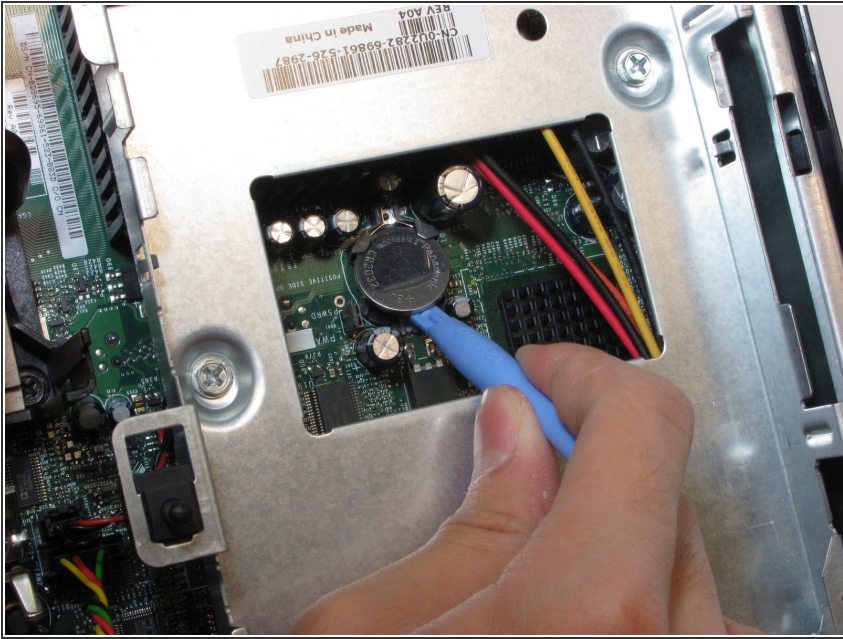
- Slide the Hard Drive out while squeezing the tabs.

## Step 8 — Battery



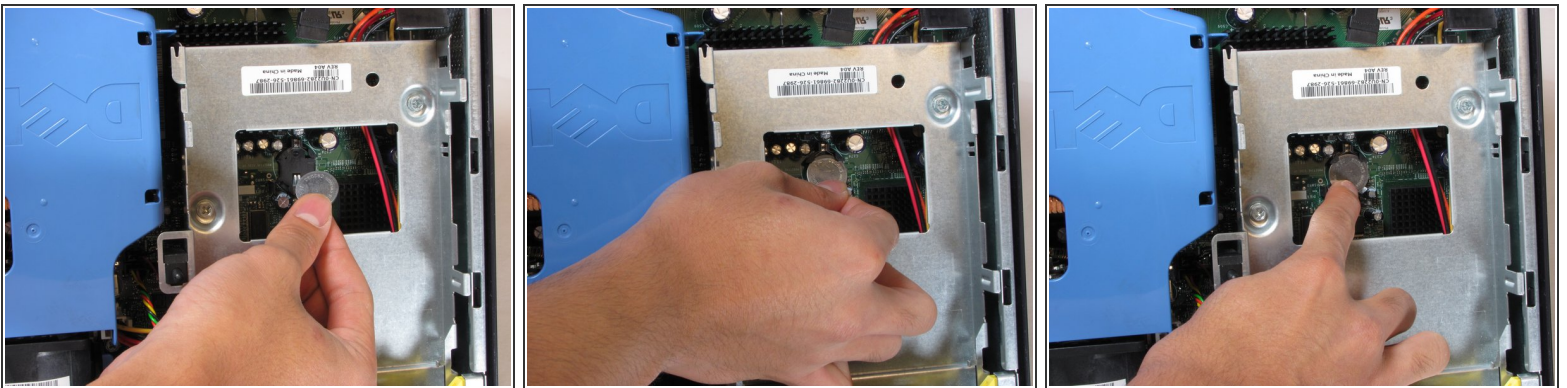
- Under the hard drive, there is a circular, silver battery connected to the motherboard.
- Use a spudger to gently pry the battery from the motherboard.

## Step 9



- Lift the battery out of the motherboard.

## Step 10



- Upon replacement, simply push the battery into the motherboard.

To reassemble your device, follow these instructions in reverse order.