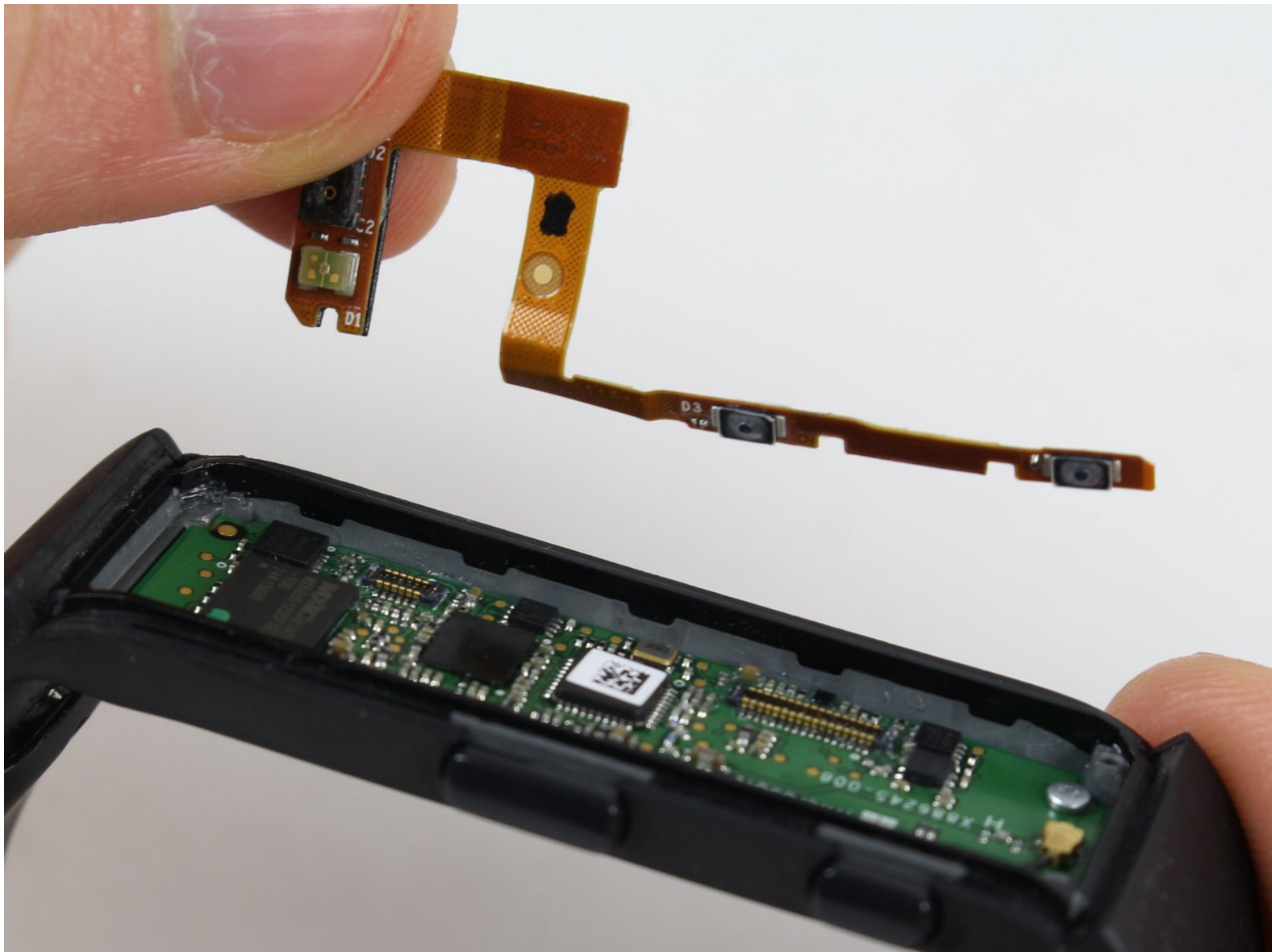




Microsoft Band Sensor Ribbon Replacement

The Microsoft Band's Microphone, UV Sensor, are not working, or the buttons are unresponsive.

Written By: Chad Steese



INTRODUCTION

The sensor ribbon connects the microphone, UV sensor, and buttons to the device

Warning: The following guide is likely to ruin the water resistance of the device.



PARTS:

- [Spudger](#) (1)
-

Step 1 — Screen Frame



- ⚠ To avoid burning your hands, make sure to hold only the thin edges of the iOpener.
- Heat the iOpener. Instructions on how to do this can be found here: [iOpener Instructions](#)
- Firmly press the frame of the band against the iOpener, and hold it in place for about 90 seconds.
- ⓘ When using the iOpener, make sure to wrap it partially around the sides.



Step 2



- Using a spudger, lightly press upwards against one corner of the frame, then the other along the corner of the short edge.
- Alternating between the same two corners, continue pressing until there's about a 1-2 mm gap between that end of the frame and the body.

Step 3



-  Do not pull the frame away too quickly. The screen may be stuck to the frame, and pulling on it could cause damage. If the screen is still attached, lightly push on the screen with a finger and it should pop out.
- Insert the spudger into the gap under the frame, and lightly slide it about 3/4 of the way down one of the long edges, then repeat with the other.
 - If the frame doesn't simply pop off, try sliding the spudger the rest of the way down the long edges, and lightly lift the frame with your fingers.
-  When re-assembling, make sure the frame's microphone hole is on the same side as the sensor board underneath.

Step 4 — LCD Screen



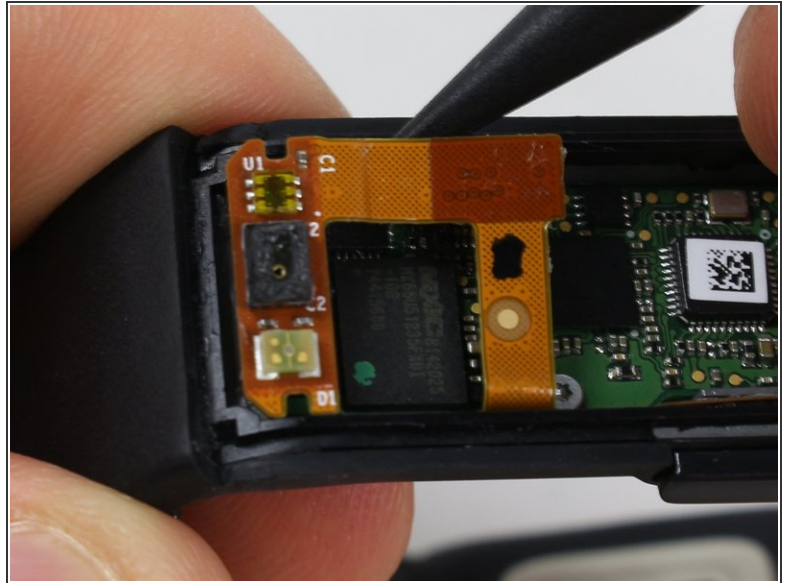
- ⚠ Do not rip the yellow ribbon cable from the motherboard.
- Gently lift the LCD screen from the components using your fingertips.


Step 5



- Lightly pry up the black connector from the motherboard using a spudger.
- Pull the entire LCD screen gently upward to detach the yellow ribbon cable.

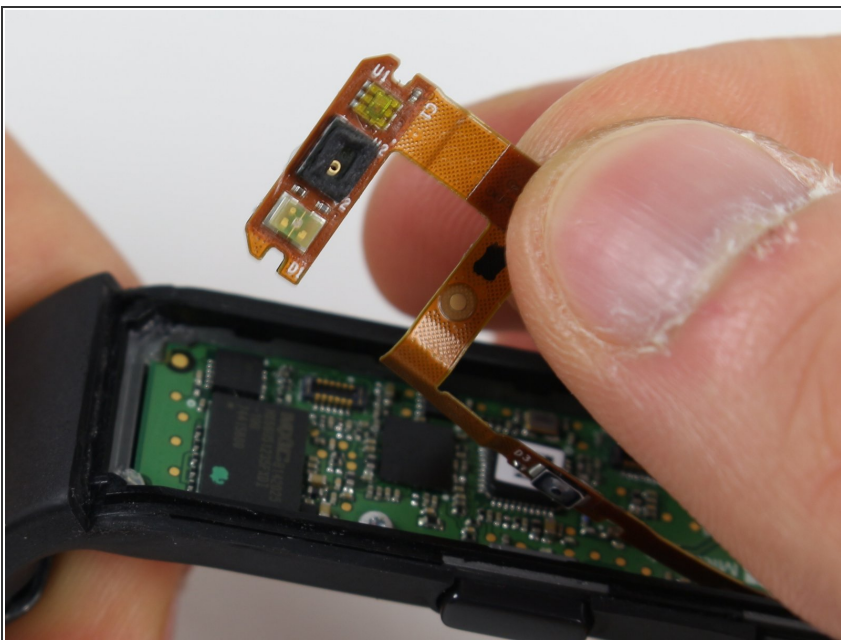
Step 6 — Sensor Ribbon



 Handle the ribbon with care to prevent damage. Do not bend the ribbon unless specified.

- Using the spudger or the plastic opening tool, gently unhook the golden ribbon from the corner on the opposite side of the buttons. The part of the ribbon with the three boxes should then easily be detached from the band.

Step 7



- Using your fingers or tweezers, gently pull the band from away from the motherboard to detach the strip from the buttons.

To reassemble your device, follow these instructions in reverse order.