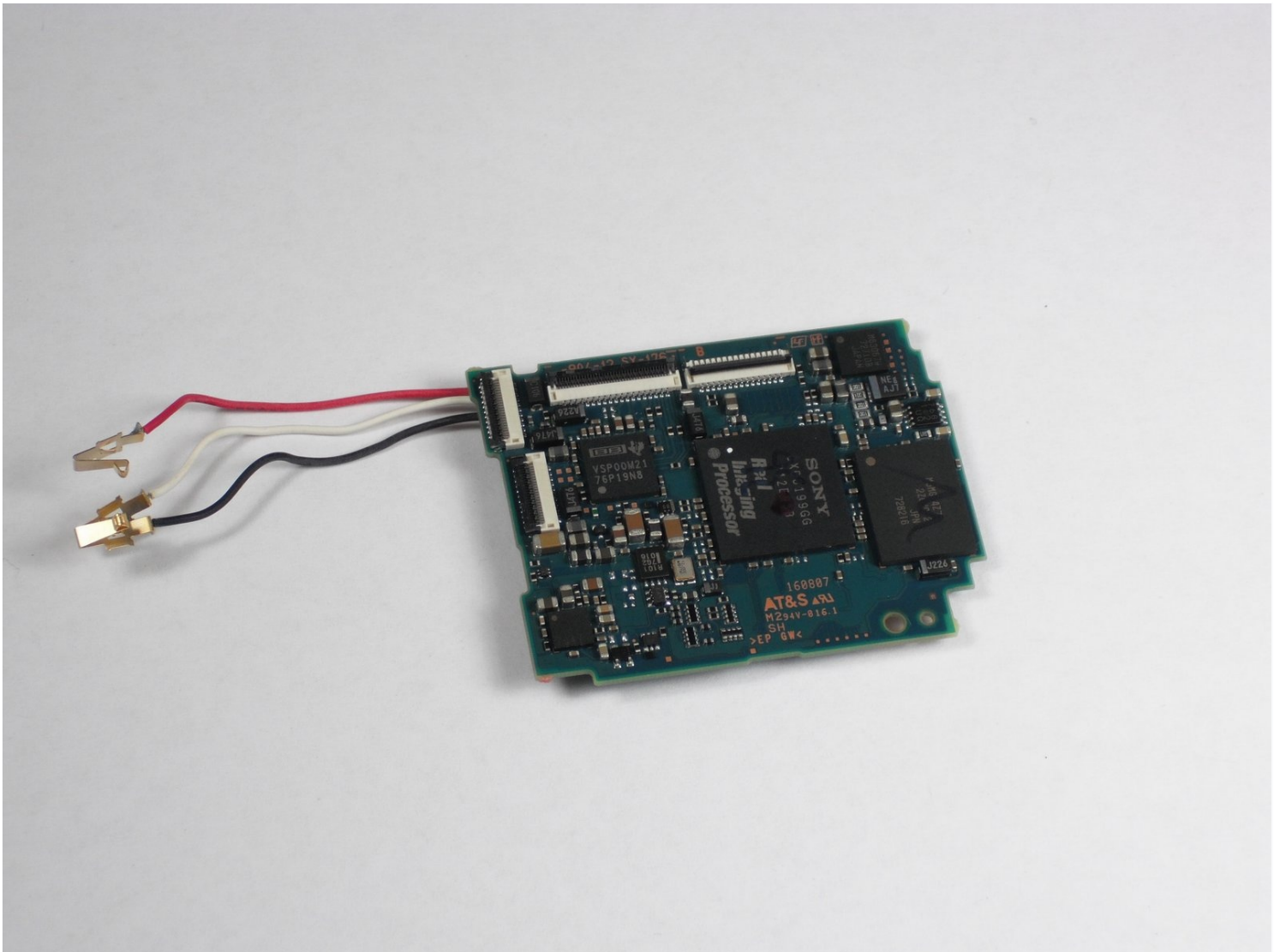




Sony Cyber-shot DSC-W55 Motherboard - Second Half Replacement

We will provide instructions to follow to...

Written By: Andrew Carter



INTRODUCTION

We will provide instructions to follow to remove and thus replace the motherboard.

TOOLS:

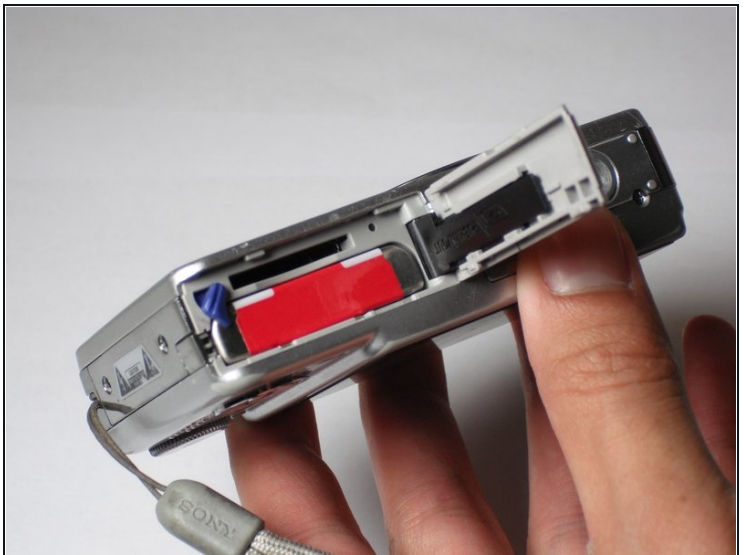
Phillips #00 Screwdriver (1)

iFixit Opening Tool (1)

Spudger (1)

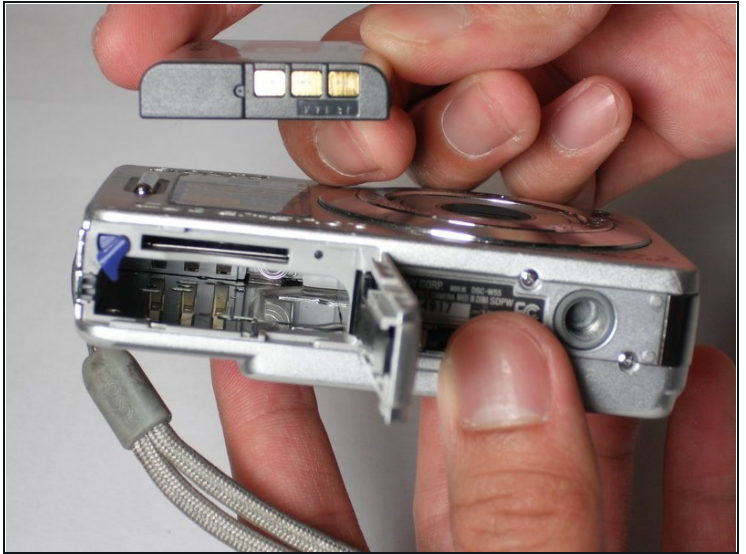
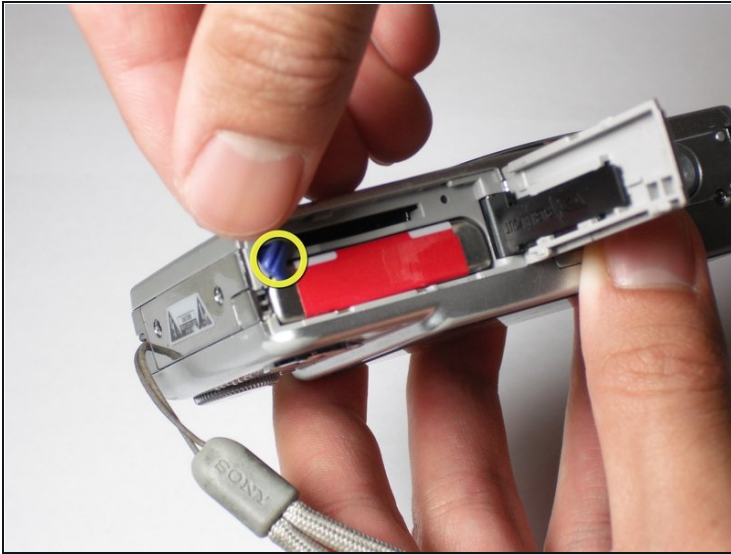
Tweezers (1)

Step 1 — Battery



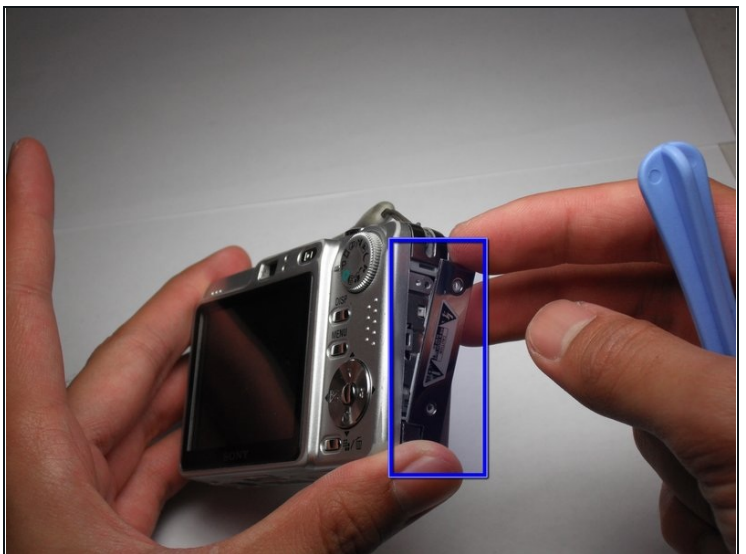
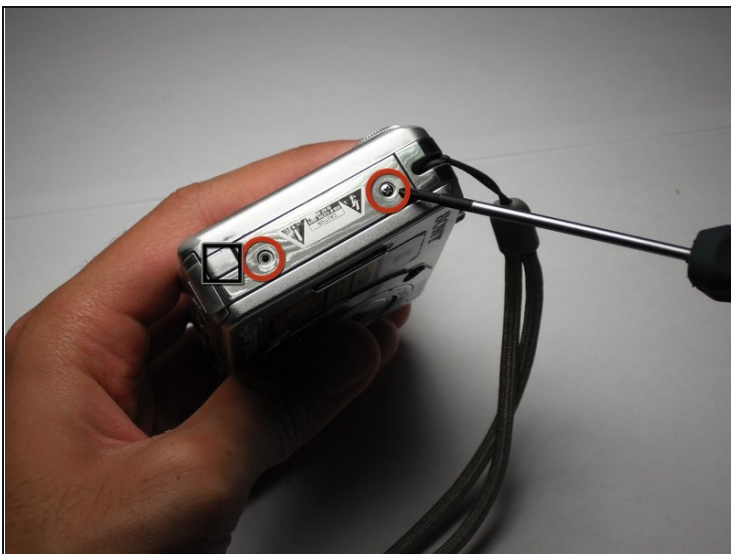
- Slide the battery cover in the direction the arrow points.
- Pull the battery cover towards you.

Step 2



- Flick the blue switch for the battery to pop out.
- Remove the battery from the camera.

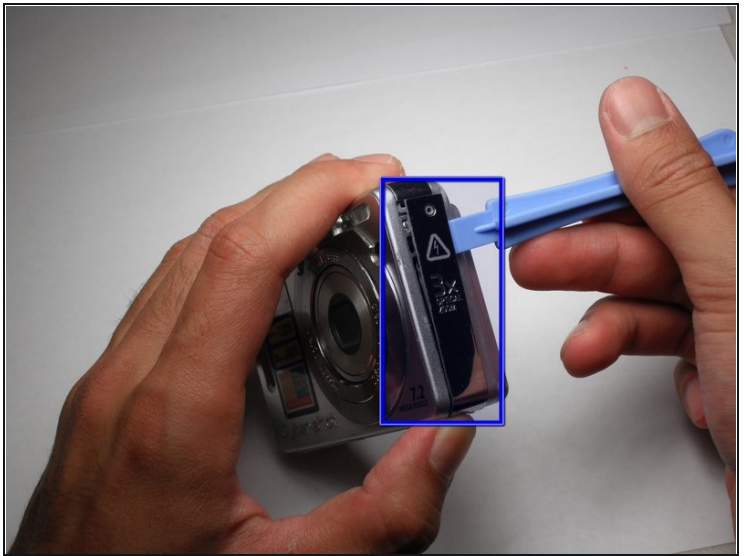
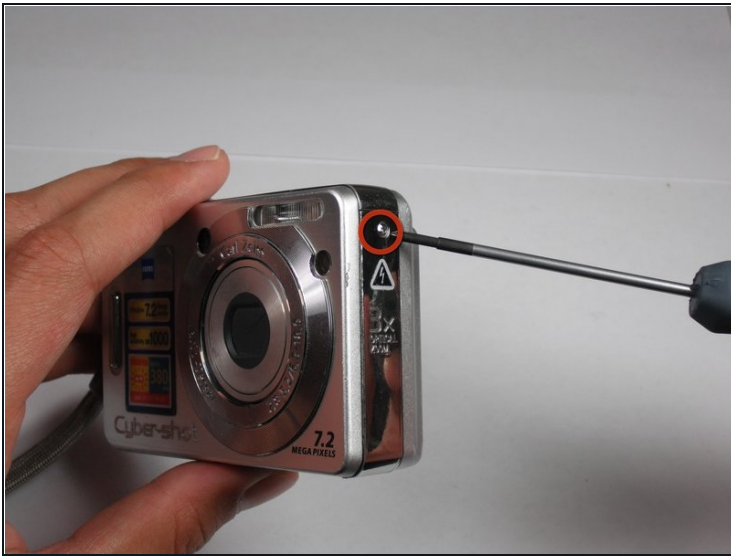
Step 3 — Back Case



- Using the Phillips #00 Screwdriver, remove the two screws from the caution panel.
- Remove that panel.

⚠ Careful for falling pieces.

Step 4



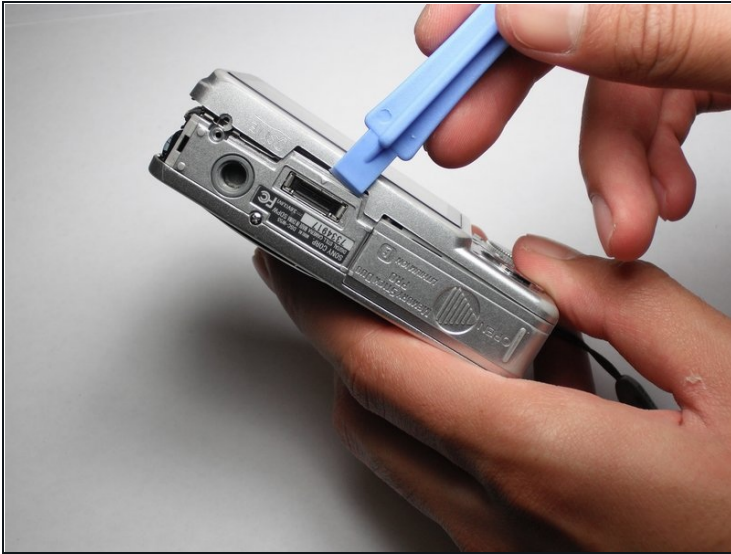
- Remove the screw with a Phillips #00 screwdriver from the left side of the camera (with '3x optical zoom' engraved on the side panel).
- Remove that panel.

Step 5



- Remove the screw using the Phillips #00 screwdriver from the bottom of the camera, closest to the back cover.

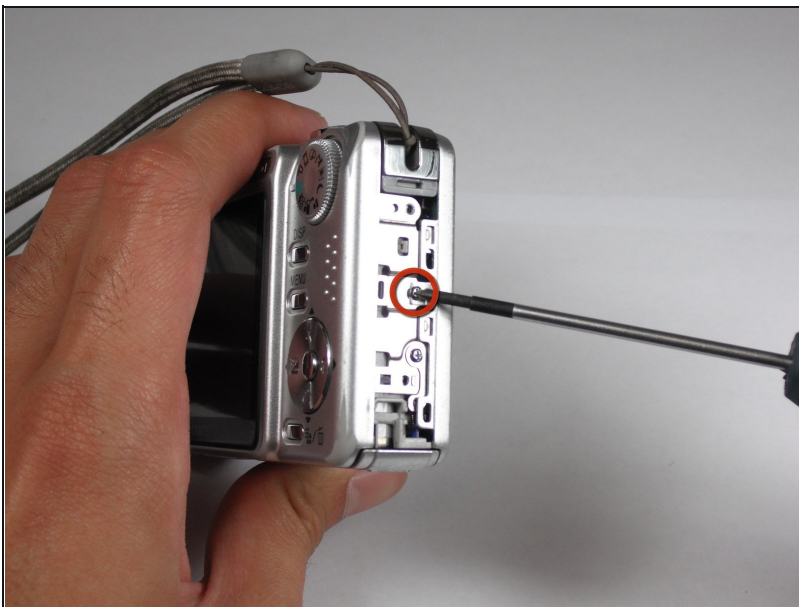
Step 6



- Gently remove the back cover.

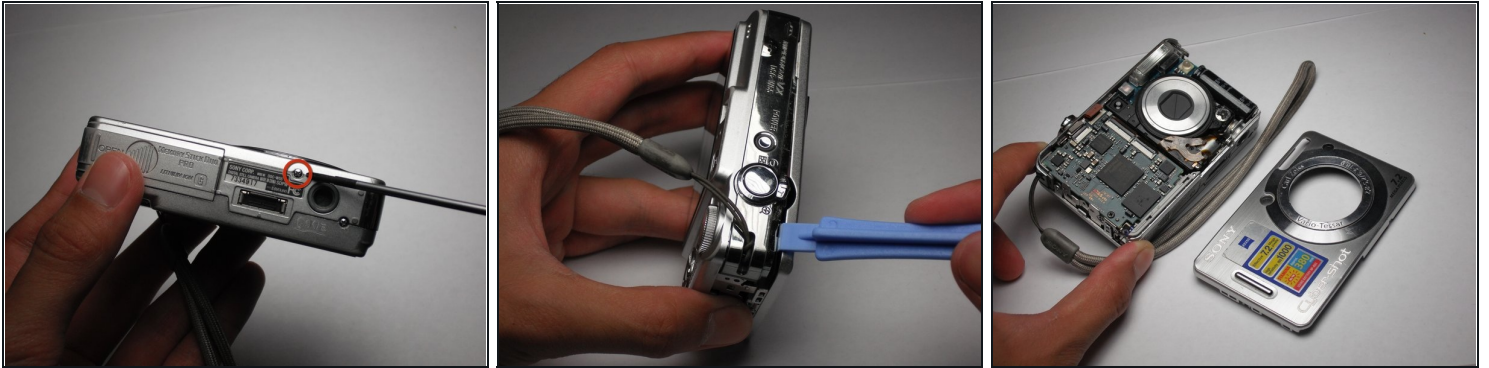
⚠ It may be a bit stiff, so use some force to remove it. Proceed with caution.

Step 7 — Front Case



- Remove the screw using a Phillips #00 screwdriver on the right side (where the caution panel used to be).

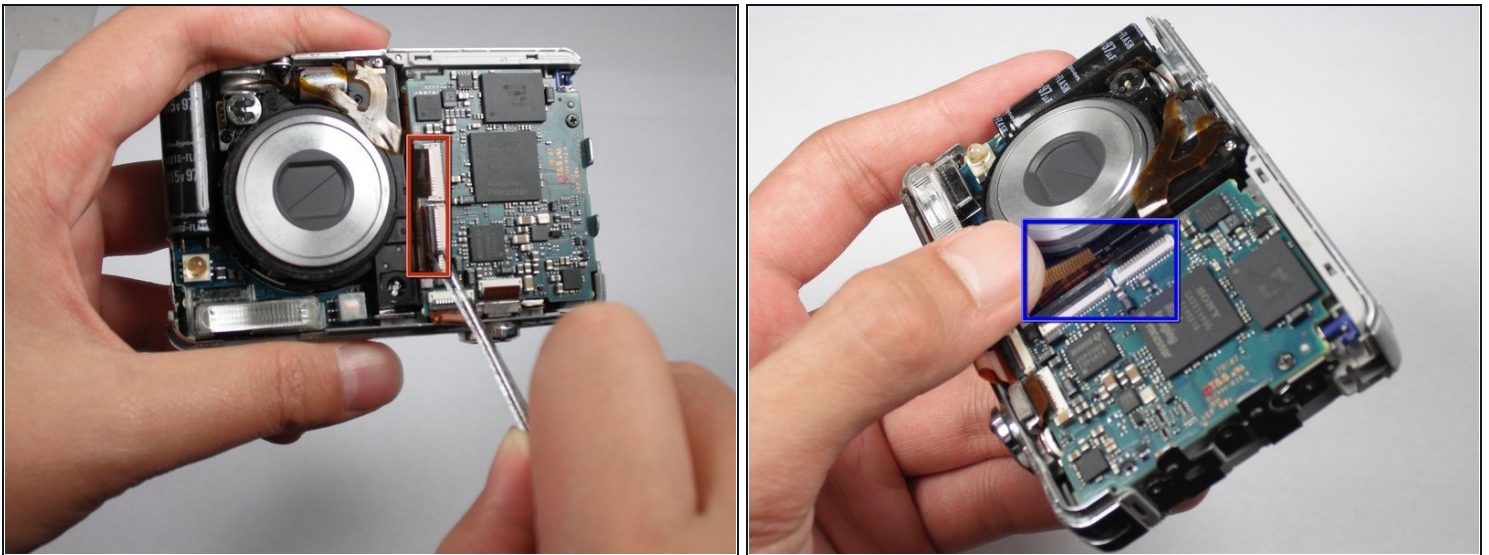
Step 8



- Remove the small screw using a Phillips #00 screwdriver on the bottom of the camera attached to the front cover.
- Gently remove the front cover.

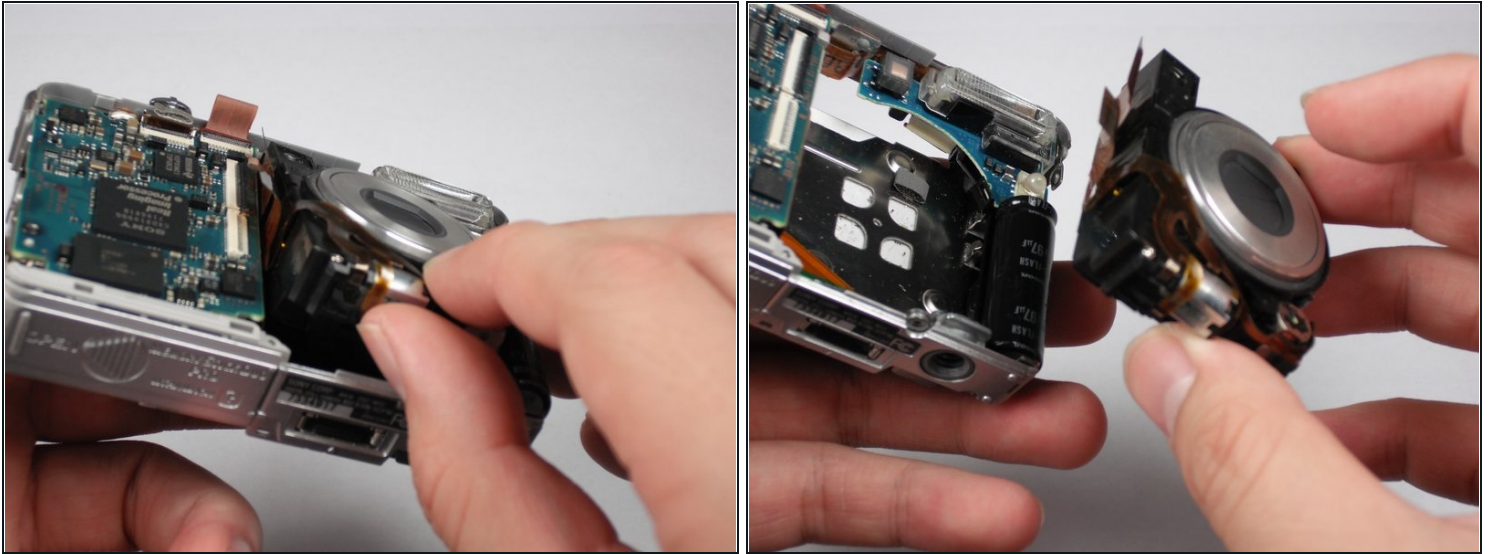
⚠ Put a little force to pop off the case. Proceed with caution.

Step 9 — Lens



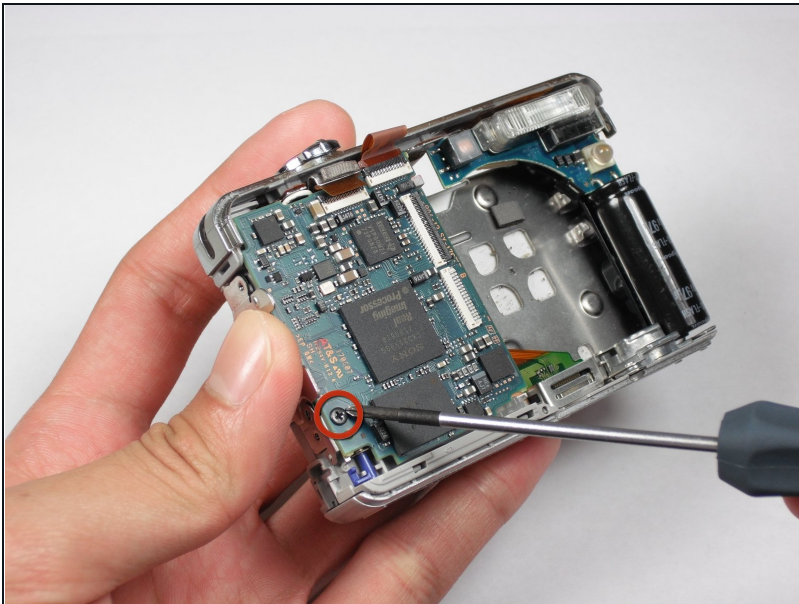
- Flip the black secure locks off. Tweezers may be necessary.
- Detach the two orange cables.

Step 10



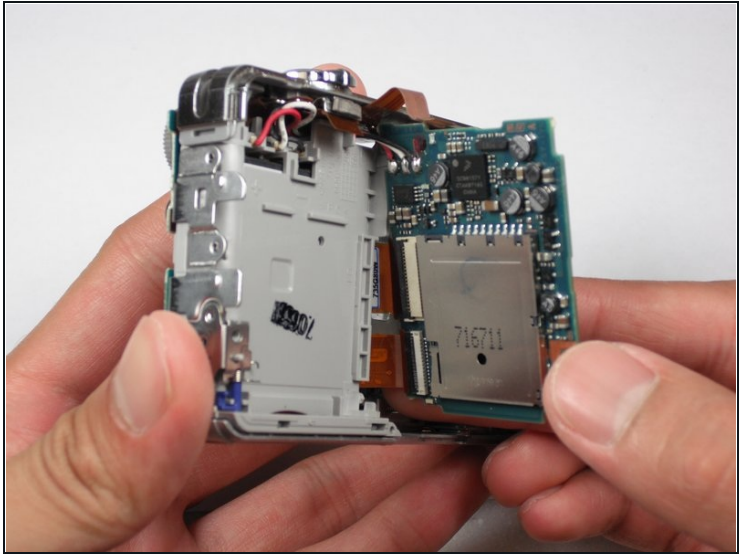
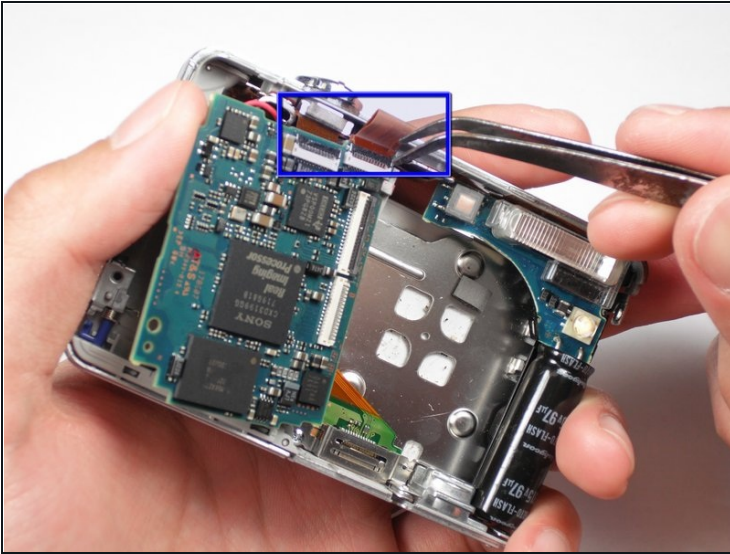
- Gently pull the lens container out of the camera.

Step 11 — Motherboard - First Half



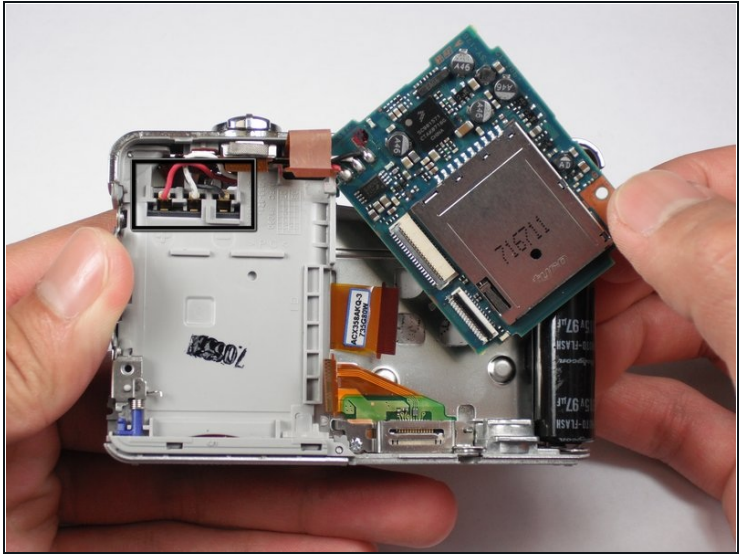
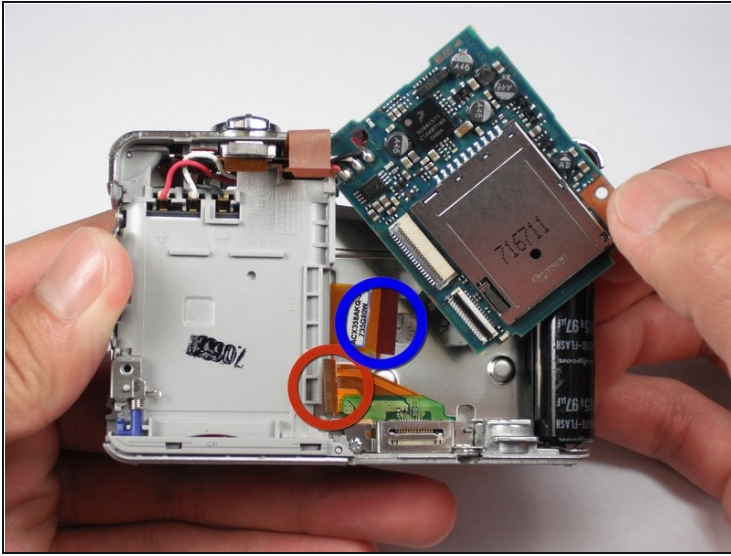
- Remove the black screw using a Phillips #00 Screwdriver on the motherboard.

Step 12



- Remove the two orange cables on the top of the motherboard with tweezers.
- Lift the motherboard out of its slot.

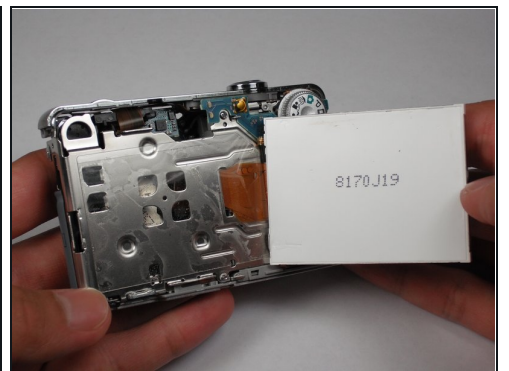
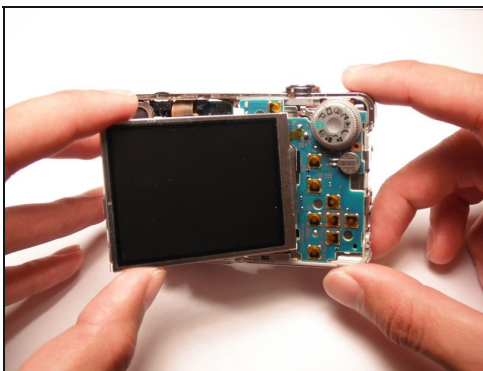
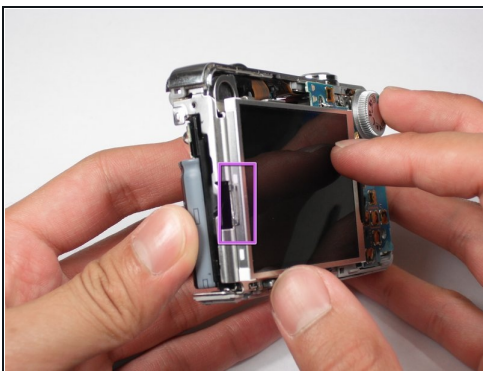
Step 13



- For the AV port, detach the bottom orange cable.
- For the LCD screen, detach the top orange cable on the right side of the motherboard.
- For the motherboard, detach all the orange cables.

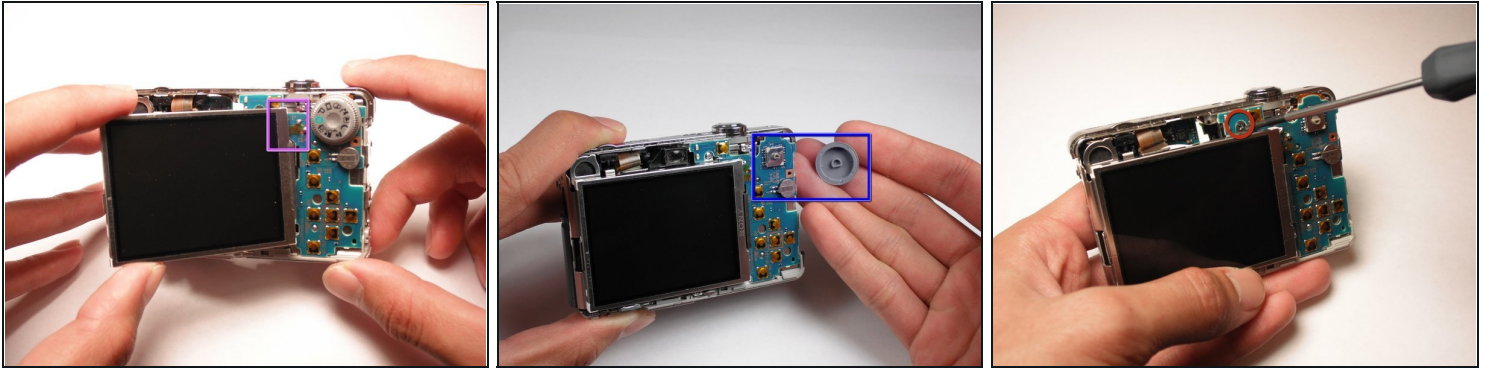
⚠ Careful not to damage the red, white, and black wires when lifting the board.

Step 14 — LCD Screen



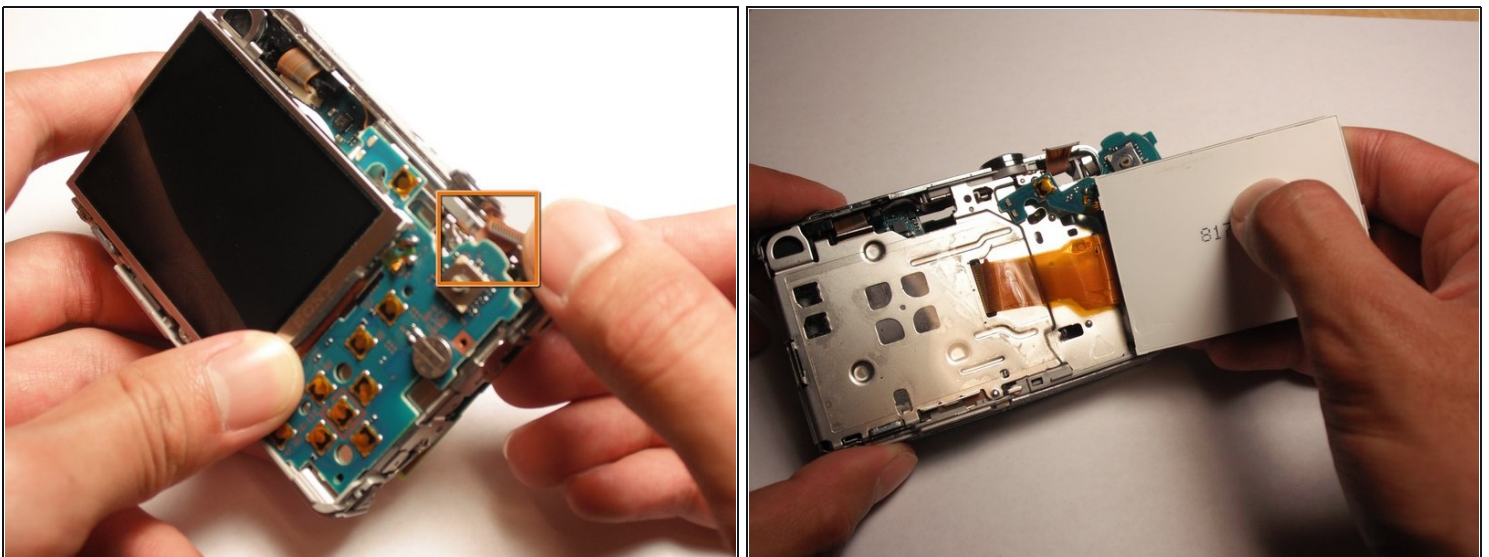
- Verify the orange cables from the motherboard are removed from the LCD screen.
- Lift the LCD screen off the hinge.

Step 15



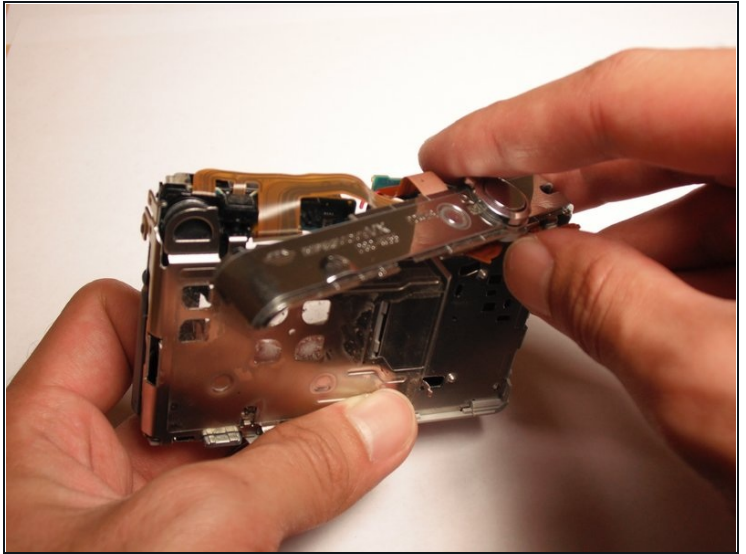
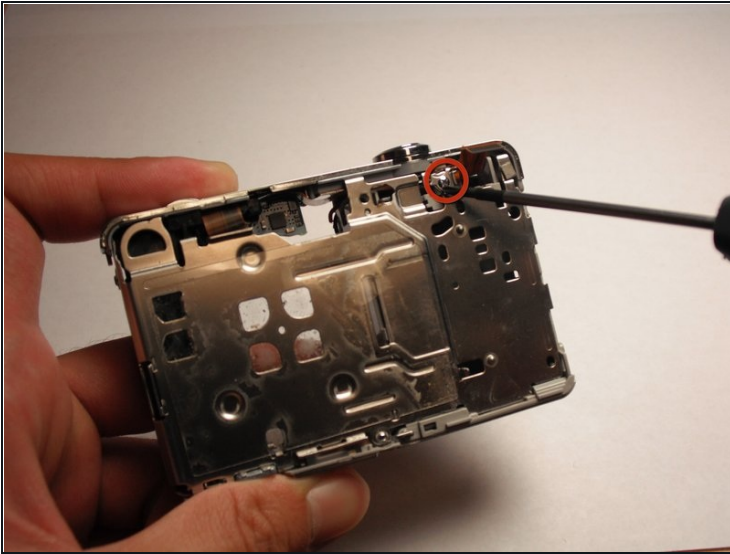
- Verify that the LCD screen is attached to the chip on the back on the camera.
- Remove the dial from the back of the camera. It pops right off very easily.
- Remove the screw using a Phillips #00 Screwdriver from the camera.

Step 16



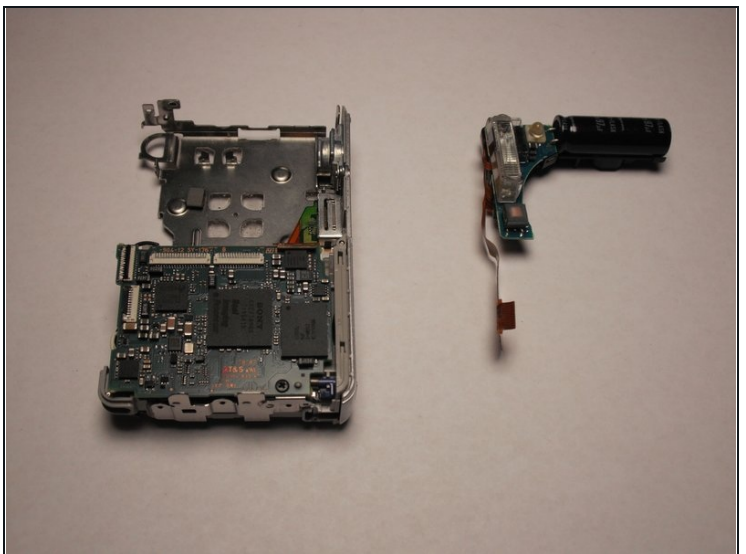
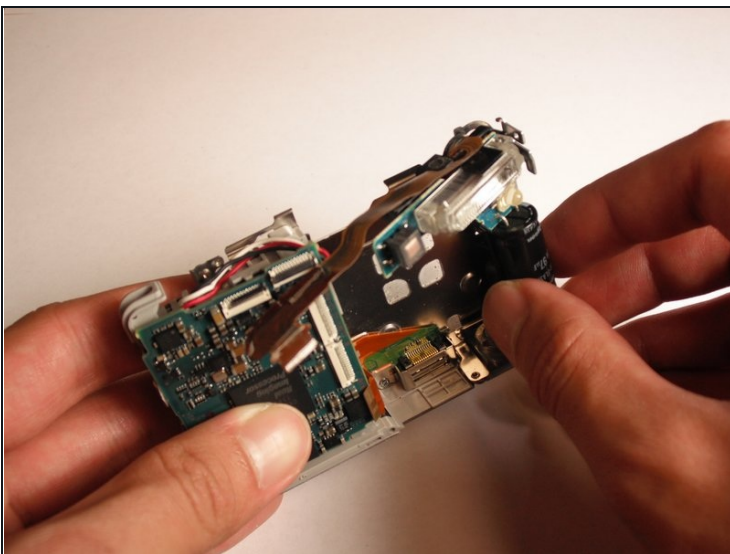
- Remove the orange cable that is attached between the top of the camera and the chip. It should slide straight out with a little bit of force.
- Remove the chip and the LCD screen now from the camera.
- The chip may need a slight upward tug with a fingernail or tweezers.

Step 17 — Flash Assembly



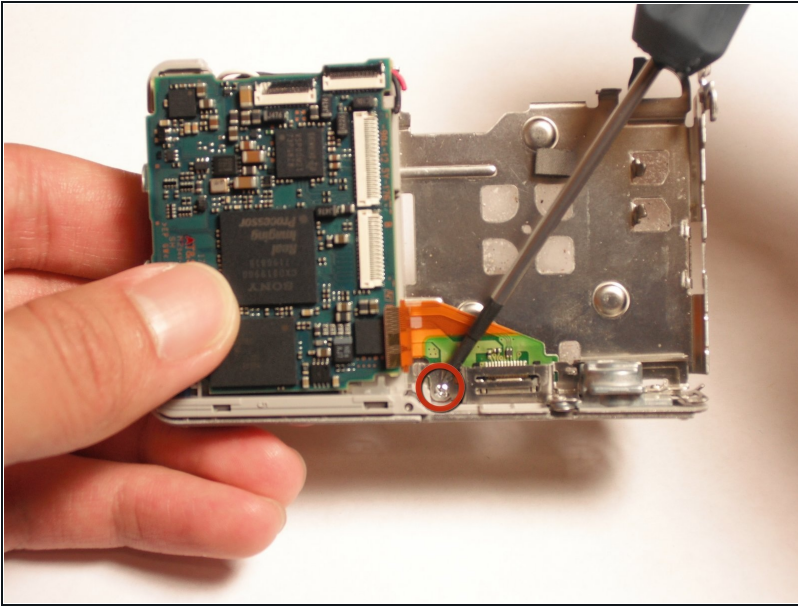
- Verify that the orange cables from the top piece are removed from the motherboard.
 - Remove the screw using a Phillips #00 Screwdriver on the upper part of the back side.
- ⚠ Pull the top off slowly and with caution. It is still slightly attached and may need a little force.

Step 18



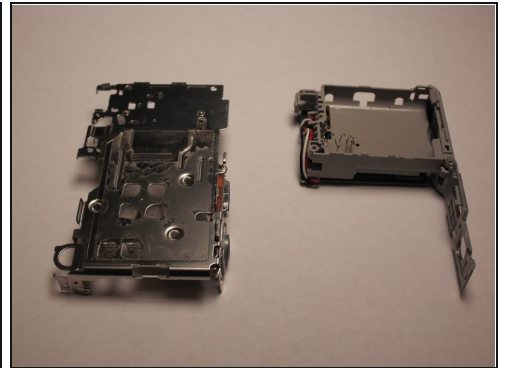
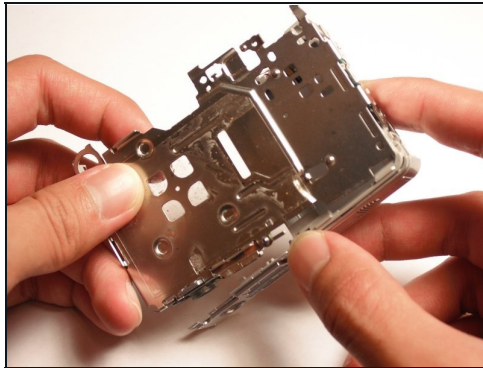
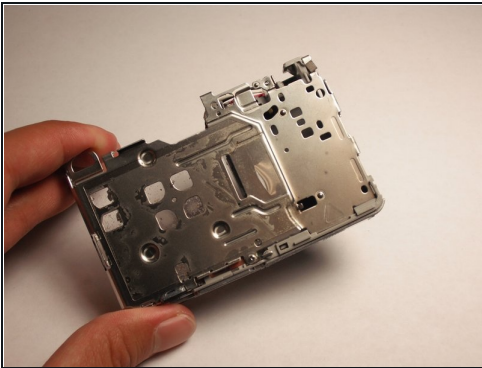
- Slowly twist out the flash assembly.
- It is attached to the hinge so a little force is necessary.

Step 19 — Motherboard - Second Half



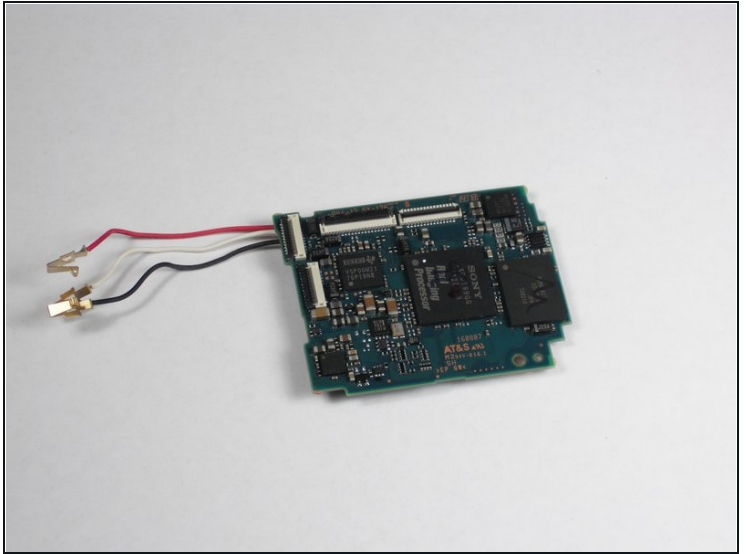
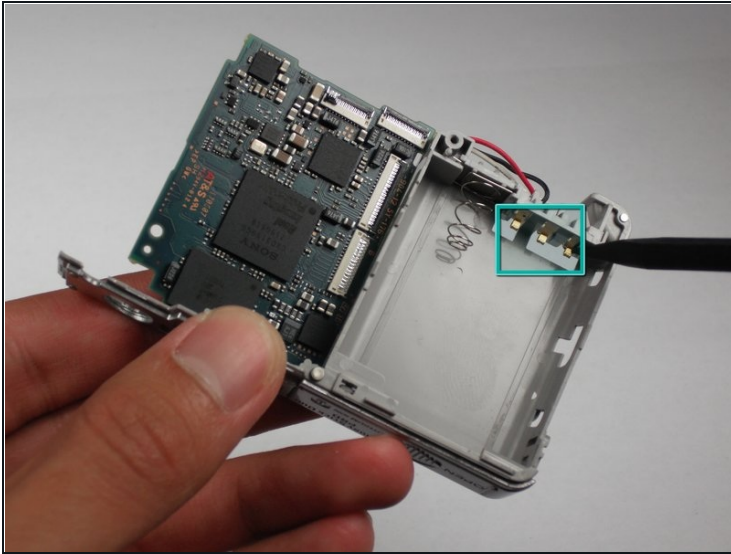
- Verify the red, white, and black cables are still attached to the camera.
- Remove the screw using a Phillips #00 Screwdriver near the AV port

Step 20



- Remove the bottom part of the camera (where the battery is inserted into).
- This should detach the rest into two pieces. Place the other aside.

Step 21



- To remove the crimps, use the spudger to push into gold part of the crimp and pull the wire out gently.

⚠ Careful not to break the crimps from the wires.

- Remove the motherboard from the camera.

To reassemble your device, follow these instructions in reverse order.