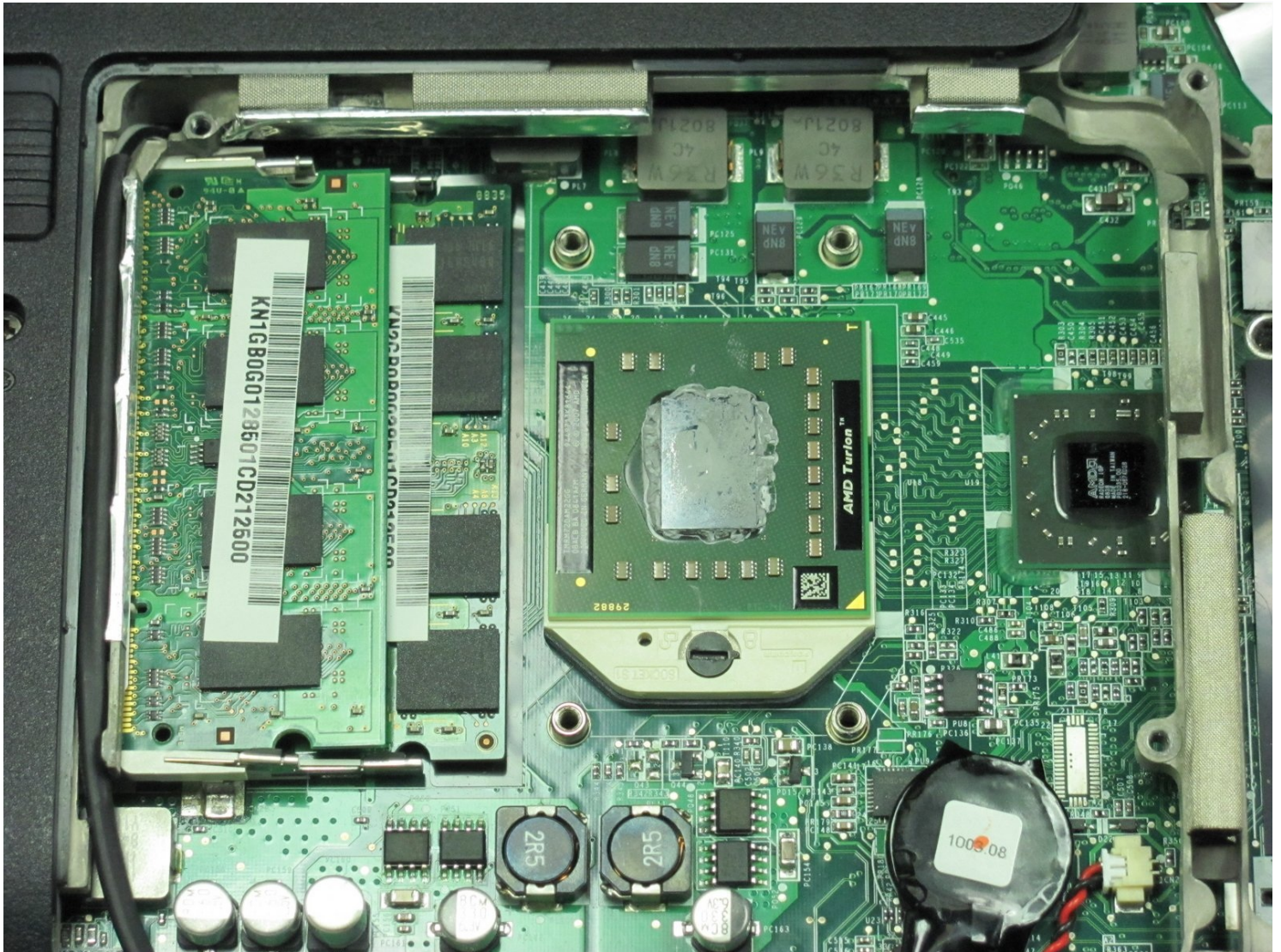




# Gateway MD2614u Processor Replacement

The Central Processing Unit (CPU) is an...

Written By: Toni Pipes



# INTRODUCTION

The Central Processing Unit (CPU) is an integral part of your computer's speed and ability to process information. A damaged CPU may cause your computer to become slow and unstable, resulting in frequent crashes or even inability to boot. Replacing the CPU will enhance the speed and overall performance of your device. Because of its importance, it can get very expensive to replace. This simple and easy-to-follow guide that requires no special skills will walk you through the steps of replacing the CPU for a Gateway MD2614u.

## TOOLS:

Phillips #00 Screwdriver (1)

2.5 mm Flathead Screwdriver (1)

## Step 1 — Back Cover



- Place the laptop so the back cover is facing up.



## Step 2



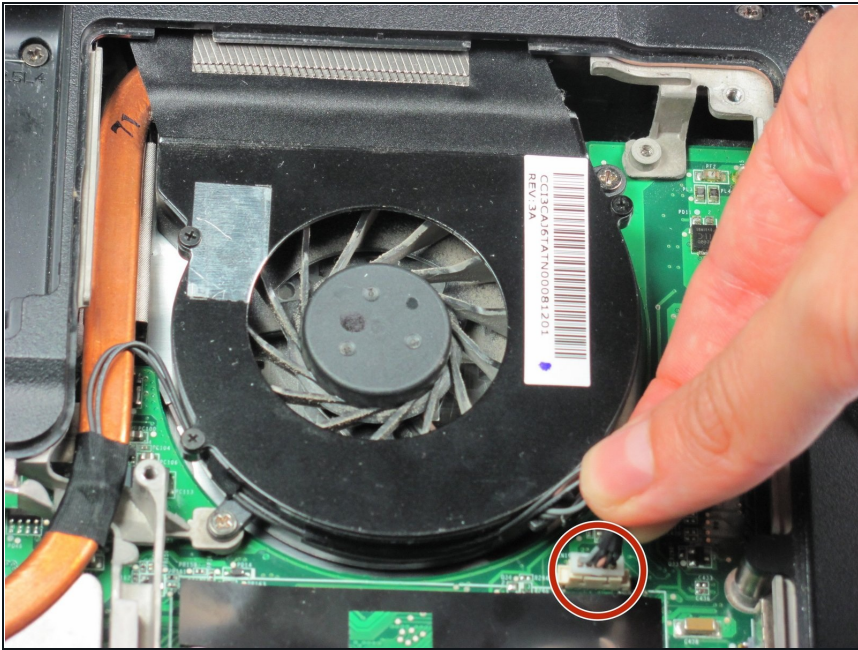
- Remove the 8 screws from the back cover using the Phillips #00 screwdriver.

## Step 3



- Lift off the cover.

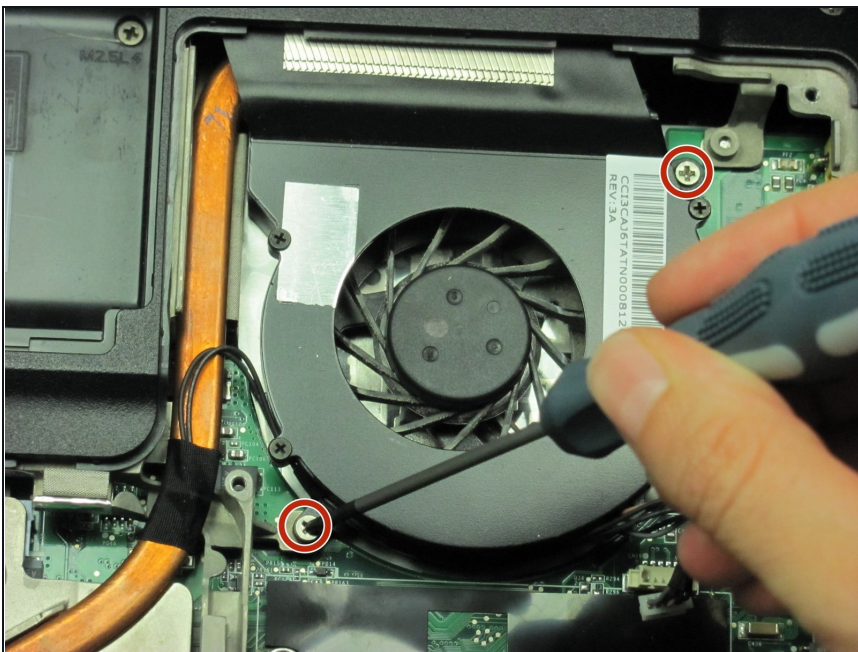
## Step 4 — Fan



- Unplug the fan's power cable, which is a group of black wires attached to a white plastic head on the motherboard.

⚠ Pull the plastic part of the cable, not the wires, so that the plug does not break.

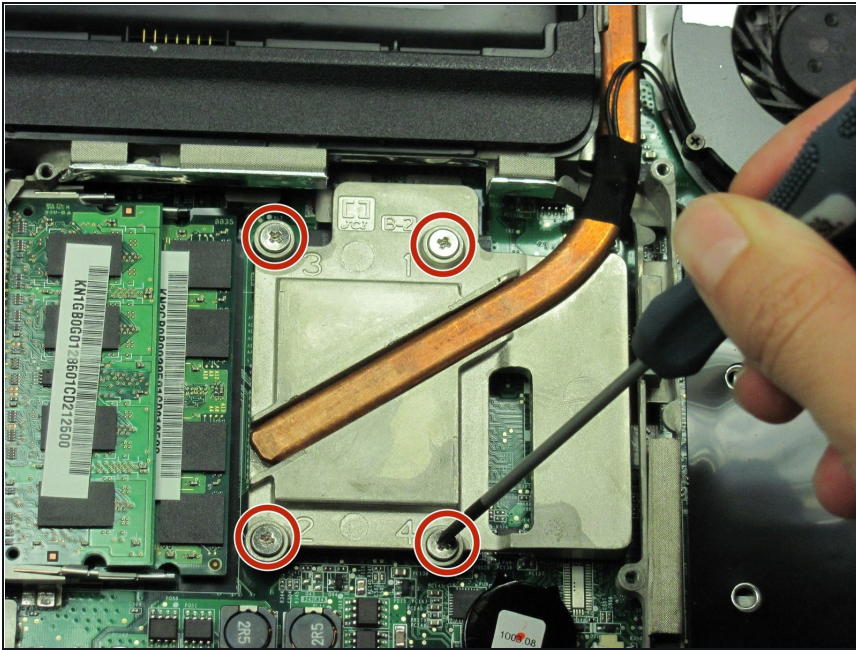
## Step 5



- Remove the two screws located on opposite sides of the fan with a Phillips #00 screw driver.

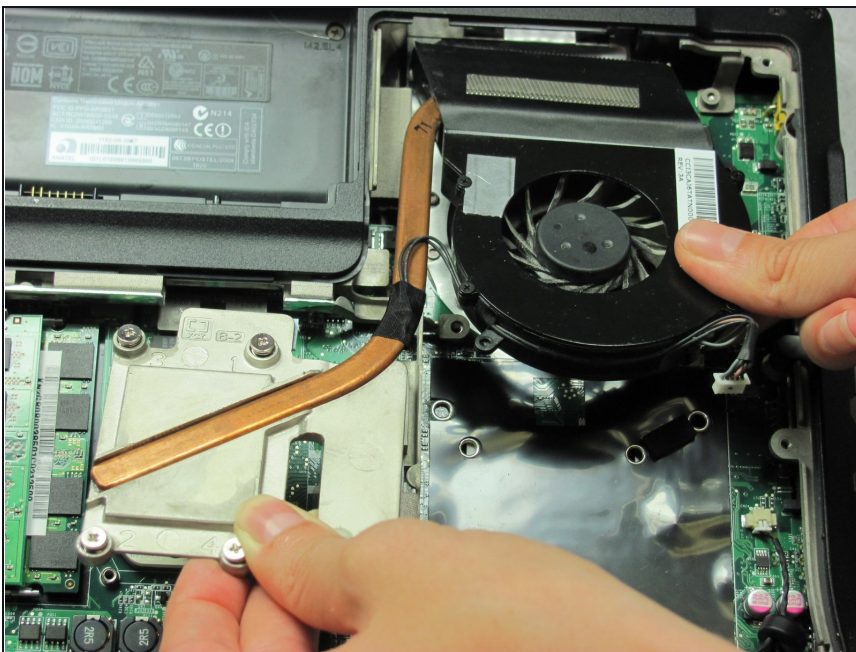


## Step 6



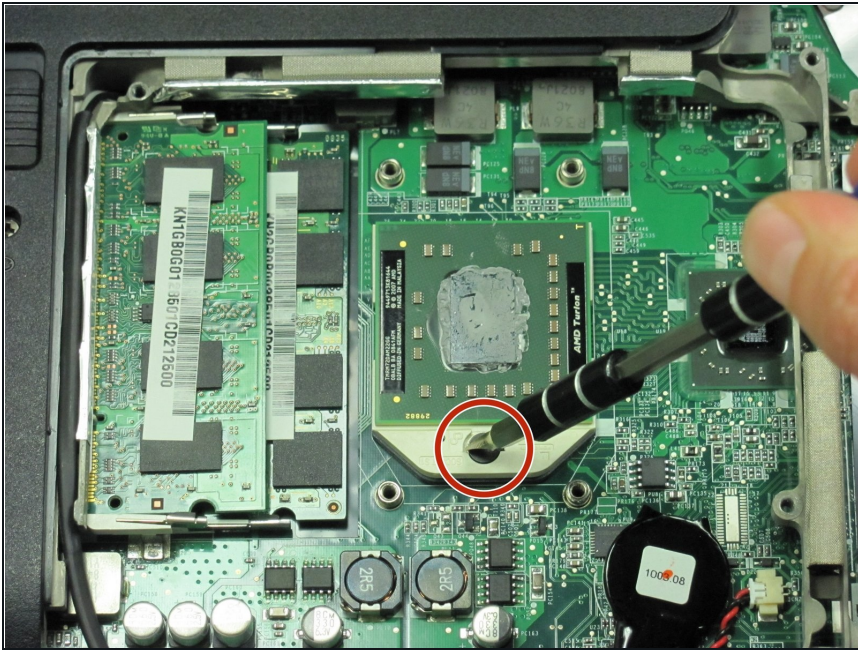
- The fan is permanently attached to the silver heat sink next to the RAM.
- To completely remove the parts, loosen the heat sink's four screws with a Phillips #00 screw driver.
- ① Take out the screws in the numerical order shown on the heat sink.

## Step 7



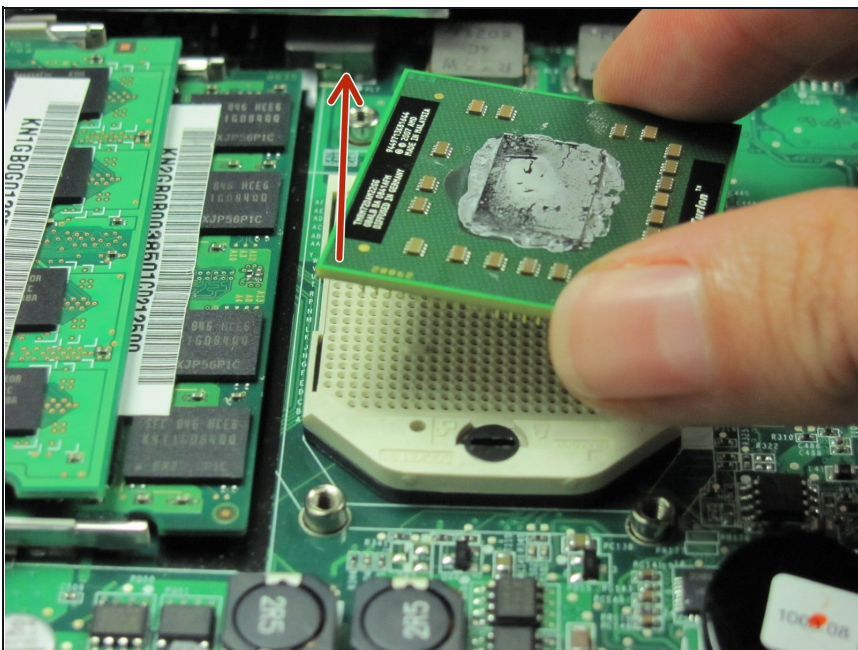
- Pull the fan and heat sink toward you at a 20 degree angle upward.

## Step 8 — Processor



- The CPU is located under the heat sink you just removed.
- ⓘ It is a green card on a white plastic surface. There is a black lock on one side of the plastic.
- Rotate the CPU lock 180 degrees counterclockwise with a [3.0 mm Flathead](#) screwdriver.
- ⓘ If done correctly, the lock makes a clicking noise when unlocked.

## Step 9



- Place your fingers on opposite edges of the green card.
- Carefully lift the CPU upward.

---

To reassemble your device, follow these instructions in reverse order.