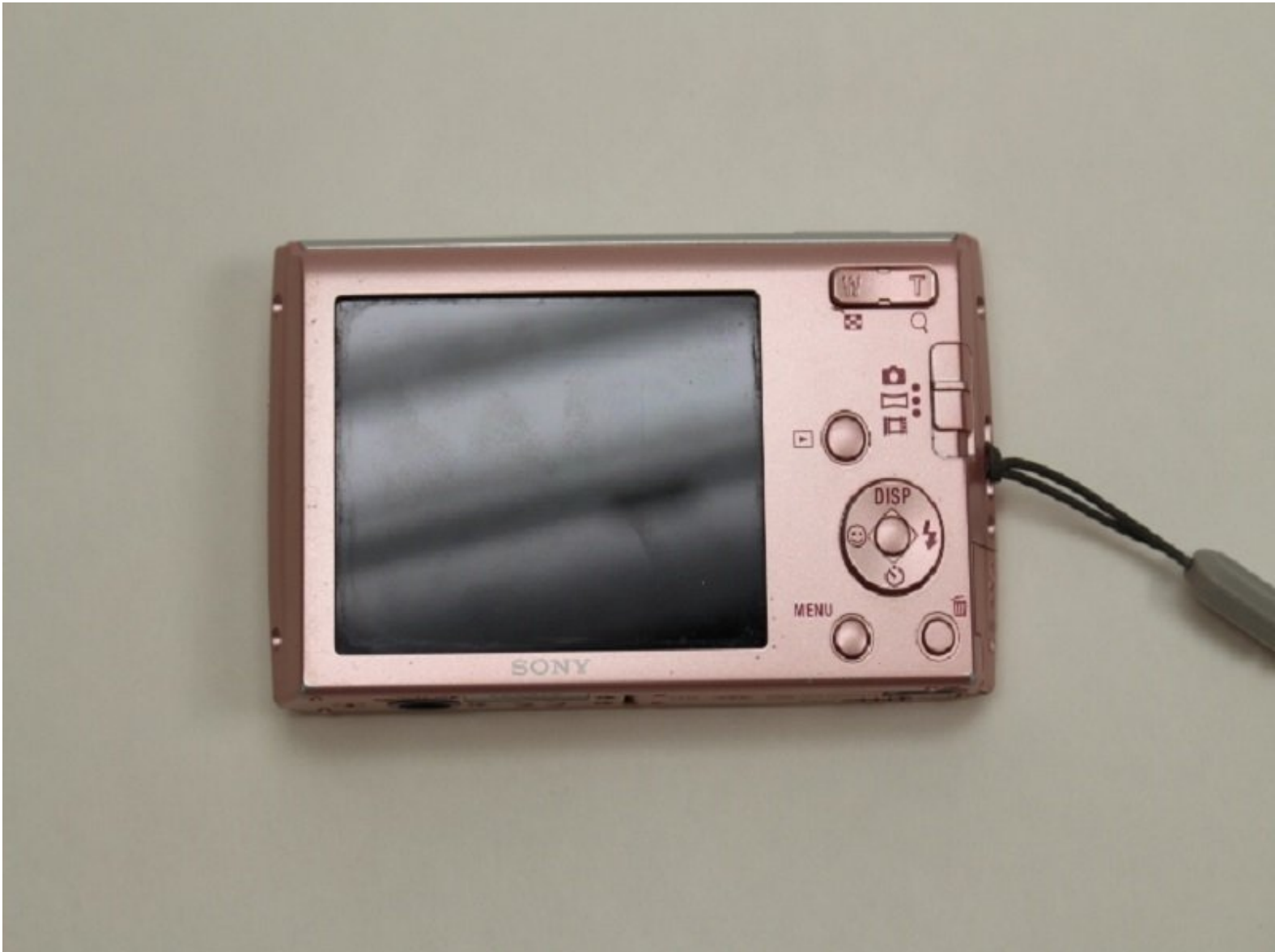




Sony Cyber-shot DSC-W510 LCD Screen Replacement

Replacing the Sony Cybershot DSC-W510 LCD Screen. A replacement screen only costs \$10.

Written By: kyle



INTRODUCTION

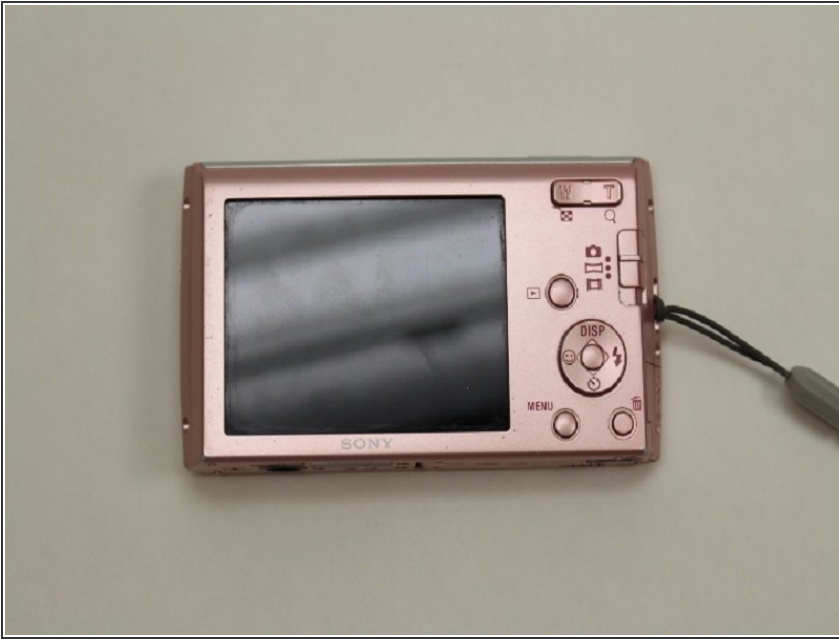
How to replace the LCD screen from the Sony Cyber-shot DSC-W510.



TOOLS:

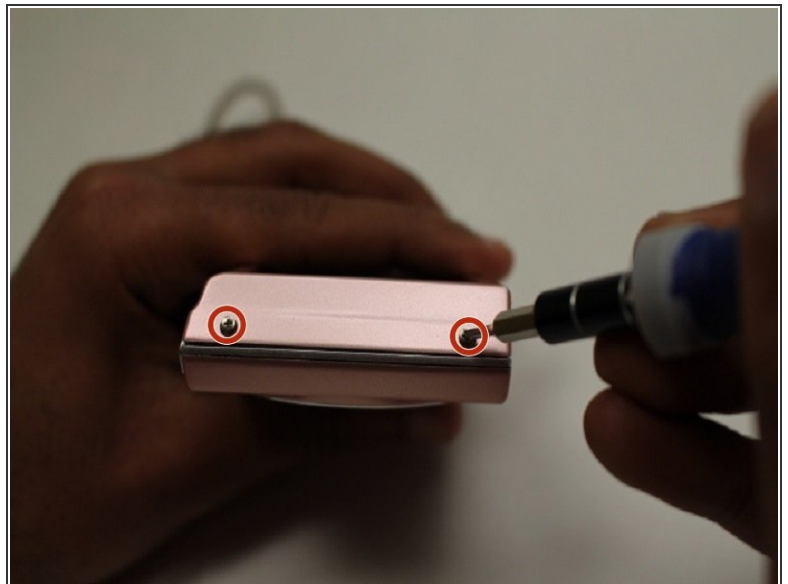
- [Phillips #00 Screwdriver](#) (1)
 - [iFixit Opening Tools](#) (1)
 - [Magnetic Project Mat](#) (1)
-

Step 1 — LCD Screen



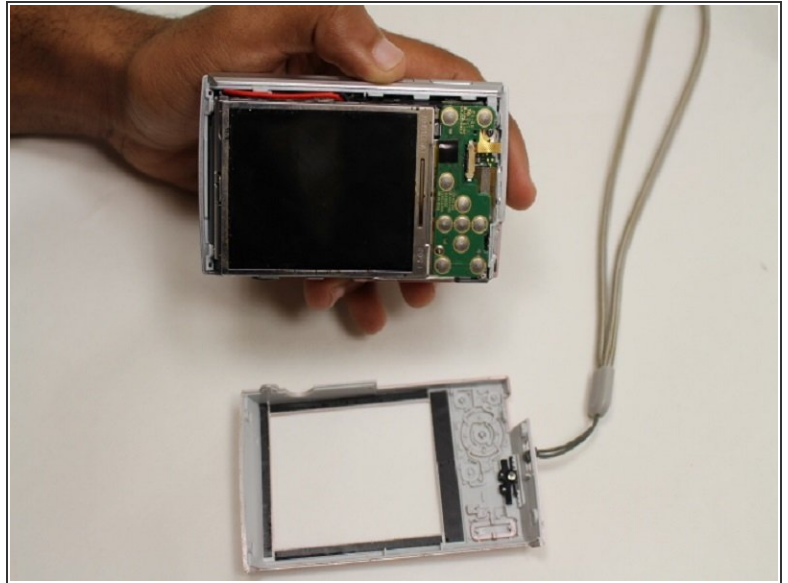
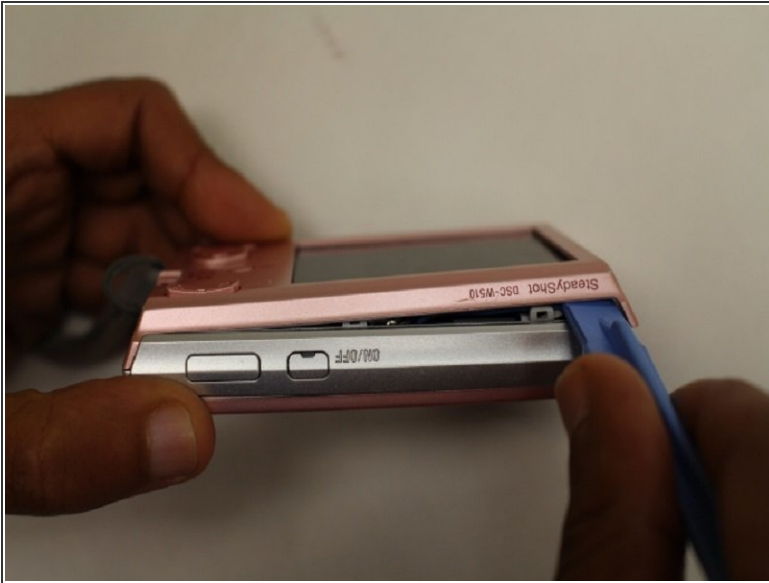
- Place the Sony Cyber-shot DSC-W510 on the magnetic project mat. This will help keep the small screws organized.

Step 2 — Unscrew



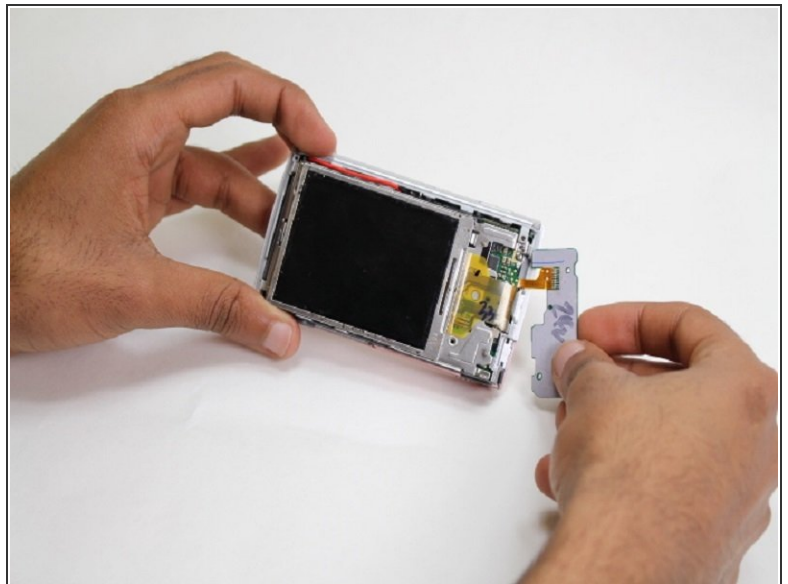
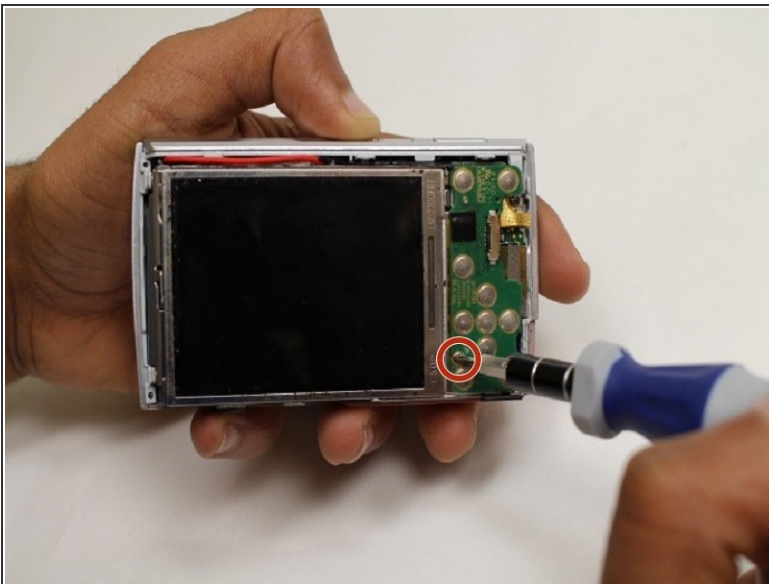
- Using the Phillips #00 screwdriver, unscrew the outside screws from the frame of the camera.
- There are five screws on the bottom of the camera and two on the side.
- ⓘ If the screws are stripped, visit the [Removing a Stripped Screw Guide](#).

Step 3



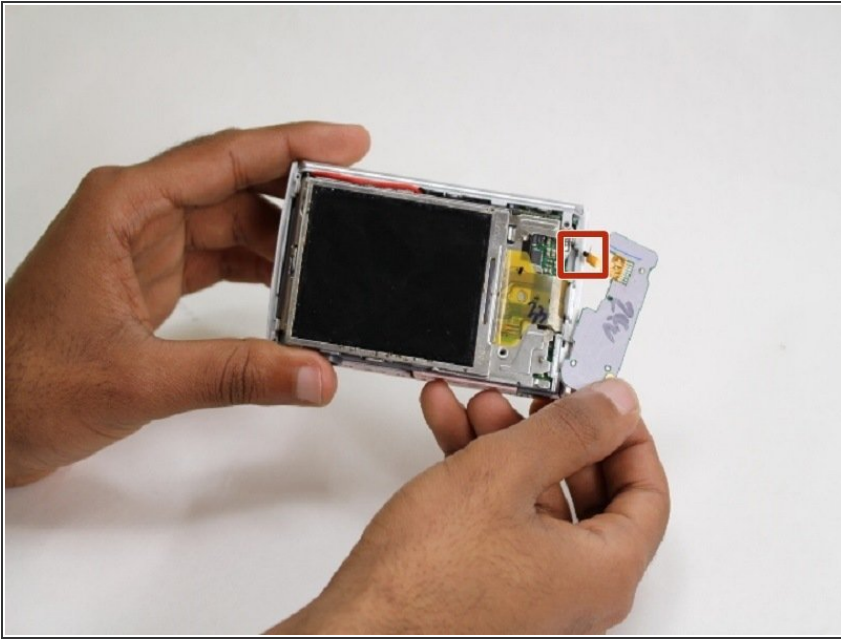
- Pry open the screen frame using a plastic opening tool.
- It may be necessary to start by prying at one end of the screen and moving around the edge of the screen frame, until it pops out.

Step 4



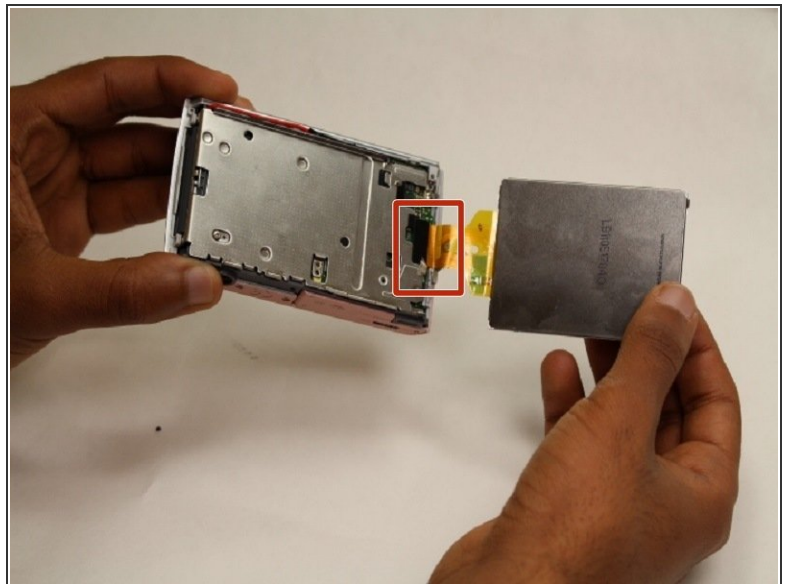
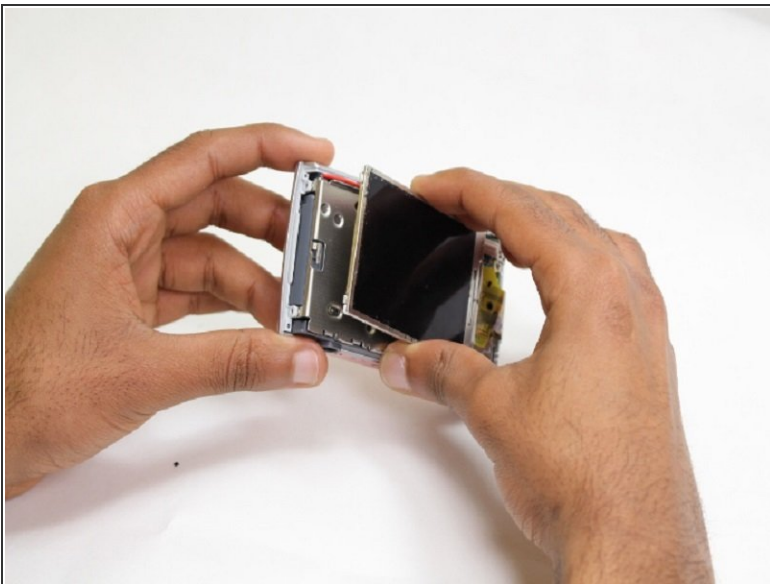
- Using the screw driver, unscrew the one screw on the control panel board.

Step 5



- Gently unplug the control panel from the motherboard outlet.

Step 6



- Using your hands, pry open the LCD screen from the metal board.
- Gently unplug the LCD screen from the motherboard.

To reassemble your device, follow these instructions in reverse order.