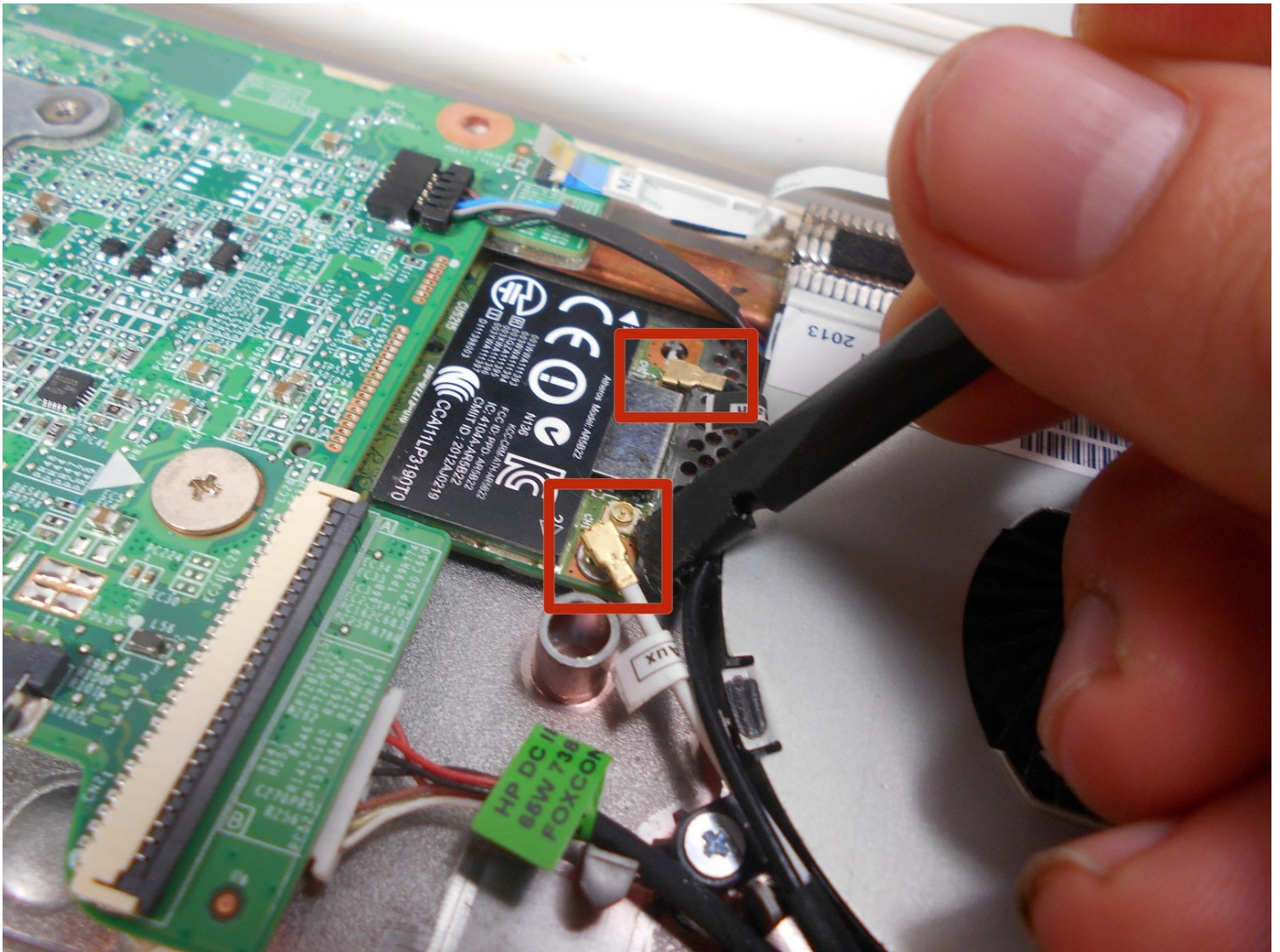




HP Chromebook 14-Q010DX Bluetooth and Wireless Card Replacement

This guide will require removal of 1x3mm screws...

Written By: Kevin Piper



INTRODUCTION

This guide will require removal of 1x3mm screws on the bluetooth and wireless card.

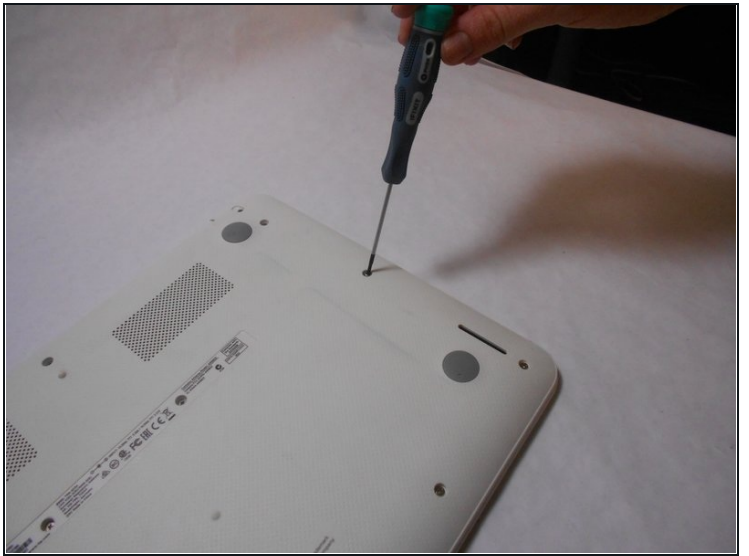
TOOLS:

Phillips #00 Screwdriver (1)
iFixit Opening Tool (1)
Spudger (1)

PARTS:

HP Atheros AR9462 802.11a/b/g/n 2x2
Bluetooth 4.0 Combo Adapter spare
part #676786-005 (1)

Step 1 — Keyboard and Touchpad



- Flip the laptop with the base of the laptop is facing you.
- Using the #00 screwdriver, unscrew these screws.

Step 2



⚠ Warning! When prying open a laptop it could require some force, but it also has fragile connectors underneath. Use caution so as to avoid breaking these connectors.

- Start from the top right corner of the laptop and work clockwise with an iFixit opening tool or spudger to pry the keyboard from the frame of the laptop.

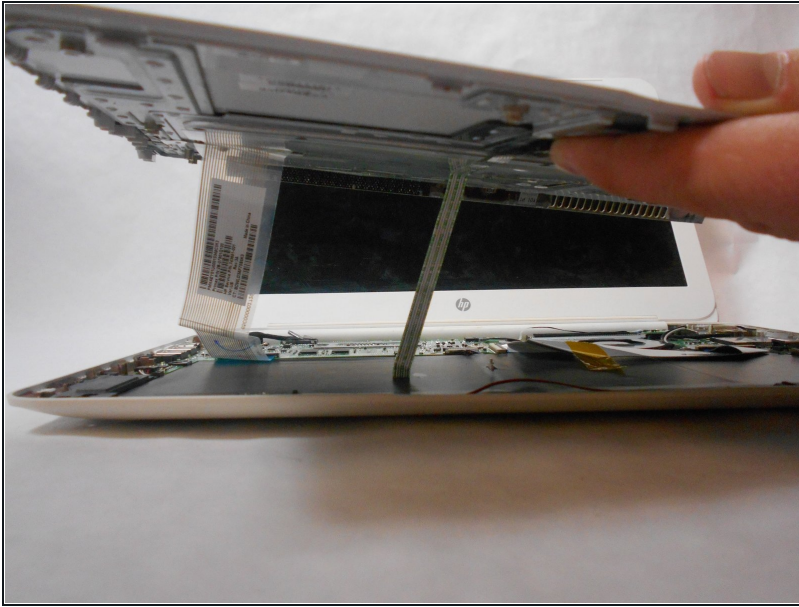
Step 3



⚠ Warning! Handle the flaps and ribbon cables with care to prevent damage.

- Gently pull the keyboard in the opposite direction of the screen, so the wires beneath are exposed.
- Lift the black flap and pull the blue ribbon gently towards you until it is disconnected.
- Lift the white flap and pull the blue ribbon towards you until it is disconnected.

Step 4



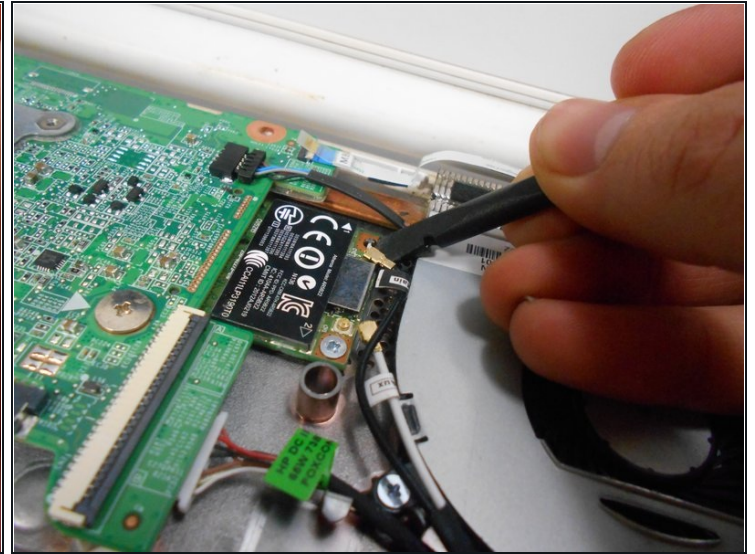
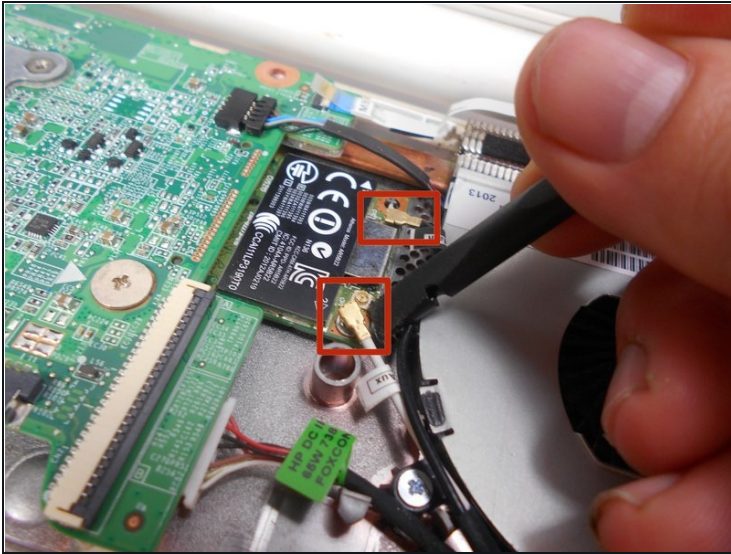
- Lift keyboard slightly and remove the strip gently to prevent damaging any parts.
- ① The tape has no function other than to keep the wire tucked away.

Step 5



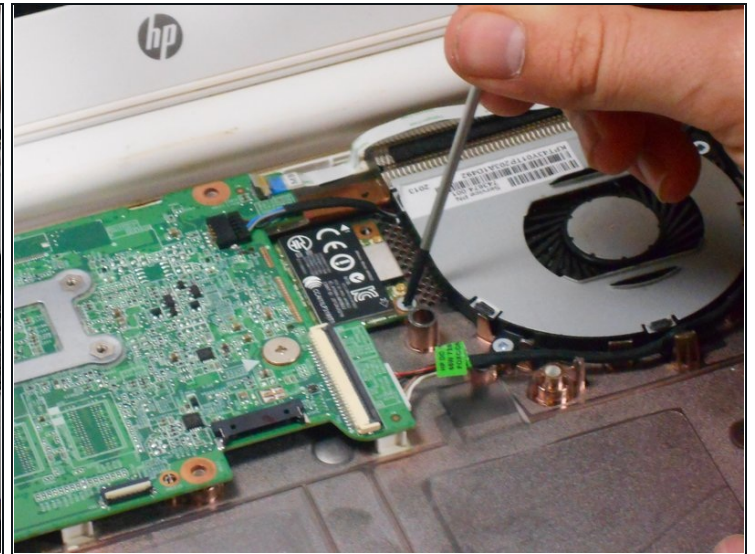
- Set aside the detached keyboard.

Step 6 — Bluetooth and Wireless Card



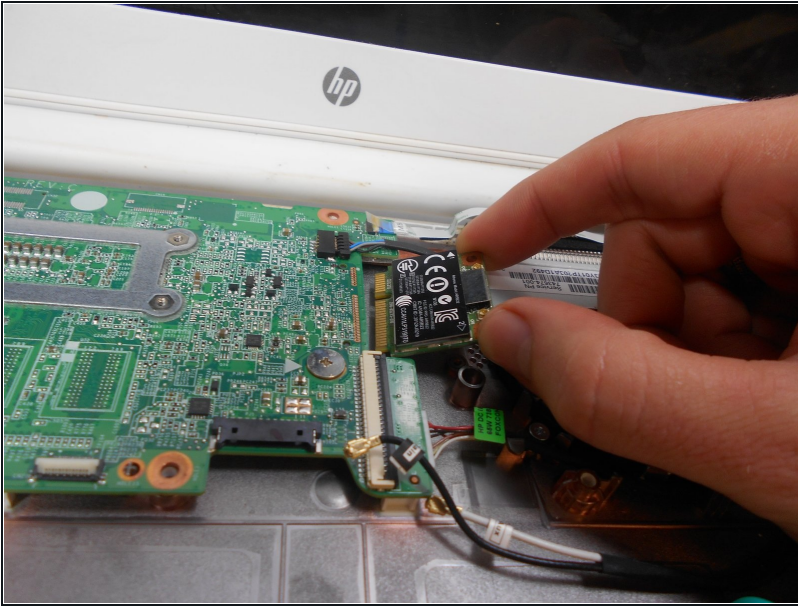
- Using a spudger, remove the white and black cables from the card.

Step 7



- Remove screw from card.

Step 8



- Gently pull card at a 45° angle to remove it.

To reassemble your device, follow these instructions in reverse order.