



# Toshiba Tecra 8200 RAM Replacement

Follow this guide to replace the RAM of the Toshiba Tecra 8200.

Written By: Sally



## INTRODUCTION

This guide demonstrates how to properly remove and replace a Toshiba Tecra 8200 RAM in order to preserve the function of the device.



### TOOLS:

- [iFixit Opening Tools](#) (1)
  - [Phillips #00 Screwdriver](#) (1)
-

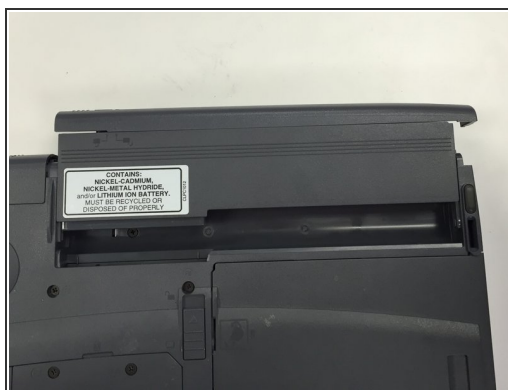
## Step 1 — Battery



⚠ Turn off the device and unplug the power cord.

- To remove the battery, flip the device, so that the bottom is facing upward.

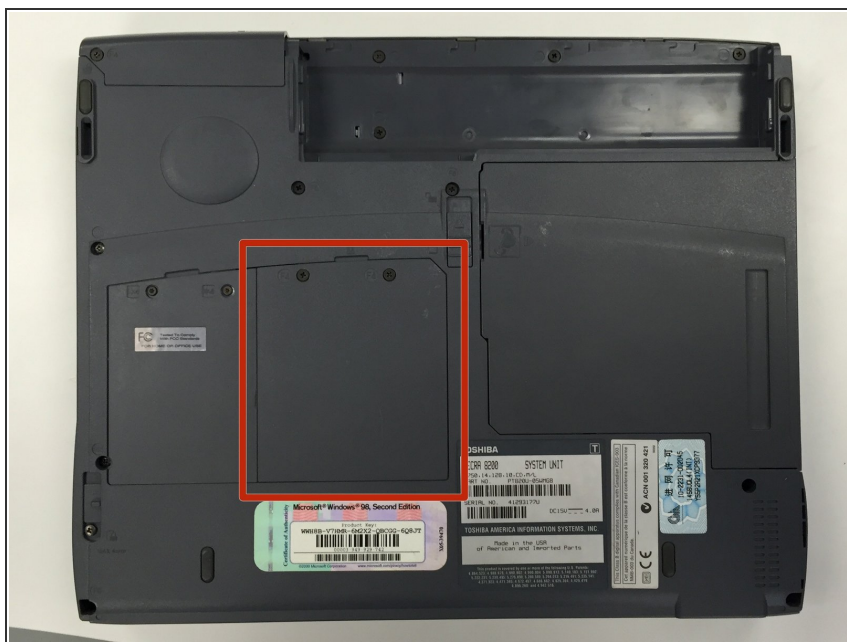
## Step 2



- Slide the battery to the right side until you hear a click.
- Carefully remove the battery from its compartment.

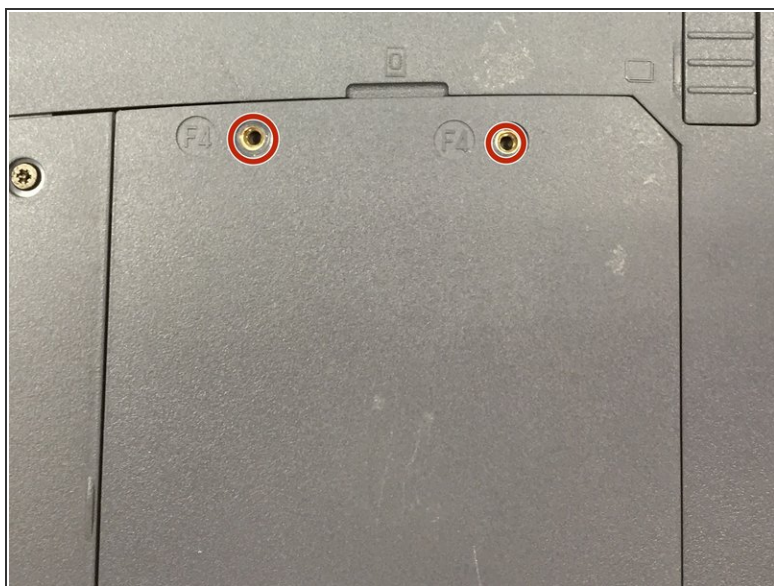


## Step 3 — RAM



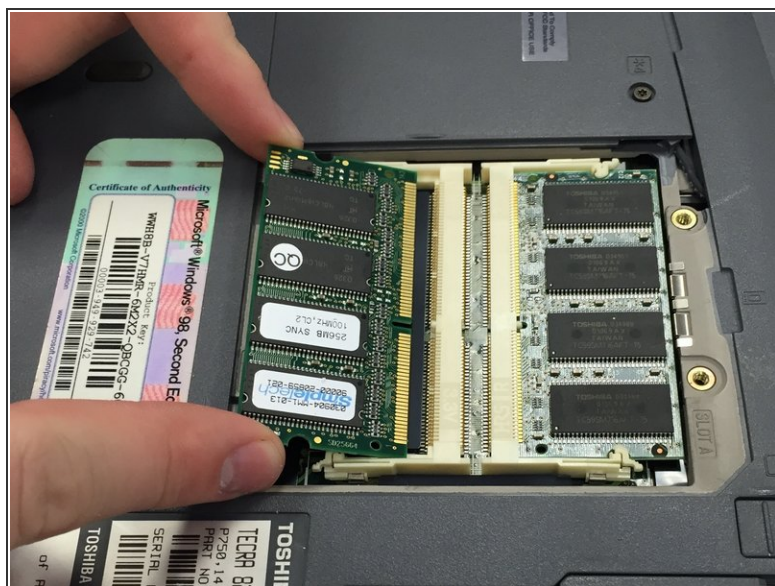
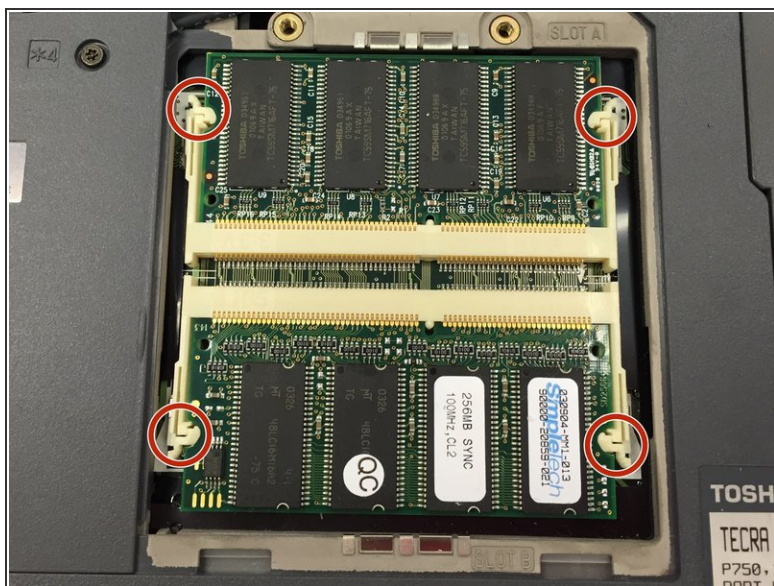
- Position device so the screen is face down.
- Locate RAM Panel.

## Step 4



- Remove two Phillips #00 screws labeled F4.
- Remove panel.

## Step 5



- Pinch clips on each side of RAM chips to release.
- Gently remove RAM chips at a 45 degree angle. Use a plastic opening tool if RAM chips do not pop open.

To reassemble your device, follow these instructions in reverse order.