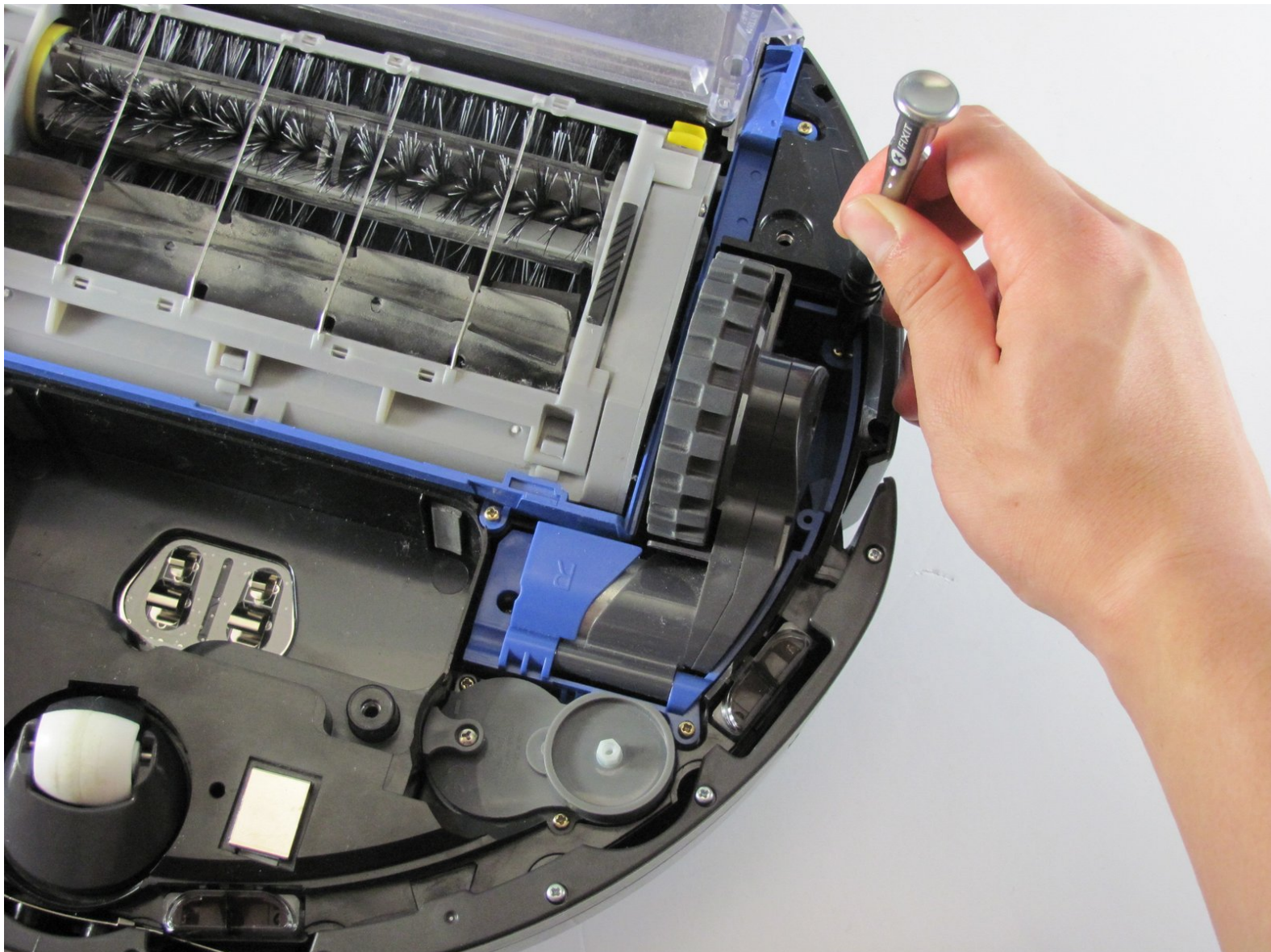




iRobot Roomba 655 Pet Series Drive Wheels Replacement

How to remove your drive wheels on your Roomba

Written By: Rhett



INTRODUCTION

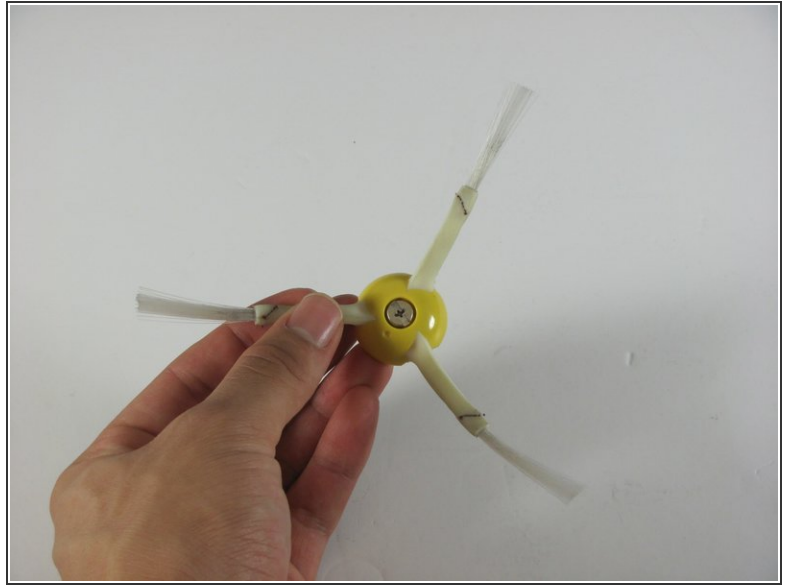
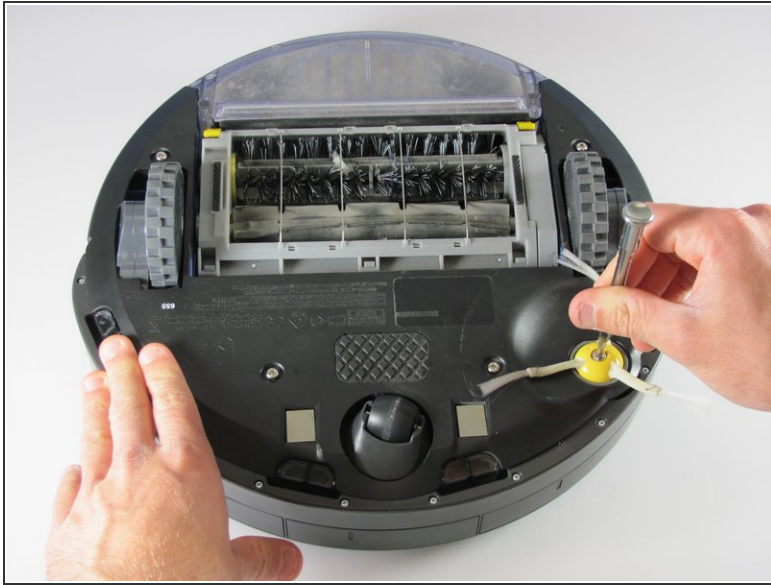
Sometimes you just want a some new wheels right?! This guide will show you how to replace the wheels that drive your Roomba to become the cleaning machine that it is.



TOOLS:

- [Phillips #1 Screwdriver](#) (1)
 - [Phillips #2 Screwdriver](#) (1)
-

Step 1 — Removing the Side Brush



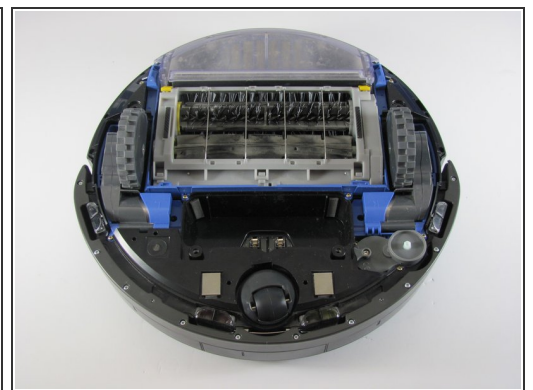
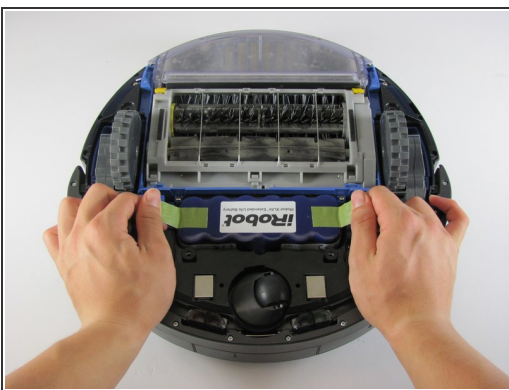
- Flip the device over onto its back.
 - Find the side brush, and unscrew the single screw that connects to brush motor by using the Phillips head #2 screwdriver.
- i** *This screw doesn't completely come out of the yellow side brush.*

Step 2 — Removing the Back Panel



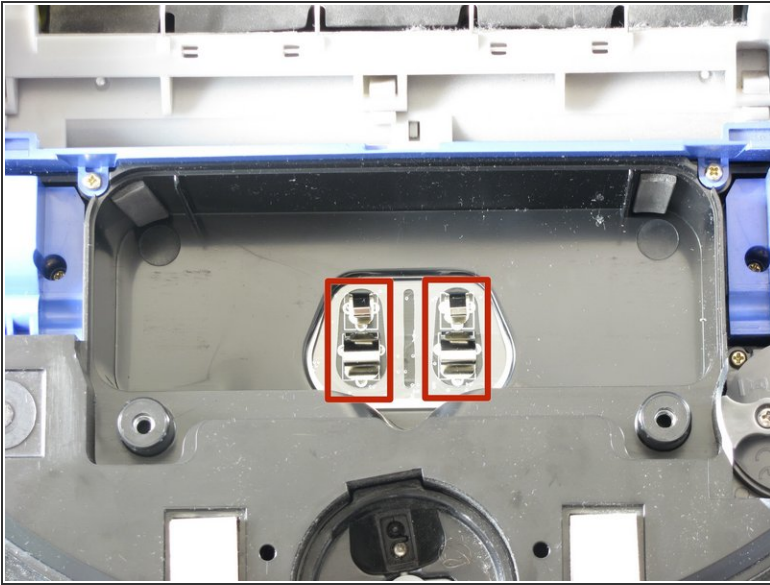
- Using a Phillips #1 screwdriver, remove the four screws on the back panel.
- Once the screws are loose gently pry the back plate away from the body by using the spudger tool.
- ⓘ *The screws don't completely come out of the panel, but it will still come apart once unscrewed.*

Step 3 — Removing the Battery



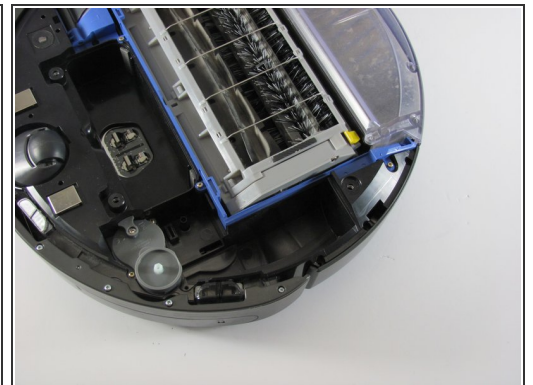
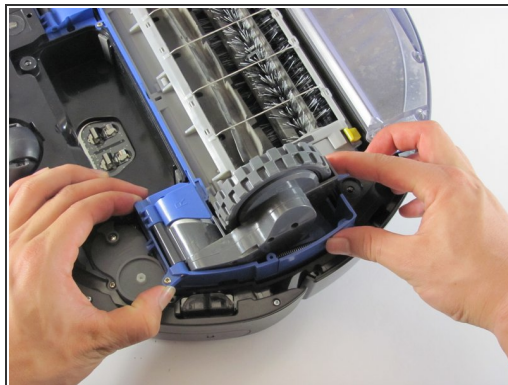
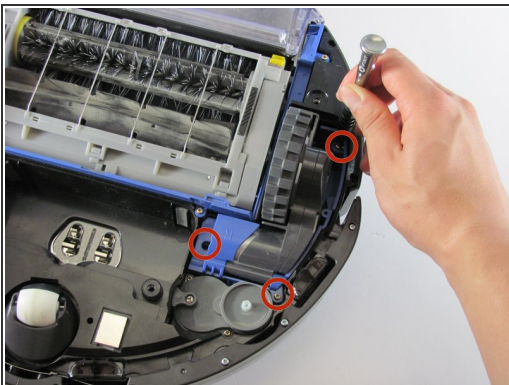
- Grab the two pieces of green tape with your thumb and index finger
- Pull up on the battery in an upwards direction to remove it

Step 4 — Battery Contact Points



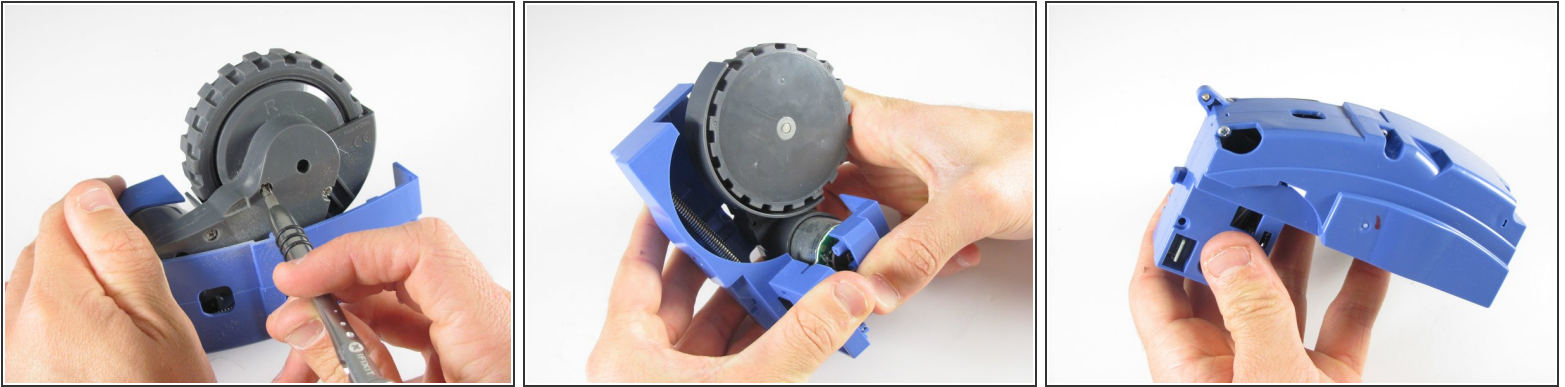
- These are the contact points on the Roomba for the battery
- These are the contact points on the battery
- ⓘ If these contact points are dirty, they can be cleaned with a moist microfiber cloth (distilled water recommended)

Step 5 — Drive Wheels



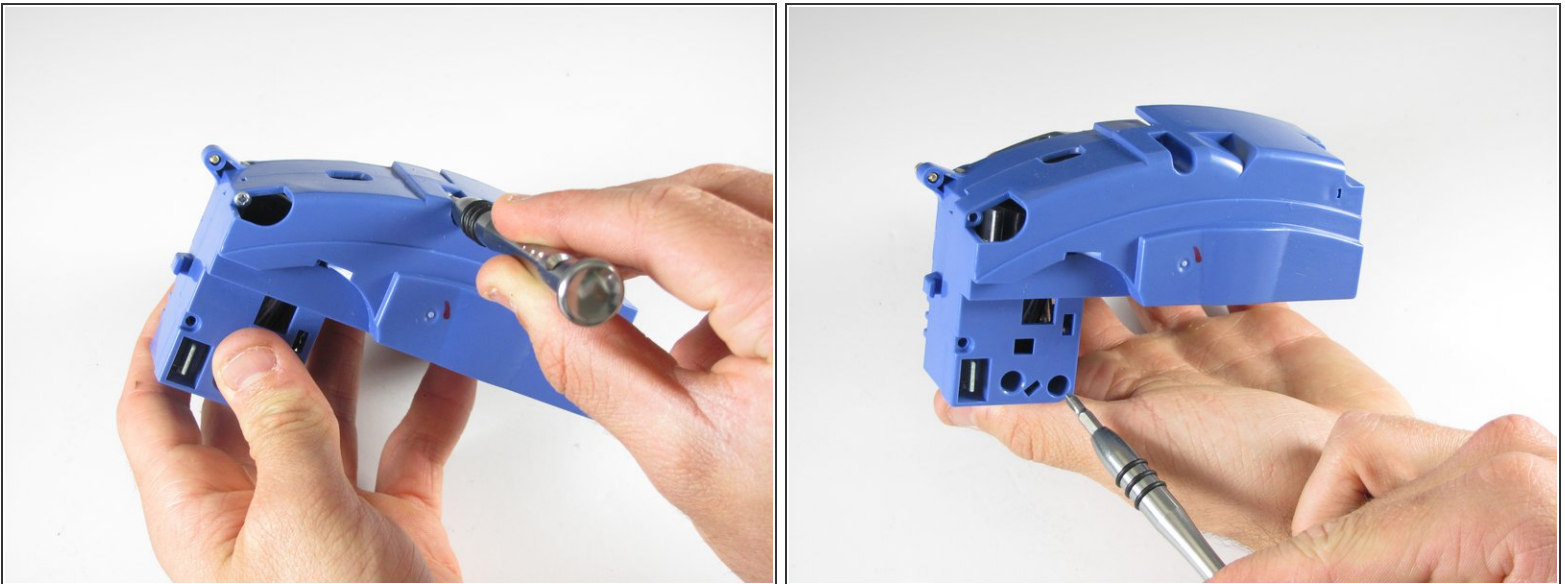
- Remove the three screws with your Phillips head #1, holding the drive wheels in place
- ⓘ These three screws will stay in place and won't come out of the plastic

Step 6



- Unscrew the actual wheel from the blue plastic holder
- Pull apart the blue holder to completely remove the wheel

Step 7



- To go further into the holder to access the programming chips you can unscrew these compartments

To reassemble your device, follow these instructions in reverse order.