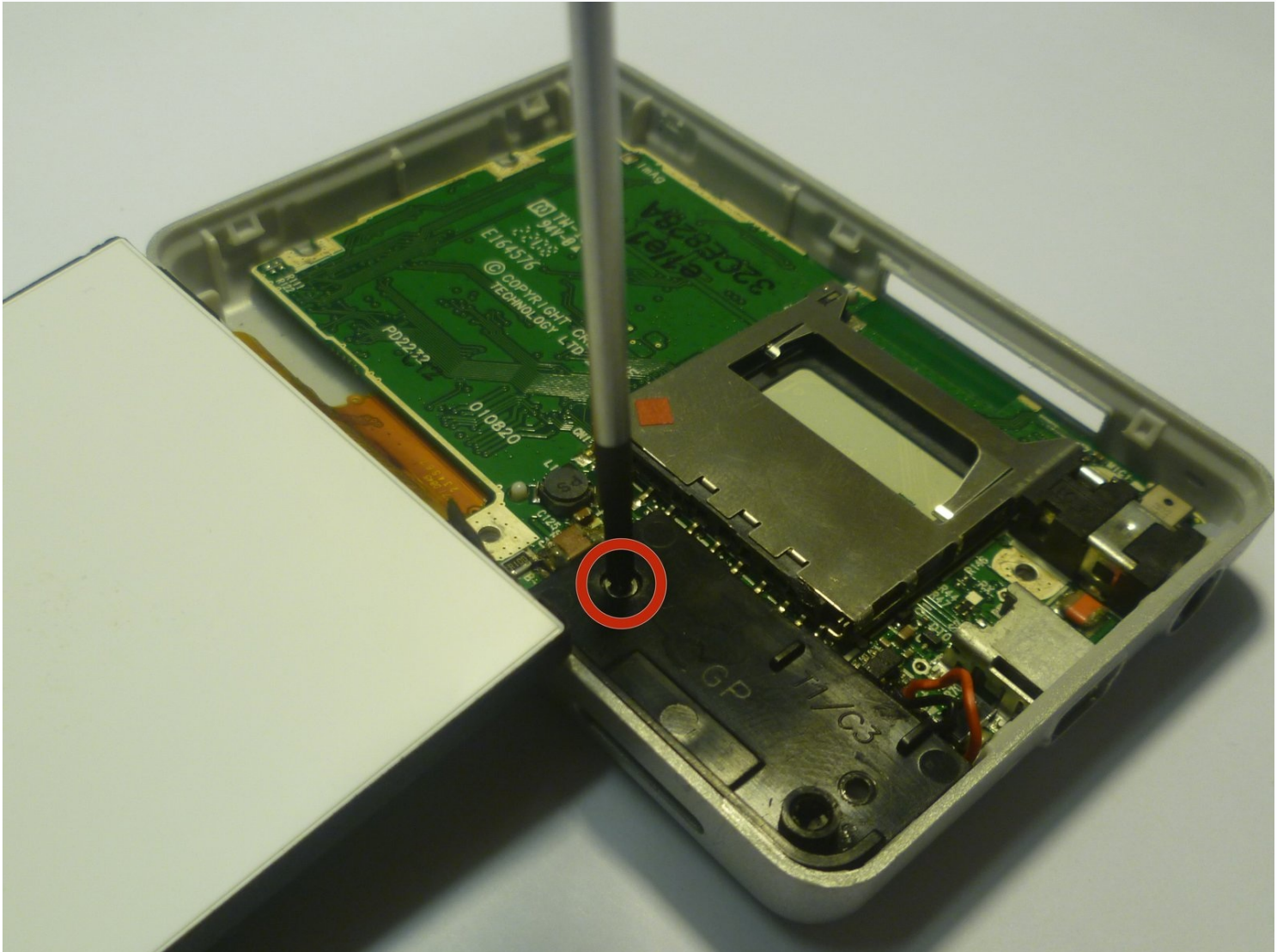




Replacing Creative Zen X-Fi Speaker

The speaker is an output component that plays...

Written By: Westley Courchene



INTRODUCTION

The speaker is an output component that plays sound.

TOOLS:

Phillips #00 Screwdriver (1)

Spudger (1)

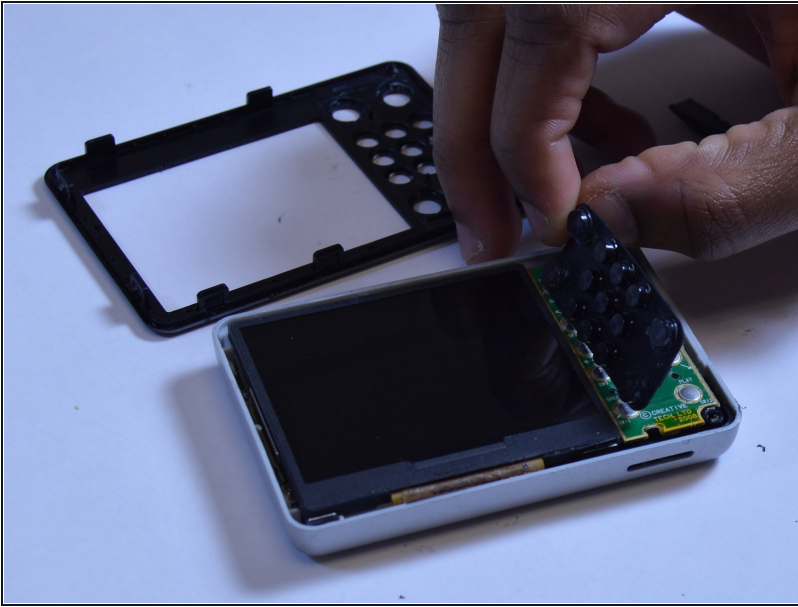
Tweezers (1)

Step 1 — Detaching Front Case



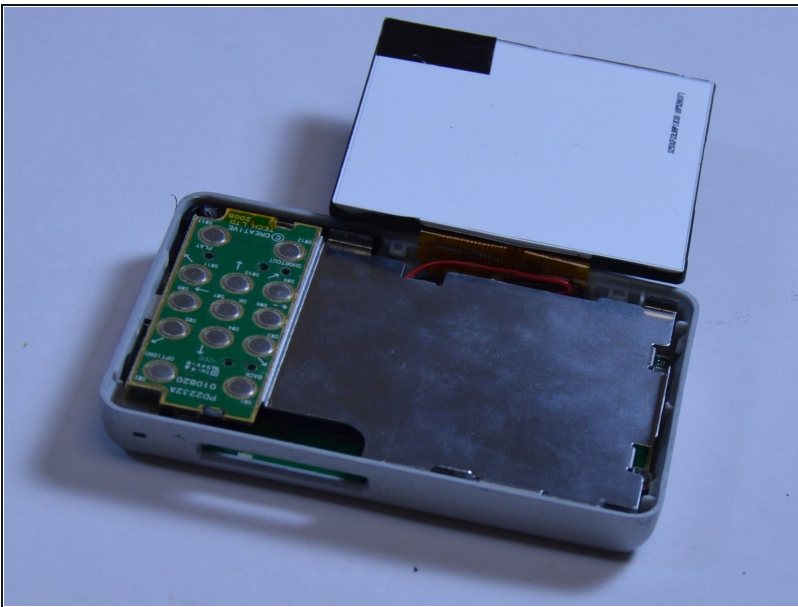
- Using a spudger, wedge the tip between the front and back case to pry them apart.
- ① Be careful to not apply excessive force since there are six fasteners on the screen's side that holds the cases firmly together.

Step 2 — Rubber Button Cover



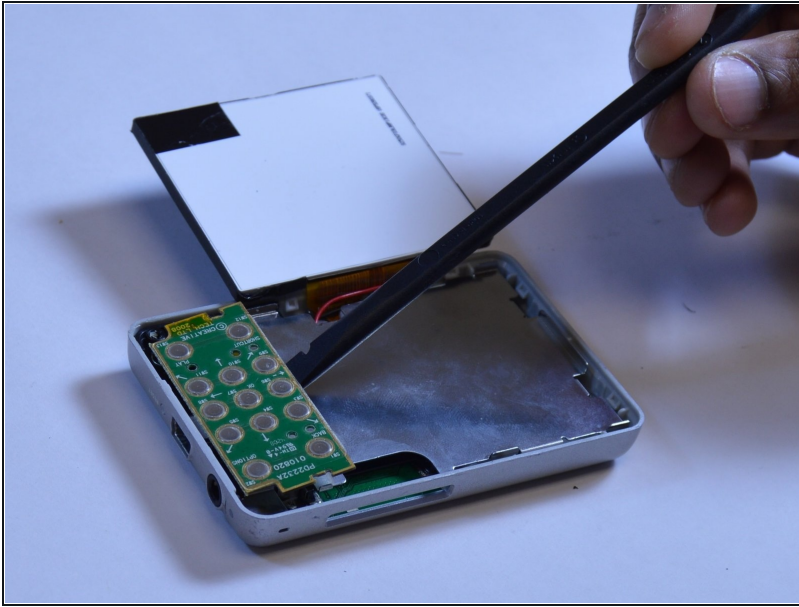
- The black rubber button pad can be removed by simply picking it up.

Step 3 — Button Input Chip Part 1



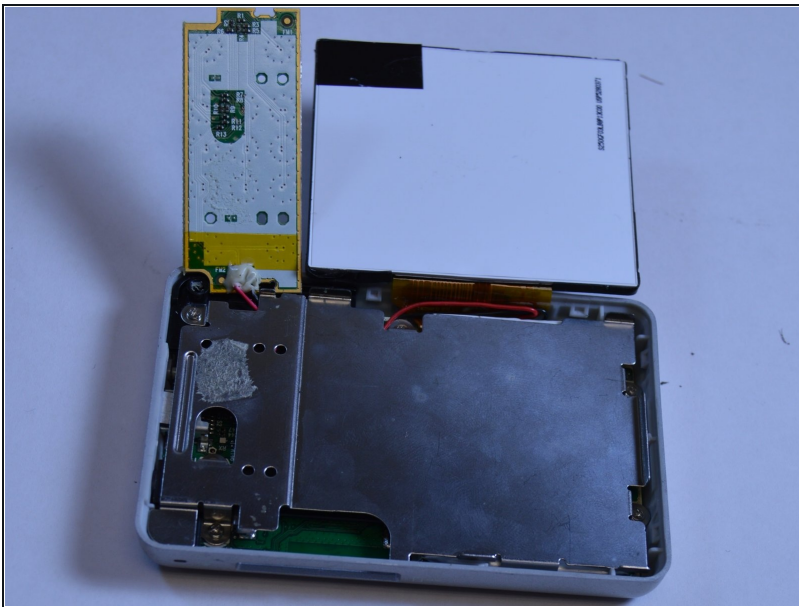
- Flip the LCD screen off the midsection plate to gain access to the space around the input button chip.

Step 4 — Button Input Chip



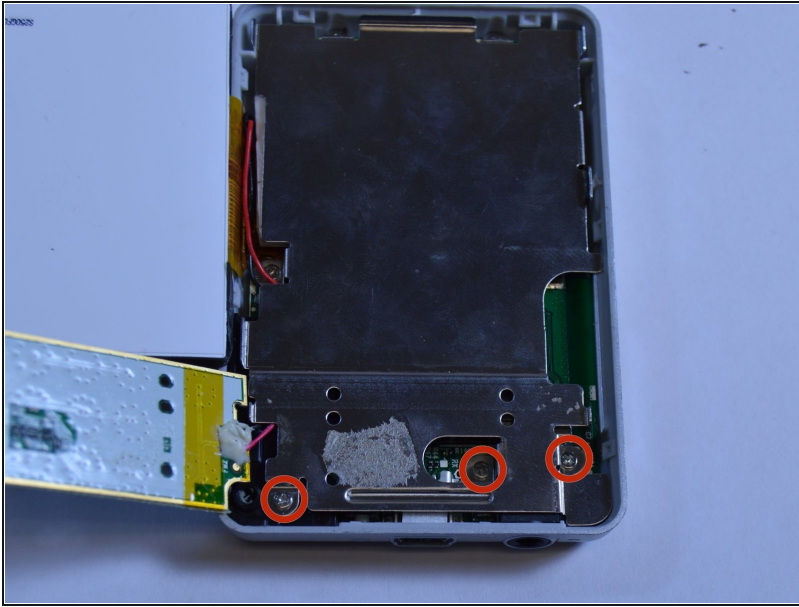
- Using a spudger, pry off the button input chip from the mid-section of the device. To gain best leverage, start at the bottom right corner and level your way up the side of the chip.
- ① Be aware that the button input chip is glued to the mid-section, so some extra force may be required.

Step 5 — Access Midsection Plate



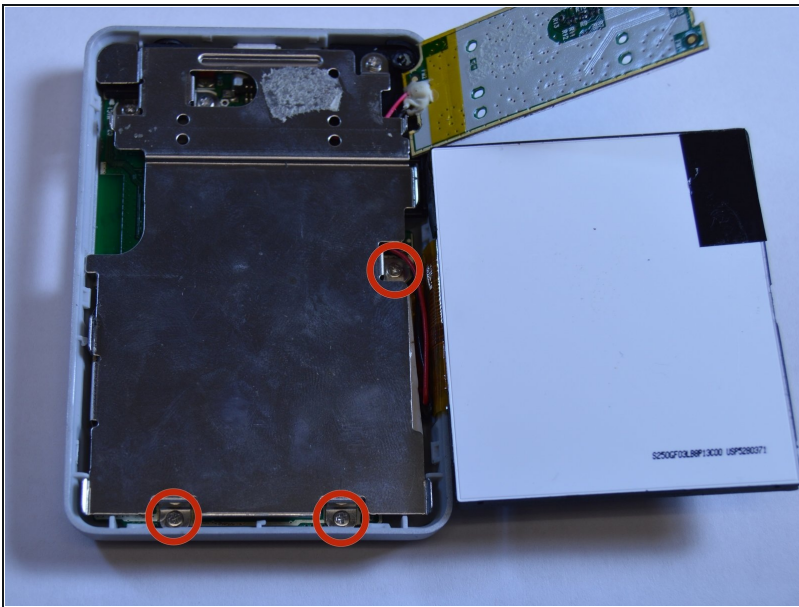
- Lift open the LCD screen and button input chip to access the entire midsection plate.

Step 6 — Unscrew below Button Chip



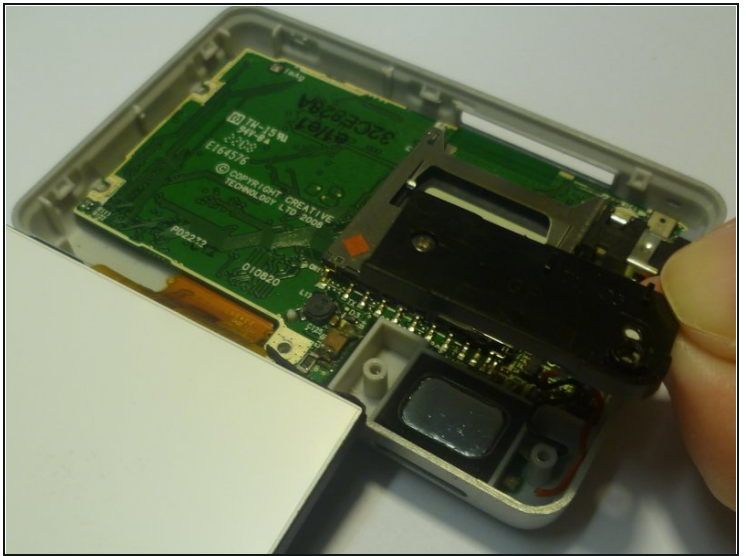
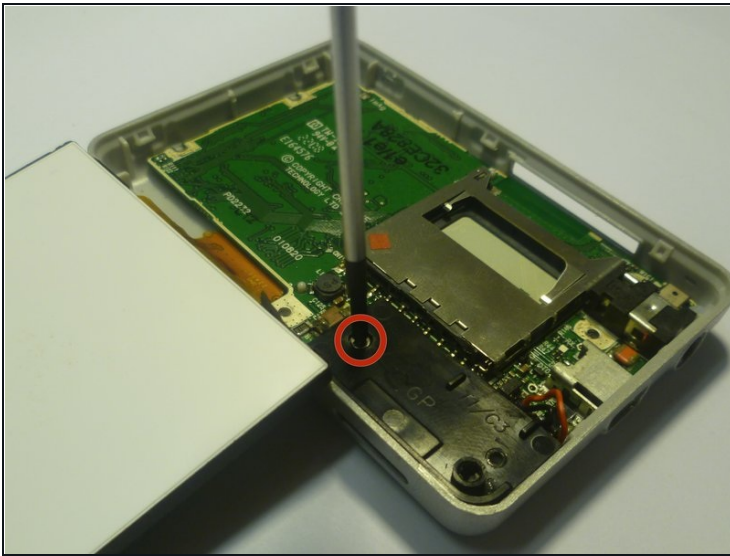
- Use a Phillips Head screwdriver to unscrew the three 3/16 inch screws that were underneath the button input chip.

Step 7 — Unscrew below LCD Screen



- Use a Phillips Head screwdriver to unscrew the three 3/16 inch screws that were underneath the LCD screen.

Step 8 — Unscrew Speaker's Cover



- Use a Phillips Head screwdriver to unscrew the 3/16 inch screw that attaches the speaker's cover to the back case.
- Once unscrewed, pick up the case and put it to the side.

Step 9 — Removing the Speaker



- With the speaker exposed, use a pair of [tweezers](#) to lift the speaker out of the slot.

To reassemble your device, follow these instructions in reverse order.

