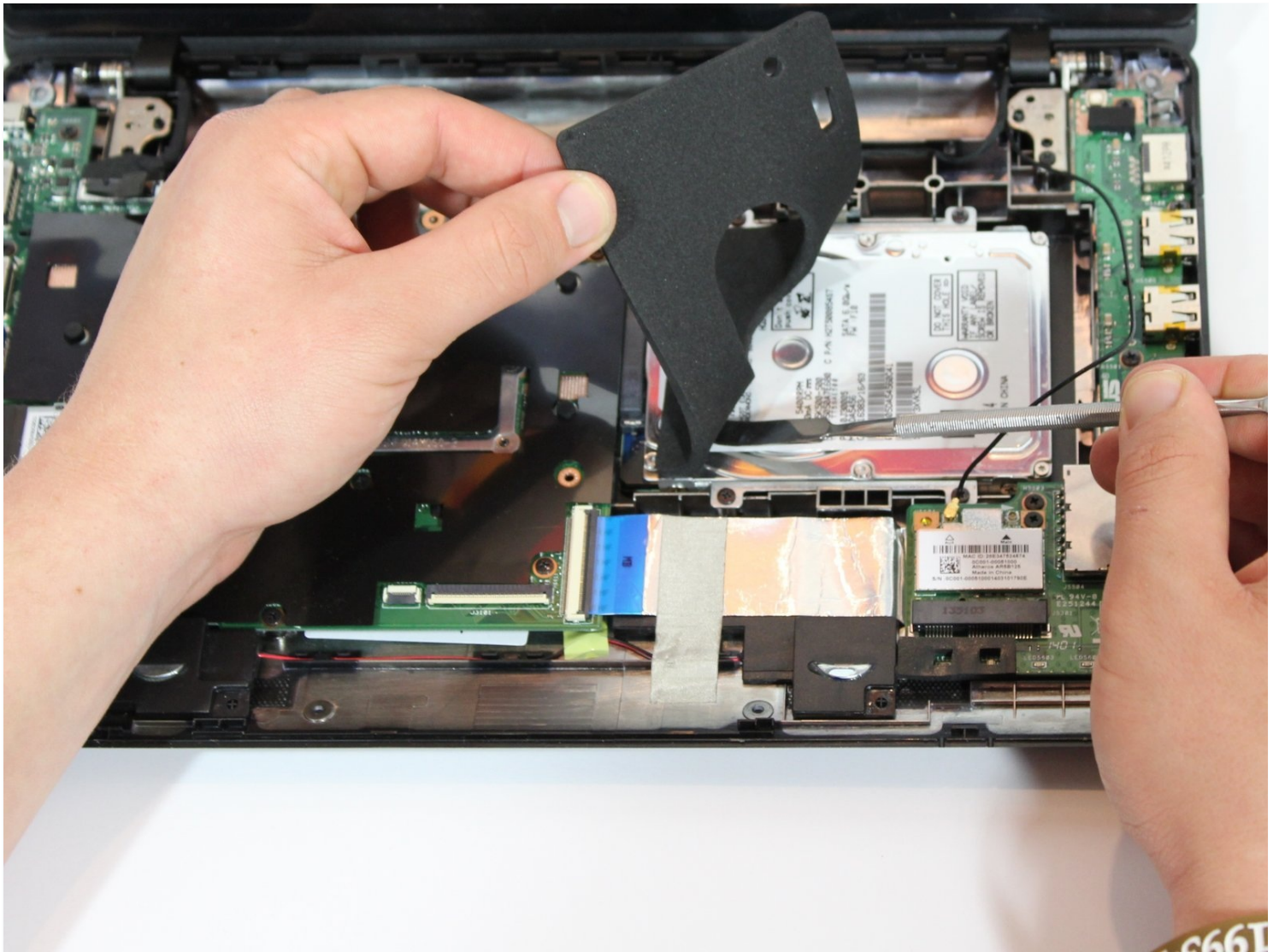




Asus X200MA Hard Drive Replacement

Written By: Vanessa Garcia



TOOLS:

Spudger (1)

Phillips #0 Screwdriver (1)

PARTS:

1 TB SSD (1)

250 GB SSD (1)

Crucial MX500 500 GB SSD (1)

2 TB SSD (1)

Step 1 — Back Panel



- Remove the following six screws:
 - Six 4 mm screws using a Phillips #0 screwdriver.
 - Remove the following one screw:
 - One 14 mm screw using a Phillips #0 screwdriver.
- ☒ ★ The 14mm screw goes in the center.

Step 2



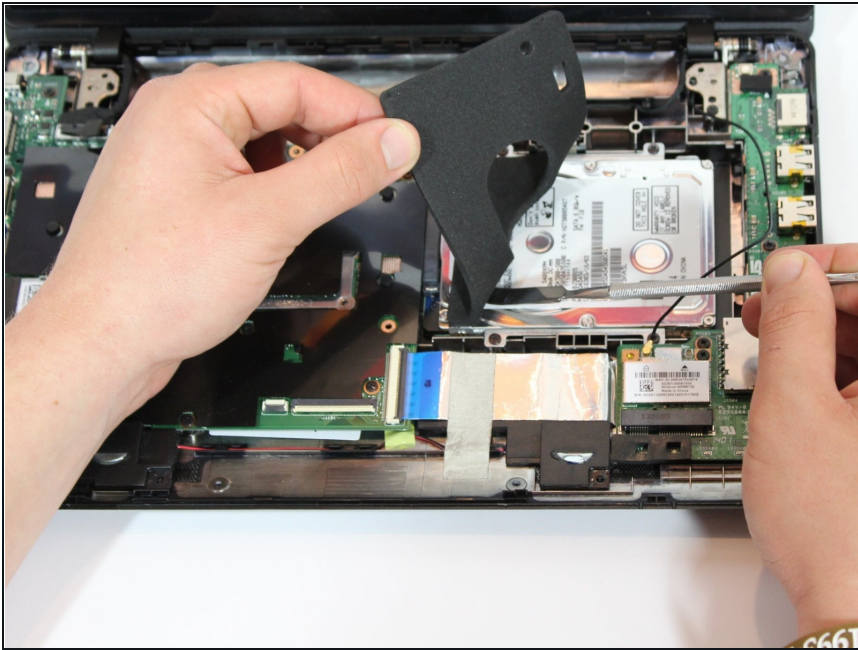
- Take two rubber caps off the back side of the laptop.
- Use a Phillips #0 screwdriver to remove the two 14 mm screws under the rubber caps.

Step 3



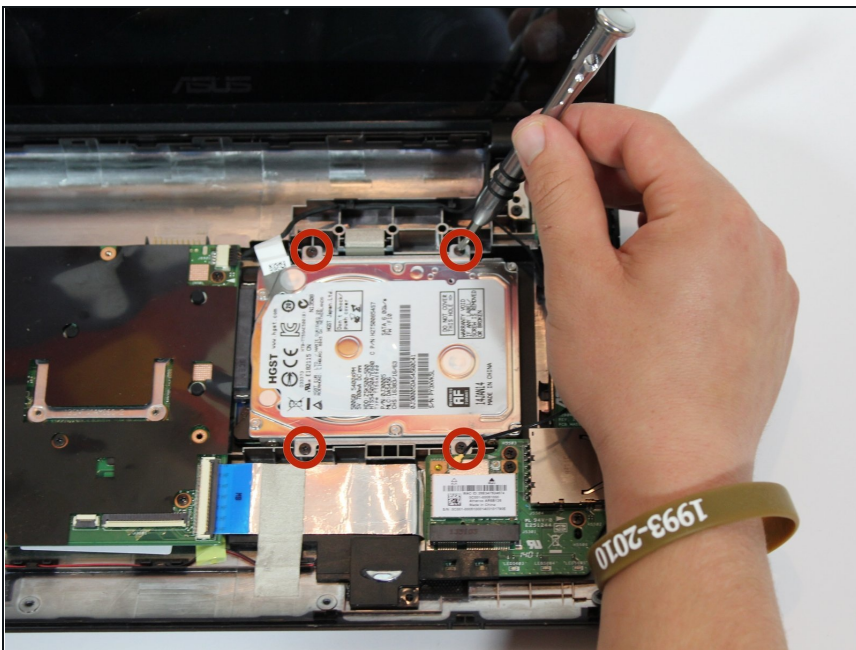
- Use a plastic or metal spudger to separate the keyboard from the back panel and lift the keyboard out of place.

Step 4 — Hard Drive



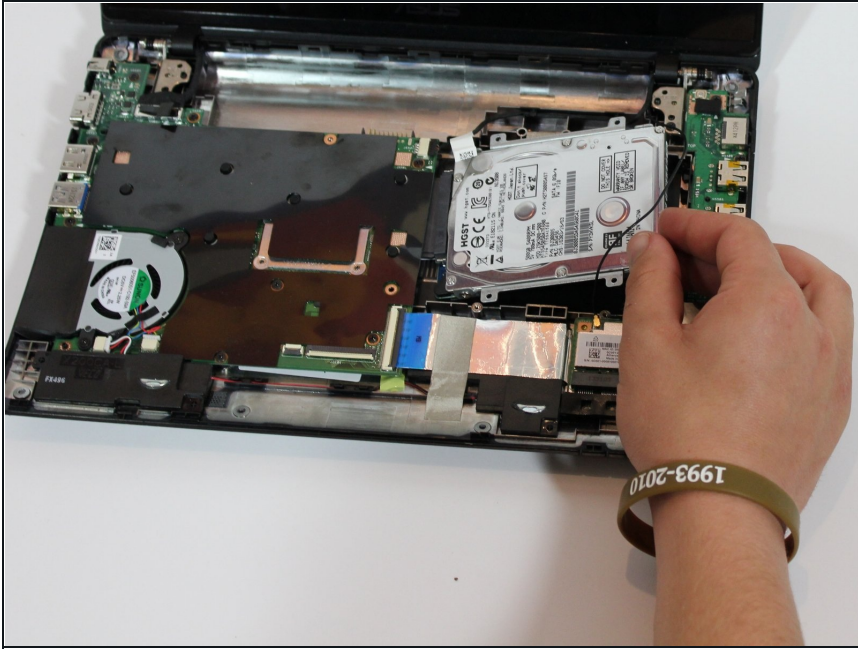
- Remove the black foam and adhesive located on top of the hard drive.

Step 5



- Remove the following four screws:
 - Four 4 mm Phillips #0 using a phillips screwdriver.

Step 6



- Slide out the hard drive

To reassemble your device, follow these instructions in reverse order.