



Sony Xperia Z3 Compact Midframe Replacement

Replace your Sony Xperia Z3 Compact's midframe....

Written By: Sophia



INTRODUCTION

Replace your Sony Xperia Z3 Compact's midframe.

This involves removing the back panel and front screen, separating the main flex, reattaching it, and then reassembling.

TOOLS:

Heat Gun (1)
Suction Handle (1)
iFixit Opening Picks set of 6 (1)
Spudger (1)
Tweezers (1)
Phillips #000 Screwdriver (1)
iFixit Opening Tool (1)

PARTS:

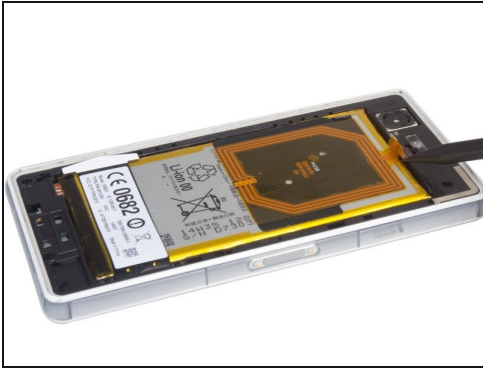
Sony Xperia Z3 Compact Midframe (1)
Sony Xperia Z3 Compact Back Cover
Adhesive Strips (1)

Step 1 — Midframe



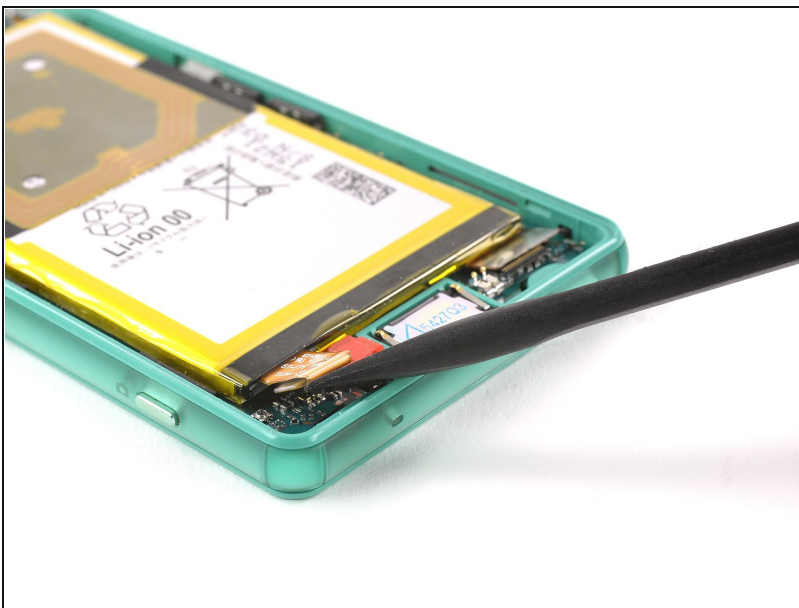
- First, heat up.
- And then place the suction cup and pull to open a gap. Insert into the guitar pick to cut the adhesive sticker under the back cover.
- Finally, remove the back cover.

Step 2



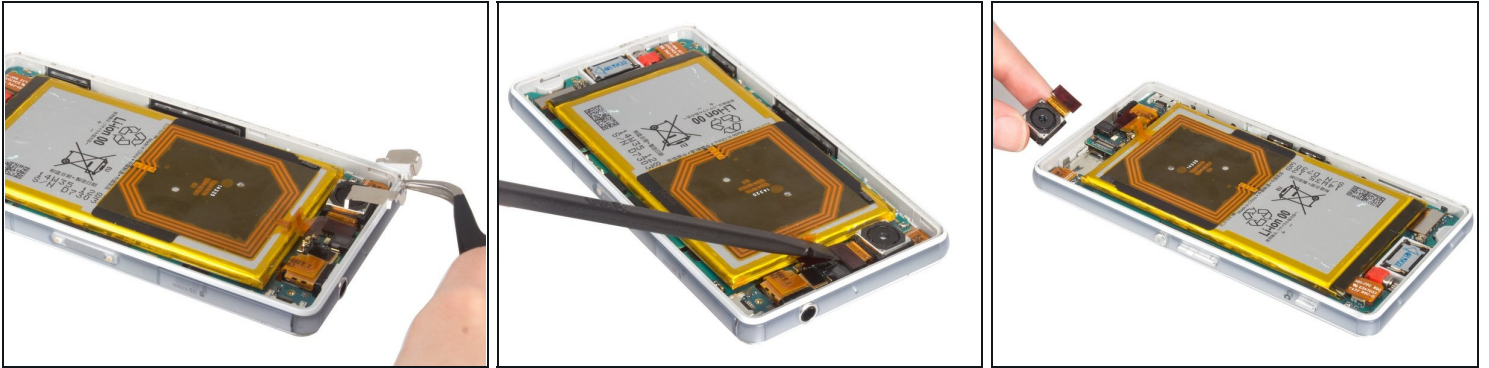
- Disconnect the NFC flex press connector.
- Unscrew the screws holding the black midframe in place.
- Remove back frame.

Step 3



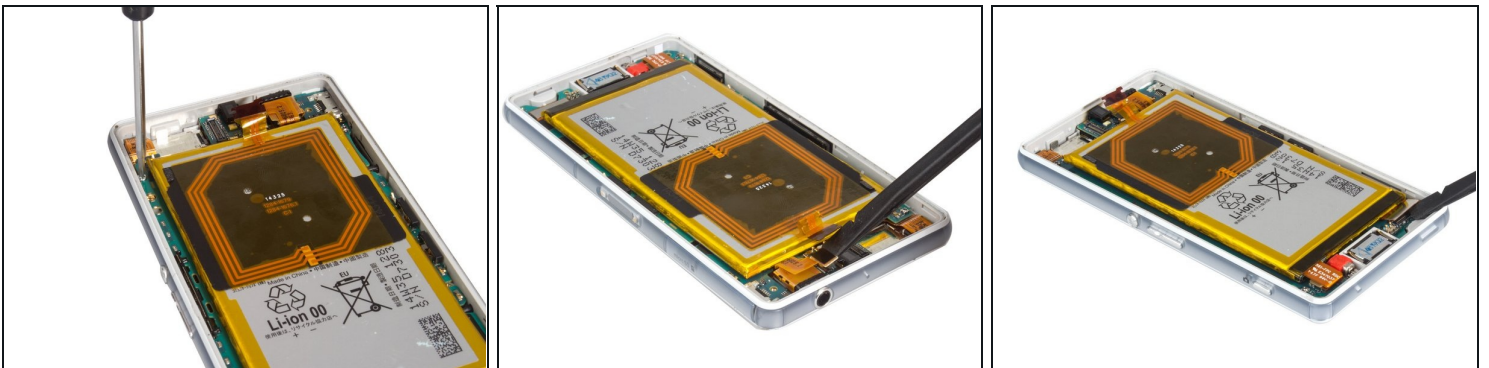
- Disconnect the battery flex cable.

Step 4



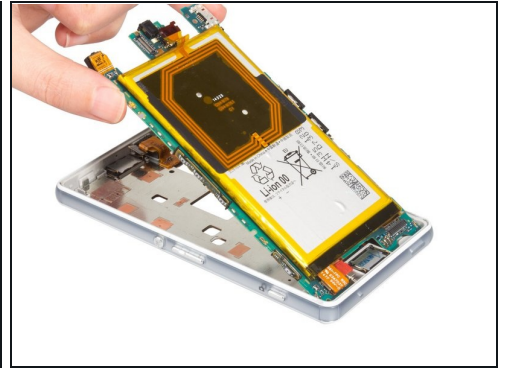
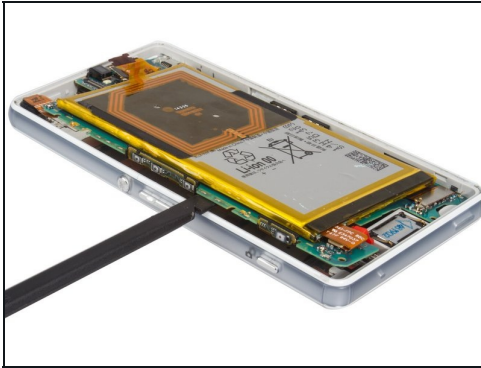
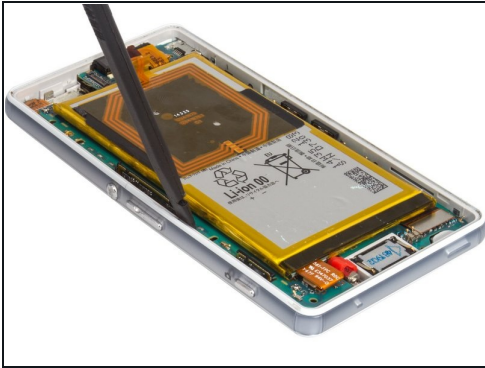
- Remove rear camera bracket.
- Release connector, but take care not to damage the electronic components next to the connector. It is best to access the connector from the bottom (battery side), and not from the side as the picture shows.
- Remove rear camera.

Step 5



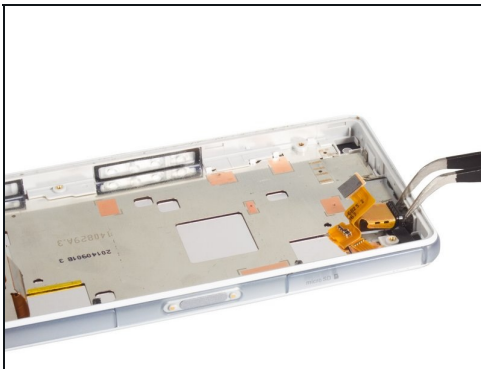
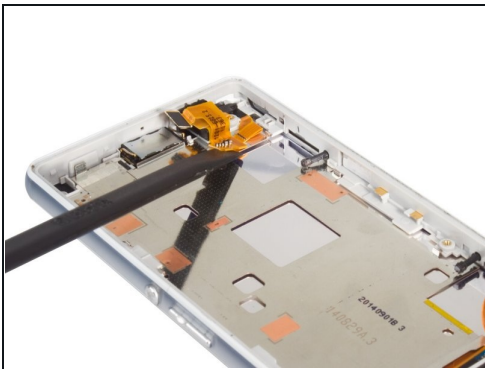
- Release connectors and twist off screw.

Step 6



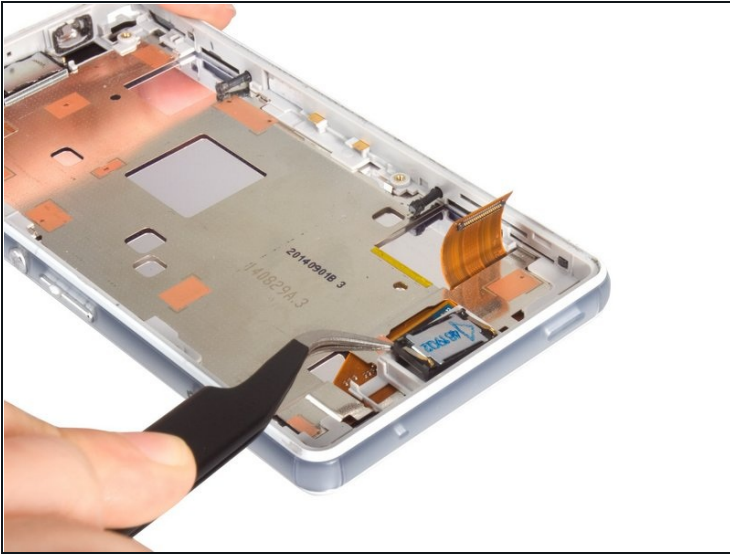
- Remove motherboard.
- Lift the red cover off the vibrating motor, and lift the motor with [tweezers](#). The motor should stay attached to the cabling to the motherboard.

Step 7



- Remove headphone jack.
- Use caution lifting the flex cables that are stuck to the midplate.

Step 8



- Remove loudspeaker.

Step 9



- Separate the LCD screen with earpiece from midframe. See the detail on [Sony Xperia Z3 Compact LCD screen replacement guide](#). Finally, you you can reassemble the phone with new midframe.

To reassemble your device, follow these instructions in reverse order.