



How To Install BMW E46 3 Series Switchback LED Halo Rings

This DIY guide will show you how to install the all new switchback LED angel eye rings for a 1999-2004 BMW E46 3 Series.

Written By: Eric Wu



This document was generated on 2020-11-17 07:33:11 AM (MST).

INTRODUCTION

It's not often that you would see an older series BMW on the road today as you would before, so it's like a classic throwback now. Fortunately, there are still a ton of aftermarket upgrades that are made for previous BMW generations like the switchback LED angel eyes. You can give your BMW that older look, but still have a new world touch. The BMW LED switchback halo rings have an dual white and amber function that's sure to blow your mind.



TOOLS:

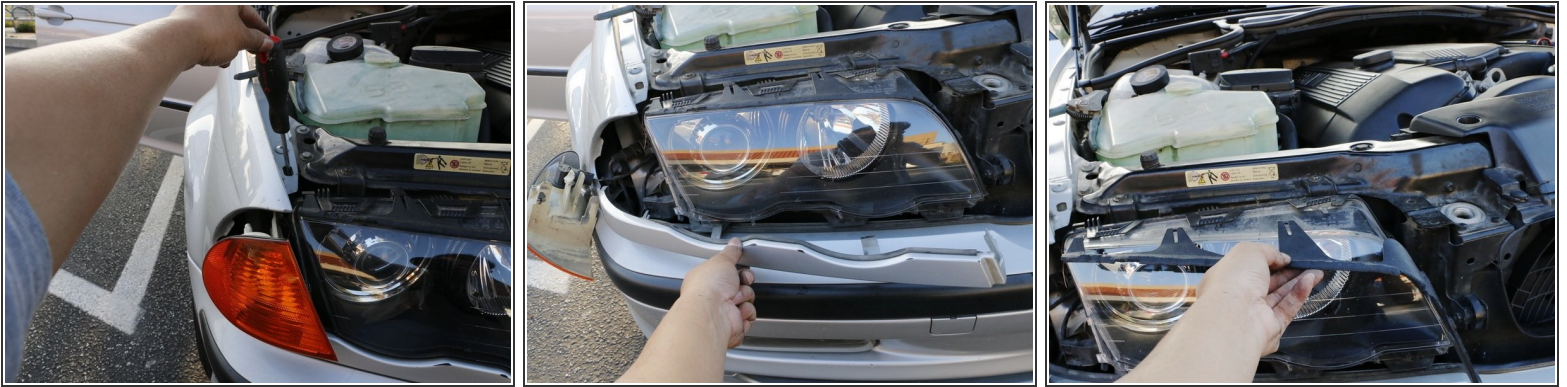
- [Screw Driver](#) (1)
- [Electrical Tape in 6 Assorted Colors](#) (1)
- [Wire Stripper](#) (1)



PARTS:

- [BMW E46 Switchback LED Angel Eyes](#) (1)
- [BMW Switchback LED halo rings](#) (1)

Step 1 — Prepare to open the headlamp.



- Take a long screwdriver and insert it into the hole to remove the turn signal lamp.
- Remove under headlamp plastic trim and the above headlamp rubber trim.

Step 2 — Open up the headlamps.



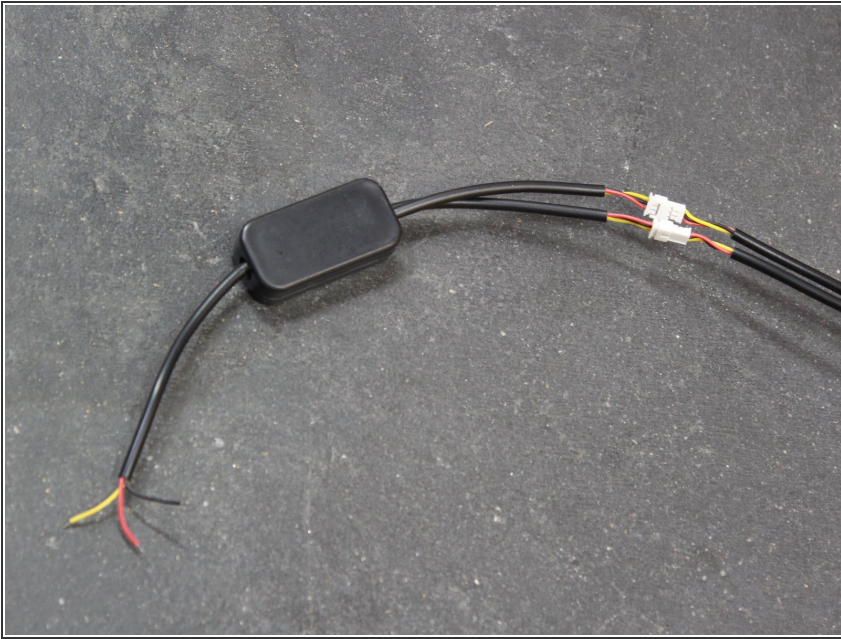
- Remove couple clips holding the headlamp lens and carefully remove the lens.
- Remove the inside headlamp trim.

Step 3 — Install the LED halo rings.



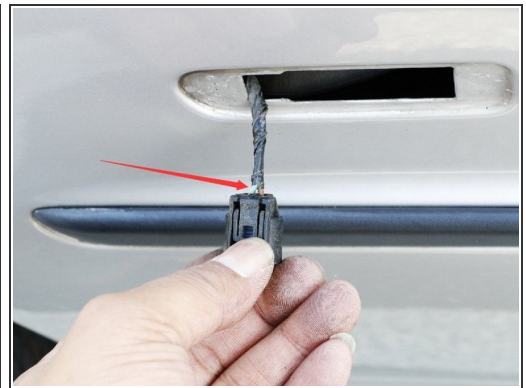
- Clip on the switchback LED angel eye rings. Grab the two black wires through the low beam bulb back openings.
- Put back the black trim. If you install it properly, you will see that the LED halo rings align with the inside trim. You don't have to worry about the rings protruding out because the rings will be pushed back to their appropriate location when you install the lens back.
- Afterwards, please work on the driver side since later you need to connect the wires together.

Step 4 — Install the module box.



- Plug the two wires to the module box. On the other end of the module box.
- Yellow: Turn Signal; Red: White; Black: Ground.
- Special note: You need to extend these wires for the installation.

Step 5 — Connect the wires.



- Tap the black wire to the bolt circled in red.
- On the passenger side, merge the red wire on both driver and passenger side as indicated in the insert. You will need to extend the wires on both sides. Tap the merged red wire to ACC 12V+. There are a few ACC locations; in this case, we chose the blue striped wire.
- On each side, extend the yellow wire from the module box to the left and right side markers. Tap it to the blue/yellow striped wire.

Step 6 — Put everything back.



- Test everything to make sure the BMW switchback LED halo rings work. Put everything back.

This mod will give your BMW a new look with xenon white LED halo rings with additional safety feature with amber signal function.