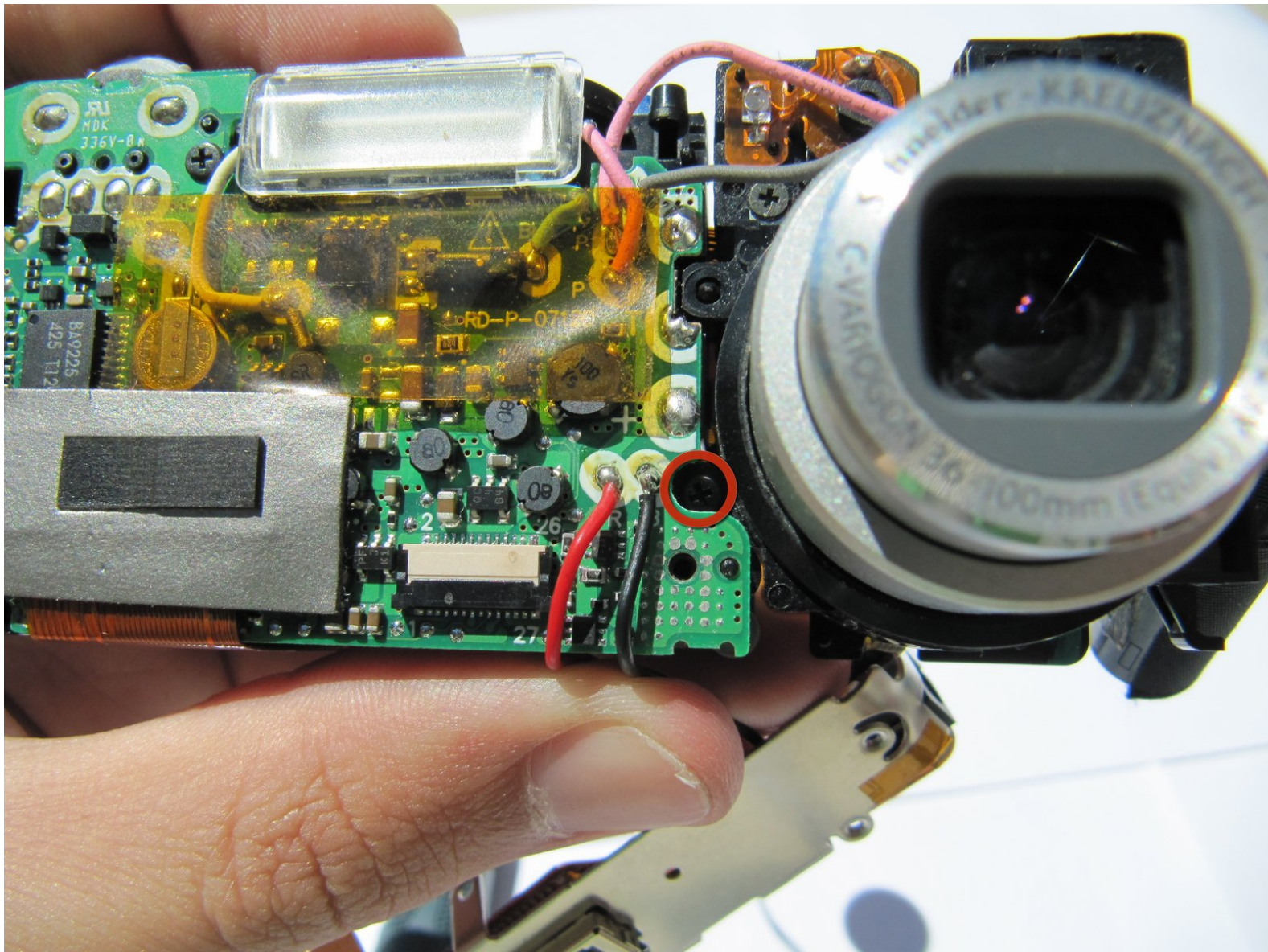




Kodak EasyShare LS743 Lens Replacement

Removing and replacing the lens of the camera.

Written By: Elizabeth Loui



INTRODUCTION

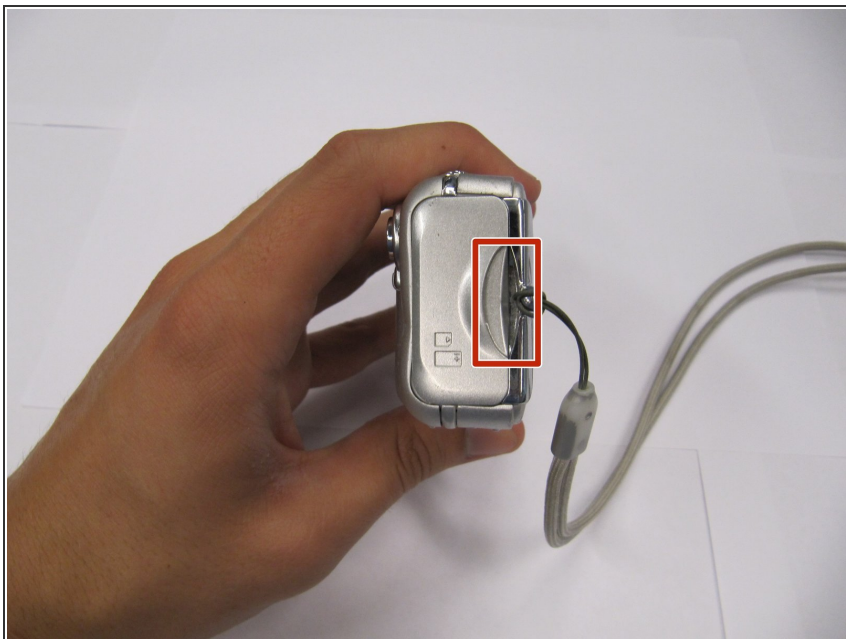
This will teach you how to remove the lens.



TOOLS:

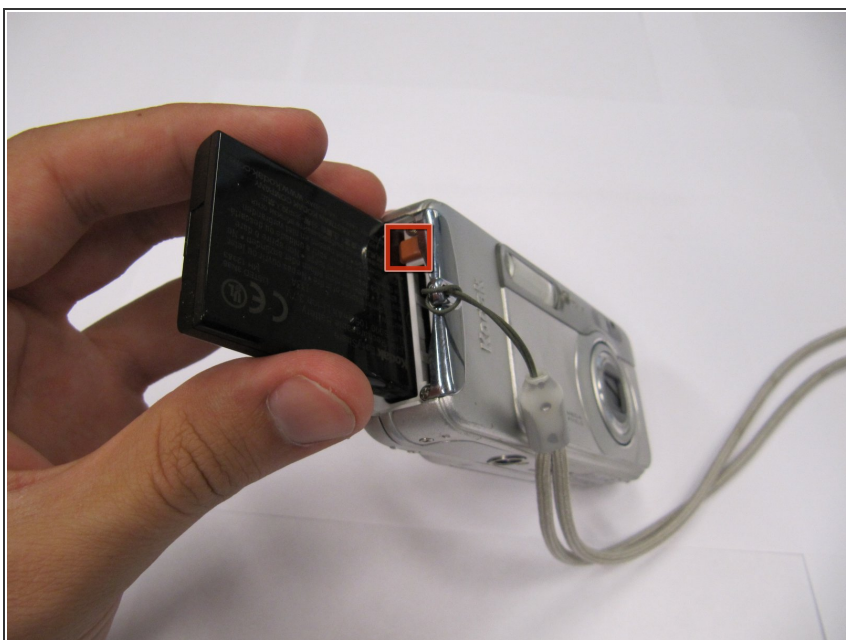
- [Phillips #00 Screwdriver](#) (1)
-

Step 1 — Battery



- Using your fingernail, open the battery cover.

Step 2



- Slide the orange latch sideways to eject the battery.
- Remove the battery from the battery slot.

Step 3 — Kodak EasyShare LS743 Camera Case Disassembly



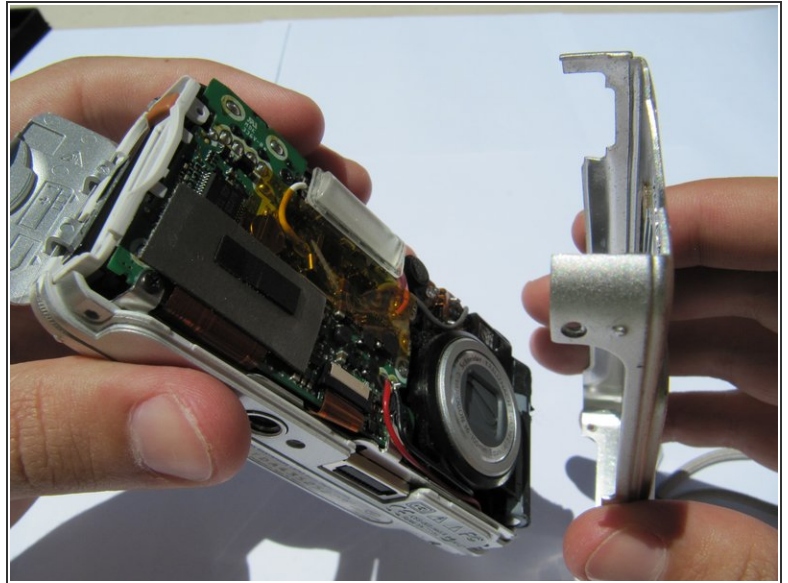
- Using a Phillips #00 screwdriver, remove two 5.39 mm screws next to the battery slot.
- Remove the metal piece holding down the lanyard, then remove the lanyard.

Step 4



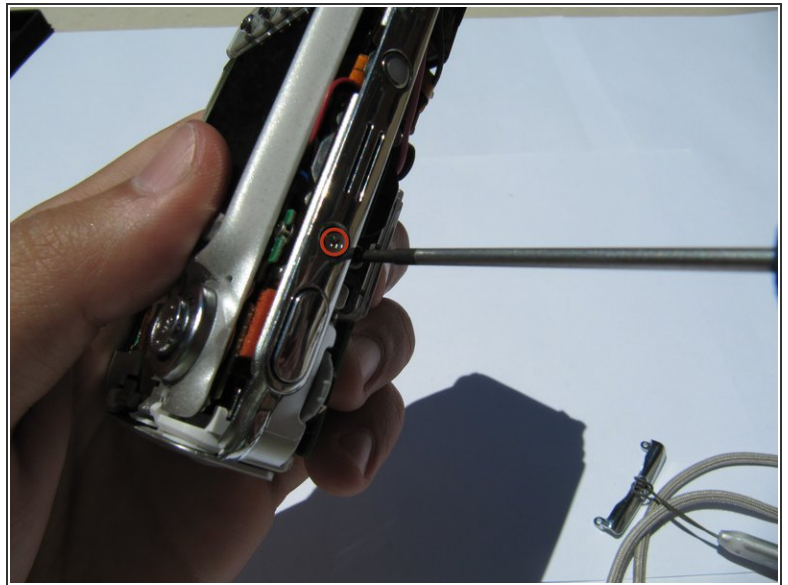
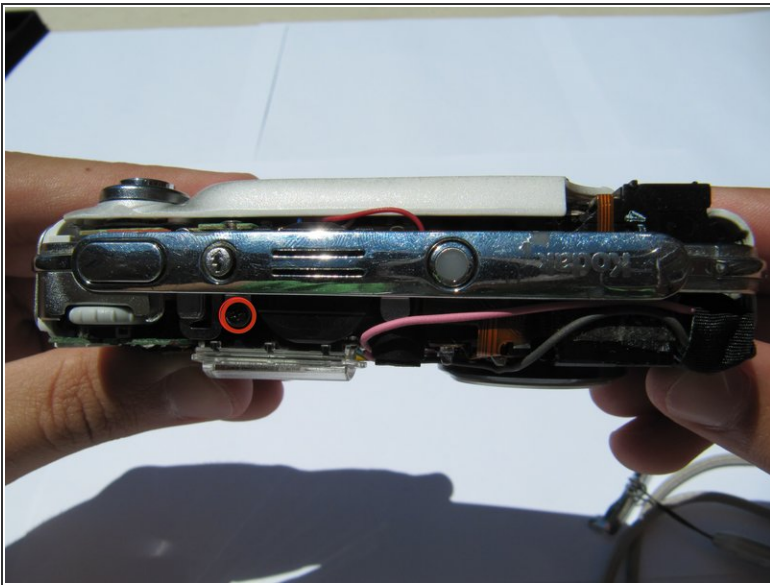
- Using a Phillips #00 screwdriver, remove seven screws located on the outside case of the camera.
 - One 6.25 mm screw is located on the top right corner, right to the "OK" button.
 - Four 4.45 mm screws are on the bottom of the camera.
 - Two 2.95 mm screws are on the left side of the camera, above the USB port.

Step 5



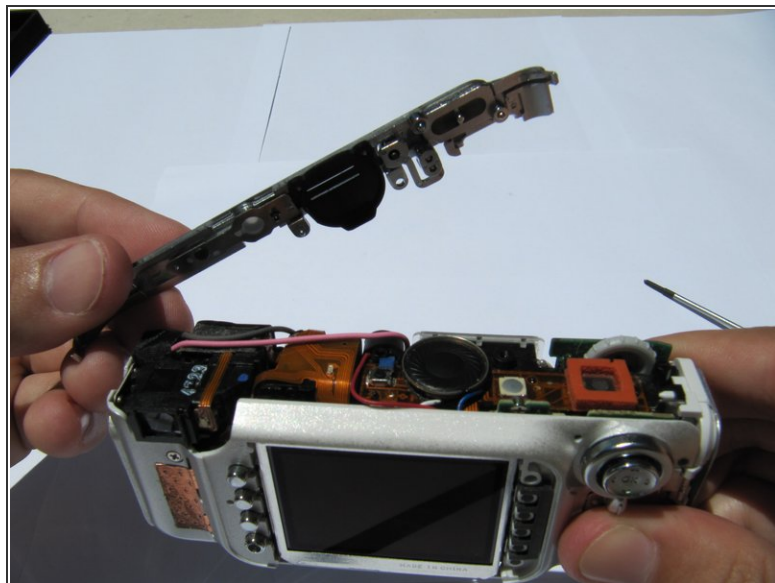
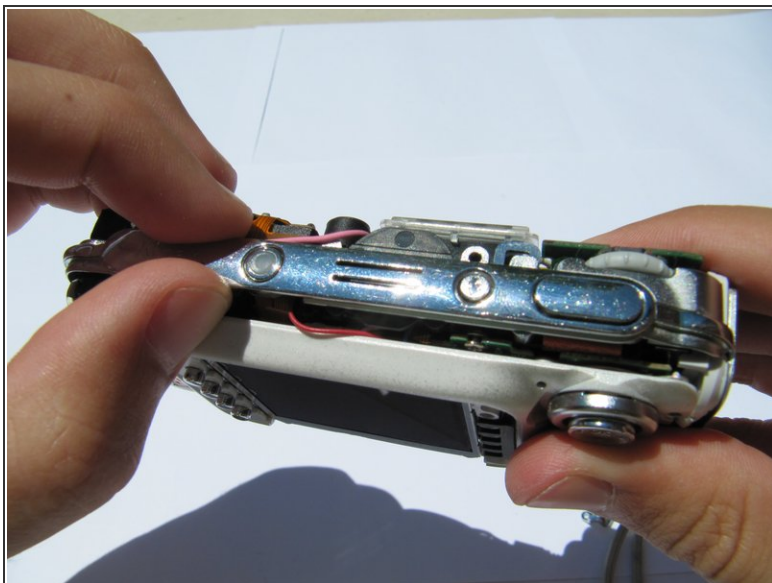
- Carefully remove the rear camera casing.
- Carefully remove the front camera casing.

Step 6 — Top and menu buttons



- Remove the top panel screw (1x 4.37mm).

Step 7



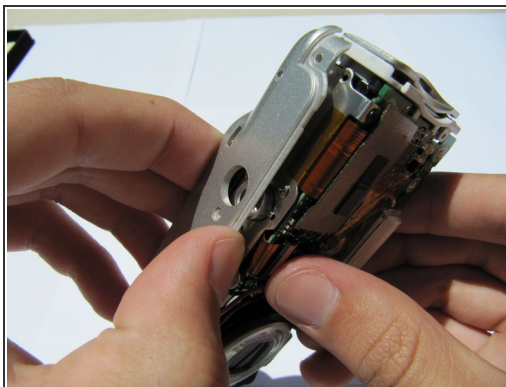
- Remove the top panel.

Step 8



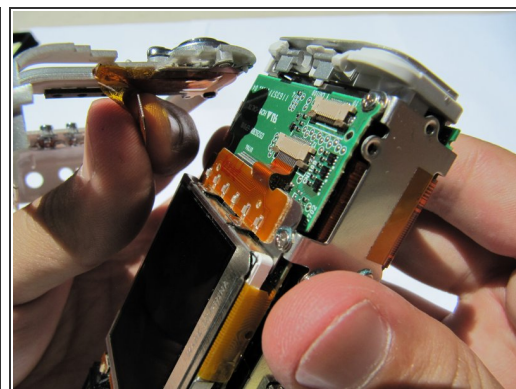
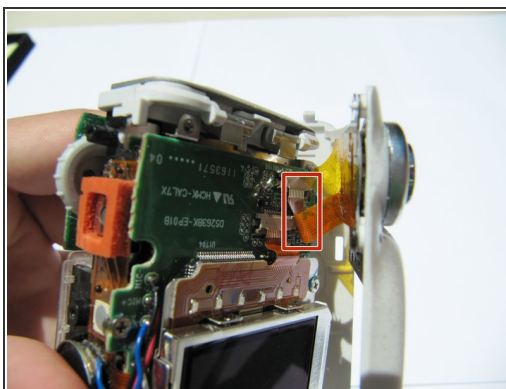
- Remove the back panel screws (1x 3.33mm, and 1x 3.40mm).

Step 9



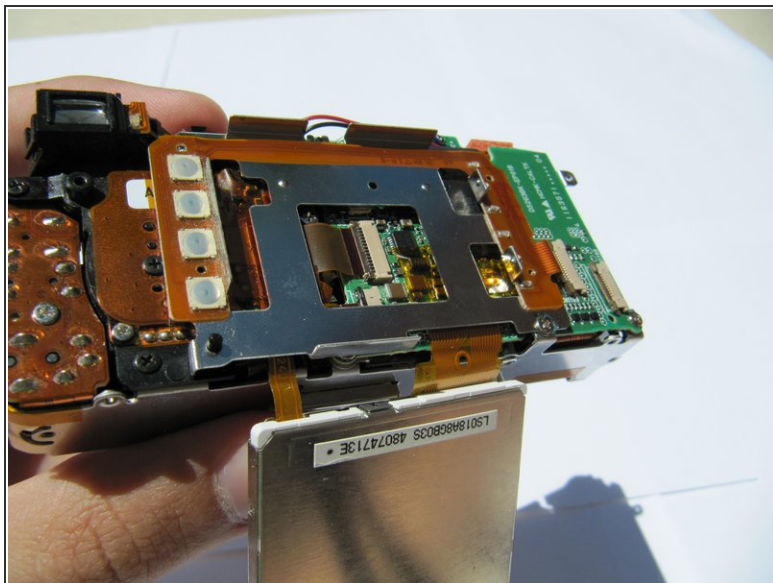
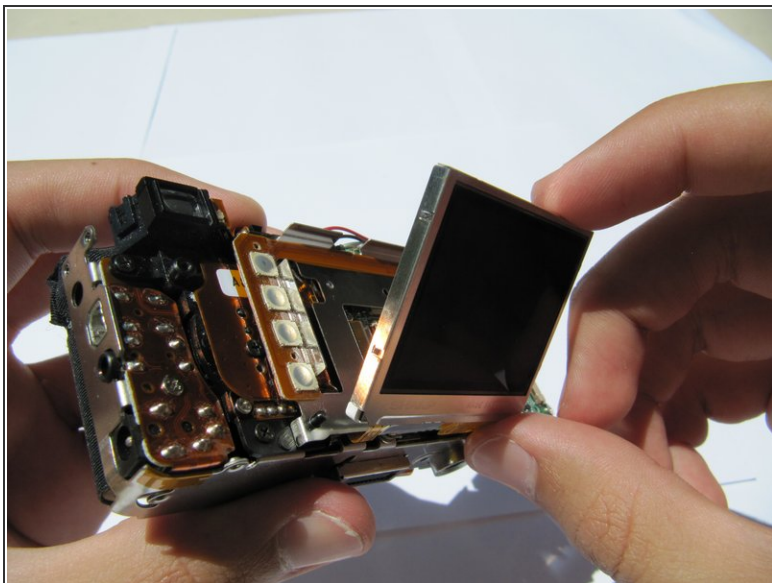
- Separate the inner casing from the tripod mount.

Step 10



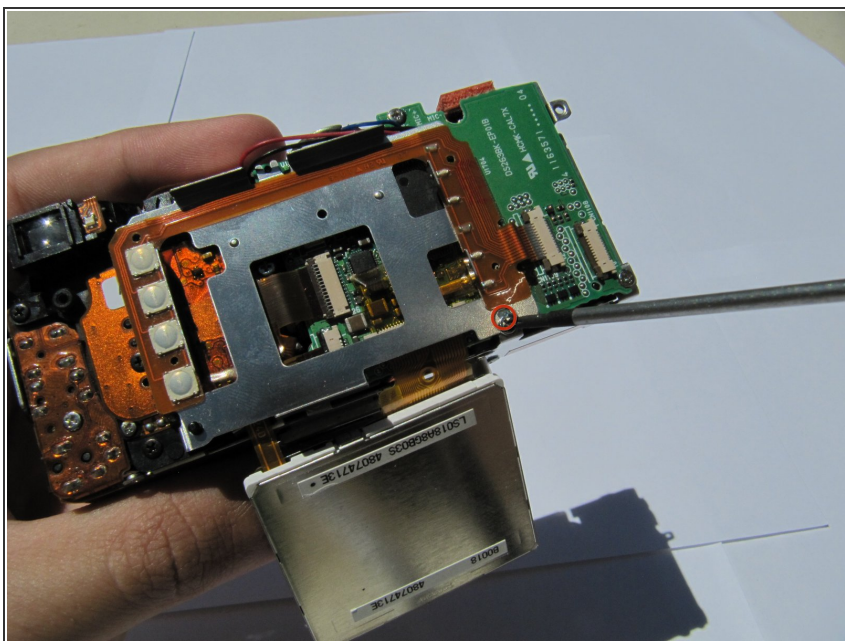
- Gently pull the orange tab out of the circuit board.

Step 11



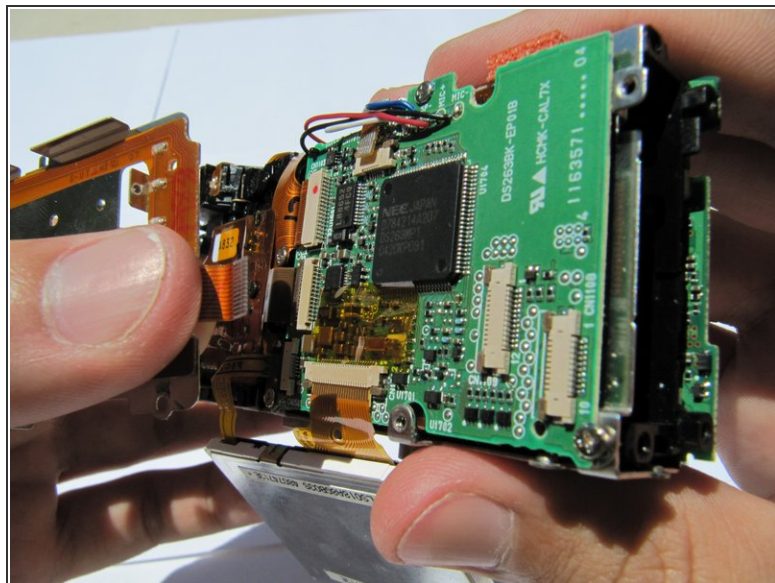
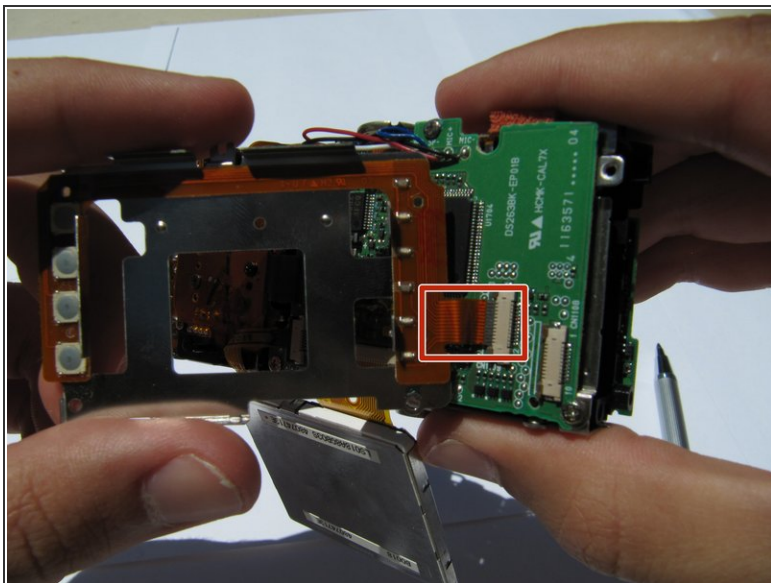
⚠ Carefully separate and flip over the LCD panel to expose the central circuit board.

Step 12



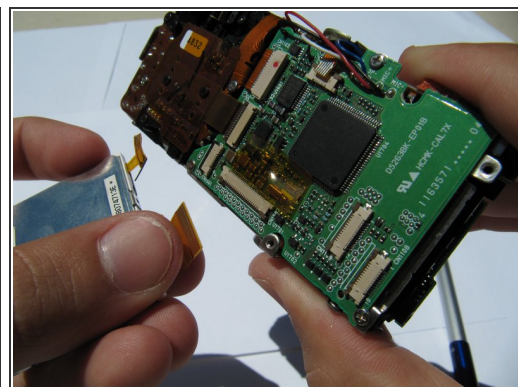
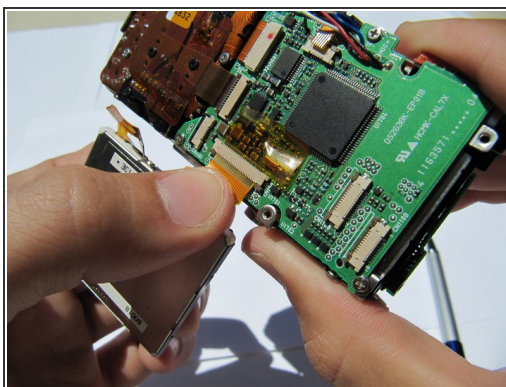
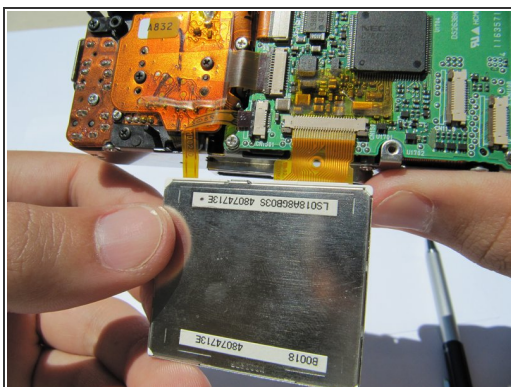
- Remove the (1x 3.33mm) screw from the menu button panel .

Step 13



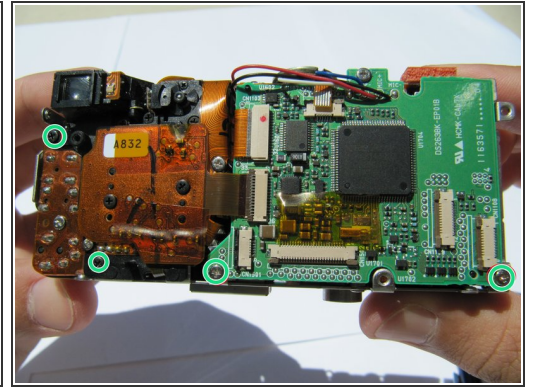
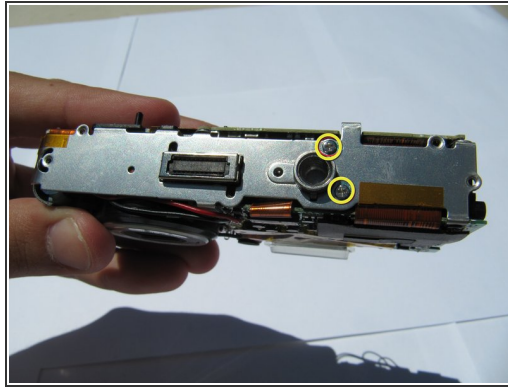
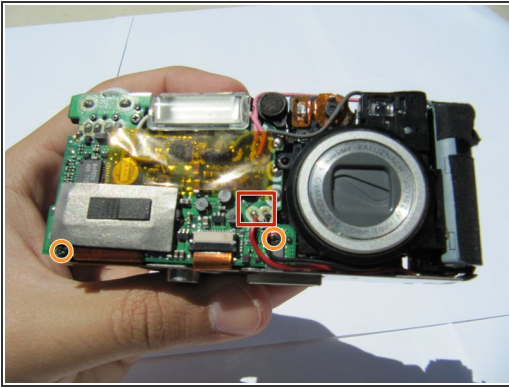
- Pull the second orange tab from the circuit board and remove the buttons.

Step 14 — Removing LCD



- Flip up the LCD screen to reveal the two orange ribbon cables.
- Disconnect the two ribbons cables from their sockets on the motherboard.

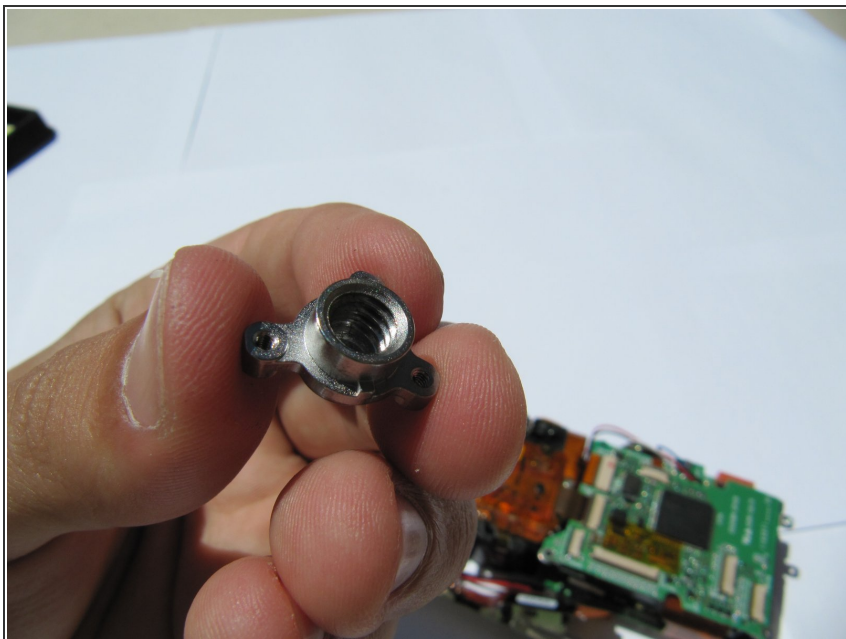
Step 15 — Capacitor



⚠ The capacitor can store electricity even when the camera is off! Do not touch it until you have safely discharged it.

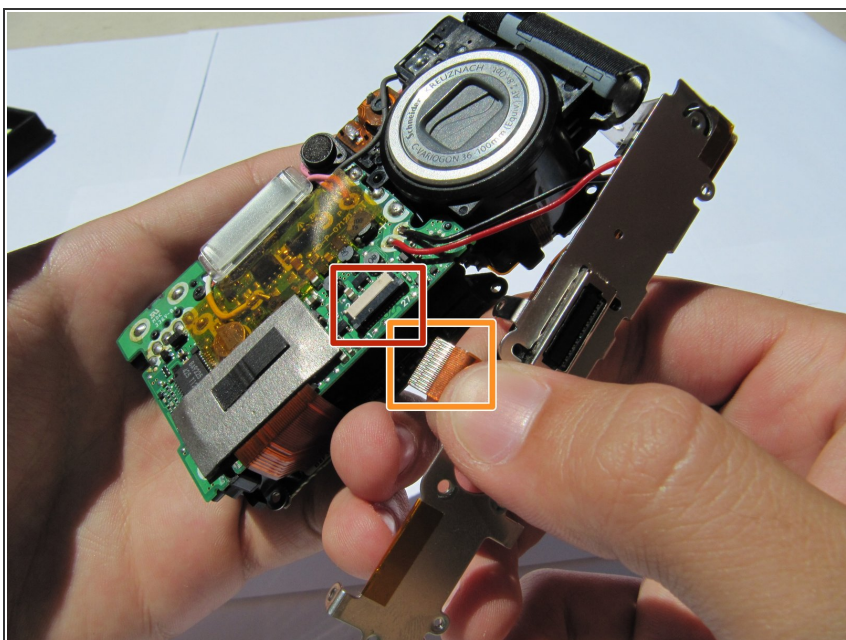
- Connect the two capacitor wires briefly with a pair of metal tweezers to discharge the capacitor. You may see a small spark.
- Remove eight screws using a Phillips #00 screwdriver.
 - Two (4.31 mm) screws are in the front of the camera.
 - Two (3.30 mm) screws are located in the bottom of the camera.
 - ⓘ This causes the tripod mount on the bottom to become loose.
 - Four (3 x 3.33 mm and 1 x 4.34 mm) screws are in the back of the camera.

Step 16



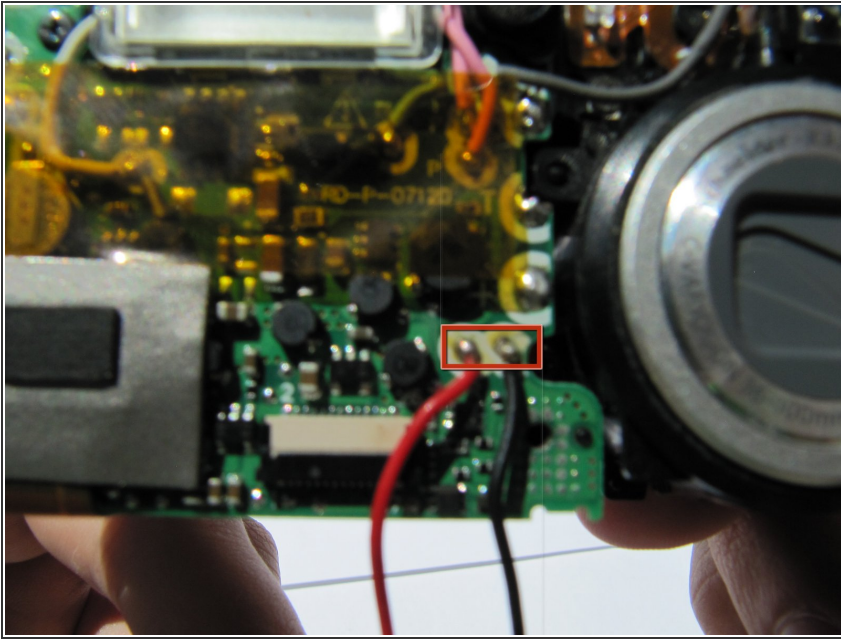
- Remove the tripod mount from the bottom of the camera and set it aside.

Step 17



- Pull the black latch outward slightly to release the orange flex cable.
- Carefully disconnect the orange flex cable.

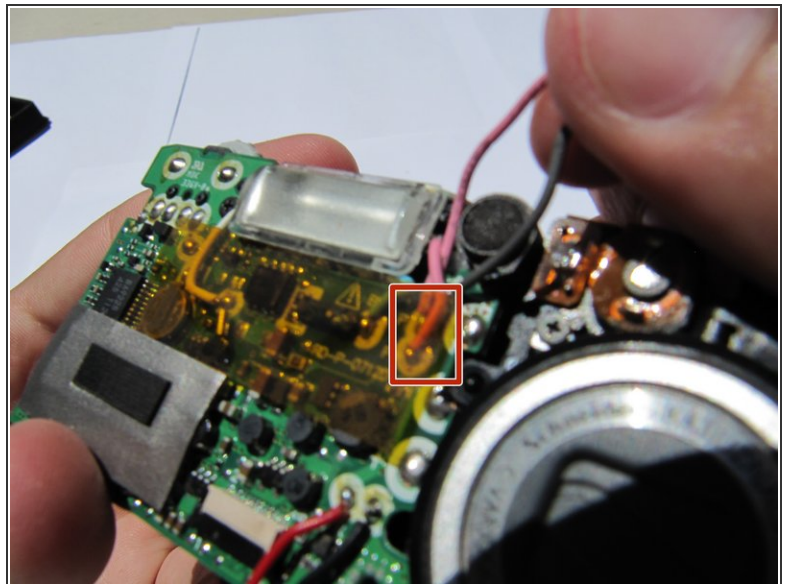
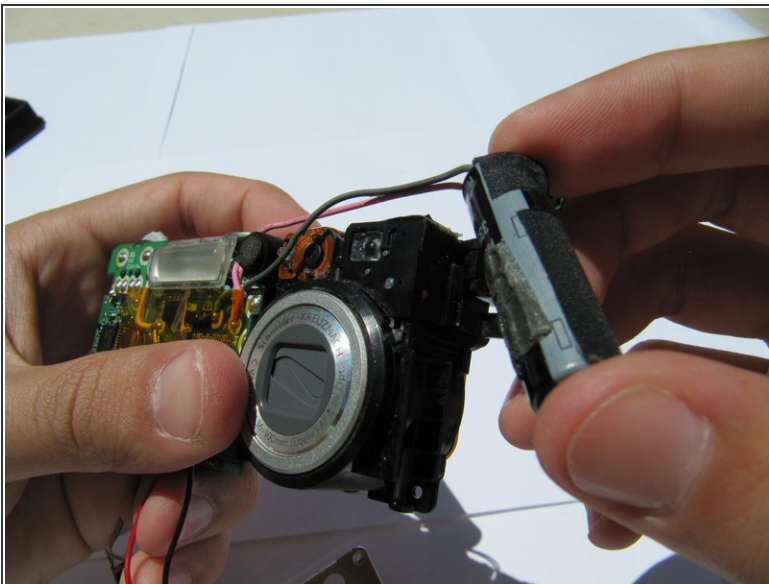
Step 18



⚠ Soldering irons pose a burn risk if handled improperly.

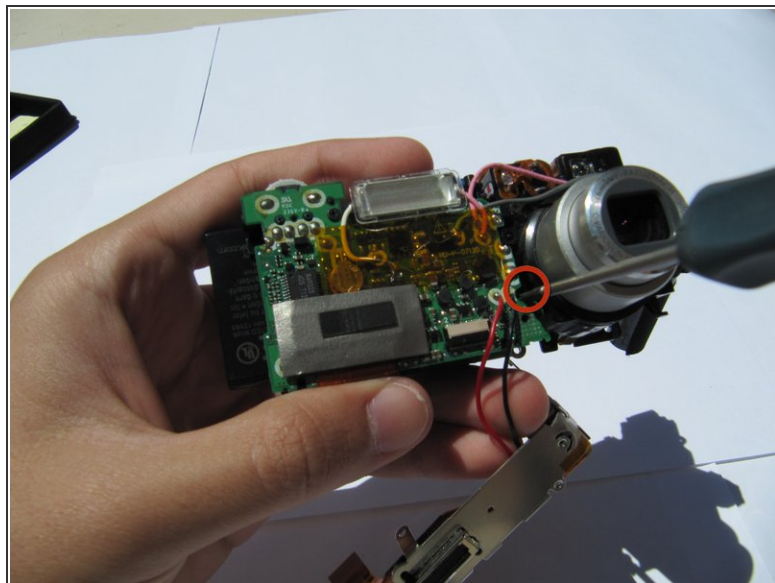
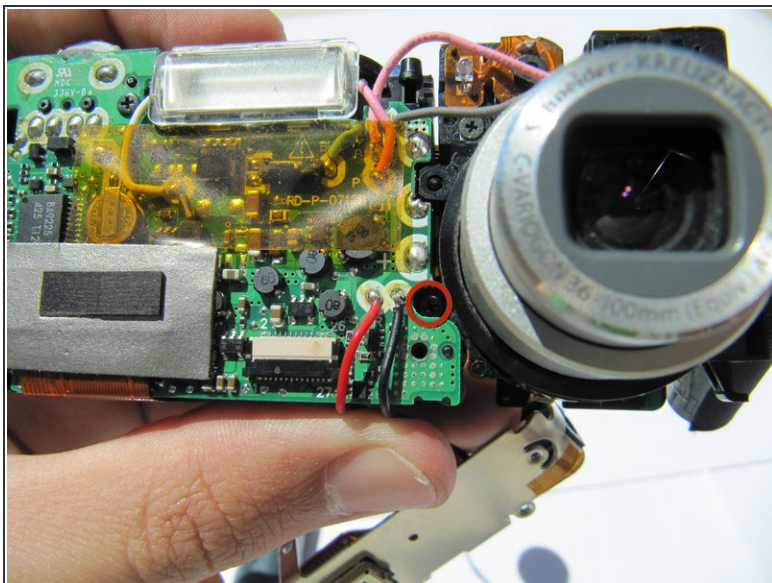
- Desolder the red and black wire and remove them.

Step 19



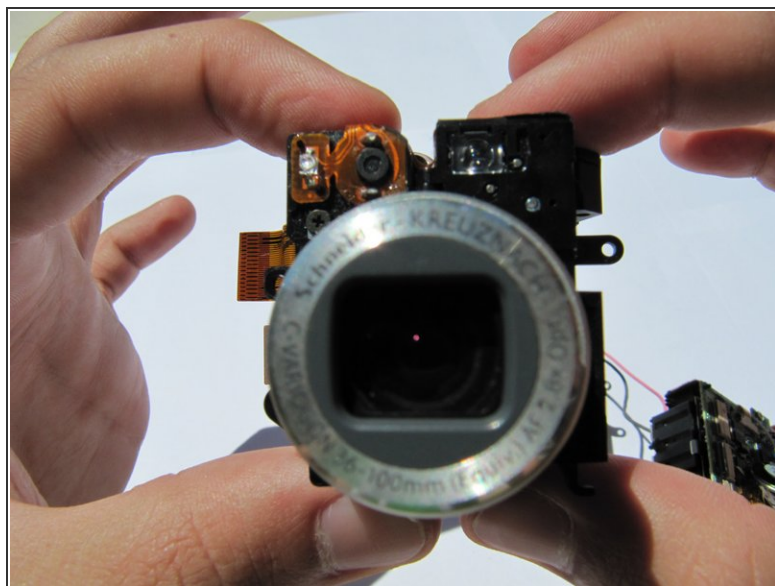
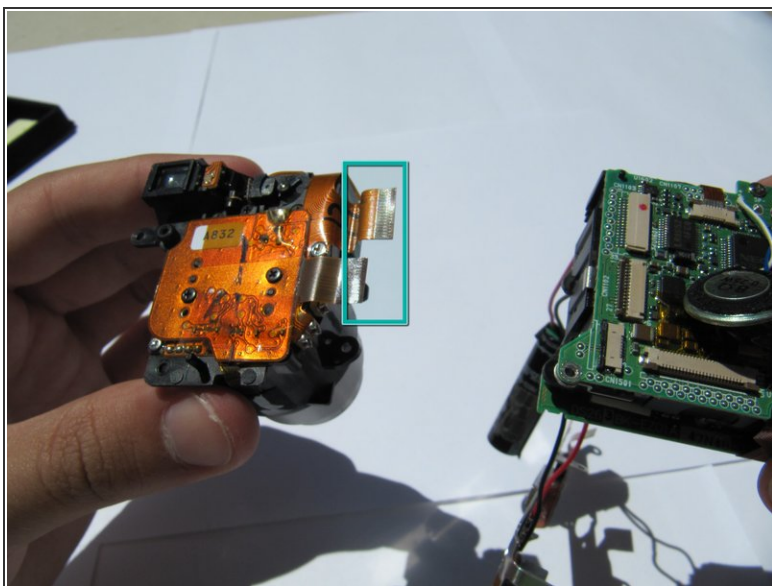
- Hold the camera firmly and gently remove the capacitor (attached by adhesive) by wiggling it loose.
- Desolder the pink and black wire and remove both of them.

Step 20 — Lens



- Remove the (1x4.27) screw from the front of the camera.

Step 21



- Remove the orange tabs from the back of the camera to remove the lens.

To reassemble your device, follow these instructions in reverse order.