



IBM Travelstar DJSA-220 2.5" Hard Drive Teardown

In this teardown, i will disassemble a dead IBM...

Written By: joelc



INTRODUCTION

In this teardown, i will disassemble a dead IBM Travelstar DJSA-220 20 GB hard drive which was in a PowerBook G3 Firewire.



TOOLS:

- [T4 Torx Screwdriver](#) (1)
- [T6 Torx Screwdriver](#) (1)
- [TR8 Torx Security Screwdriver](#) (1)



PARTS:

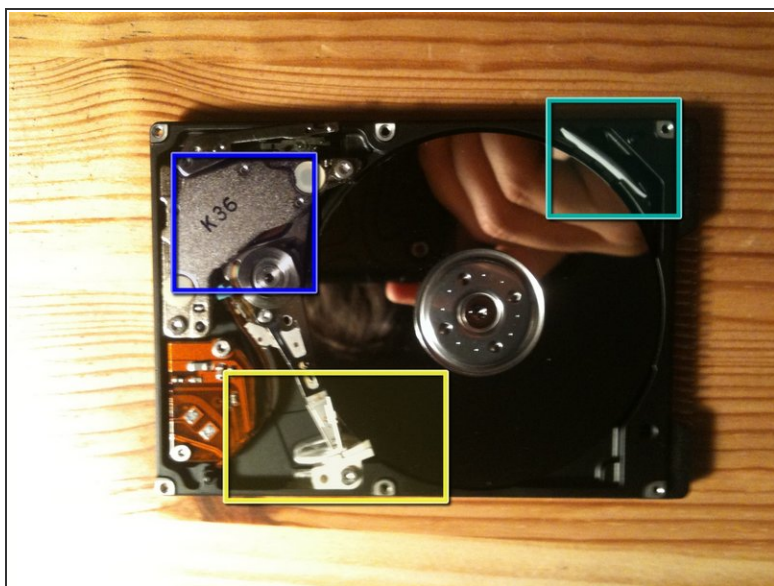
- [20 GB 9.5mm ATA Hard Drive](#) (1)

Step 1 — IBM Travelstar DJSA-220 2.5" Hard Drive Teardown



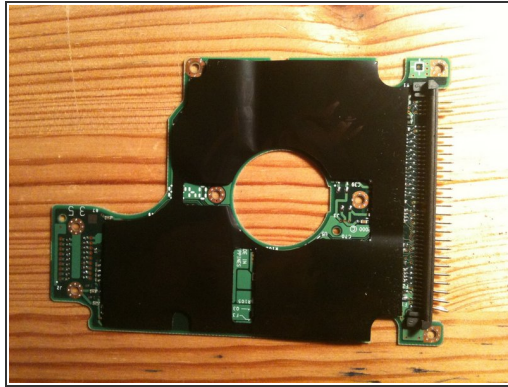
- My Victim: a dead IBM Deathstar DJSA-220
 - 20.00GB ATA/IDE
 - 5V 500mA
 - 4200RPM
 - Original Apple OEM!
- Let's remove the 7 T6 screws!

Step 2 — The Opened Drive



- The disc surface is mirror-like. You can even see my iPhone 3GS!
- Parts Of The Device
 - Heads.
 - Head Motor
 - A little bag that absorbs humidity.

Step 3 — Taking off the Logic Board



- Turn the disc over and remove the 7 T4 screws.
- Then comes the logic board.
- ❗ The black tape is only foam. It doesn't stick.
- Contacts for data transfer and head control
- Contacts for motor power
- 📁 If my scanner wants to work again, i'll post a high res scan of the board.

Step 4 — Looking at the Drive



- You now see the back, without the logic board.
- Heads connector, transfers head-moves commands and data to store and read
- Motor connector, brings power to move the discs at 4200RPM

Step 5 — Let's attack the inside!



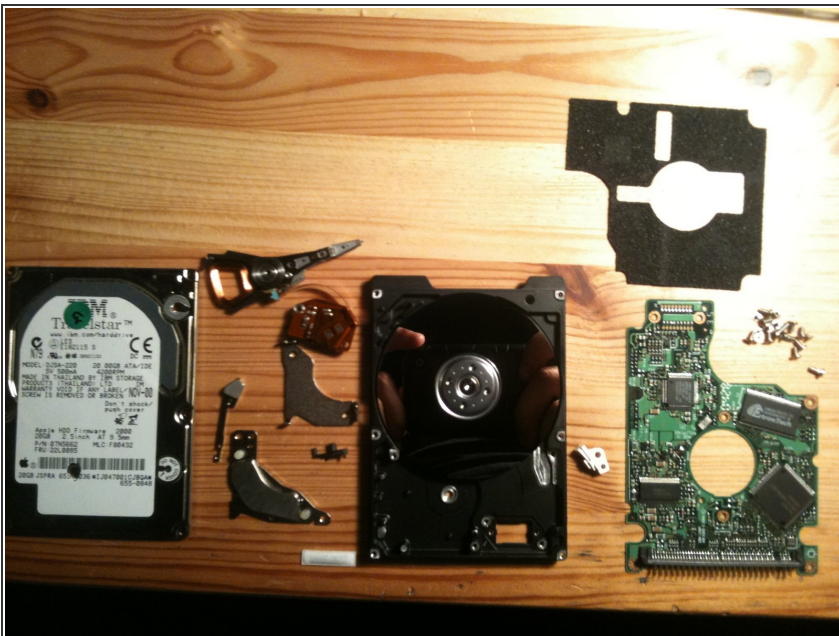
- Let's attack the inside!
- remove the two T6 screws.
- This piece is a powerful magnet!
- This is a PCB with a ribbon cable stuck on it
- Remove the two T6 screws.
- The screw is on the back, T6 too.
- I was unable to remove that T8 screw that holds the platters. They keep turning with my screwdriver and i couldn't block it strong enough.

Step 6 — The Head



- The head with its connector.

Step 7 — All Done



- Done!
- The Screws:
 - 7 T4 screws.
 - 13 T6 screws.
 - 1 T8 screw
- There are more screws in this hard disc than in a new MacBook!
- ☒ Thank you for reading my first teardown :-)

To reassemble your device, follow these instructions in reverse order.