



Samsung Galaxy SIII Mini VE Power Button Replacement

This guide will show you the steps necessary to replace your power button on your Samsung Galaxy SIII Mini VE if it is sticking or is broken.

Written By: Megan



INTRODUCTION

Using this guide, you can successfully replace the power button on your Galaxy SIII Mini VE.



TOOLS:

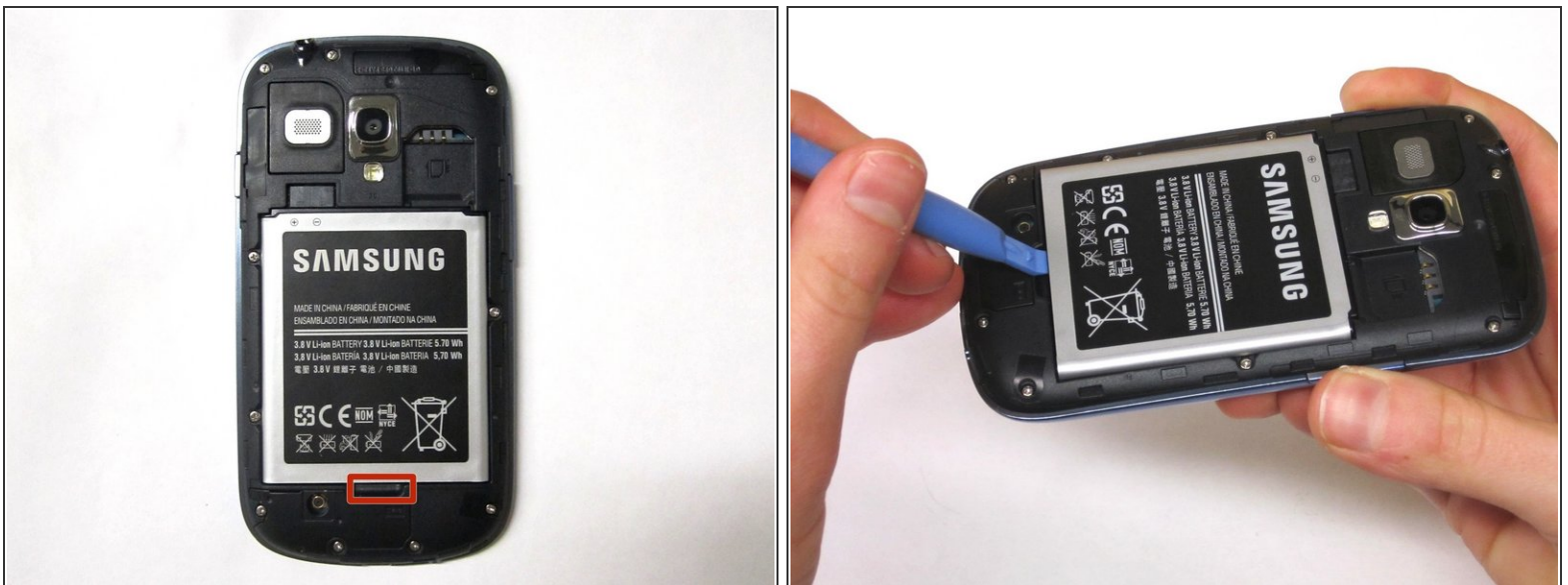
- [Phillips #00 Screwdriver](#) (1)
 - [iFixit Opening Tools](#) (1)
 - [Spudger](#) (1)
-

Step 1 — Removing Rear Casing



- Flip your phone so you are facing the back.
- Locate the notch at the top and gently use your finger or an opening tool to remove the rear casing.

Step 2 — Removing Battery



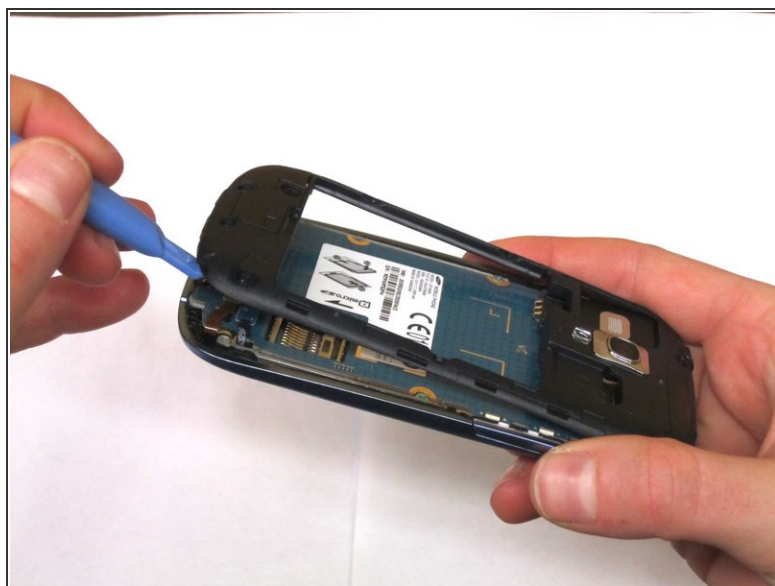
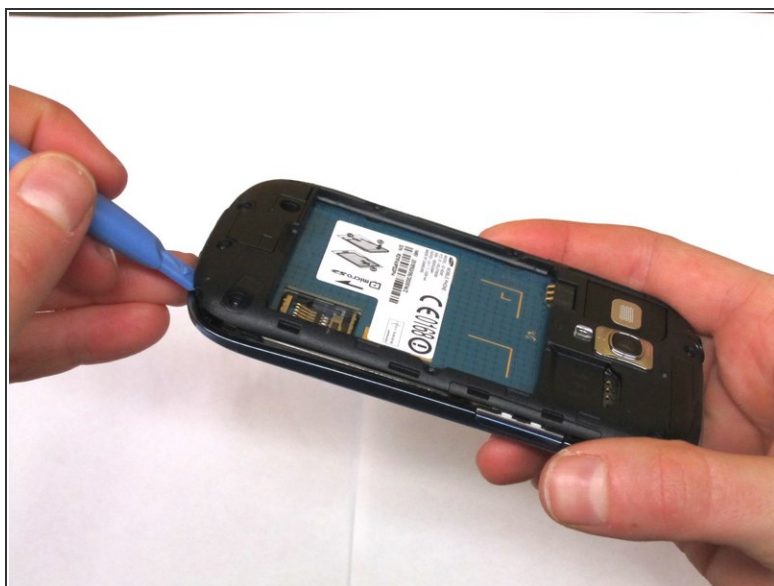
- Use your finger or an opening tool to pry the battery out of the phone.

Step 3 — Removing Screws



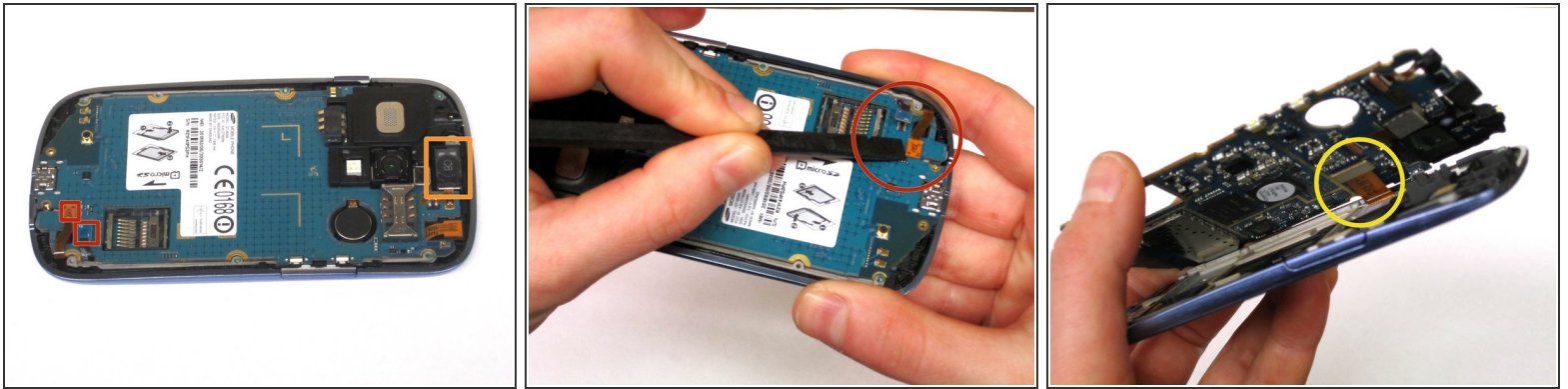
- Use the Phillips #000 Screwdriver to remove the 10, 4mm screws holding the plastic frame in place.

Step 4



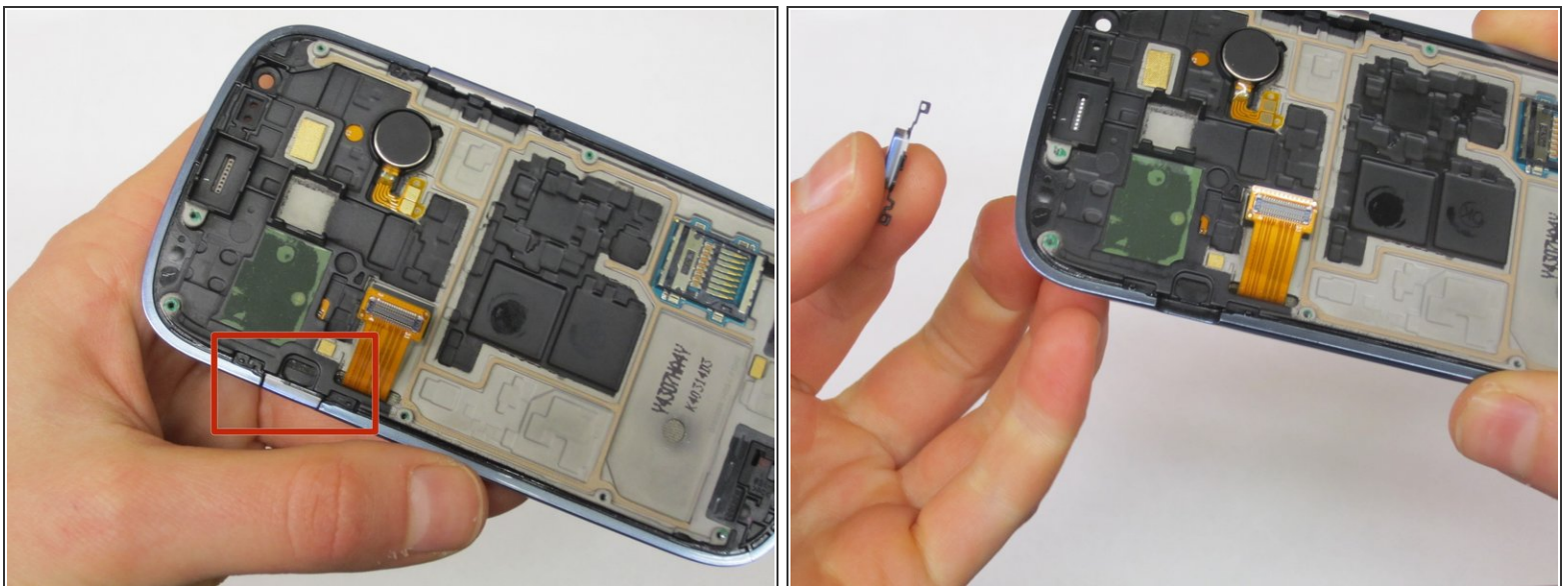
- Using an opening tool, gently separate the plastic framing from the phone.

Step 5 — Removing Circuit Board



- Unhook the two electrical connections at the bottom of the phone using your fingernail or a spudger.
- Next, use the spudger and tweezers to remove the speaker at the top of the phone.
- Once the 3 components have detached, the circuit board should release from the phone except for 1 connection on the underside.
- Detach this connection using the spudger.

Step 6 — Power Button



- The power button is connected by two plastic posts, simply lift the button away from the phone using your fingers.

To reassemble your device, follow these instructions in reverse order.