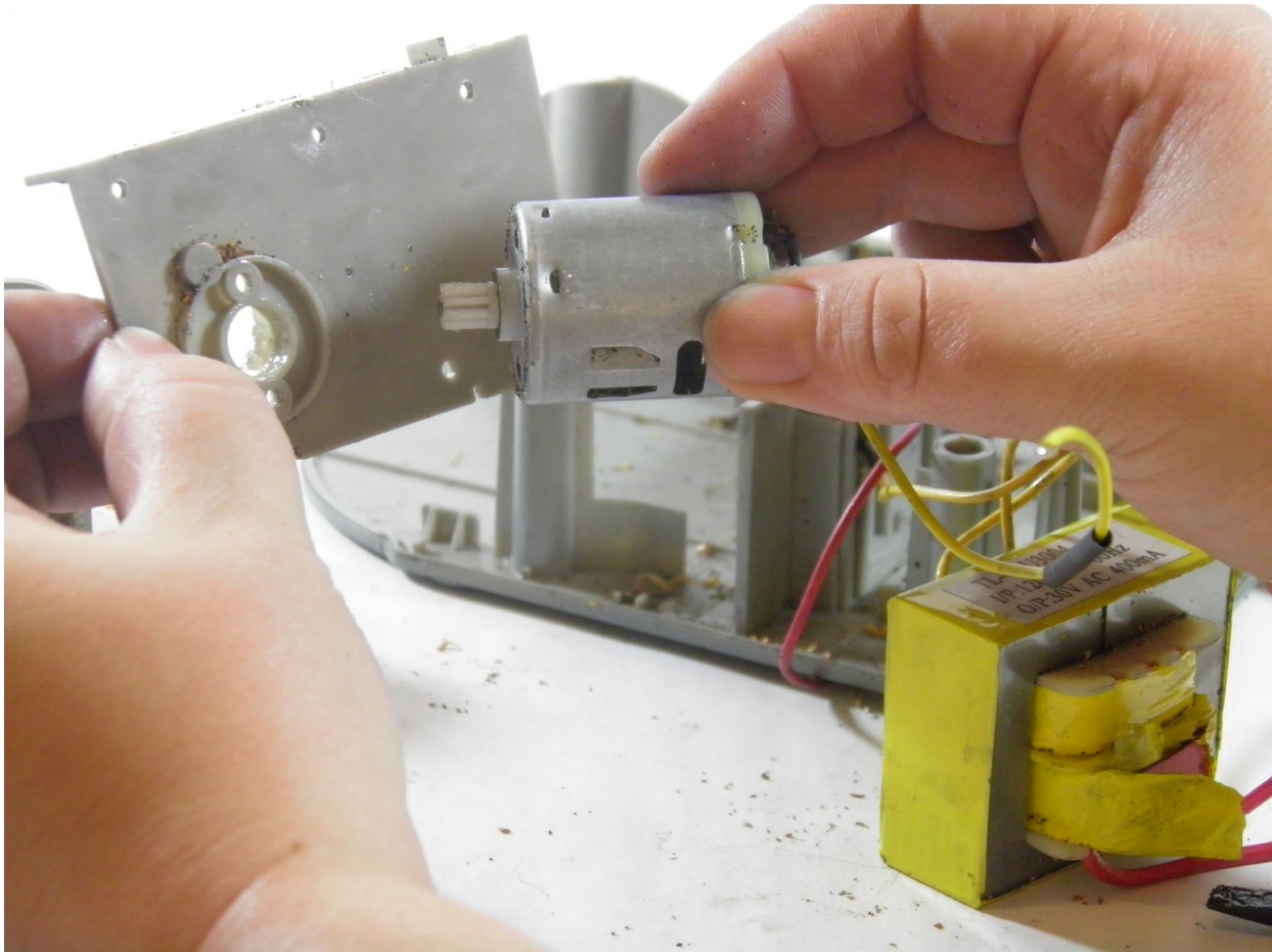




Staples 34462 Electric Pencil Sharpener A/C Motor Replacement

This guide will walk you through the steps for replacing the A/C motor in your Staples 34462 Electric Pencil Sharpener.

Written By: Brian Eliason



INTRODUCTION

Is your sharpener not working at all? Does it seem to be "dead"? Then you may need to follow these steps to replace the A/C motor on your Staples 34462 Electric Pencil Sharpener. See our [troubleshooting guide](#) for more information on this problem. Note that some soldering may be necessary to complete the steps in this guide. See iFixit's [soldering guide](#) for more tips and help on how to best accomplish this step.




TOOLS:

- [Phillips #00 Screwdriver](#) (1)
 - [iFixit Opening Tools](#) (1)
 - [Spudger](#) (1)
 - [Portable Soldering Iron](#) (1)
-

Step 1 — Cover



- Pull out the shavings tray from the pencil sharpener.

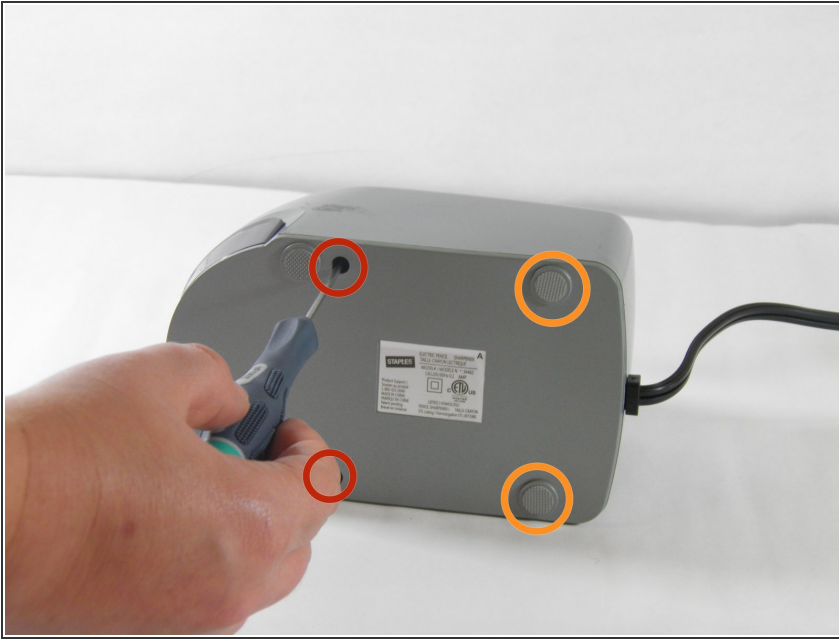
 Beware of loose pencil shavings falling on your workspace.

Step 2



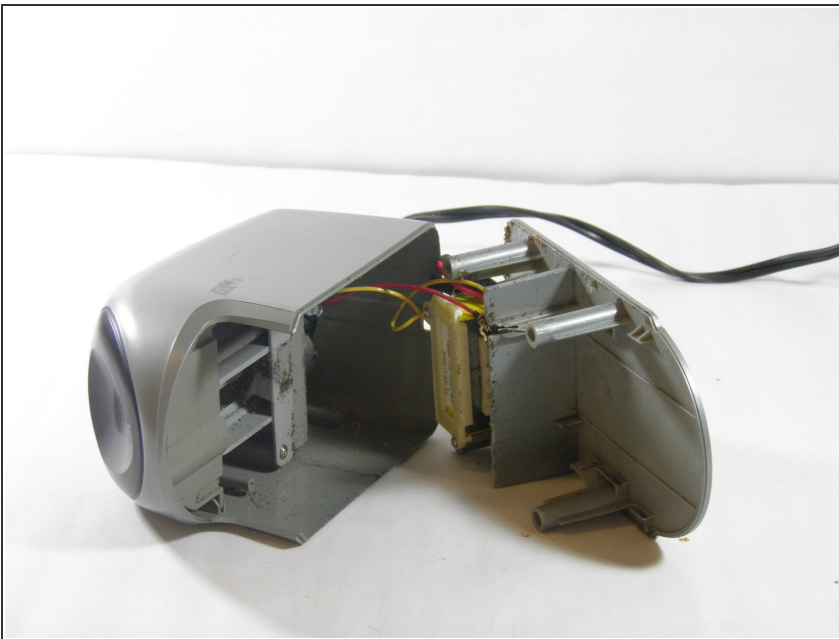
- Turn the pencil sharpener on its side.

Step 3



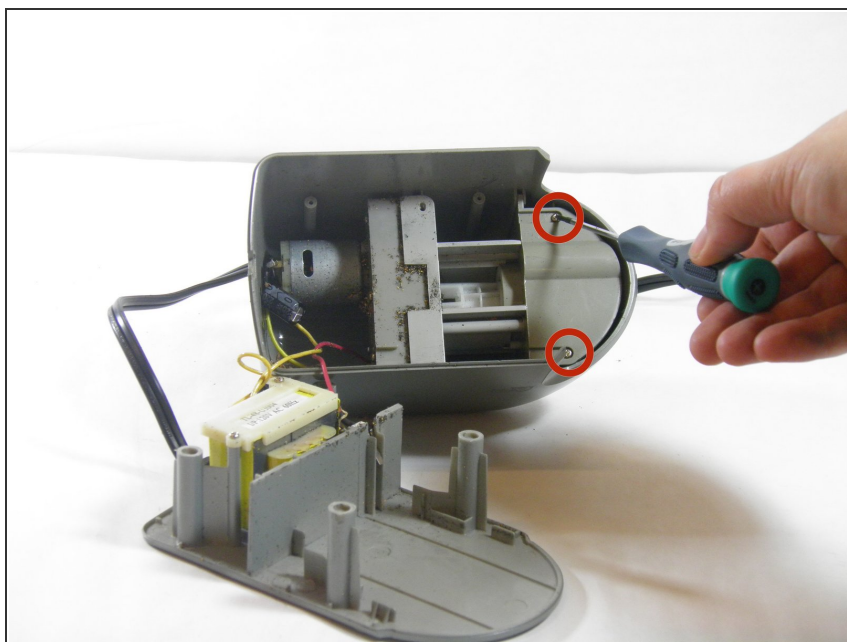
- Using a Phillips00 screwdriver, remove the two front 11.6mm screws.
 - Using the plastic opening tool, remove the back plastic feet.
 - After removing the back plastic feet, using a Phillips 00 screwdriver, remove the two back 11.6mm screws.
- i** The hole is deeper than you may think. It may take some time to get the screwdriver to click in.

Step 4



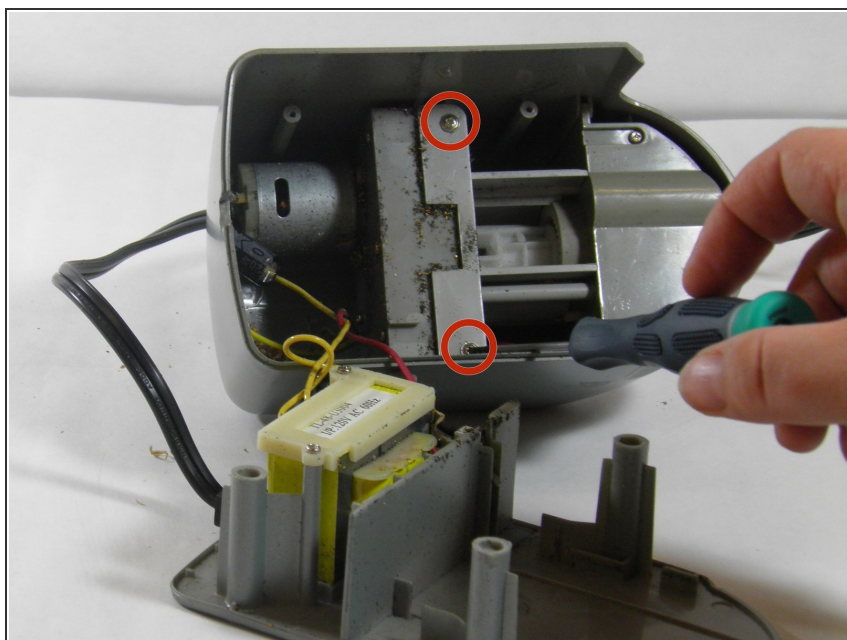
- Carefully pull apart the bottom panel from the top panel.
- !** Be careful not to pull too forcefully as the panels are connected by wires.
- !** Beware of pencil shavings falling out onto your workspace.

Step 5



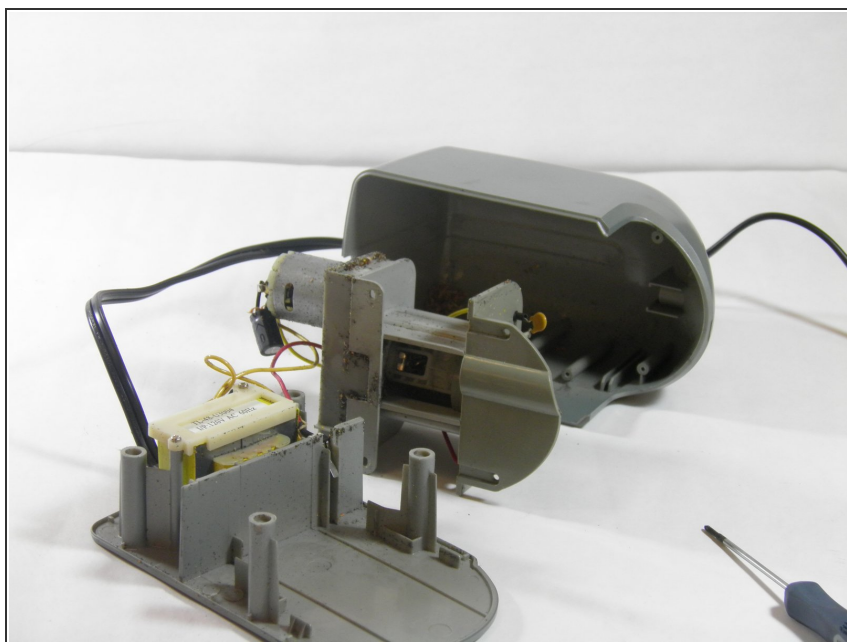
- Using a Phillips00 screwdriver, remove two 8.9mm flat edge screws from the top section of the top panel.

Step 6



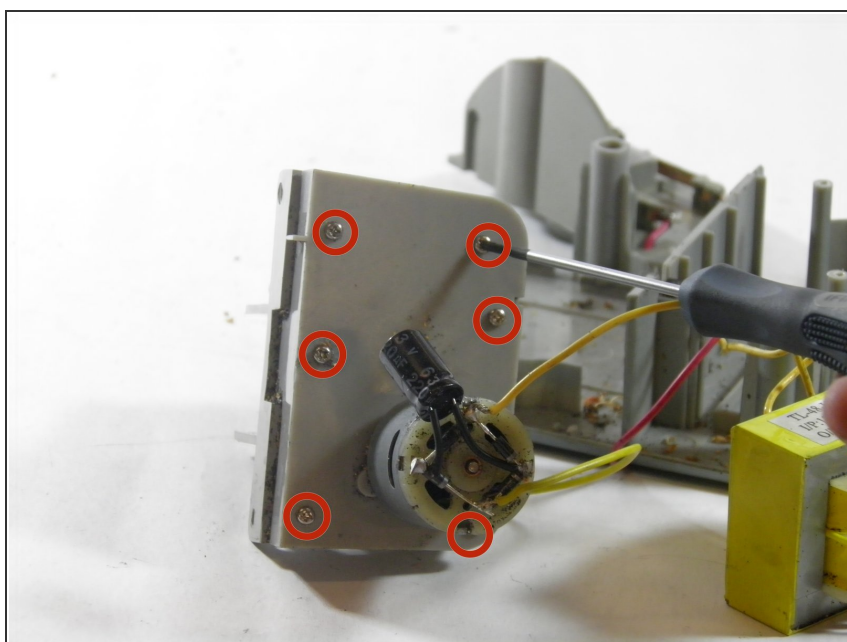
- Using a Phillips00 screwdriver, remove two 10.3mm screws from the middle section of the top panel.

Step 7



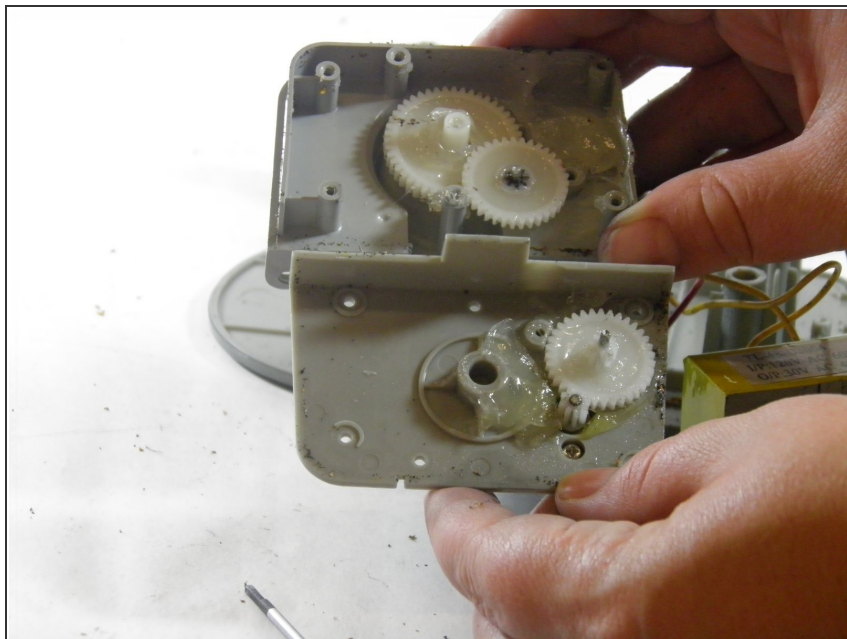
- Carefully pull the cover from the top panel and set it aside.

Step 8 — A/C Motor



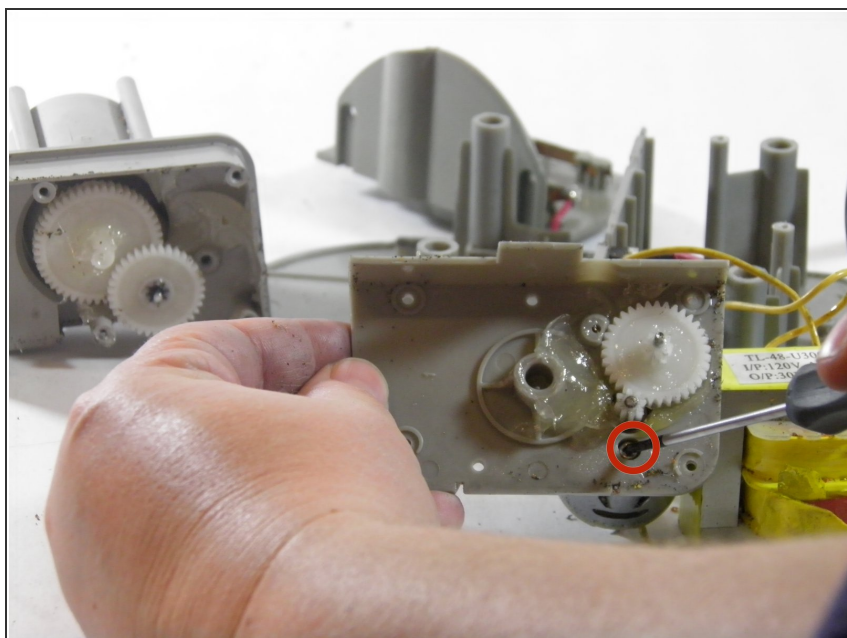
- Using a Philips 00 screwdriver, remove the six 9.87mm screws securing the gear housing.

Step 9



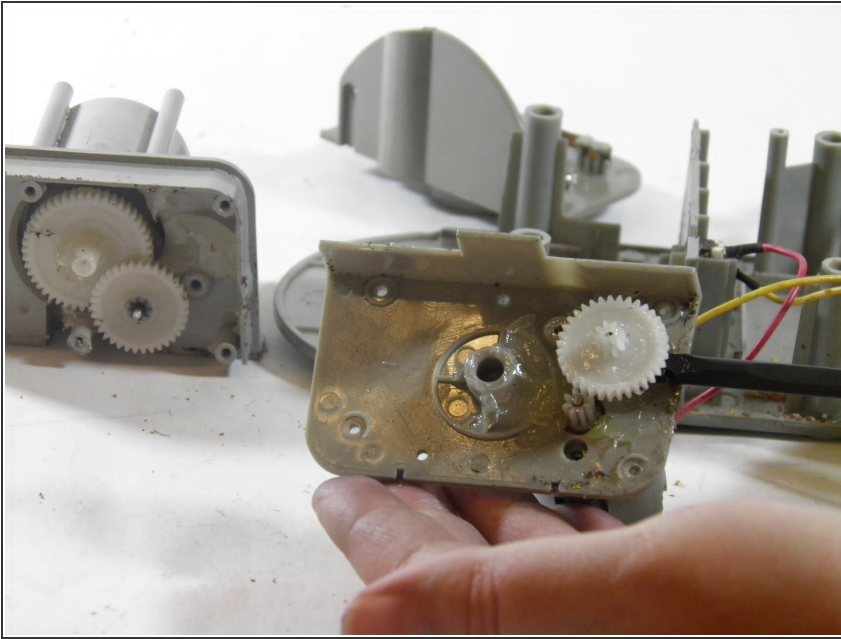
- Carefully pull apart the gear housing's panels.
- ⓘ The gears are lubricated by petroleum jelly.

Step 10



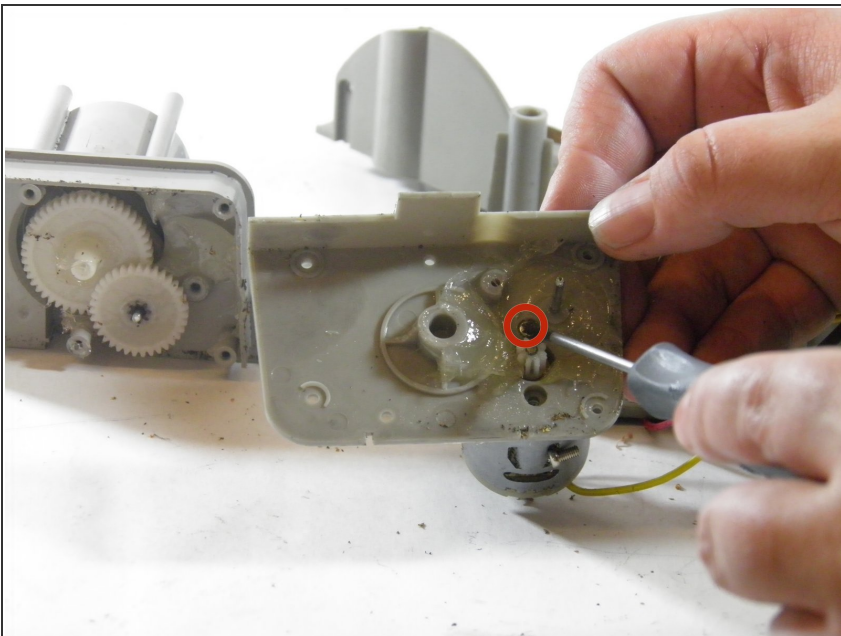
- Using a Philips 00 screwdriver, remove the first 10.3mm screw attaching the A/C motor to the panel.

Step 11



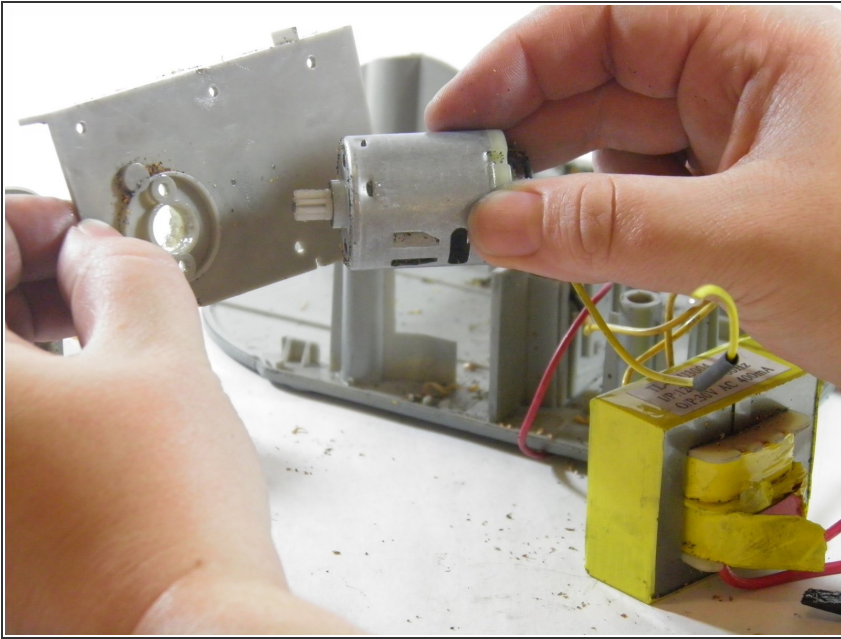
- Gently pry the gear from the panel with a spudger to expose the second screw holding the electric A/C motor to the panel.
- ☑ To ease reassembly, note the orientation of the gear as you pry it free.

Step 12



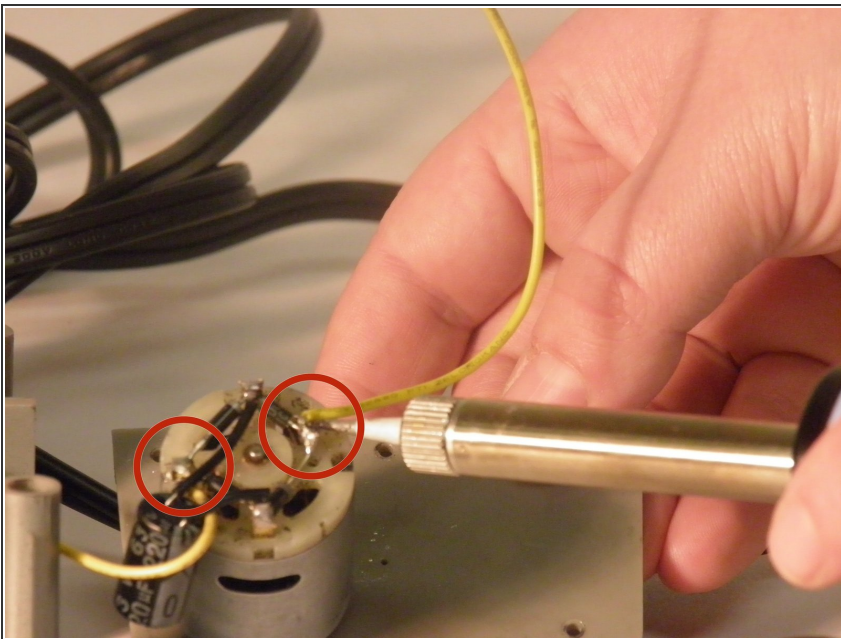
- Using a Philips 00 screwdriver, remove the second 10.3mm screw securing the electric A/C motor to the panel.

Step 13



- Pull out the electric A/C motor from the gear housing panel.

Step 14



- Using a soldering iron, carefully desolder the two wires from the electric A/C motor.
- ⓘ This step requires soldering. See iFixit's [soldering guide](#) for more tips and information.

To reassemble your device, follow these instructions in reverse order.