

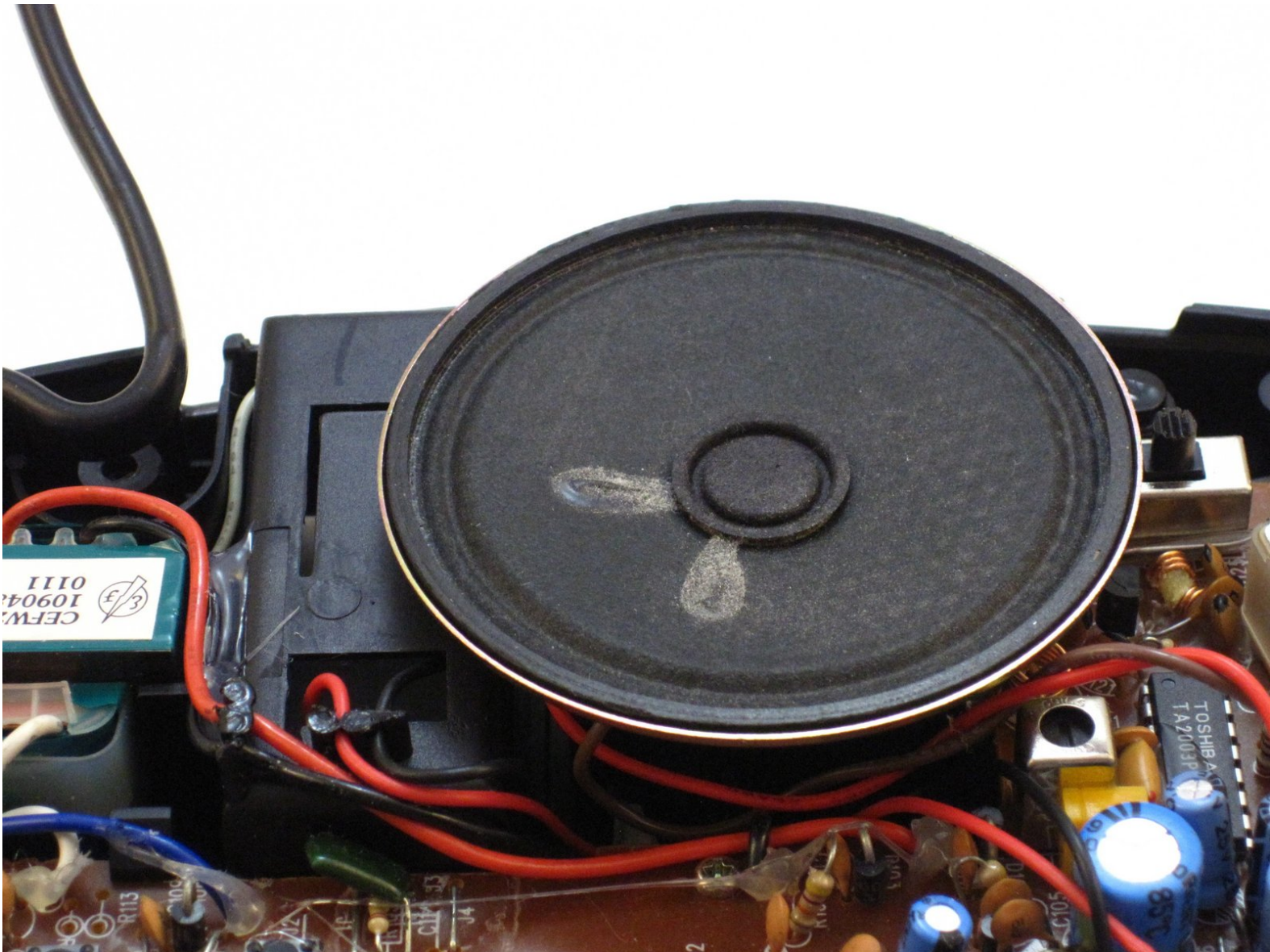


# GE 7-4836B Alarm Clock AM-FM Radio

## Speaker Replacement

This guide shows how to replace a speaker for the GE 7-4836B Alarm Clock AM-FM Radio.

Written By: Dominick Giguere



## INTRODUCTION

This guide involves further disassembly of the clock radio and will require using several different tools and techniques, including using a soldering iron. If you need help on how to use a soldering iron, consult this iFixit guide: [How To Solder and Desolder Connections](#)



### TOOLS:

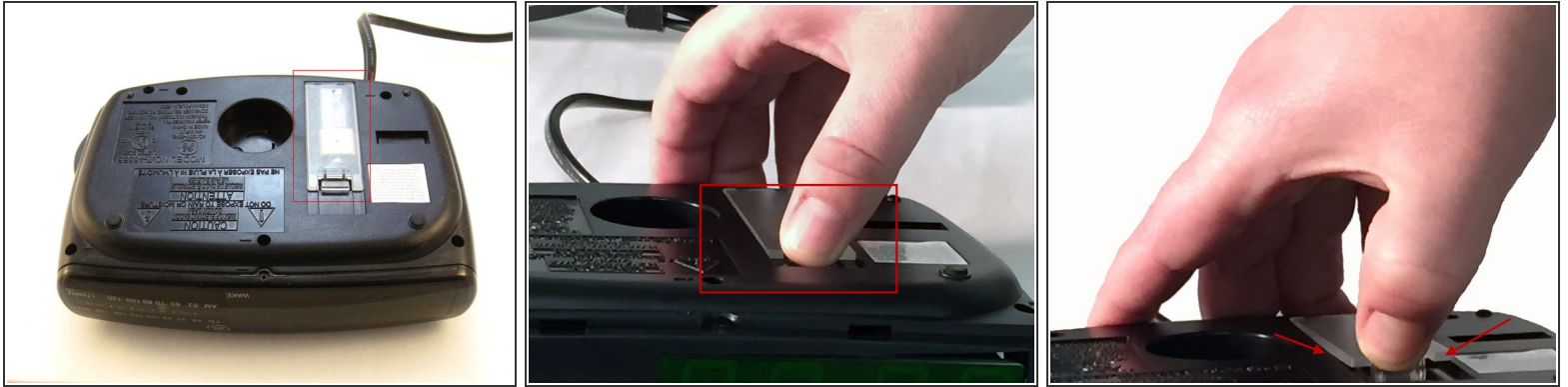
- [Portable Soldering Iron](#) (1)
- [Solder](#) (1)
- [Phillips #00 Screwdriver](#) (1)



### PARTS:

- [65 mm 115048352530 AM-FM Alarm Clock Speaker](#) (1)

## Step 1 — Battery Compartment Cover



- Find the battery compartment on the bottom of the clock radio.
- Using your thumb, push the compartment cover latch toward the battery.
- With the latch pushed in, pull the compartment cover upward to remove it..

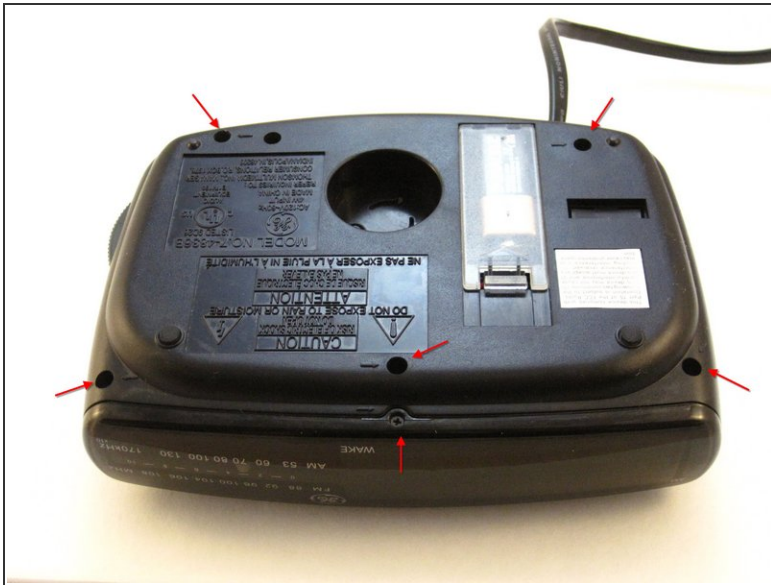
## Step 2 — Battery



- Lift the battery from the compartment.
- Pull the battery up and gently disconnect it from the battery connector.



## Step 3 — Screws



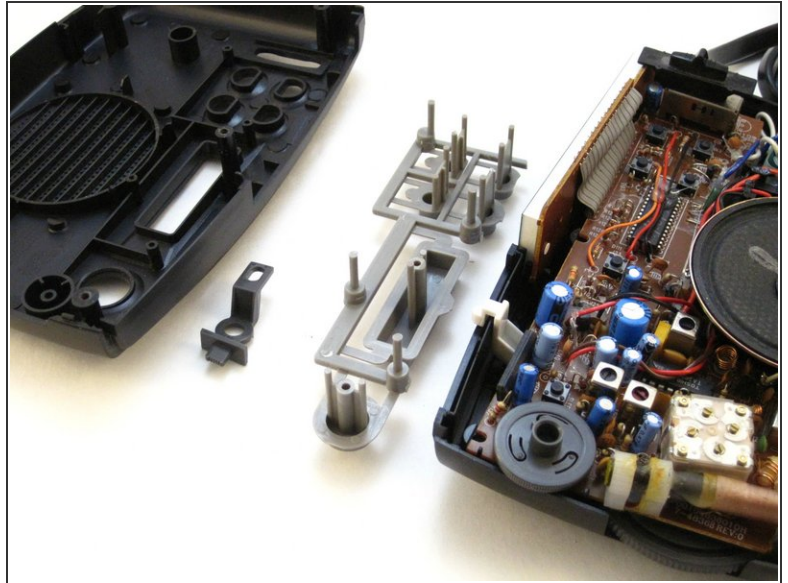
- Using a Phillips #00 Screwdriver, unscrew the six 12mm screws from around the bottom of the clock radio.

## Step 4 — LCD Cover



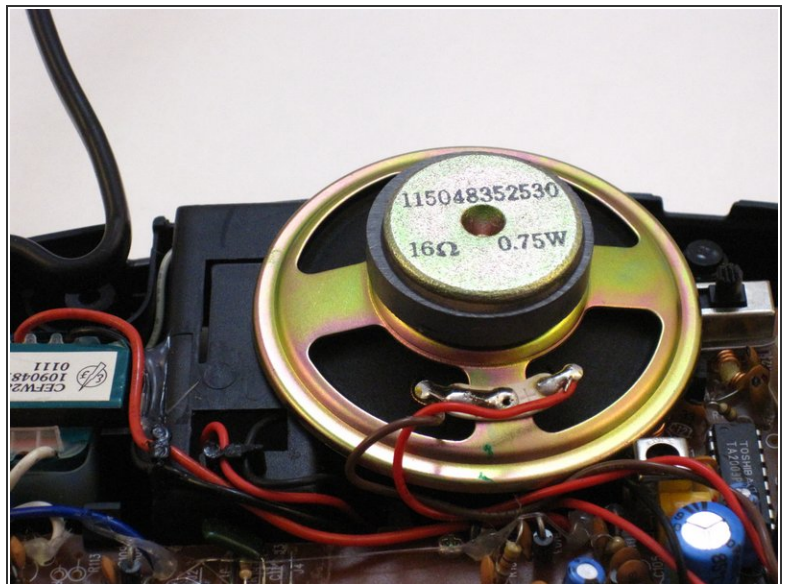
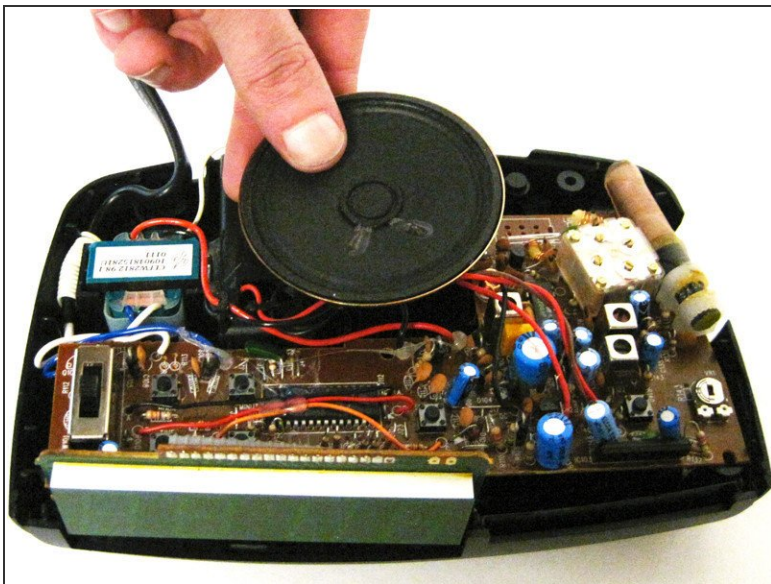
- Gently pull the liquid crystal display (LCD) cover off.

## Step 5 — Clock Radio



- Lift the top off. Two gray, plastic internal pieces will fall out when you do this; set them aside.

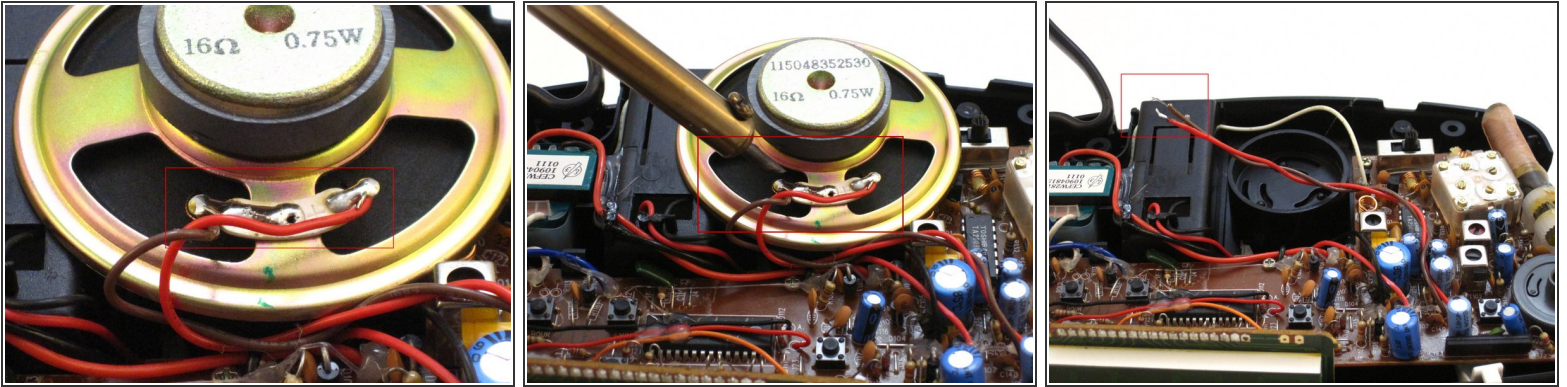
## Step 6 — Speaker



- Grip the speaker.
- Lift the speaker from the holder.
- Turn the speaker over.

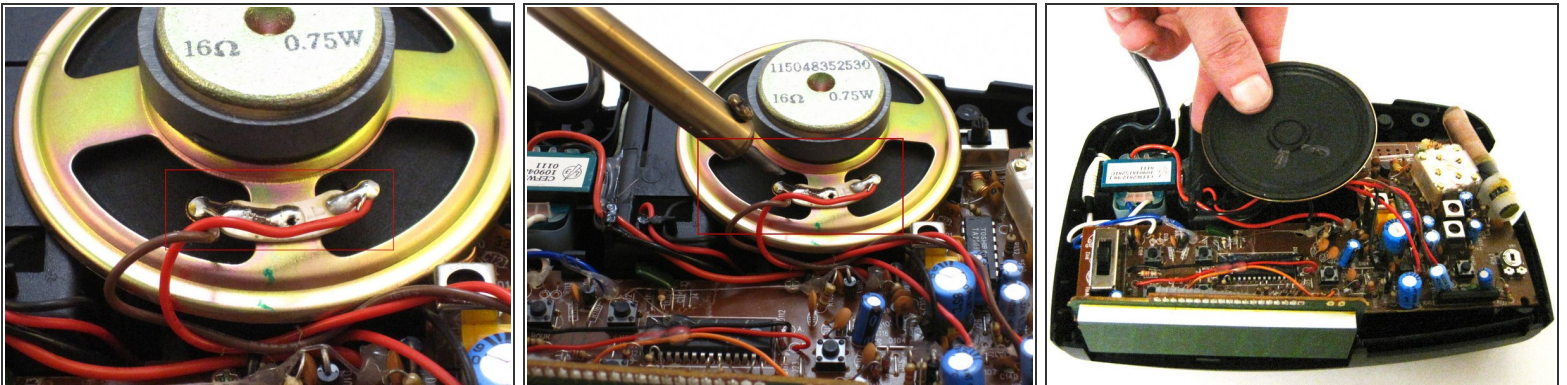


## Step 7 — Speaker from Wires



- The red wire is the + and the tan wire is the -. These wires are connected with solder.
- Apply the hot soldering iron tip to the speaker connection solder.
- Pull the speaker away from the wires.

## Step 8 — New Speaker



- Attach a new 65 mm speaker, model #115048352530, with the wire connectors. Match the red wire to the + and the tan wire to the -.
- Solder the wires to connect. Let the solder cool.
- Reverse Step 6 to insert the new speaker in holder.

To reassemble your device, follow these instructions in reverse order.