



Xbox 360 Wireless Controller Logic Board Replacement

Written By: Brett Hartt





TOOLS:

- [Spudger](#) (1)
- [T8 Torx Security Bit Screwdriver](#) (1)
- [Tweezers](#) (1)

Step 1 — Battery



- Depress the battery release button on the top of the controller.
 - Remove the battery holder from the controller.
- i** The standard option for Xbox 360 Wireless Controllers Battery Packs is AA batteries. A rechargeable battery is also available, but both battery options are removed from the controller in the same way.

Step 2 — Rear Case



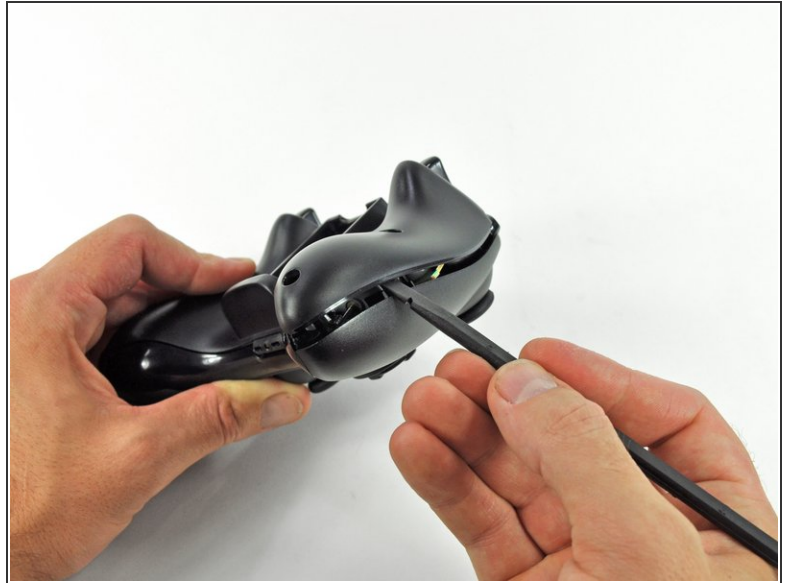
- Use a pair of tweezers to peel the barcode sticker from the battery compartment.

Step 3



- Remove the seven 9.3 mm T8 Security Torx screws securing the rear case to the front case.

Step 4



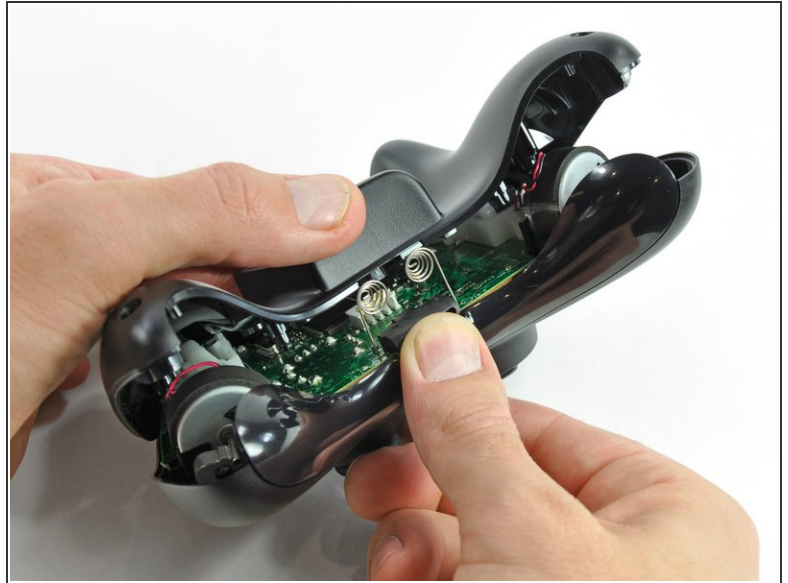
- Insert a [Spudger](#) between the front and rear cases along the left edge of the controller.
- Rotate the spudger toward the front of the controller, prying the two cases apart.

Step 5



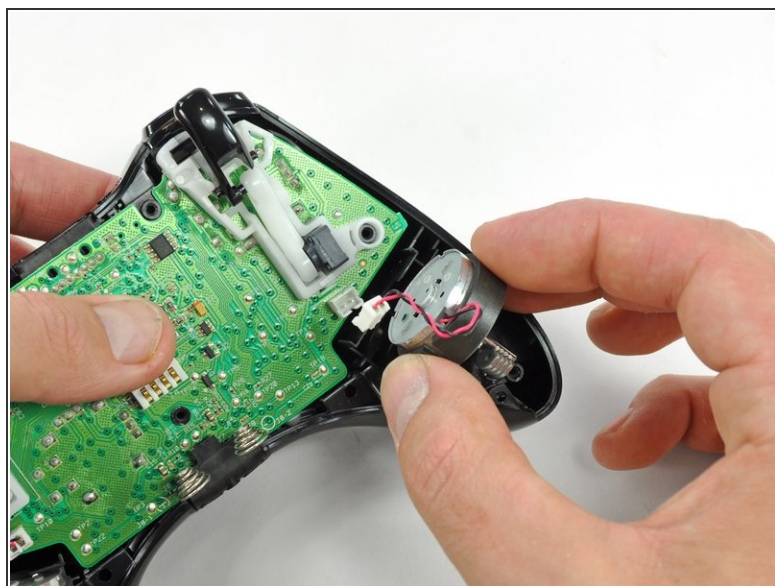
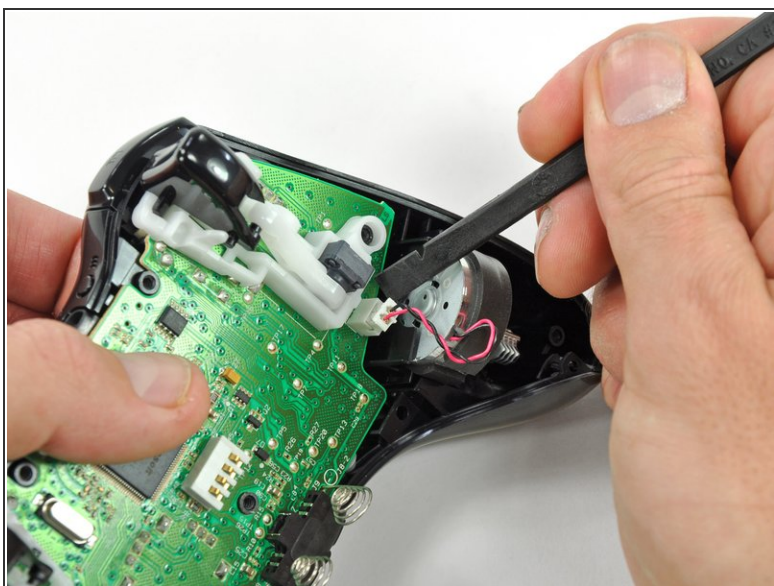
- Insert a spudger between the front and rear cases, near the headphone jack.
- Rotate the spudger toward the front of the controller to pry the two cases apart.

Step 6



- Grasp the controller by the battery compartment and the headphone jack.
- Lift the battery compartment away from the headphone jack, separating the rear case from the front case and logic board.
- ☛ The battery contact springs are held in place by slots in the battery housing in the rear case. Be sure to realign them properly during reassembly.

Step 7 — Vibration Motors



- Use the flat end of a spudger to remove the vibration motor cable, moving it upward from its socket on the logic board.
- Lift the vibration motor out of the front case.

Step 8



- Remove the vibration motor from the other side of the controller using the same method previously described.
- ⓘ The **left motor** has significantly more counterweight than the right motor.

Step 9 — Logic Board



- Lifting from the headphone jack and power plug, remove the logic board from the front case.

To reassemble your device, follow these instructions in reverse order.