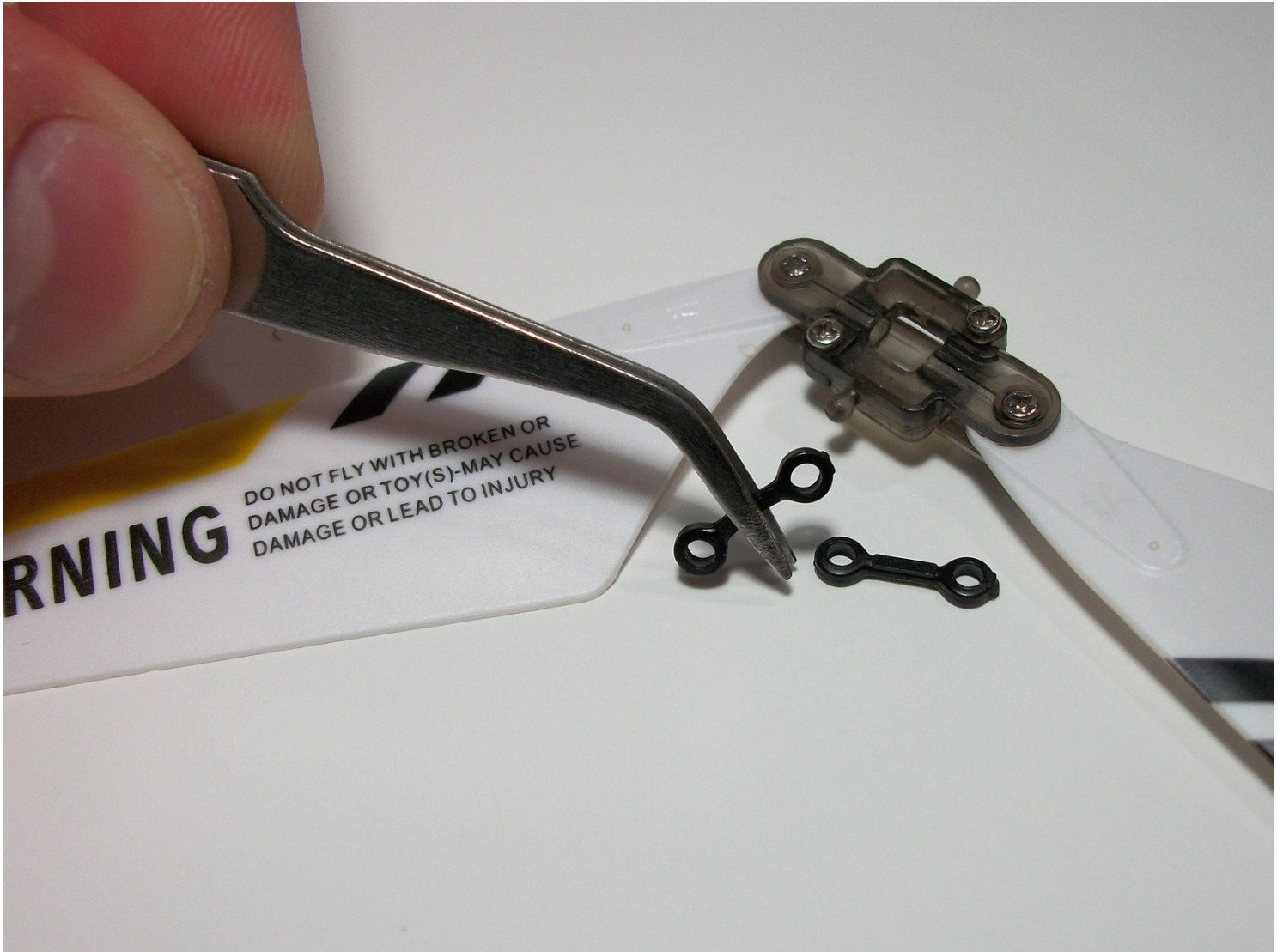




# Syma S107 Gyro Replacement

Replace the the gyro on your Syma S107 so that...

Written By: Christopher Smith



# INTRODUCTION

Replace the the gyro on your Syma S107 so that it stops self destructing.

## TOOLS:

[Phillips #0 Screwdriver](#) (1)  
[Tweezers](#) (1)

## PARTS:

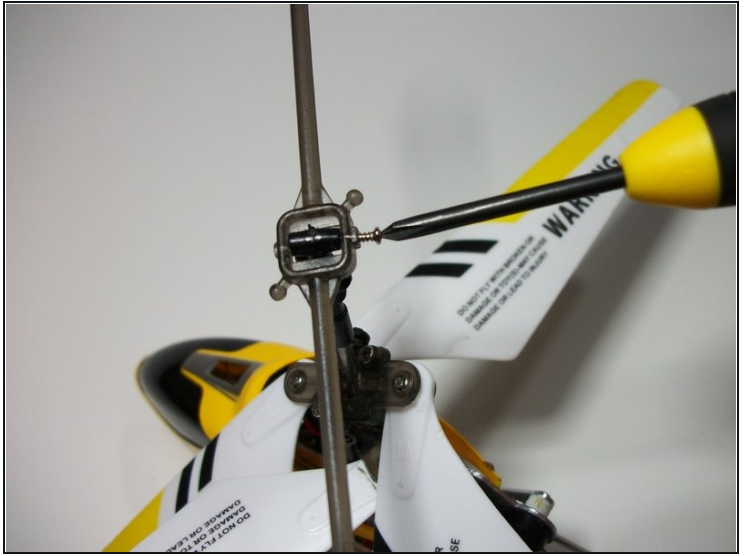
[Syma S107 Full Set of Replacement Parts](#) (1)

### Step 1 — Counterweight Bar



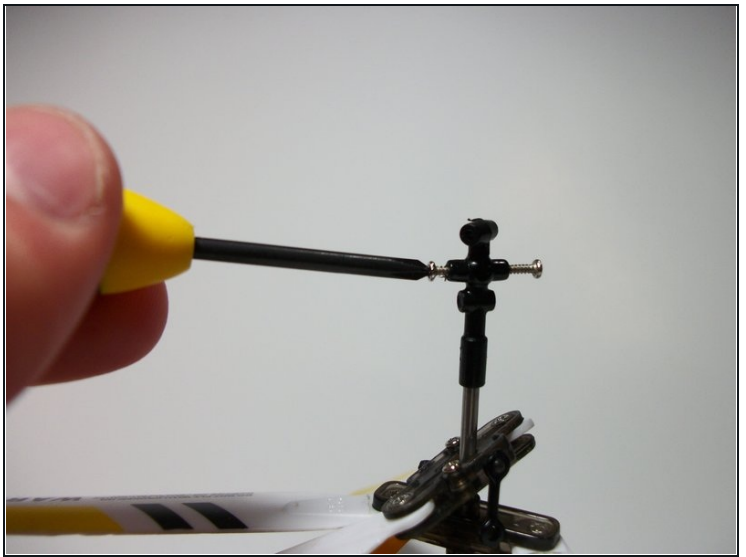
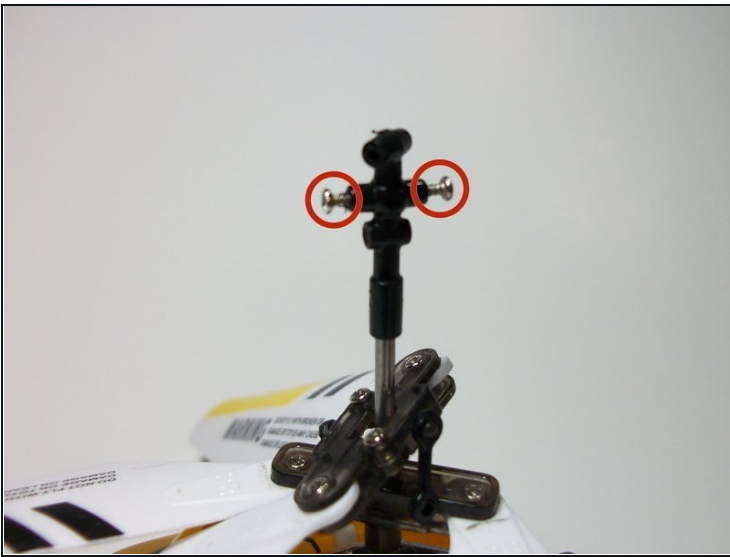
- Using [tweezers](#), gently remove the two stabilizing links by pulling straight away from the point of connection.

## Step 2



- Remove the counterweight bar by removing the screw.
  - One 10.1mm Phillips #0.

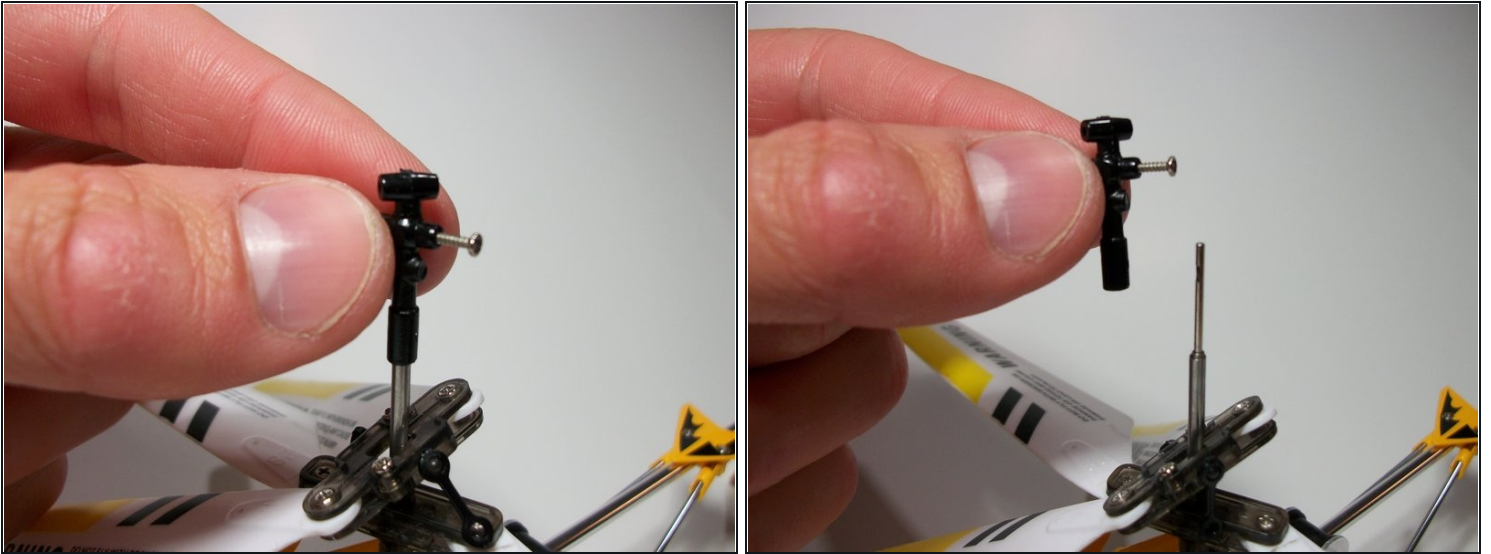
## Step 3 — Gyro Carriage



- Remove the gyro carriage by removing the following screws:
    - Two 5.6mm Phillips #0.
- ☒ When reinstalling these screws make sure to line up one screw with the keyway on the main rotor shaft.



## Step 4



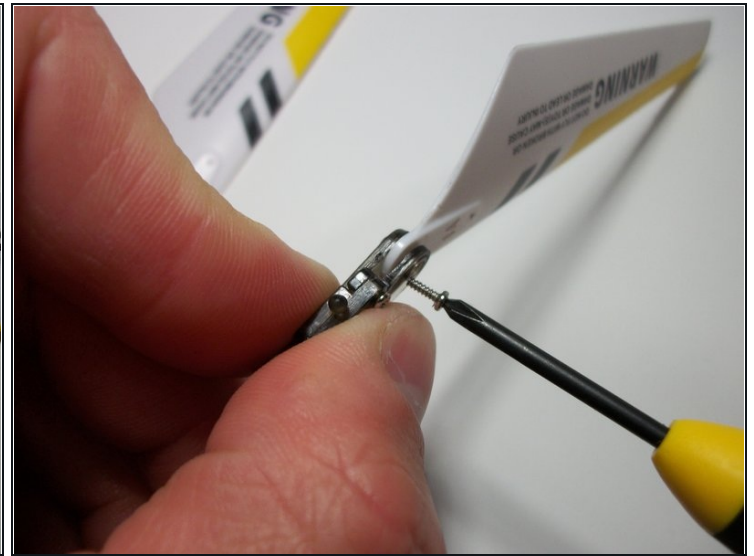
- Gently remove the broken gyro carriage by pulling up.
- Remove blade assembly by simply sliding it up and off the shaft.

## Step 5 — Blade Carriage



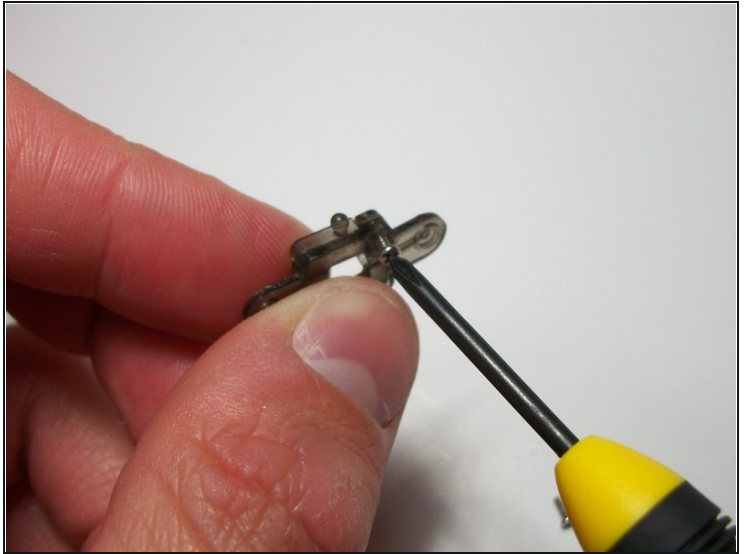
- Again using tweezers gently remove the stabilizing links from the blade carriage by pulling straight away from the point of connection.

## Step 6



- Remove the blades from the blade carriage by removing the following screws:
  - Two 4.7mm Phillips #0.

## Step 7



- Remove the following screws:
  - Two 4.5mm Phillips #0.
- ⓘ Make sure to remove any broken plastic pins before reassembling the components.
- ☑ You will have to slide the two halves of the blade carriage over the pins on the gyro carriage first when reassembling.

---

To reassemble your device, follow these instructions in reverse order.