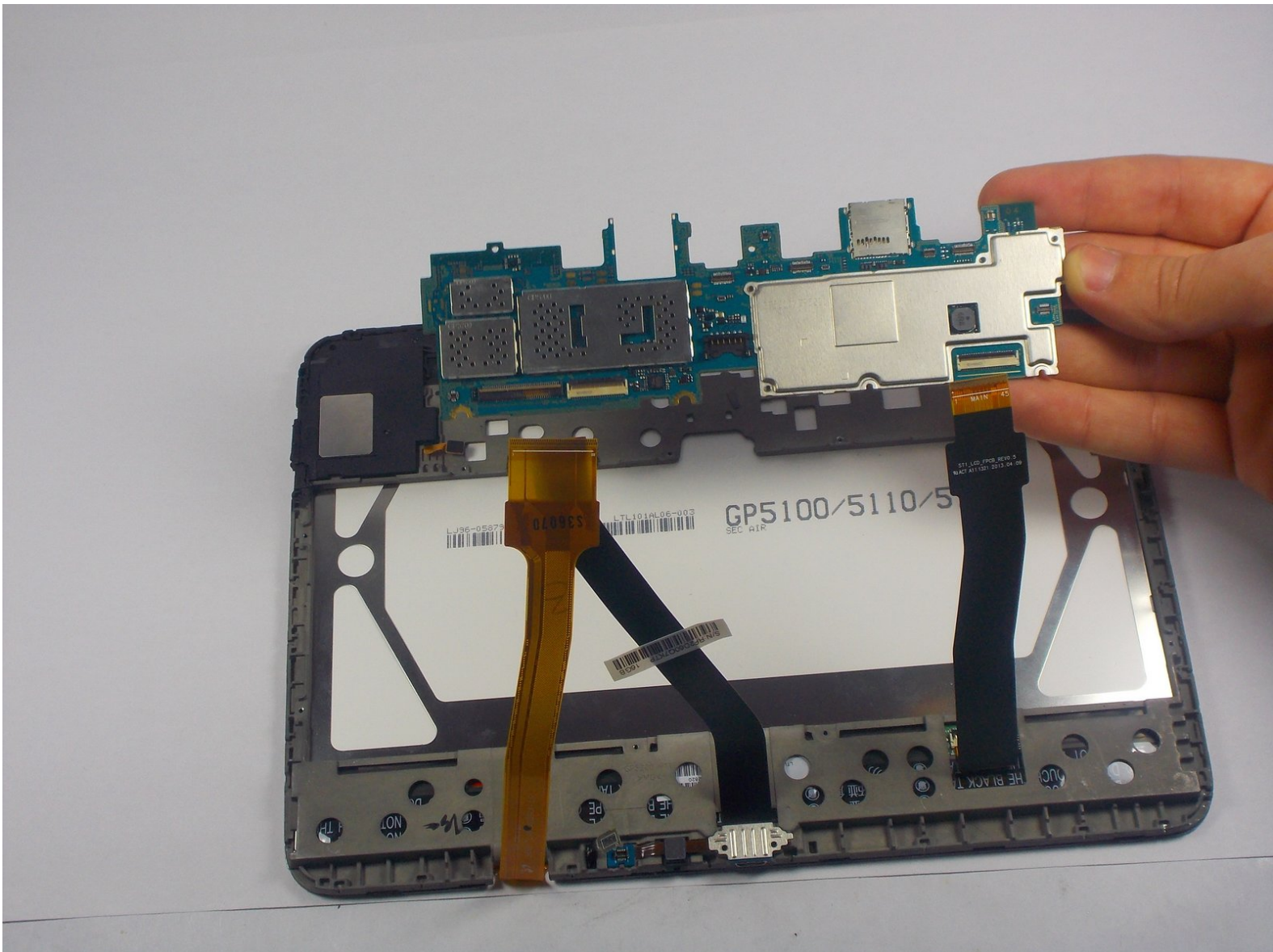




# Samsung Galaxy Tab 3 10.1 Motherboard Replacement

This guide will provide an in depth view on how to replace the motherboard of your Samsung Galaxy Tab 3 10.1

Written By: Devin



## INTRODUCTION

Use this guide to replace the motherboard of your Samsung Galaxy Tab 3 10.1.



### TOOLS:

- [Phillips #00 Screwdriver](#) (1)
- [iFixit Opening Tools](#) (1)



### PARTS:

- [Galaxy Tab 3 10" Wi-Fi Motherboard](#) (1)

## Step 1 — Open Device



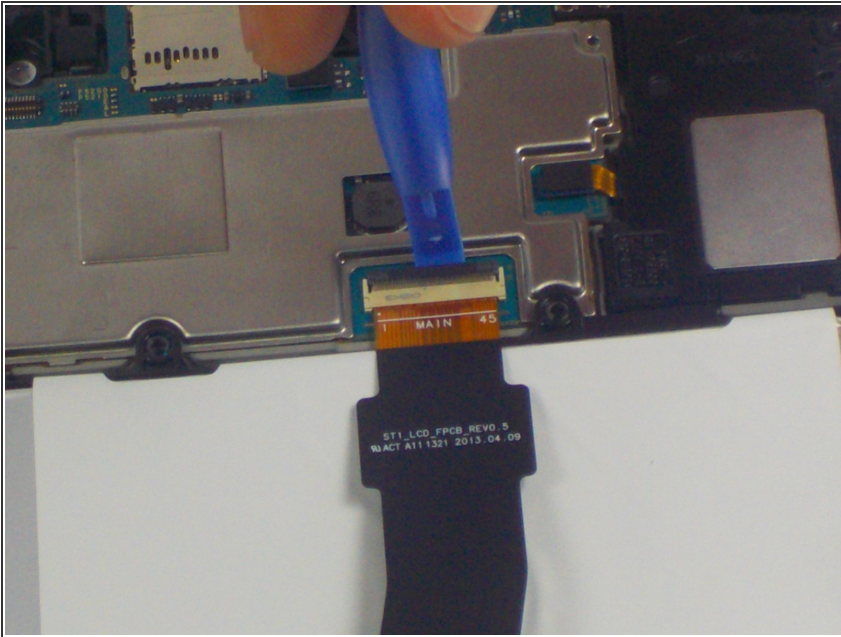
- Using your plastic opening tools, carefully start to pry apart your Samsung Galaxy Tab 3 10.1 all along the edge. Do this until the back side of the tablet can be removed.
- Be careful when inserting the opening tools to avoid damaging the speakers on left and right sides. The picture actually show a dangerous position for the right (small) opening tool.

✪ During reassembly, be careful not to insert bottom, left, nor right edges first—doing so can damage the power button, and prevent the front panel from sitting totally flush.

⚠ If screen is cracked like shown imagine, Place tape on screen to prevent injury.

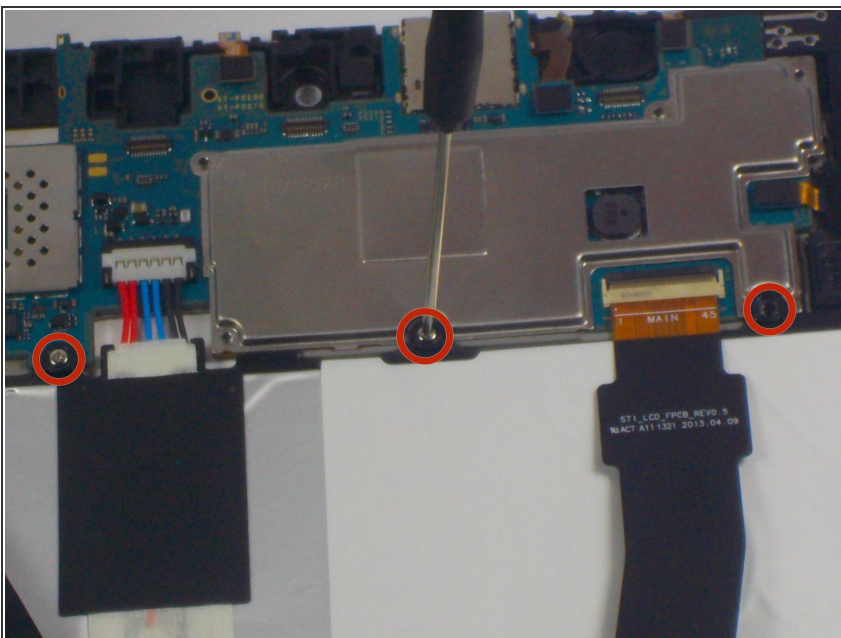


## Step 2 — Ribbon Cables



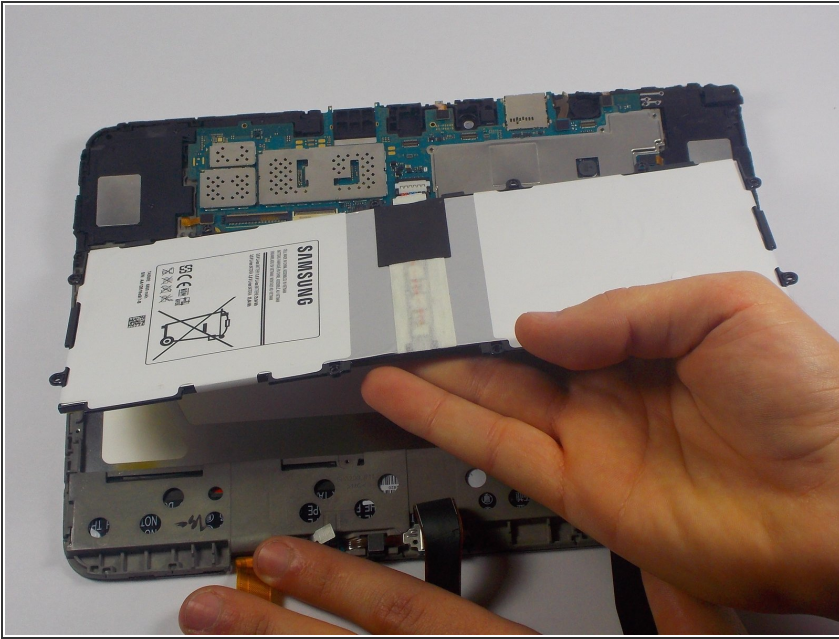
- Gently remove tape over ribbon cable connectors and set it to the side. Using the opening tools, gently lift the connector latches to disconnect the ribbon cables.

## Step 3 — Battery Screws



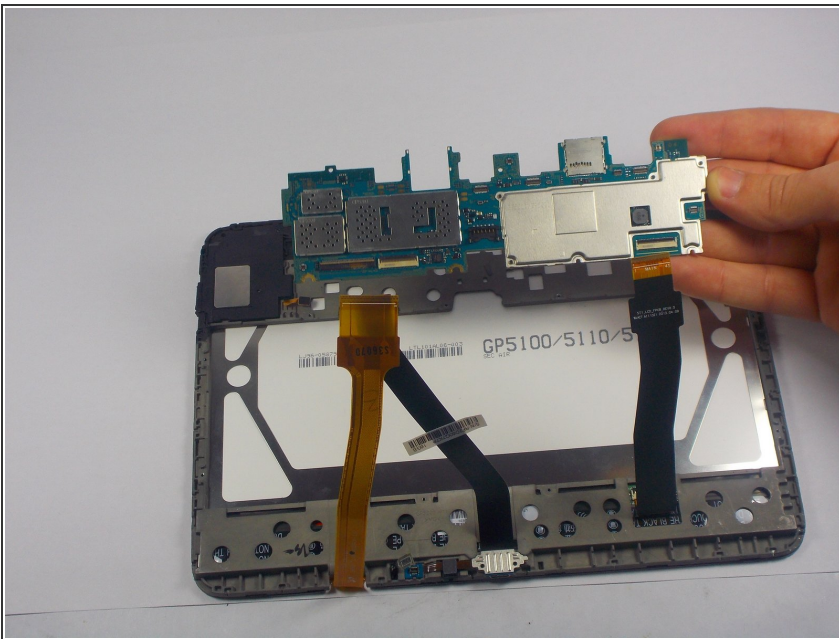
- Using a Phillips #00 screwdriver, remove the ten screws securing the battery to the motherboard.
- ⓘ Make sure to keep screws in a secure location for reassembly.

## Step 4 — Removal



- Pull back the ribbon cables, lift up the original battery, and disconnect the battery by exerting upward pressure from beneath the battery.

## Step 5 — Motherboard removal



- Using the plastic opening tool, pry on the edge of the motherboard lifting it up. Keeping one side lifted, insert the tip of your other removal tool and continue prying. Work the edges of the motherboard, moving the tips of the tools away from each other until the motherboard is free.

To reassemble your device, follow these instructions in reverse order.