



PlayStation 3 Slim Antennas Replacement

Replace antennas with broken wires or connectors.

Written By: Andrew Bookholt



INTRODUCTION

Use this guide to replace your PlayStation 3 Slim's Bluetooth and Wi-Fi antennas.



TOOLS:

- [Metal Spudger](#) (1)
- [Phillips #1 Screwdriver](#) (1)
- [Spudger](#) (1)
- [T8 Torx Security Bit Screwdriver](#) (1)



PARTS:

- [Sony PlayStation 3 Slim Bluetooth Antenna](#) (1)

Step 1 — Top Cover



- Turn the PS3 over and lay it on its backside.
- Carefully peel the warranty sticker up off the lower case to reveal a hidden screw cover.
- ☑ To avoid activating the **VOID** that may come up, heat the sticker carefully to remove and replace it cleanly.

Step 2



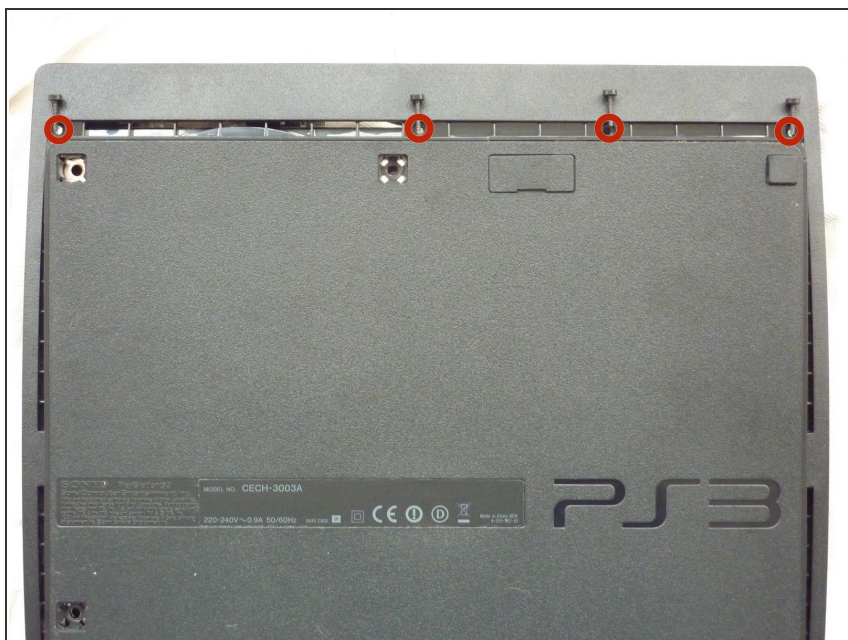
- Use the flat end of a metal spudger to pry up the seven screw covers around the edge of the lower case.

Step 3



- Remove the seven 37 mm Phillips screws securing the top cover to the lower case.

Step 4



- Remove the four 13.3 mm T8 security Torx screws beneath the Blu-ray drive opening. (Some models may only have three screws)

Step 5



- Lift the top cover from its rear edge and rotate it toward the front of the PS3.
- Lift the top cover off the PS3.

Step 6 — Power Supply



- Squeeze the AC inlet connector's locking mechanism and pull straight up to disconnect it from the power supply.

Step 7



- Pull the DC-Out cables straight up to lift their connector up and out of its socket on the power supply.

Step 8



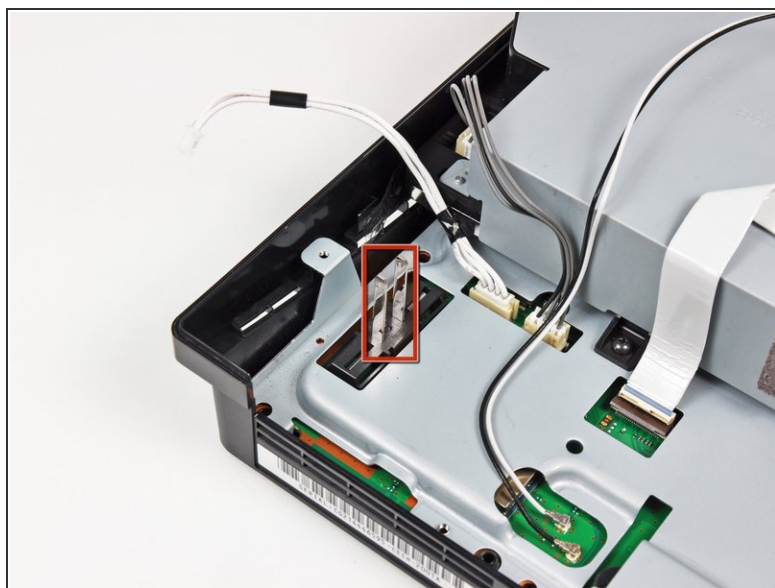
- Remove the two 7.6 mm Phillips screws securing the power supply to the lower case.

Step 9



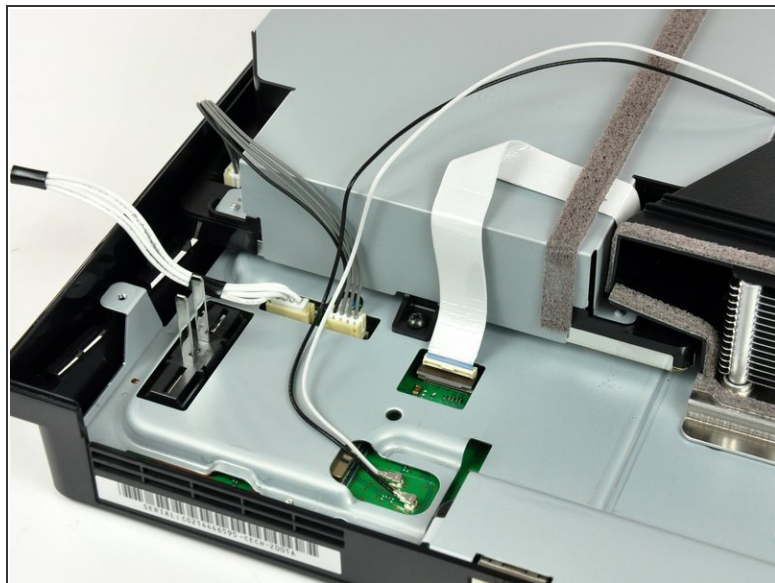
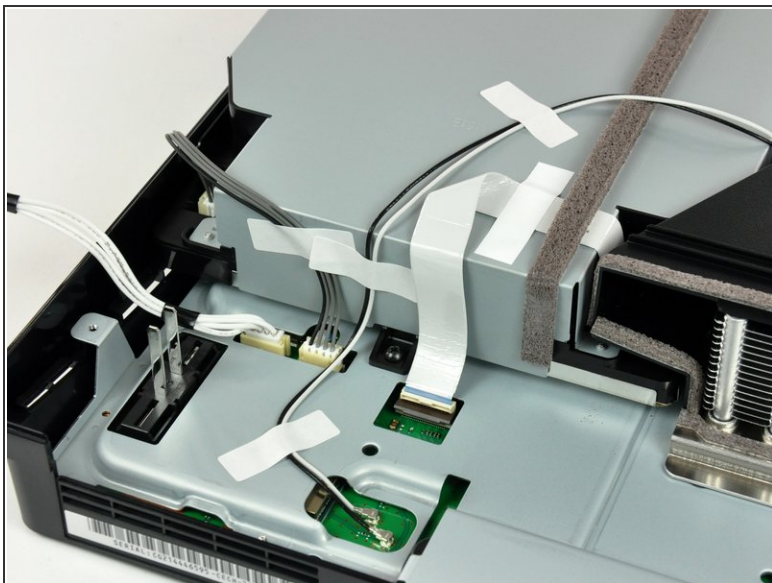
- Lift the power supply upward from its left edge as viewed from the front of the PS3.

Step 10



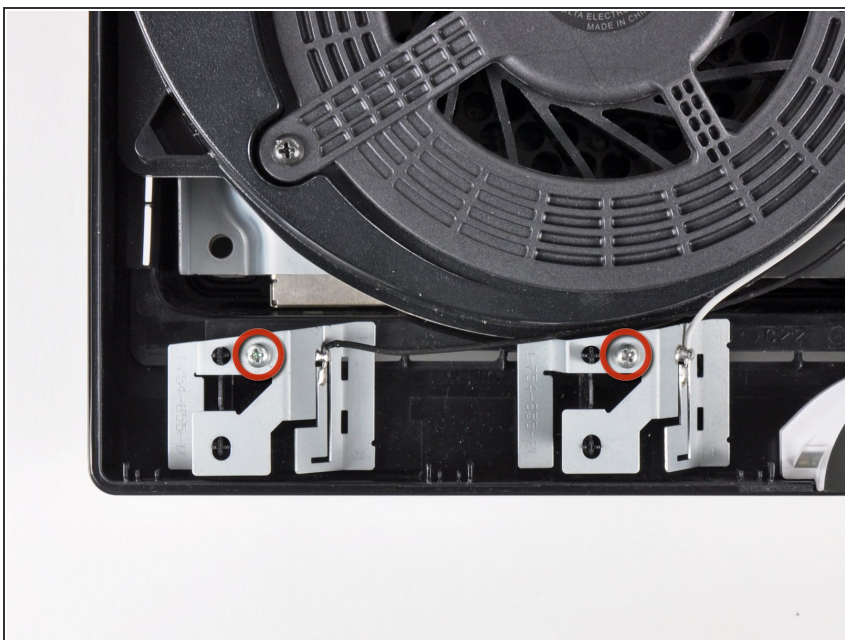
- Continue to lift the left edge of the power supply until it lifts off the two metal posts shown in the second picture.
- Remove the power supply from the PS3, minding any cables that may get caught.

Step 11 — Antennas



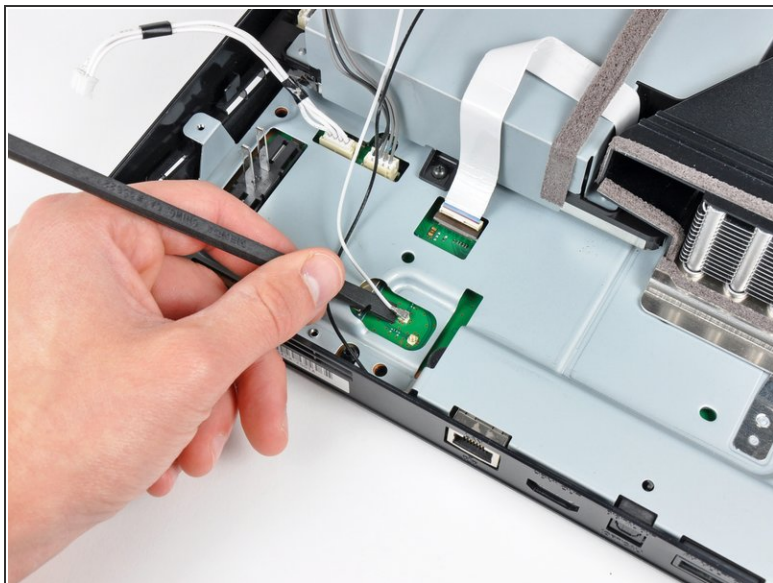
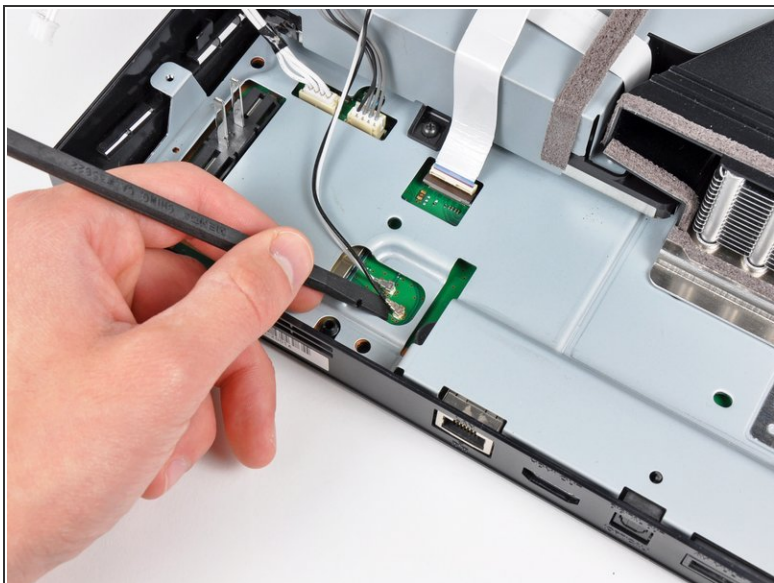
- If present, remove the pieces of tape securing the antenna cables to the fan shroud, Blu-ray drive, and top shield.

Step 12



- Remove the two 6.2 mm Phillips screws securing the antennas to the lower case.

Step 13



- Use the flat end of a spudger to pry both antenna connectors up off their sockets on the motherboard.

Step 14



- Lift the antennas off their plastic positioning posts and remove them from the lower case, minding their cables that may get caught.

To reassemble your device, follow these instructions in reverse order.