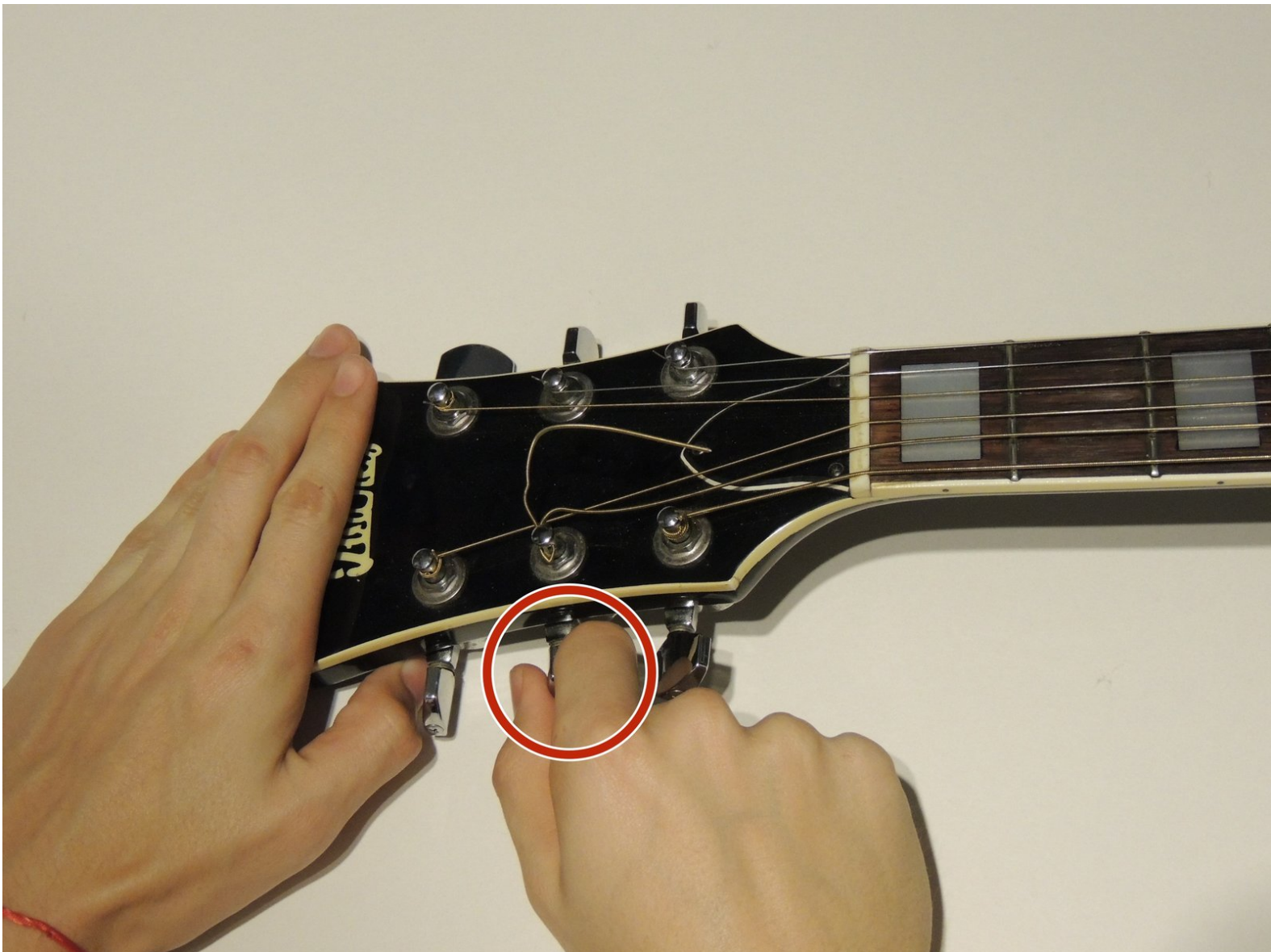




Ibanez V300 Guitar Strings Replacement

Replace an old or broken string to make your guitar sound like it used to.

Written By: Kevin Petri



INTRODUCTION

A dull or broken string can greatly depreciate the sound that a guitar produces. This guide will give you a step by step procedure of how to remove and replace an old or broken string.



TOOLS:

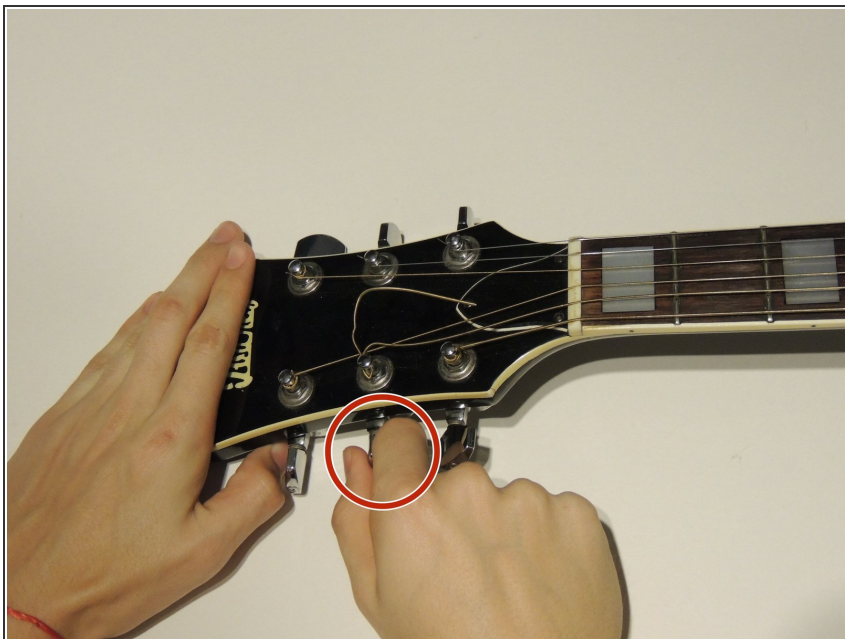
- [Guitar string winder and cutter](#) (1)



PARTS:

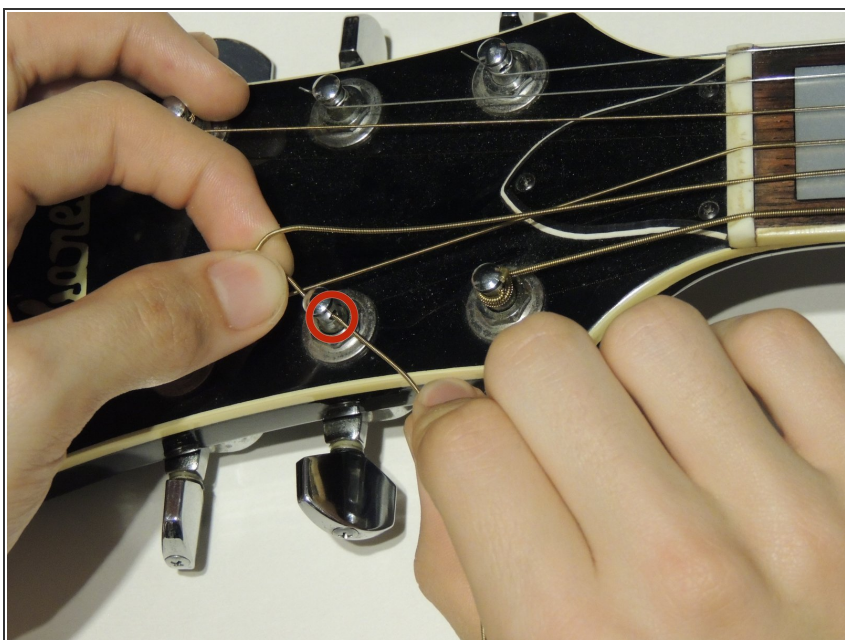
- [Replacement guitar strings](#) (1)

Step 1 — Loosening the Old String



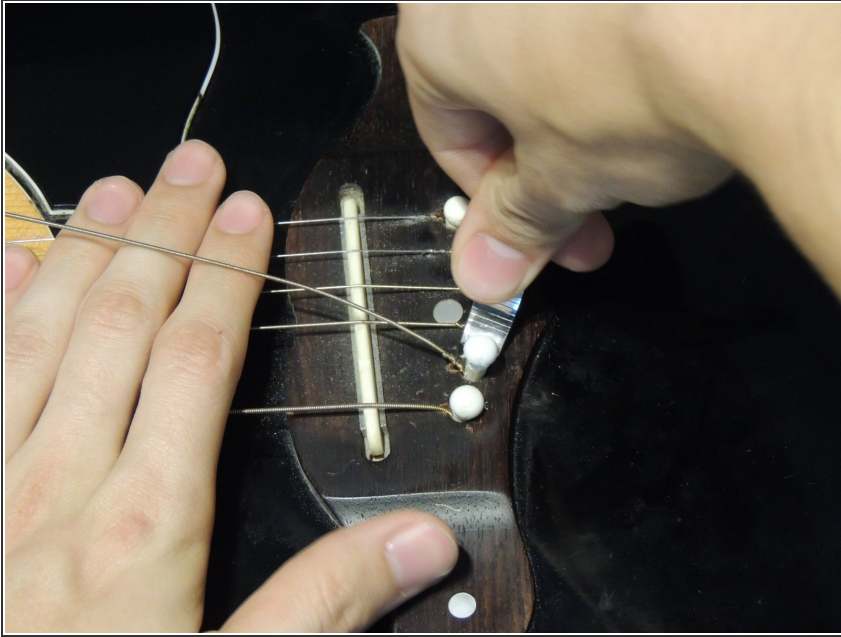
- Turn the peg in the direction of less resistance. The string should become more slacked or droopy.

Step 2 — Removing the Old String from the Head



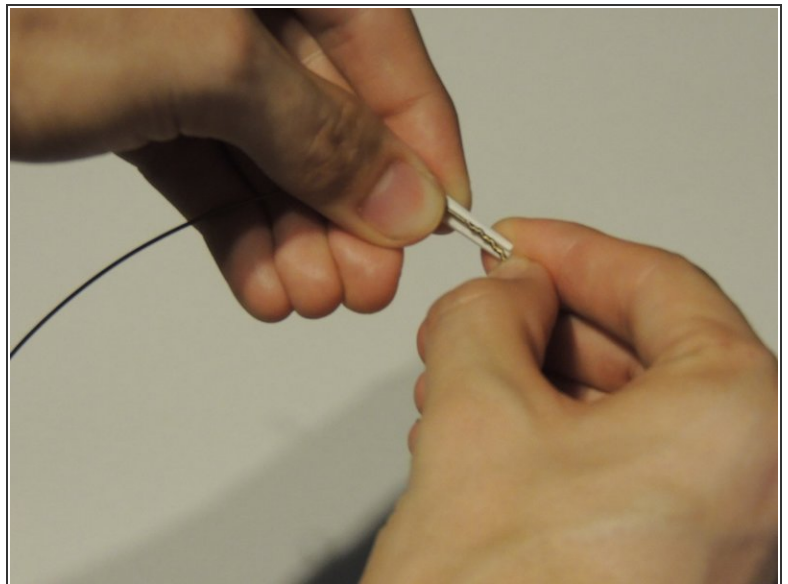
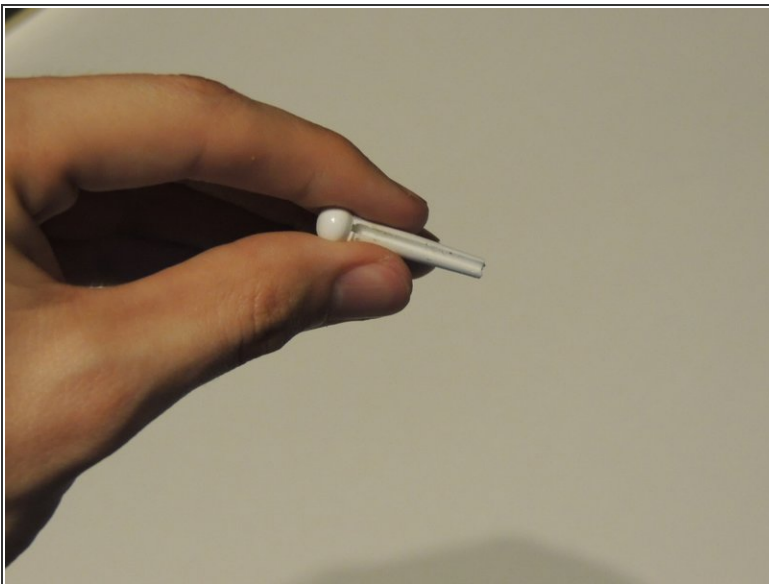
- When the string is very loose and is no longer coiled around the peg, slide it through the hole in the peg to remove it from the head.

Step 3 — Removing the Bridge Pin



- Using the all-in-one tool, slide the peg between the groove and gently lift up until the peg comes out.

Step 4 — Aligning the String With the Bridge Pin



- With your new string, align the nut end with the groove in the bridge pin so that the nut is at the opposite side of the head of the pin.

Step 5 — Replacing the Bridge Pin



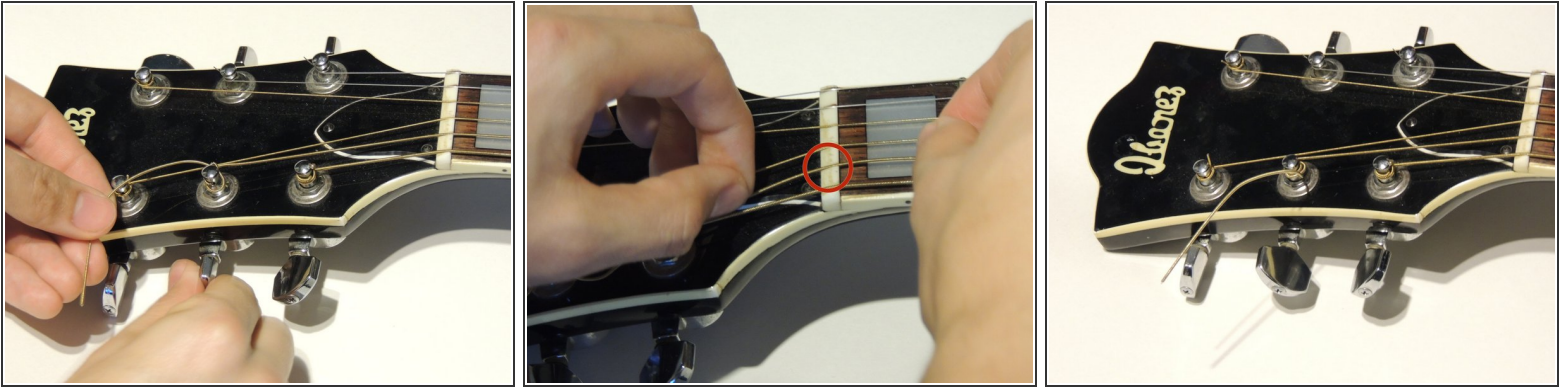
- Slide both the string and the bridge pin back into the hole,(make sure the groove is facing the string) and then when in place, apply a small amount of force with your thumb until you hear it click into place.

Step 6 — Replacing the New String at the Head



- Thread the end of the new string through the hole of the peg, but don't pull it all the way tight, leave the string loose on the neck.

Step 7 — Tightening the New String



- With the new string loose on the neck, tighten the peg so the string winds in the same direction as the other strings and wind it until it is tight and does not wobble. Make sure the string is aligned with the groove in the neck.

Step 8 — Removing Excess Length



- Using guitar string cutters, leave between a quarter inch to half of an inch of string so the excess string does not get in the way.

Follow the instructions for any broken or dull strings that need replacing.