



# Nest Learning Thermostat 2nd Generation

## Battery Replacement

Replacing your Nest's battery will ensure it always has power to spare.

Written By: Dustinluckenbill



## INTRODUCTION

Replacing the battery on your Nest couldn't be easier. Removing 4 screws gets you into the Nest's display and the battery comes right out. The only tools required are tweezers and a Phillips #0 screwdriver.



### TOOLS:

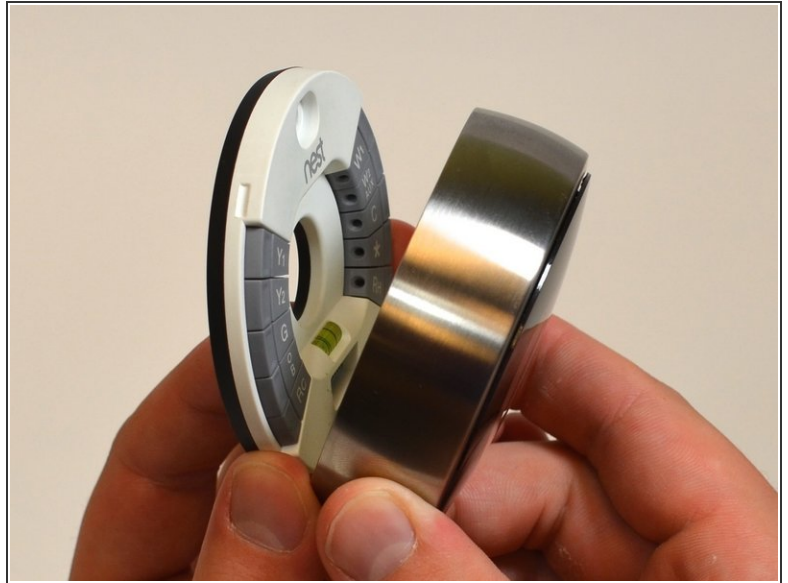
- [Phillips #0 Screwdriver](#) (1)
- [Tweezers](#) (1)



### PARTS:

- [Nest Thermostat \(2nd Gen\) Replacement Battery](#) (1)

## Step 1 — Removal from Wall



- Grasp the display's metal outer ring with your fingers and pull directly away from the wall.

## Step 2 — Open Display



- Turn the display over.
- Remove the four 6 mm screws from the back of the display using a Phillips #0 screwdriver.



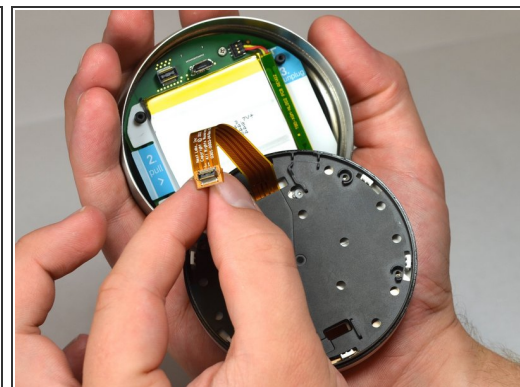
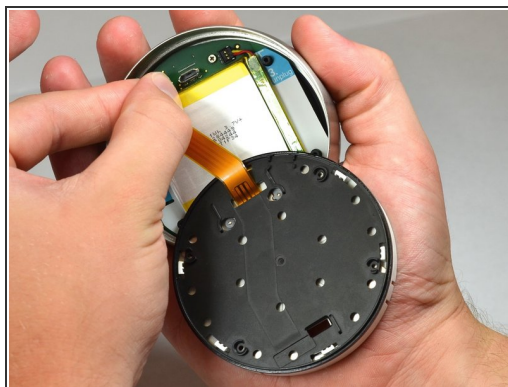
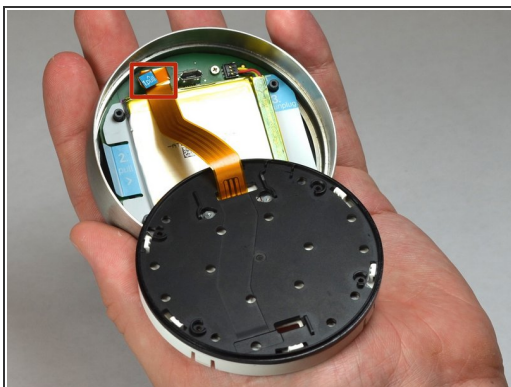
### Step 3 — Remove the back of the display



- Pinch the gray 20-pin connector with your fingers and pull directly away from the display.

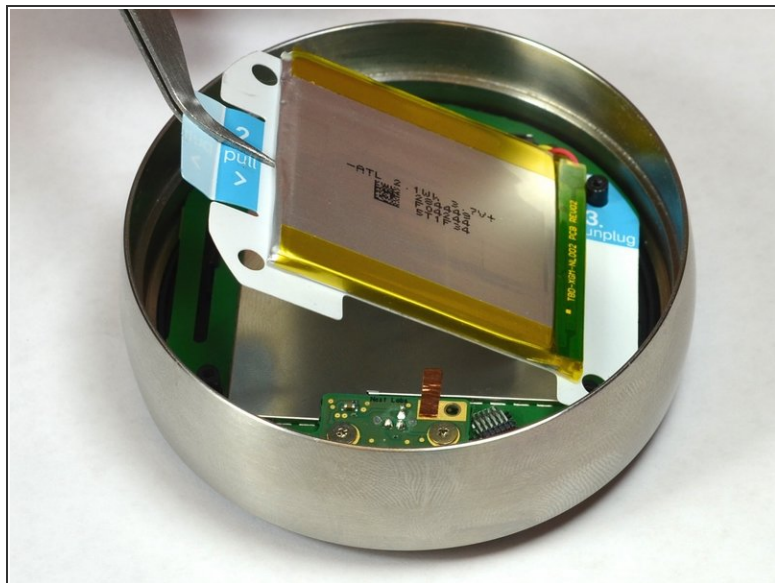
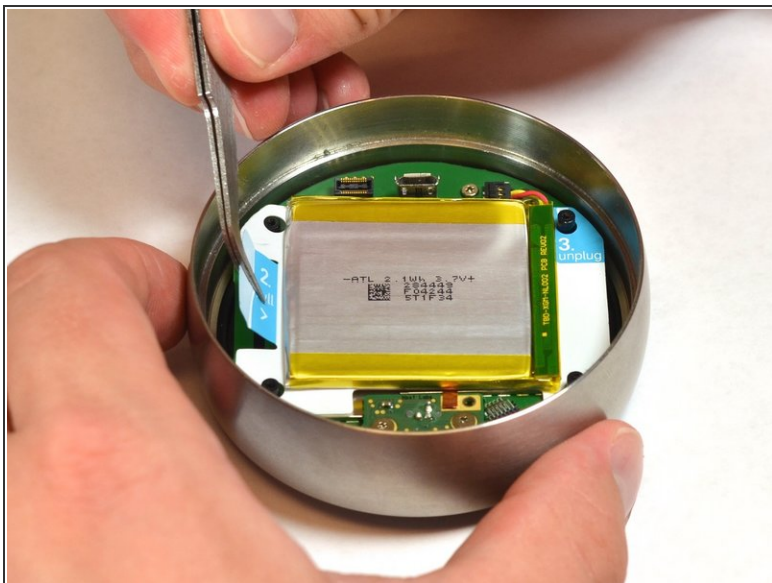
⚠ Do NOT pull too far as there is a ribbon on the back panel connecting the 20-pin connector to the display.

### Step 4 — Disconnect the base connection ribbon cable.




- Locate the blue pull tab at the end of the ribbon which says, "1. Pull".
- Grasp the tab with your fingers and pull directly away from the motherboard.

## Step 5 — Lift battery from the base



- Locate the blue tab which says, "2. Pull".
- Use tweezers to pull the battery up and away from the display.

 Do NOT pull too far, as the battery is still connected to the motherboard and must be unplugged.

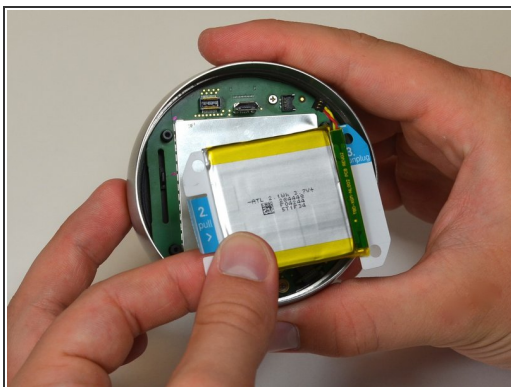


## Step 6 — Disconnect the battery from the motherboard



- Locate the blue tab which says "3 unplug".
- Grasp the battery with your fingers. Pull gently directly away from the display to unplug the battery from the motherboard.

## Step 7 — Remove battery from the display



- Grasp the battery with your fingers and pull directly away from motherboard to separate the battery from the display.

To reassemble your device, follow these instructions in reverse order.