



# Samsung SGH-A237 Camera Replacement

This guide will show the steps for replacing the camera of the Samsung SGH-A237.

Written By: Jonathon



---

## INTRODUCTION

This guide will instruct the user how to replace the camera of the Samsung SGH-A237 cell phone. Prior experience of replacing the camera is not necessary.

---

### TOOLS:

- [Tweezers](#) (1)
  - [Phillips #00 Screwdriver](#) (1)
  - [iFixit Opening Tools](#) (1)
-

## Step 1 — Camera



- Place the phone on a flat surface with the camera facing upwards.
- Have a designated space to keep track of each small part.

## Step 2



- Open the phone.
- Remove the two rubber soft screw covers below the viewing screen using a pair of tweezers.

### Step 3



- Loosen the screws under the soft screw covers using a Phillips #00 screwdriver.

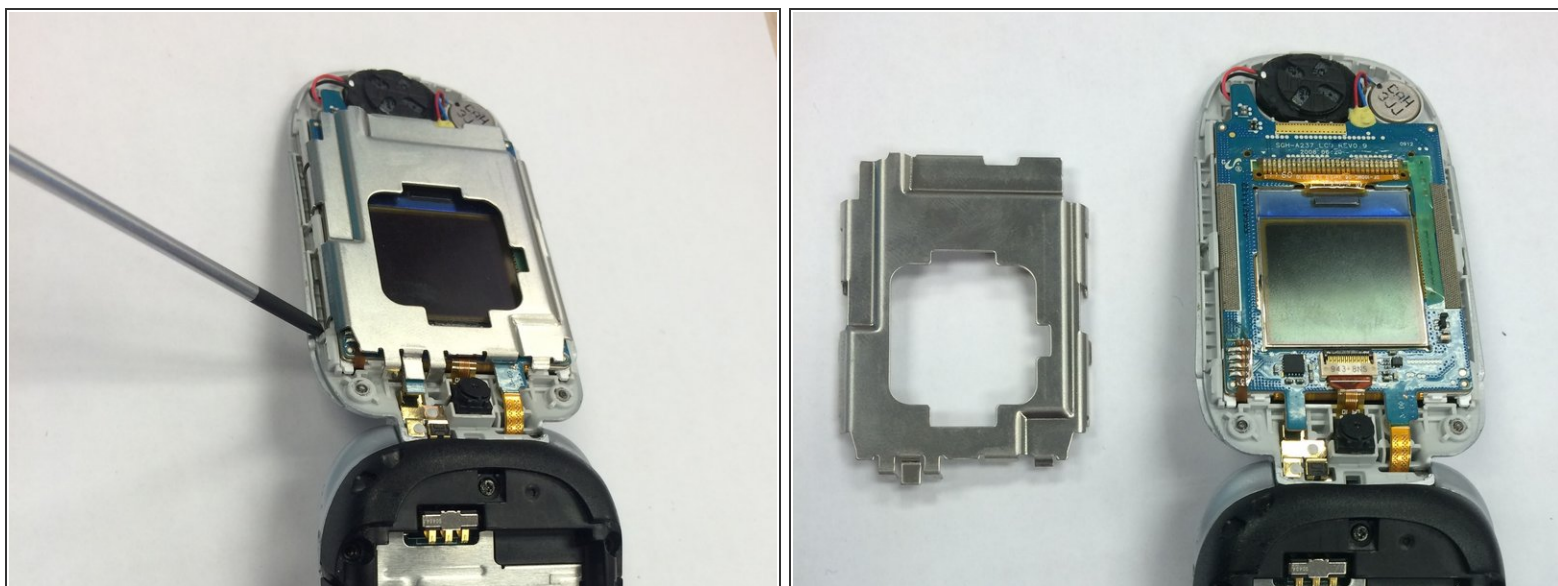
### Step 4



 Failure to utilize the specified tool may cause damage to the device.

- Locate the black cover plate on the back side of the viewing screen. It will show the AT&T and Samsung logos.
- Look on the right side of the phone for the crease in between the black back cover and the front silver cover of the viewing screen.
- Pry the cover plate off using a plastic opening tool.

## Step 5

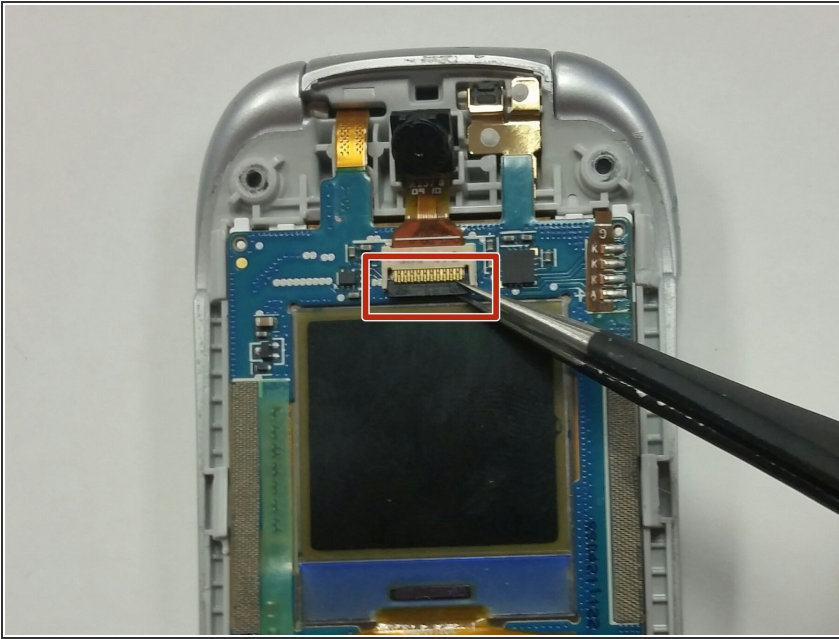


 Failure to utilize the specified tool may cause damage to the device.

- Identify the metal bracket that covers the internal body.
- Identify the metal tabs surrounding the metal bracket mentioned in the previous step.
- Remove the metal bracket using a small pick or a Phillips #00 screwdriver.
- Close the phone.

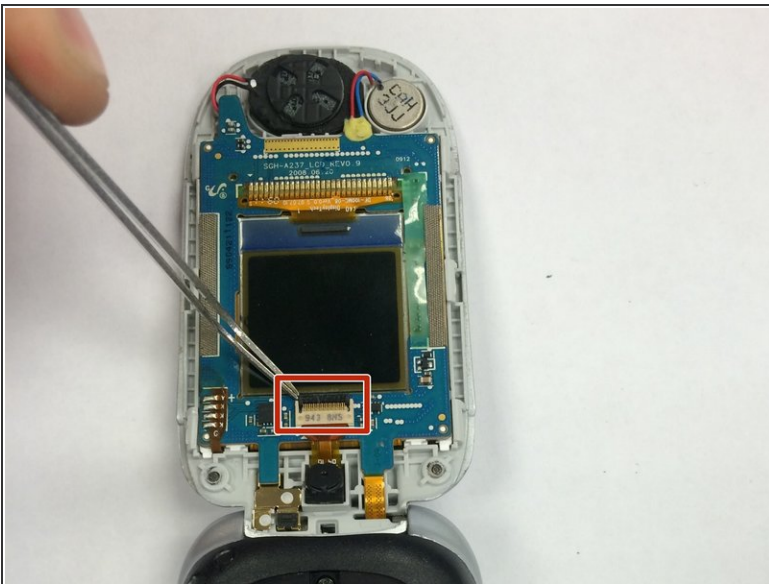



## Step 6



- Find the camera on the upper part of the phone. It will be displayed as a small black circle.
- Follow the copper ribbon connected to the camera downward to the black connection port.

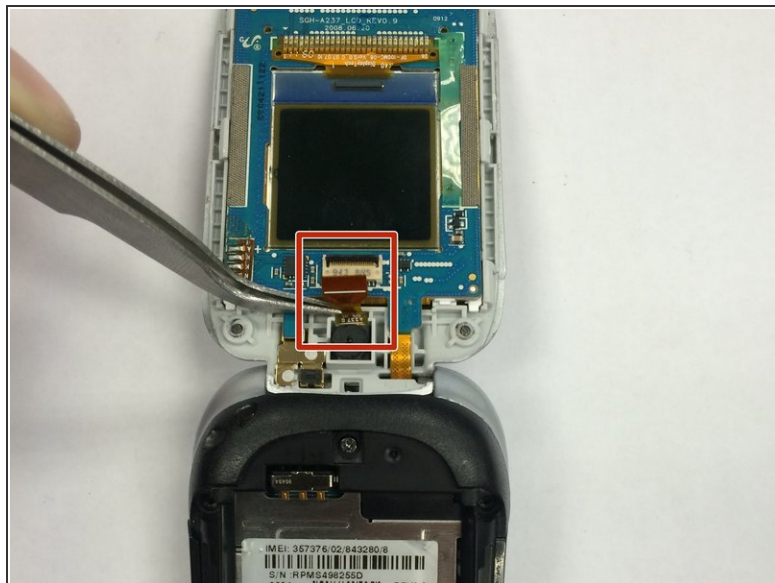
## Step 7



 Failure to utilize the specified tool in the proper way may cause damage to the device.

- Pry up the black connector using a pick. This should lock the black connector into an upward position, which will release the copper ribbon connected to the phone's camera.

## Step 8



- Gently grasp the copper ribbon attached to the camera using a pair of tweezers.
- Gently pull copper ribbon towards the camera. This should pull the copper ribbon out completely.

## Step 9



- Remove the camera.

To reassemble your device, follow these instructions in reverse order.