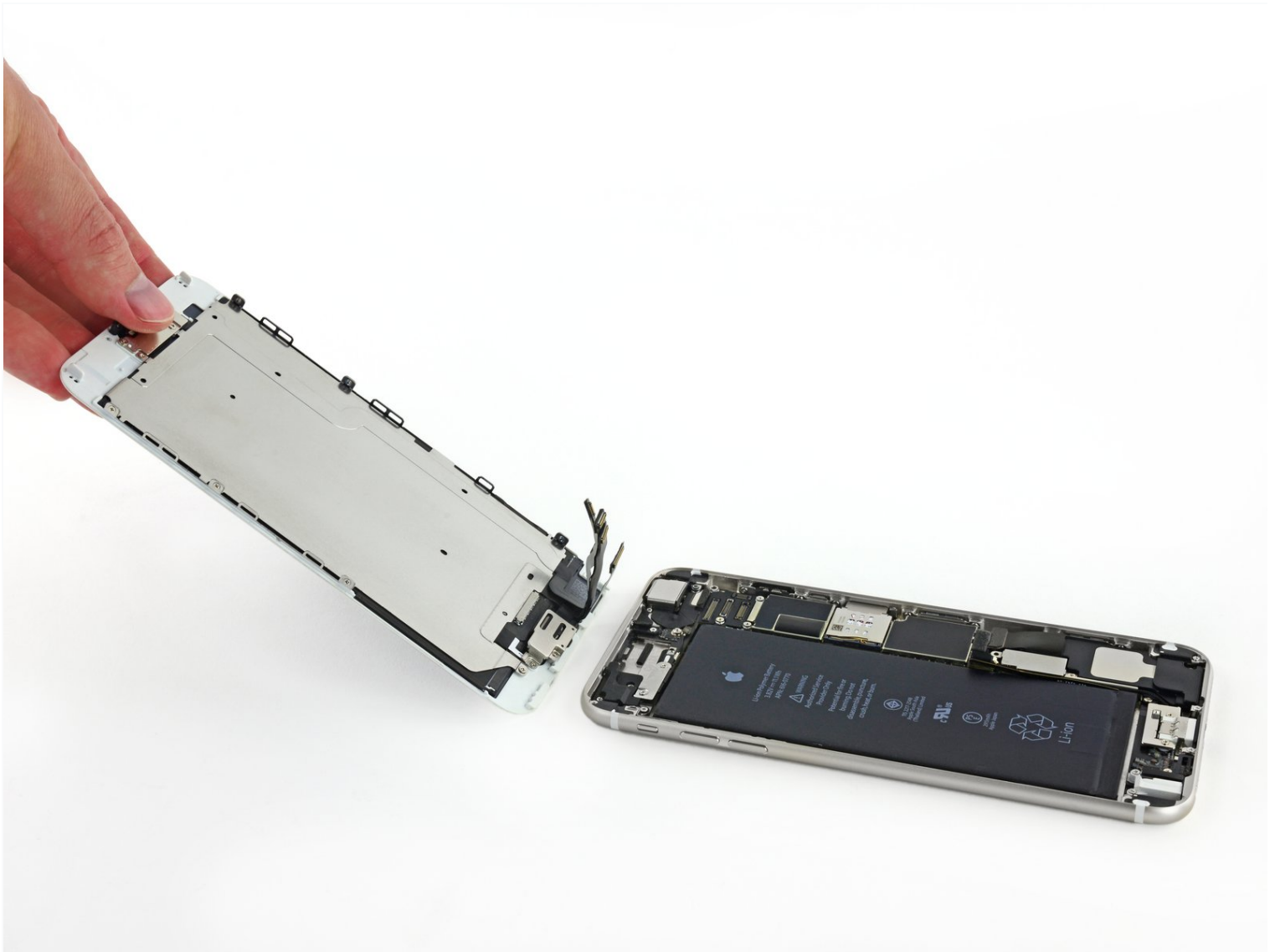




# iPhone 6 Plus Front Panel Assembly Replacement

Prereq only.

Written By: Walter Galan



# INTRODUCTION

Prereq only.

## TOOLS:

[P2 Pentalobe Screwdriver iPhone](#) (1)

[iSclack](#) (1)

[Suction Handle](#) (1)

[iFixit Opening Tool](#) (1)

[Tweezers](#) (1)

[Phillips #000 Screwdriver](#) (1)

## PARTS:

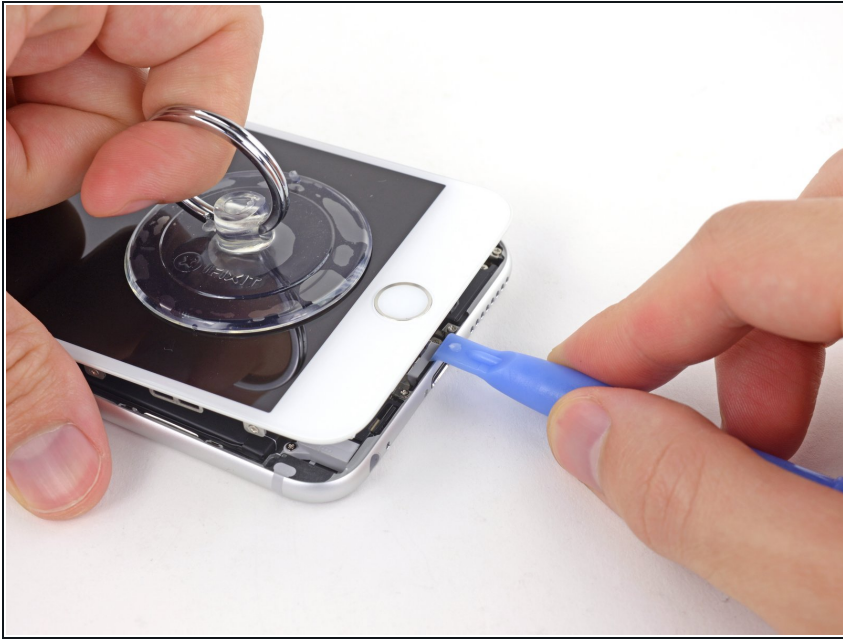
[iPhone 6 Plus LCD and Digitizer](#) (1)

### Step 1 — Front Panel Assembly



- Use a single suction cup to lift the front panel:
  - Press a suction cup onto the screen, just above the home button.
- ⓘ Be sure the cup is pressed securely onto the screen to get a tight seal.
- ⓘ If your display is badly cracked, [covering it with a layer of clear packing tape](#) may allow the suction cup to adhere. Alternatively, very strong tape may be used instead of the suction cup. If all else fails, you can superglue the suction cup to the broken screen.

## Step 2



- While holding the iPhone down with one hand, pull up on the suction cup to slightly separate the front panel assembly from the rear case.

**⚠ Take your time and apply firm, constant force. The display assembly is a much tighter fit than most devices.**

- Using a plastic opening tool, begin to gently pry the rear case down, away from the display assembly, while continuing to pull up with the suction cup.

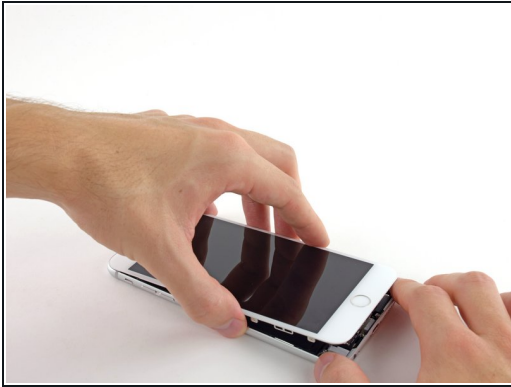
**i** There are several clips attaching the front panel assembly to the rear case, so you may need to use a combination of the suction cup and plastic opening tool to free the front panel assembly.

### Step 3



- Pull the plastic nub to release the vacuum seal on the suction cup.
- Remove the suction cup from the display assembly.

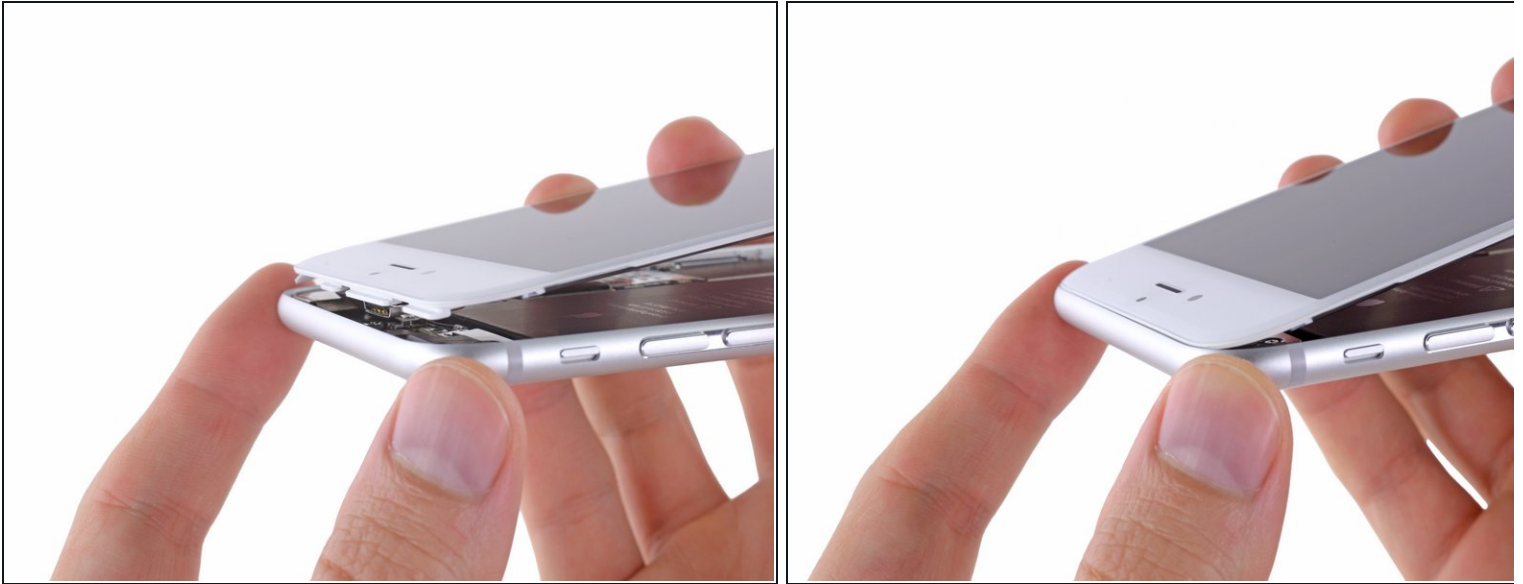
## Step 4



- Pull the home button end of the front panel assembly away from the rear case, using the top of the phone as a hinge.
  - Open the display to about a 90° angle, and lean it against something to keep it propped up while you're working on the phone.
    - Add a rubber band to keep the display securely in place while you work. This prevents undue strain on the display cables.
- ❗ In a pinch, you can use an unopened canned beverage to hold the display.



## Step 5



- ❗ Several clips along the top edge of the front panel form a partial hinge, allowing the front panel assembly to swing open like a book.
- 🔧 During reassembly, align the clips just below the top edge of the rear case. Then, slide the front panel upward until its top edge is flush with that of the rear case.

## Step 6



- Remove the following Phillips screws from the battery connector bracket:
  - One 2.3 mm screw
  - One 3.1 mm screw

## Step 7



- Remove the metal battery connector bracket from the iPhone.

## Step 8



- Use a clean fingernail or the edge of an opening tool to gently pry the battery connector up from its socket on the logic board.

**⚠ Take care to **only** pry up on the battery connector, and not the socket on the logic board. If you pry up on the logic board socket, you may break the connector entirely.**

## Step 9



- Remove the following Phillips screws securing the front panel assembly cable bracket:

- Three 1.2 mm screws

- One 1.5 mm screw

- One 2.9 mm screw

**⚠ Do not attempt to insert longer screws into the red marked screw holes. Doing so may result in irreparable damage to the logic board.**

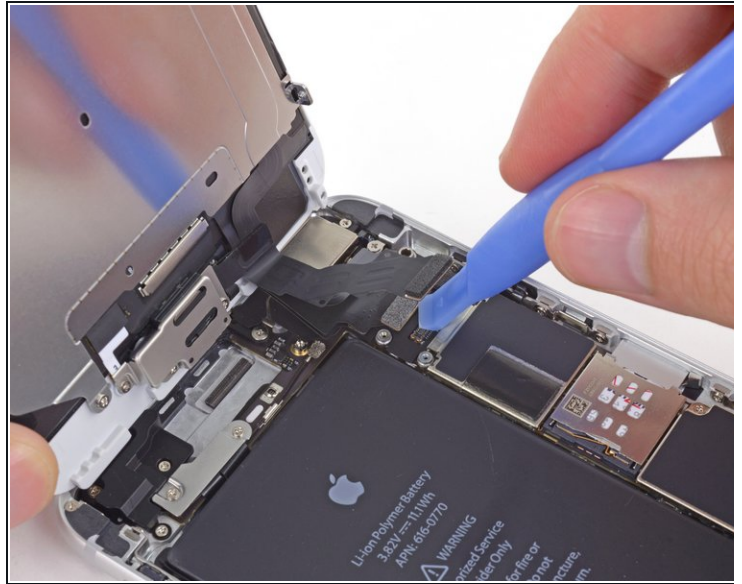
## Step 10



- Remove the front panel assembly cable bracket from the logic board.



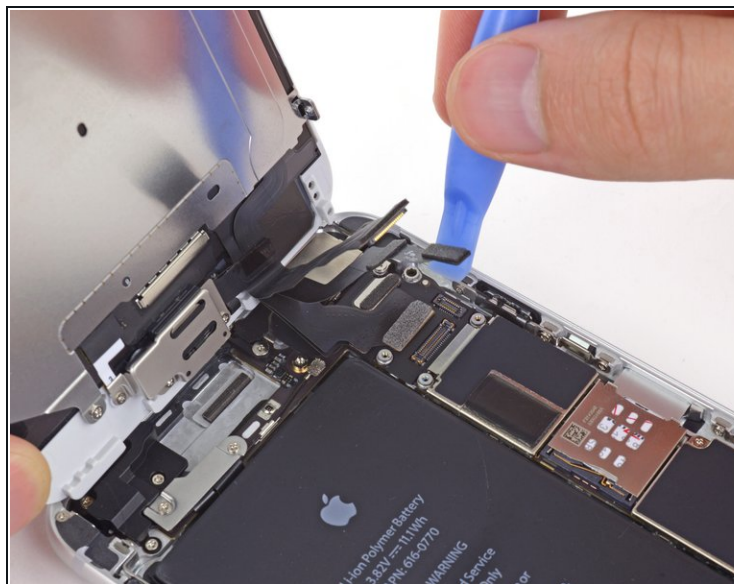
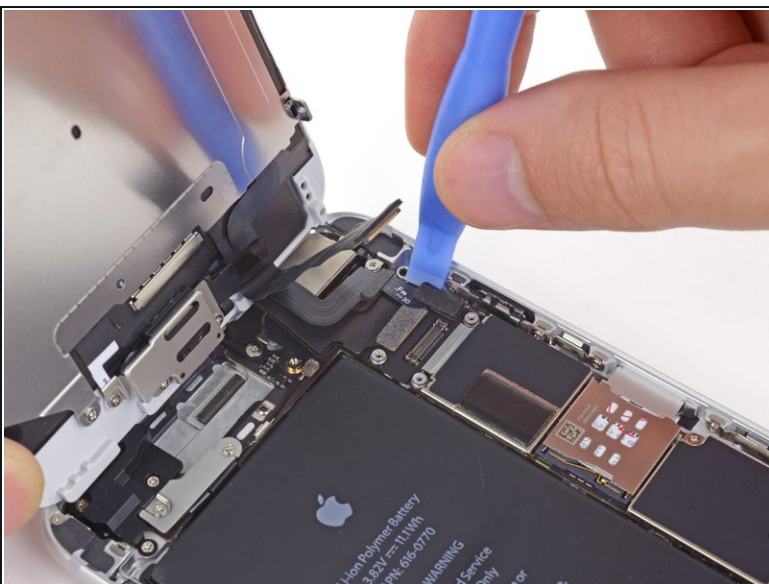
## Step 11



⚠ In the next four steps, take care to pry up **only** on the cable connectors, and not on their sockets on the logic board.

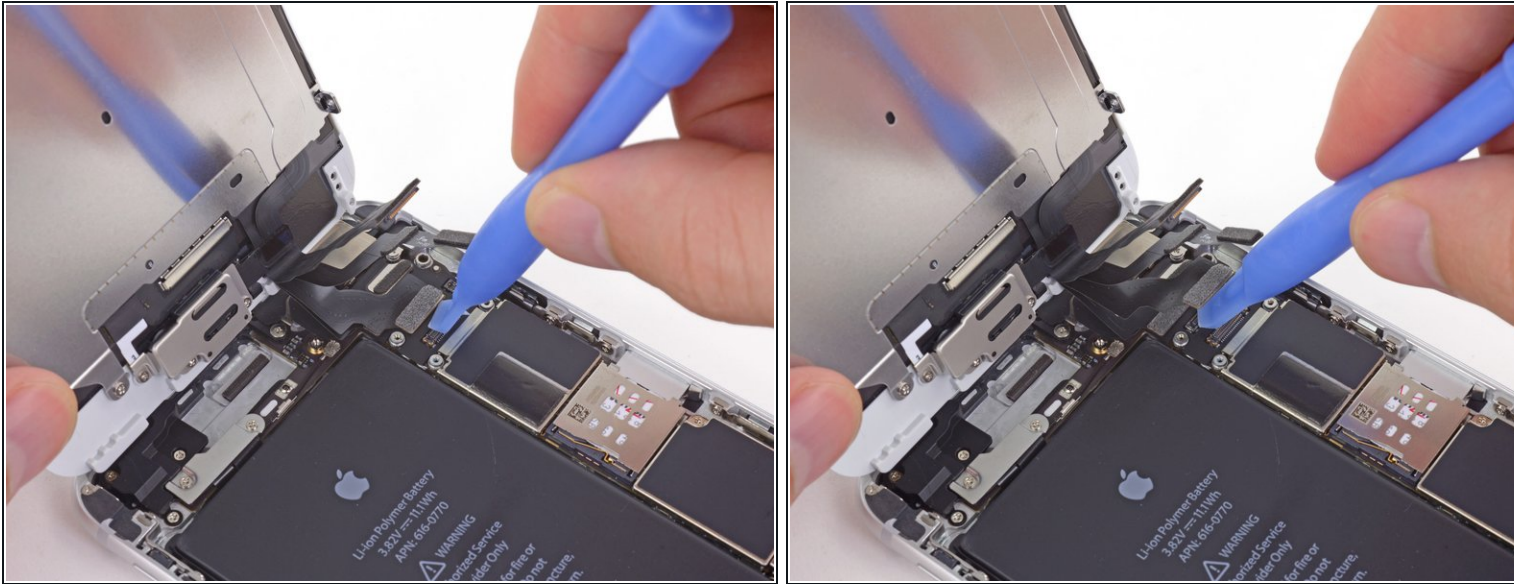
- While still supporting the front panel, use a fingernail or the edge of an opening tool to disconnect the front-facing camera and earpiece speaker connector.

## Step 12



- Disconnect the home button cable connector.

## Step 13

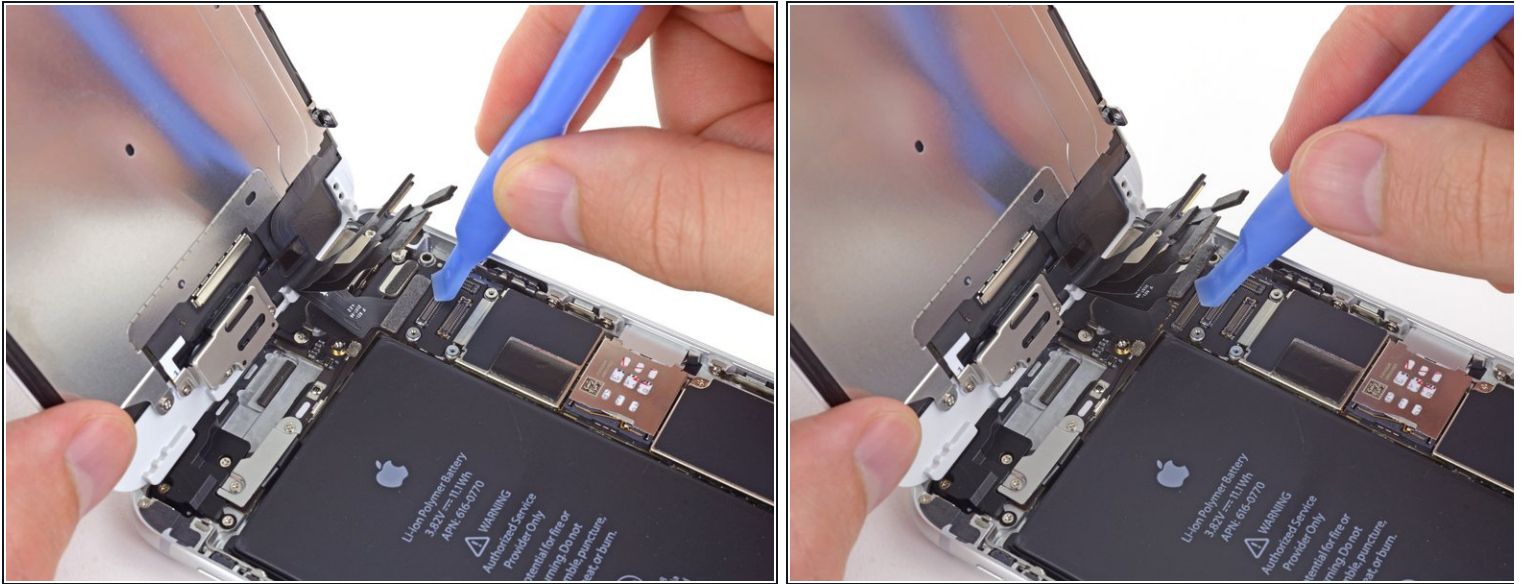


**⚠ Make sure the battery is disconnected before you disconnect or reconnect the cable in this step.**

- Use a plastic opening tool to disconnect the display data cable connector.
- ☑ When reassembling your phone, the display data cable may pop off the connector. This can result in white lines or a blank screen when powering your phone back on. If that happens, simply reconnect the cable and power cycle your phone. The best way to power cycle your phone is to [disconnect and reconnect the battery connector.](#)

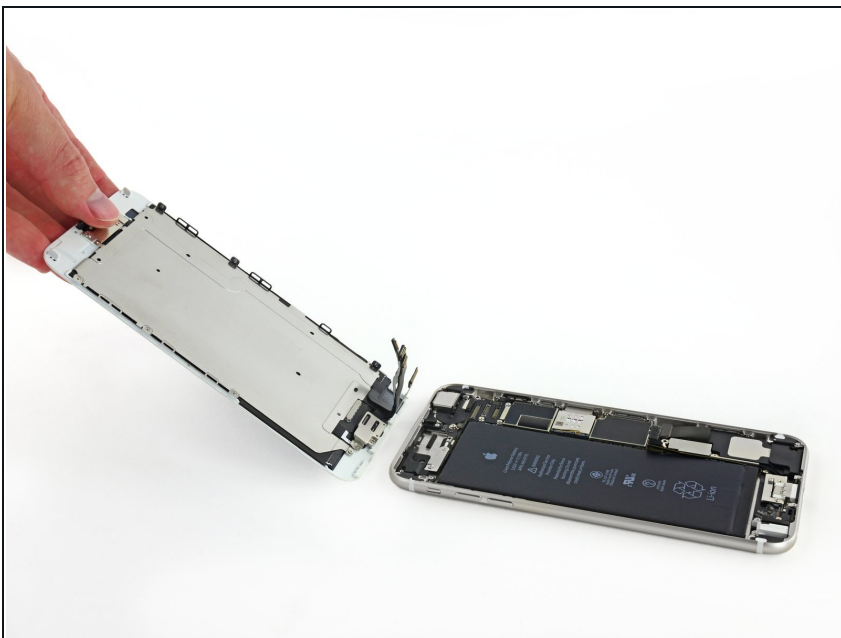


## Step 14



- Finally, disconnect the digitizer cable connector.
- ✦ When reconnecting the digitizer cable, **do not press the center of the connector**. Press one end of the connector, then press the opposite end. Pressing in the center of the connector can bend the component and cause digitizer damage.

## Step 15



- Remove the front panel assembly from the rear case.

---

To reassemble your device, follow these instructions in reverse order.