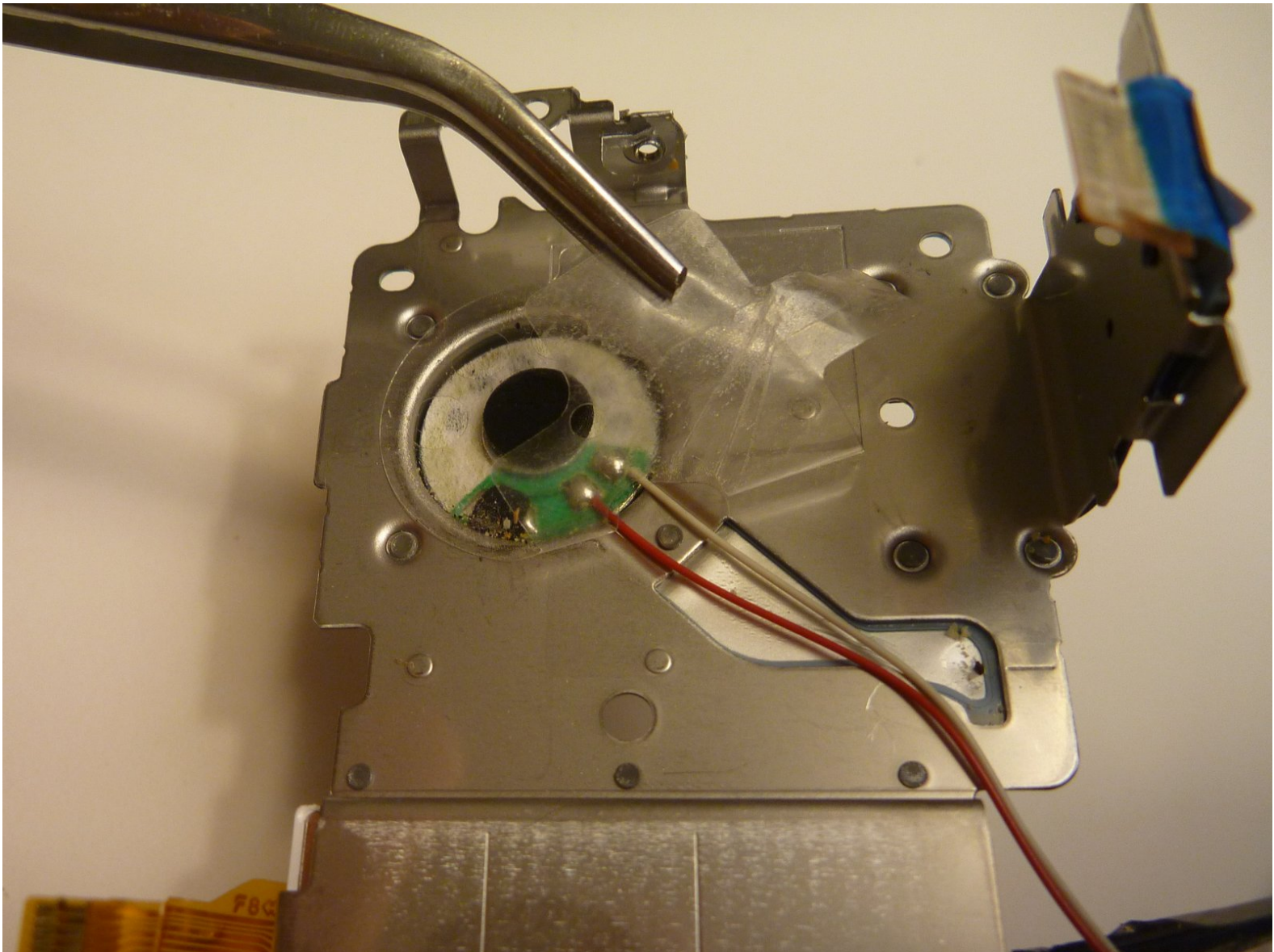




# Olympus D590 Speaker and Microphone Replacement

Step-by-step Instruction Guide Olympus D590...

Written By: Joshua



# INTRODUCTION

## Step-by-step Instruction Guide

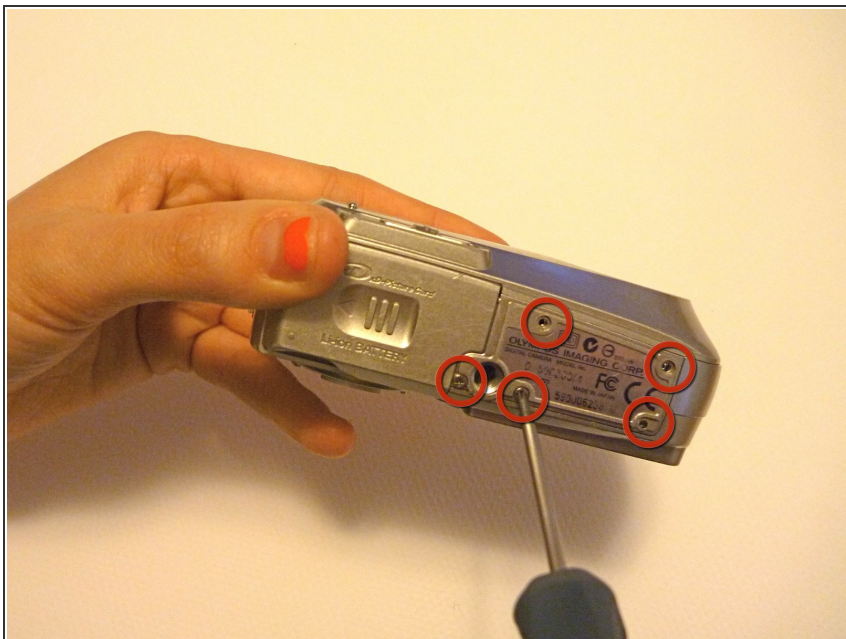
### Olympus D590 Camera Microphone and Speaker System Replacement

---

#### **TOOLS:**

- [Phillips #00 Screwdriver](#) (1)
  - [Flathead 3/32" or 2.5 mm Screwdriver](#) (1)
  - [Tweezers](#) (1)
-

## Step 1 — Face Plate



- Remove five baseplate screws using a Phillips #00 screwdriver.

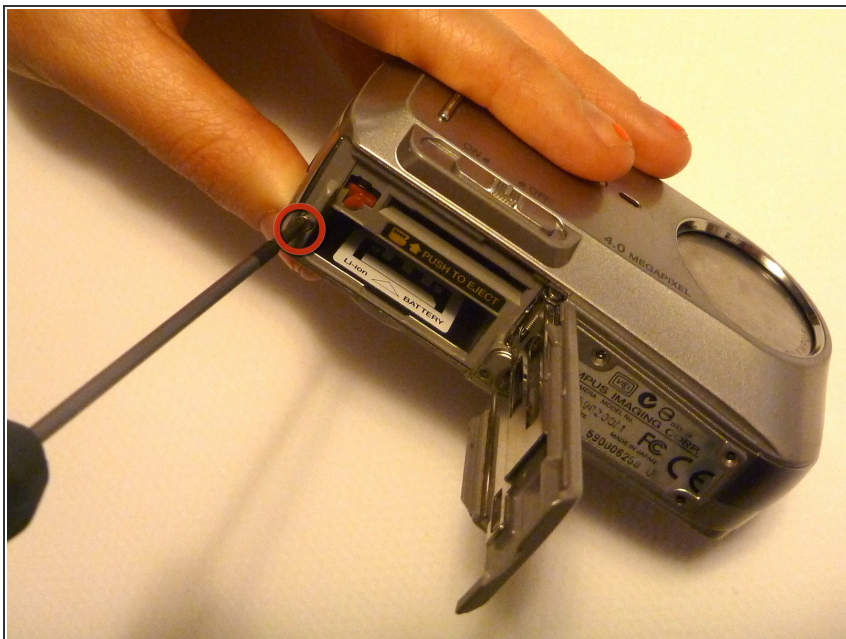
## Step 2



- Press and slide the battery cover retainer clip to the left. Use tweezers to lift the battery cover away.

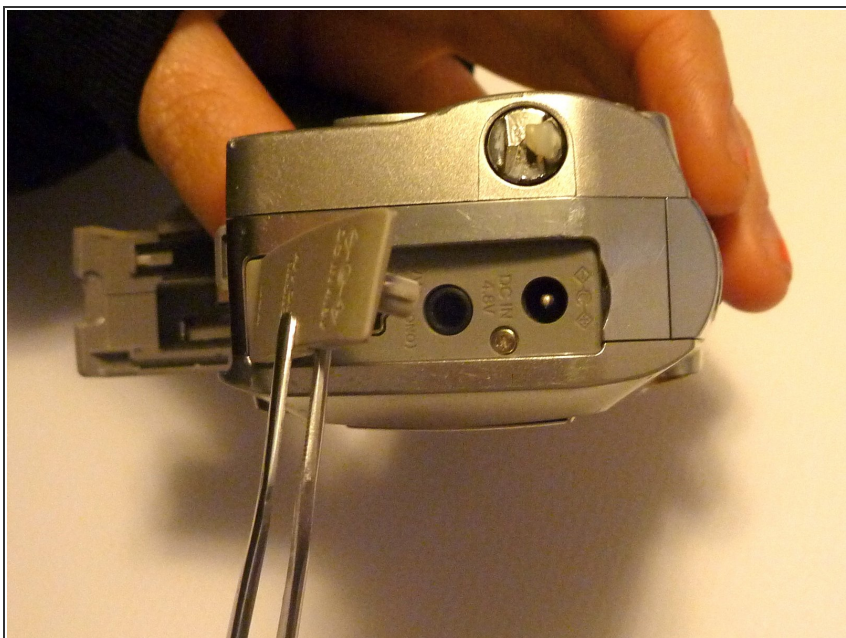


## Step 3



- Remove the single screw from the battery housing using a Phillips #00 screwdriver.

## Step 4



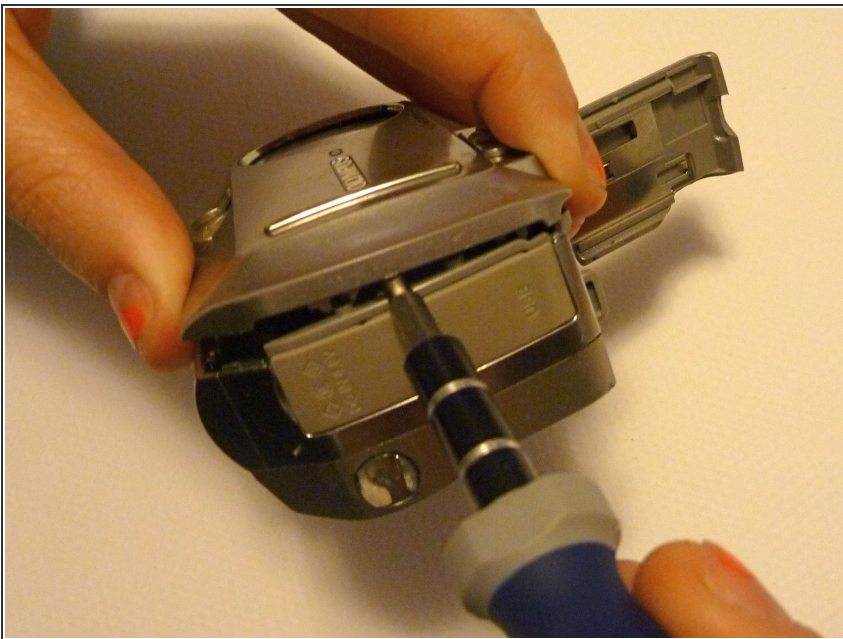
- Using tweezers, lift the rubber plate to expose the ports.

## Step 5



- Remove two screws from the ports using a Phillips #00 screwdriver.

## Step 6



- Use a spudger to pry the faceplate away from the rest of the camera.



## Step 7



- To avoid disconnection of the connector line to the motherboard, use caution when pulling faceplate away from camera case.

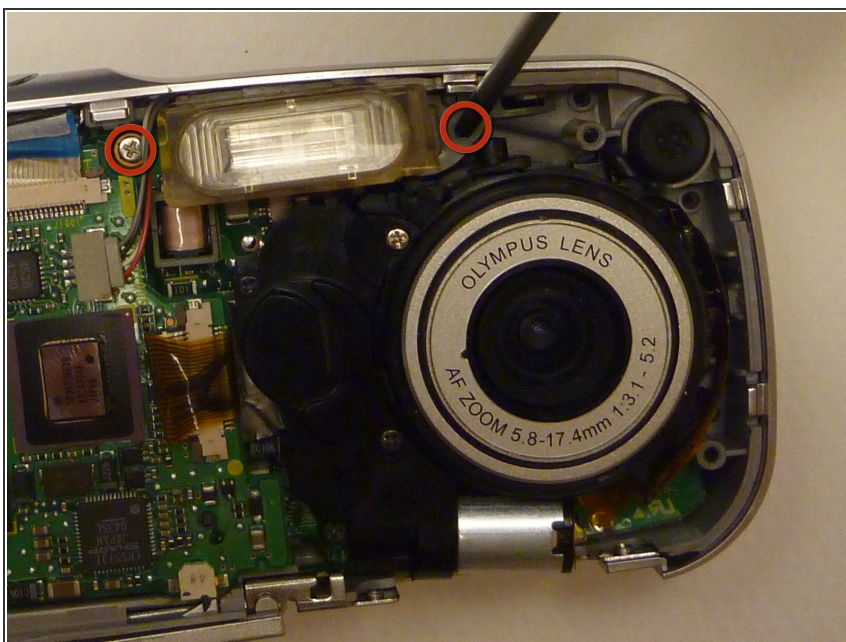
**⚠ Damage to the connector line will prevent the on/off power switch's operational function.**

## Step 8 — Backplate



- Using a Phillips #00 screwdriver, remove three screws fastened to the camera backplate edge.

## Step 9



- Using a Phillips #00 screwdriver, remove the two camera flash screws secured to either side of bulb housing component.

## Step 10



- Using an iFixit opening tool, pry the backplate from the camera internal housing component.

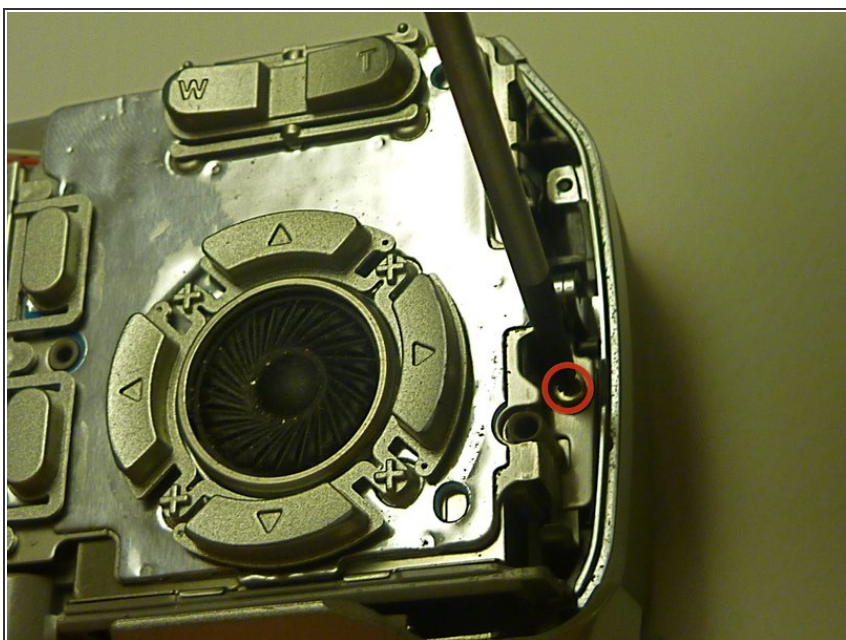


## Step 11



- Pull the backplate away from the camera internal housing component.

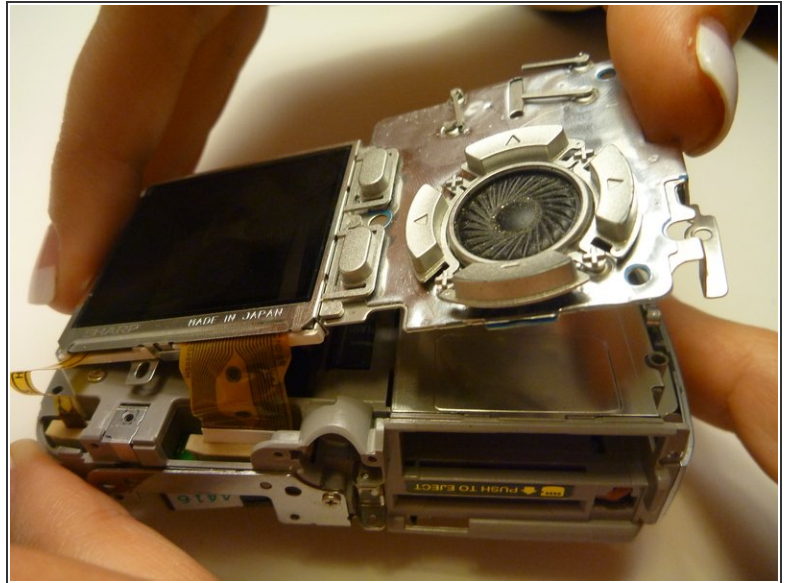
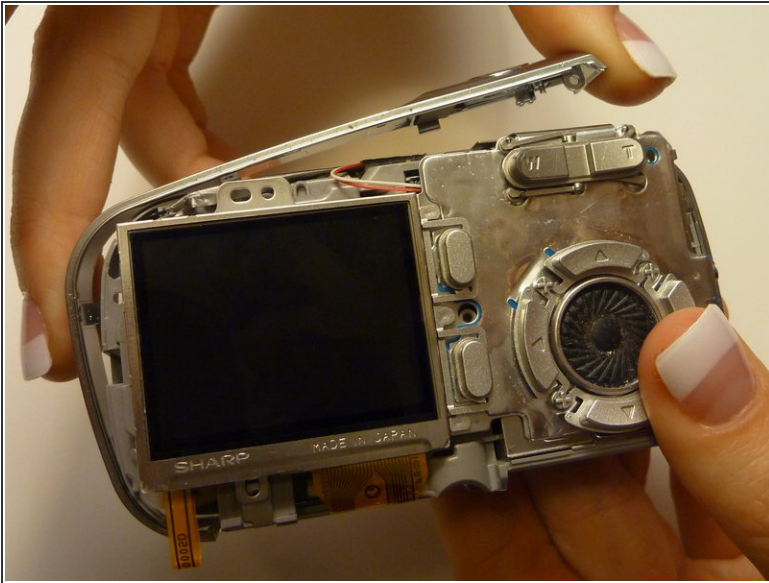
## Step 12 — LCD Screen



- Remove one screw Phillips #00 from the right side of the LCD screen camera internal housing component.

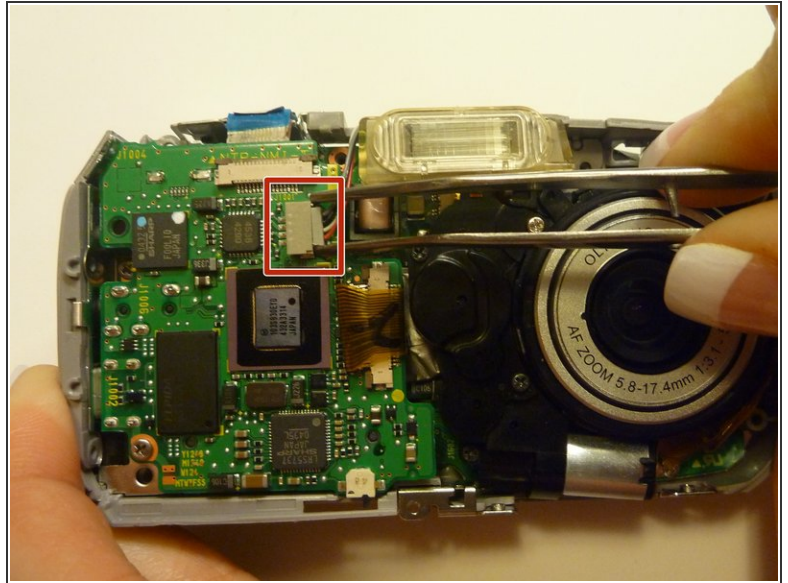
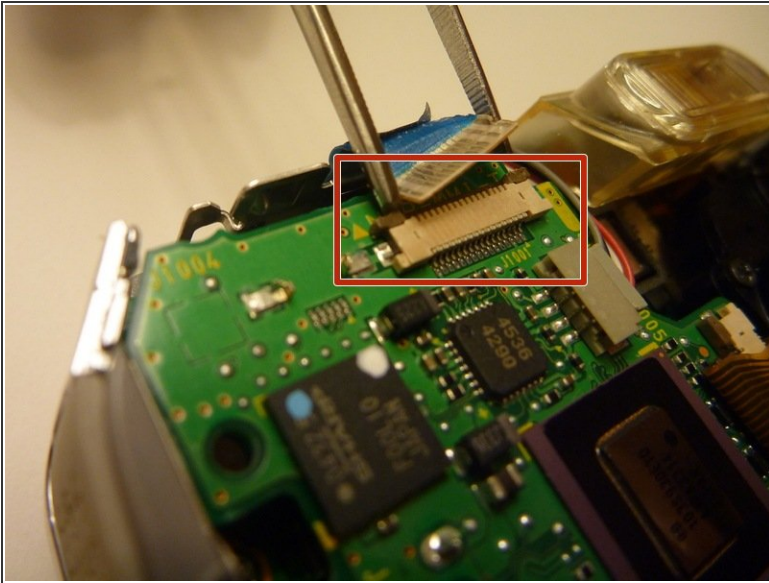


## Step 13



- To check that all screws are removed from the exterior side panel, gradually slide and lift no more than 3cm away from the camera internal component body.

## Step 14

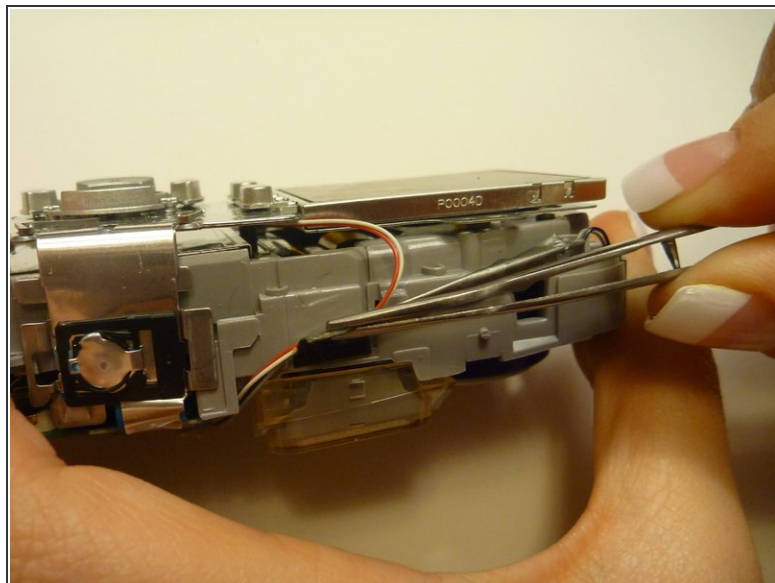
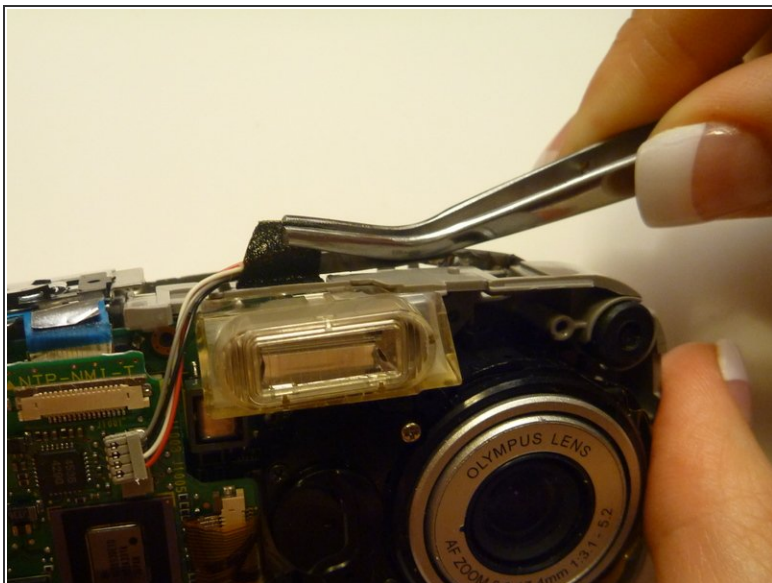


- View the front of the camera internal housing component.
- Using tweezers, detach the gray connector and blue wiring tape.

⚠ Be cautious to gently wiggle and pull blue wiring tape and gray wire connector during detachment.

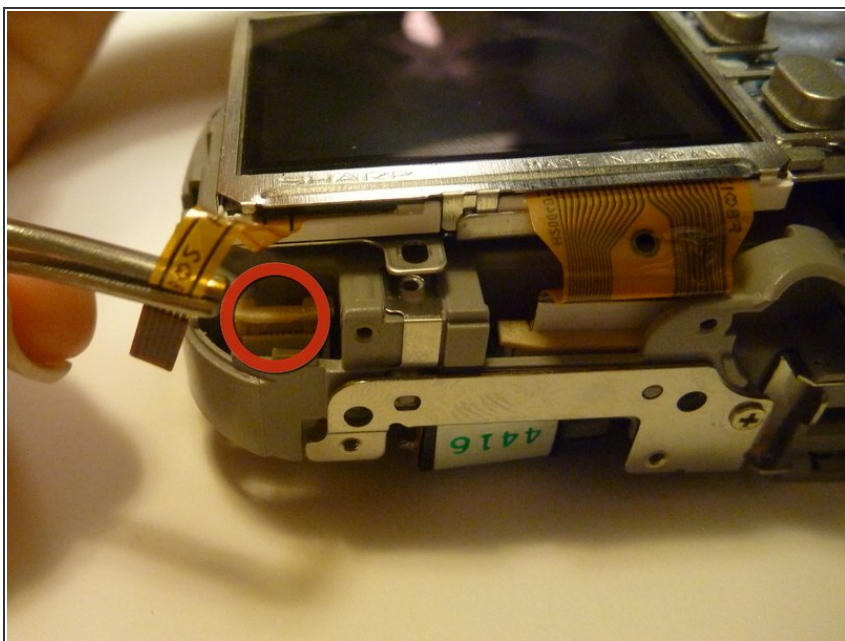


## Step 15



- View the top of the camera internal housing component.
- Using tweezers, gently lift the black tape exposing all connector wires.

## Step 16

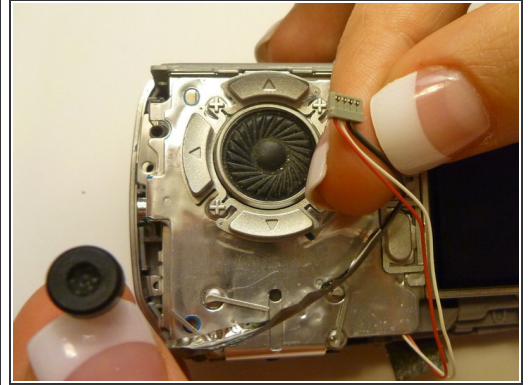
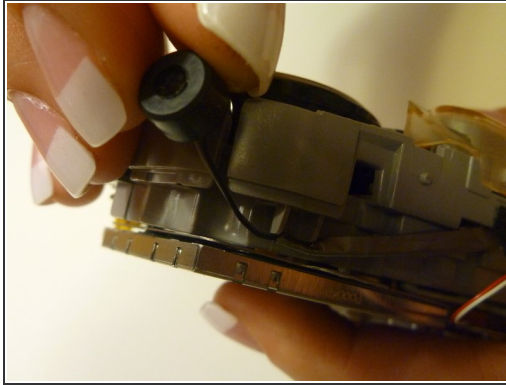
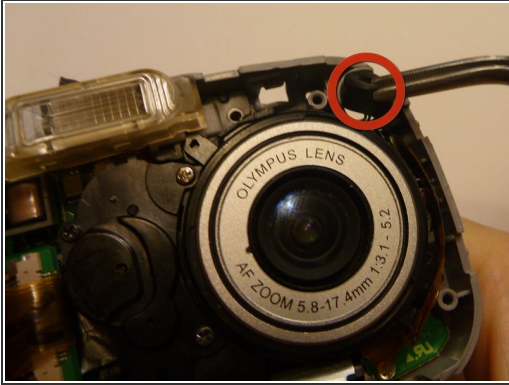


- View the bottom of the camera internal housing component.

**⚠ Caution: Keep yellow taped wire attached to the LCD screen.**

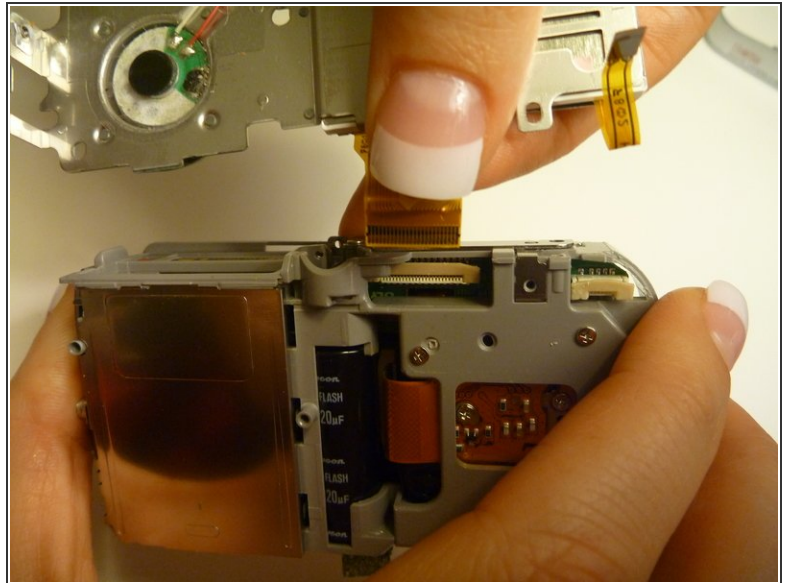
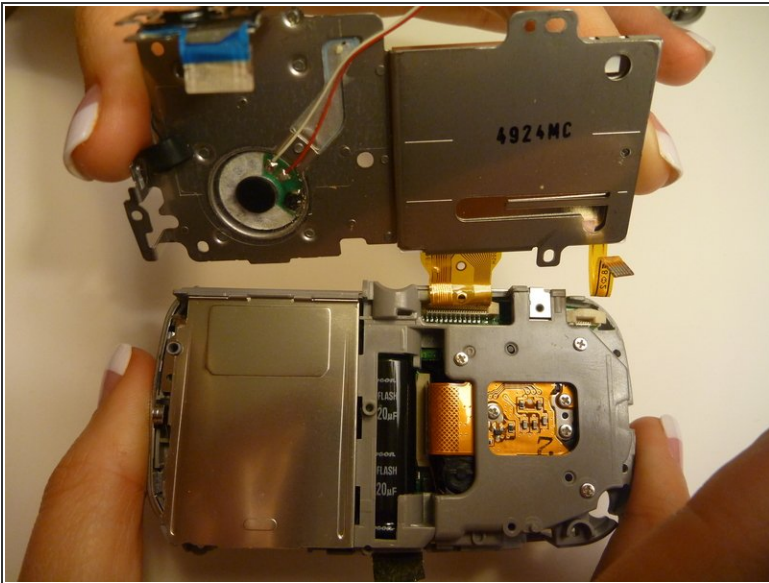
- Use tweezers to gently wiggle, pull, and detach tape from the surface of the camera internal housing component.

## Step 17



- View the front of the camera internal housing component.
- Using tweezers, gently lift the speaker, cautiously maneuvering the wire away from the side of the internal housing component toward the front of the camera internal housing component.

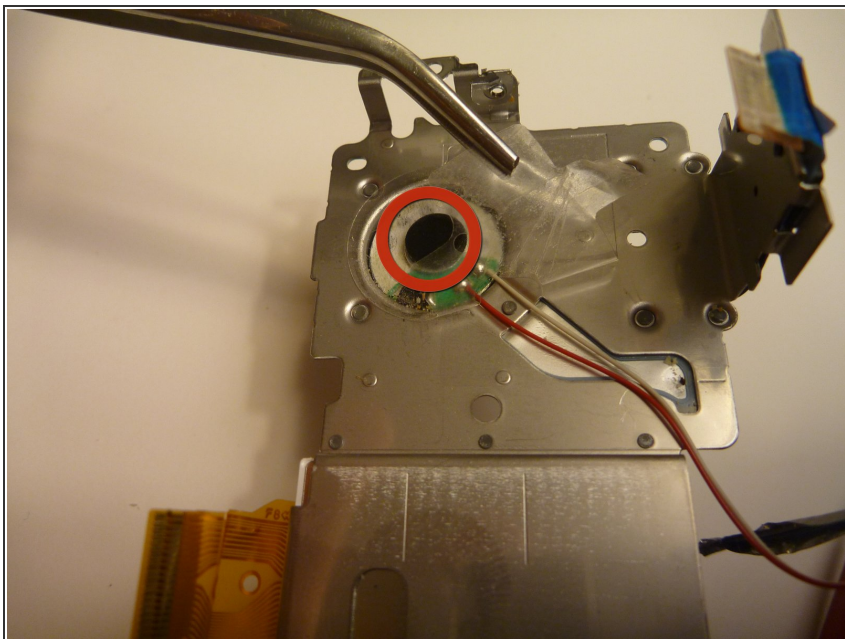
## Step 18



- Gently lift the LCD screen away from the camera internal housing component hinging the thick yellow wiring tape attached to the camera internal housing component.
- Use a forefinger and thumb to gently pull the thick yellow wiring tape out of the camera internal housing component.

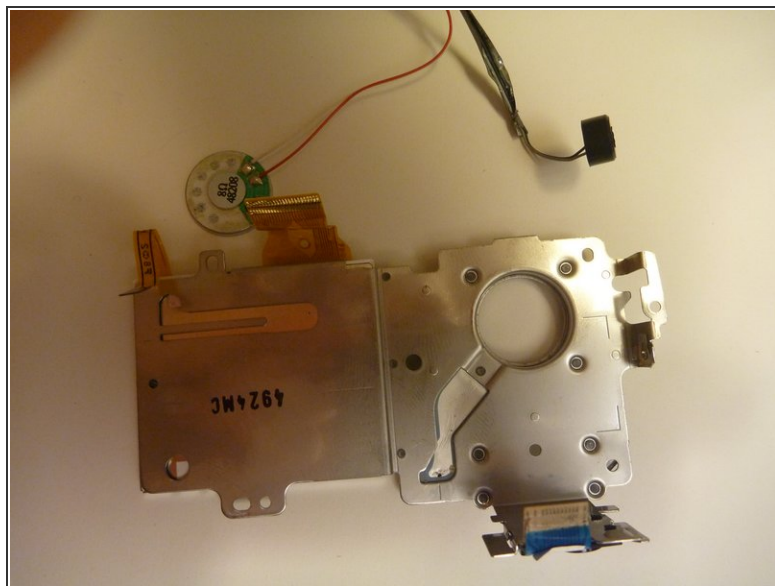
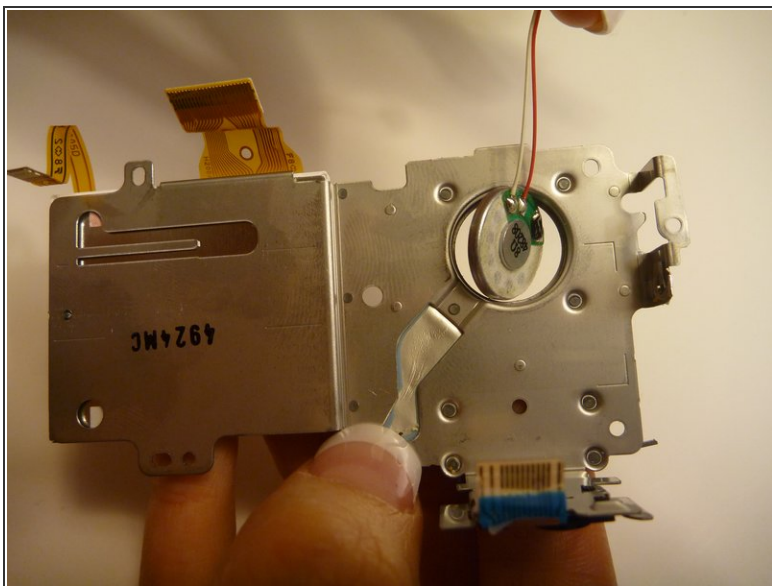


## Step 19 — Speaker and Microphone



- Using tweezers, gently lift and remove the clear tape covering the speaker.

## Step 20



- Gently lift the speaker from the LCD screen fitting.

To reassemble your device, follow these instructions in reverse order.