



# LG L1200 Outer LCD Screen Replacement

Written By: Joshua Herrmann



---

## INTRODUCTION

This guide will help you replace the outer LCD screen if broken or in need of repair.

---



### TOOLS:

- [iFixit Opening Tools](#) (1)
  - [Spudger](#) (1)
  - [T6 Torx Screwdriver](#) (1)
-

## Step 1 — Inner LCD Screen



- ⚠ Make sure you remove the battery by lifting the tab on the back of the phone before opening the case.
- Flip open the phone and locate the four screw covers.

## Step 2



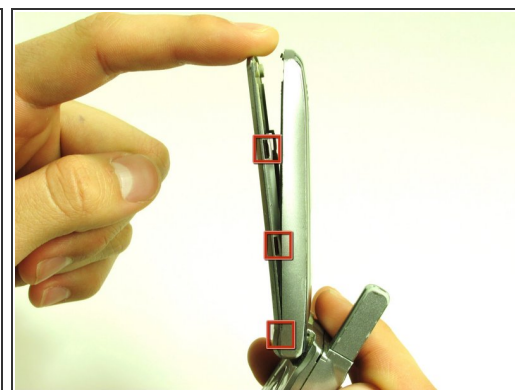
- Remove all four screw covers by using an iPod opening tool. They should come off relatively easy.

### Step 3



- Using a T6 Torx screwdriver, remove all four screws.

### Step 4



- Once the screws are removed, use an iPod opening tool to separate the front cover from the inner screen cover.
- Run the iPod opening tool down both sides, disconnecting the tabs that hold the covers together.



## Step 5



- Pull the inner screen cover towards you and up in order to separate it from the front cover.

## Step 6



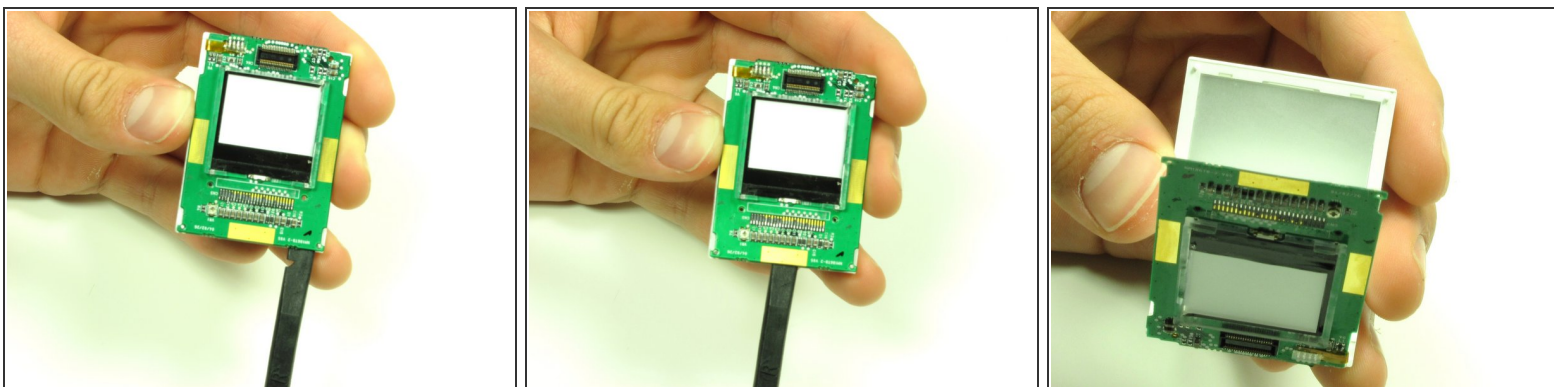
- Remove the tape from the bottom of the LCD screen.


## Step 7



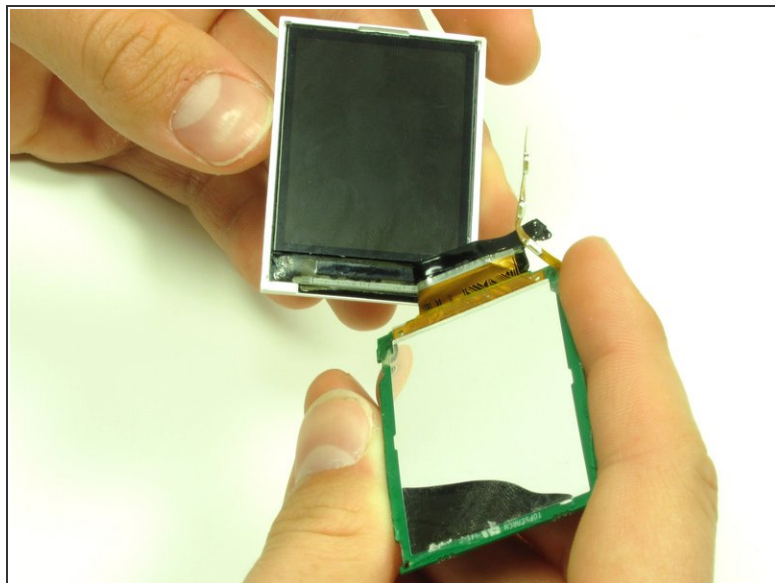
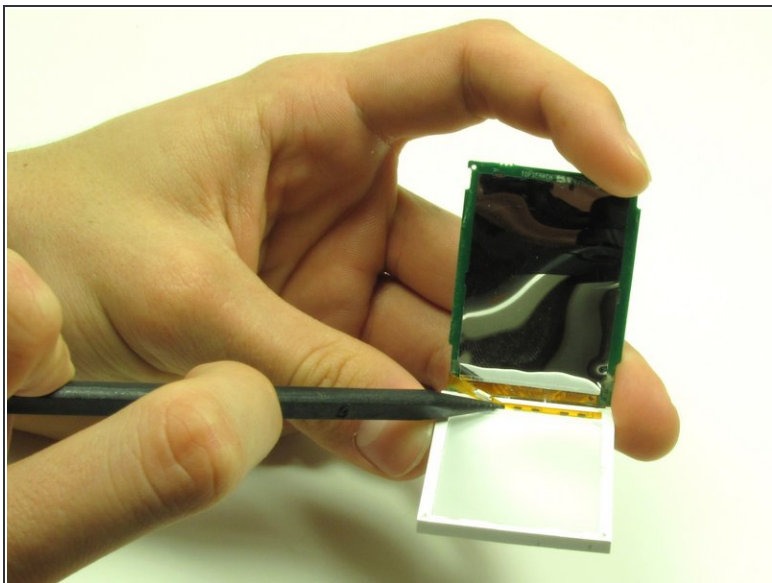
- Carefully lift the LCD screen and peel it from the gold ribbon. The sticky connection runs all the way around the LCD screen.

## Step 8



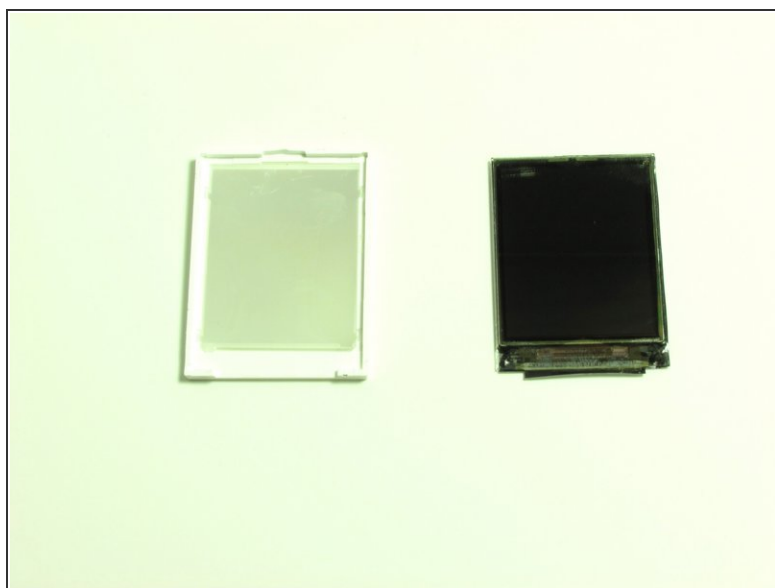
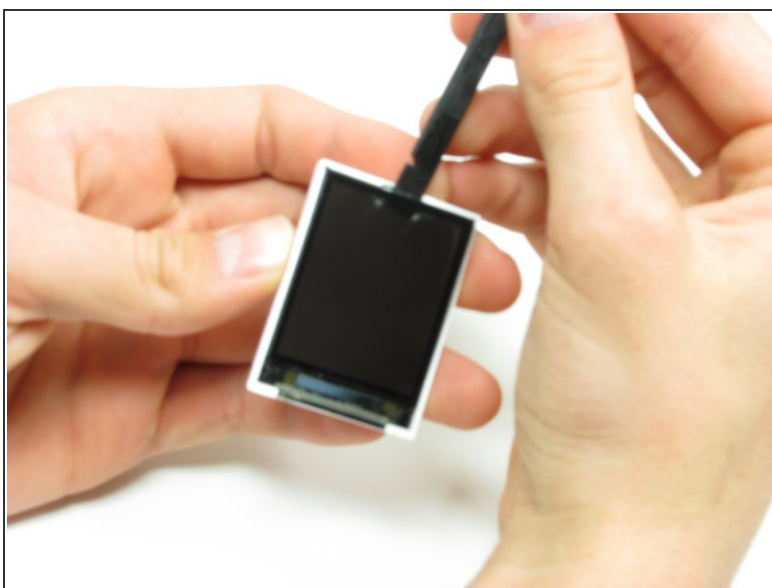
- Flip the screen over so that you can see the outer LCD screen and the circuit board.
  - Insert spudger in the bottom right corner.
  - Lift up and move the spudger across the bottom.
-  The third photo is rotated 180 degrees.

## Step 9



- Use the pointy side of the spudger to peel off the interior tape.
- Flip the assembly over and peel the circuit board from the screen.

## Step 10



- Use the spudger to remove the LCD screen from its backing.

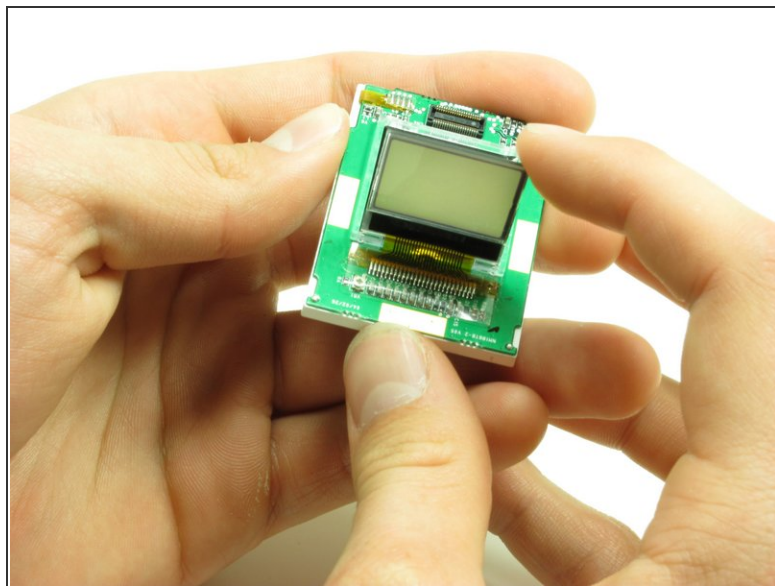
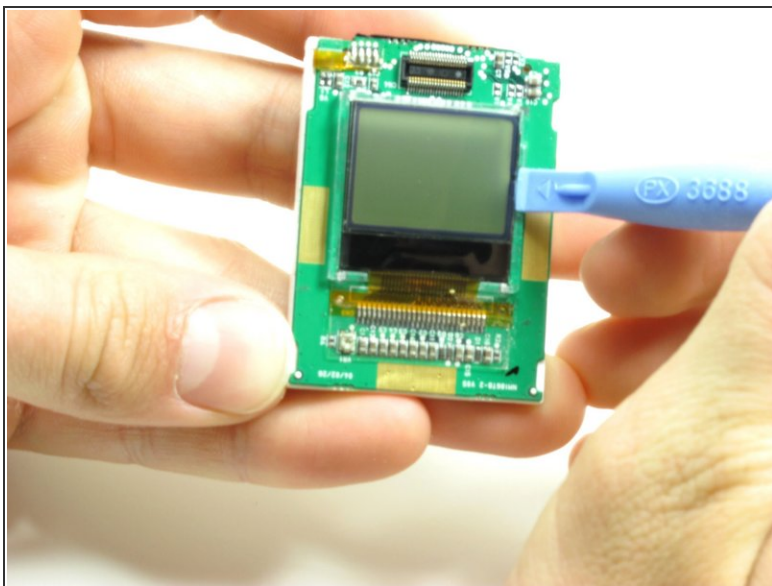


## Step 11 — Outer LCD Screen



- The outer LCD screen can be found on the circuit board, which is attached to the back of the inner LCD screen.

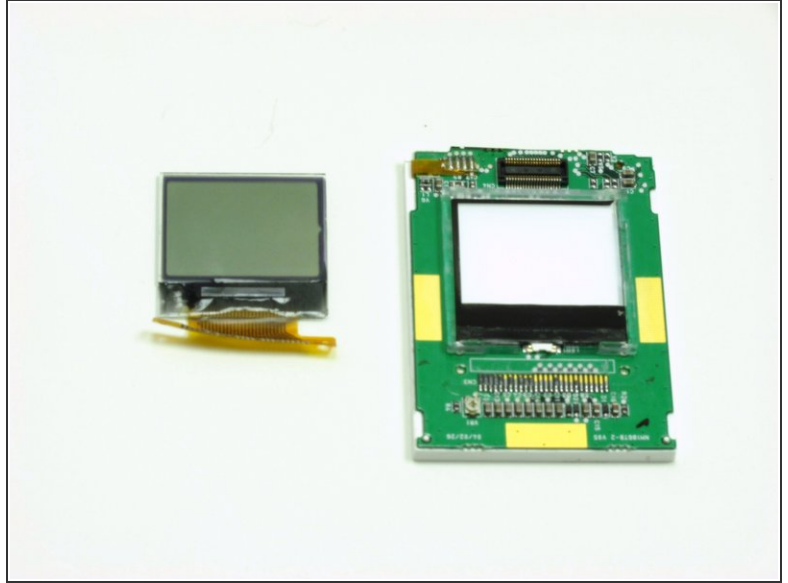
## Step 12



- Use an iPod opening tool to carefully lift the screen from its backing.
- Use your finger to pull the screen forward.



## Step 13



- Pull the screen and the tape ribbon off the circuit board.

To reassemble your device, follow these instructions in reverse order.