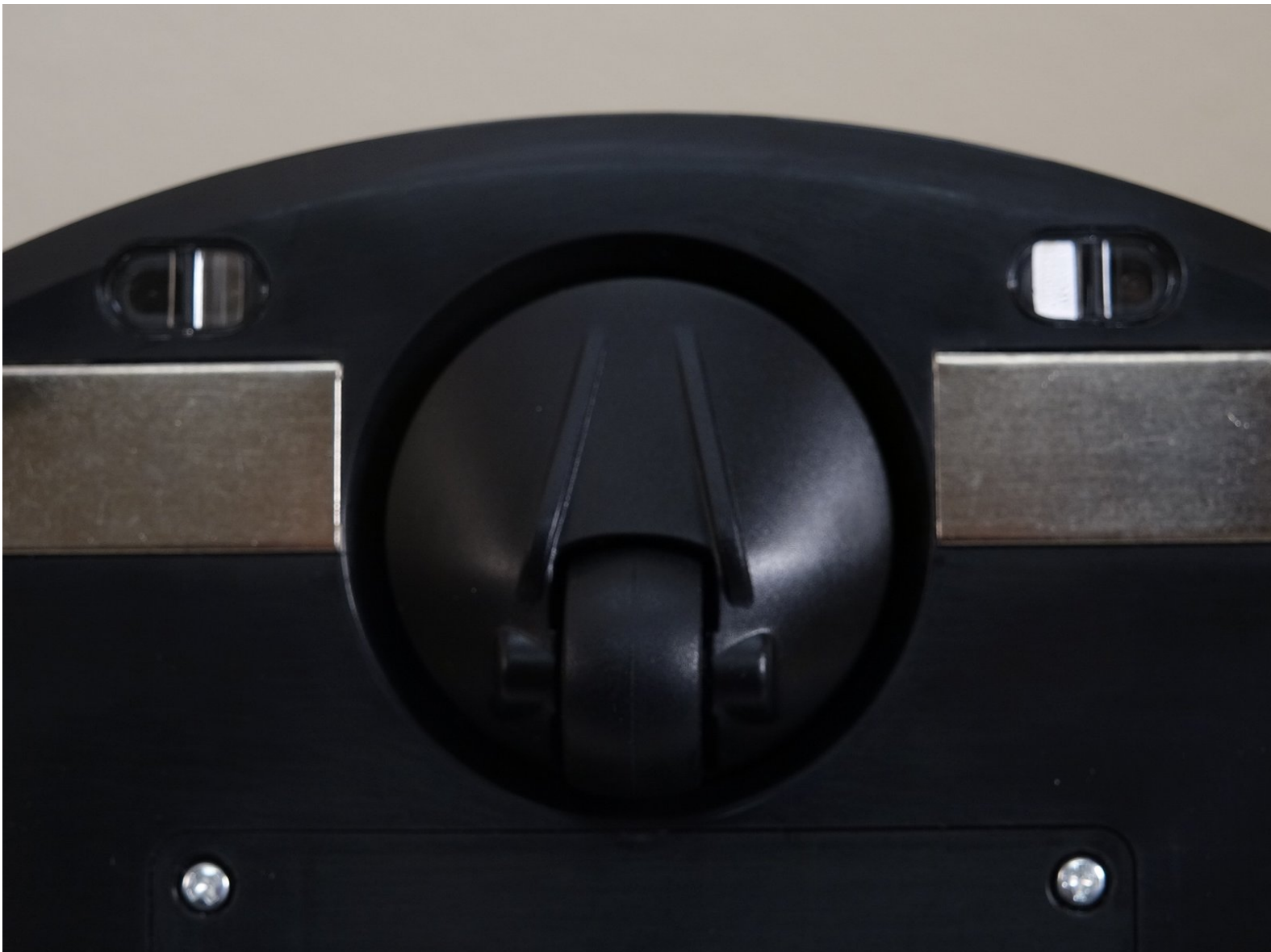




How to disassemble and clean bObsweep Robotic Vacuum Cleaner front wheel

Follow these steps to remove and deep clean every piece of bObsweep's front wheel. If you prefer video instructions, see <https://www.youtube.com/watch?v=qw7RhkN9mDw>

Written By: Tatiana



INTRODUCTION

Did you forget to clean Bob's front wheel as a part of your regular maintenance to the point that the wheel is completely stuck? Not to worry! Here is how to disassemble, clean, and reassemble Bobsweep's front wheel.



TOOLS:

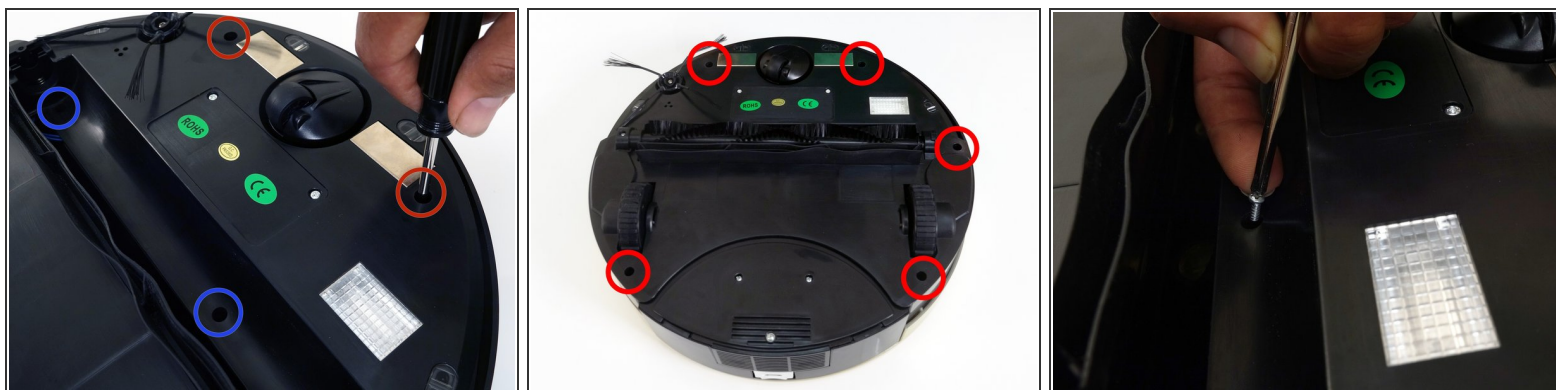
- [Phillips #2 Screwdriver](#) (1)
 - [bObsweep Cleaning Tool](#) (1)
 - [Compressed Air \(optional\)](#) (1)
-

Step 1 — bObsweep's cover



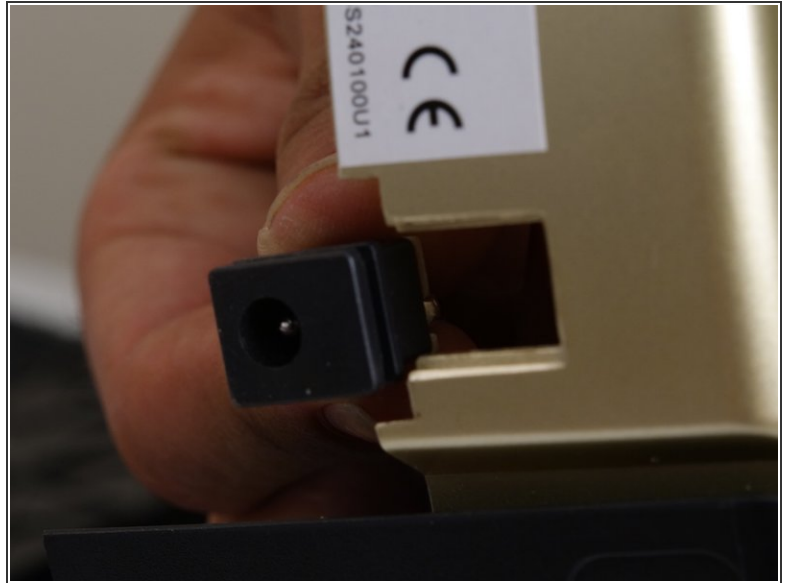
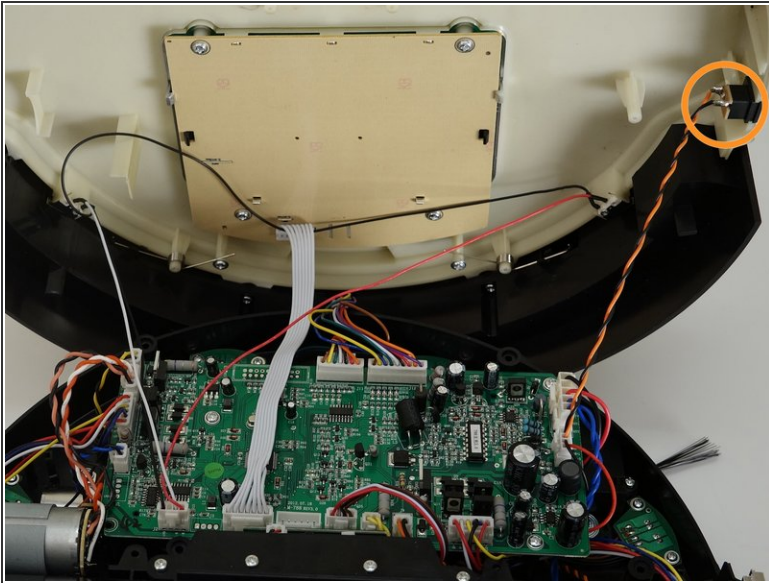
- Flip Bob over and remove the 7 screws around which hold the cover together.
 - Remove the main brush. Unscrew the holder, and lift the brush out. Reminder: Keep this screw separate from the others so you can use it later to reinstall.
- ⓘ Depending on your model, there may be only 6 screws installed on bObsweep.

Step 2



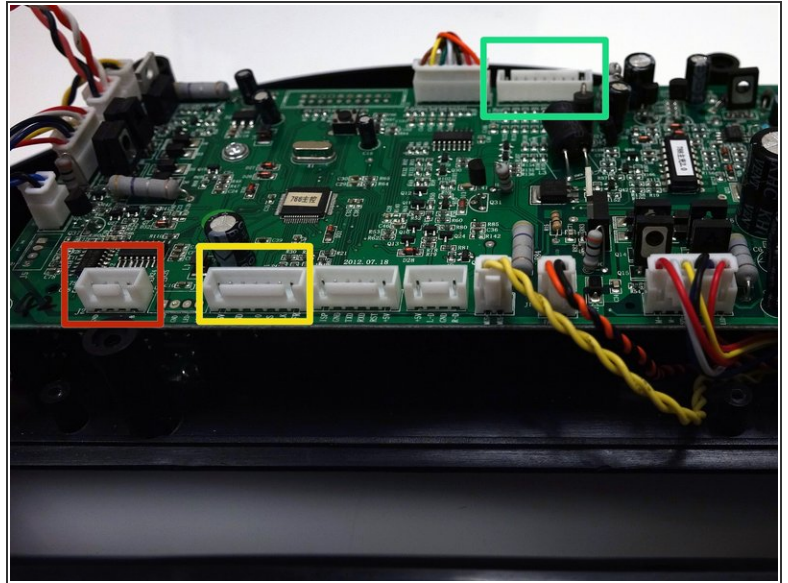
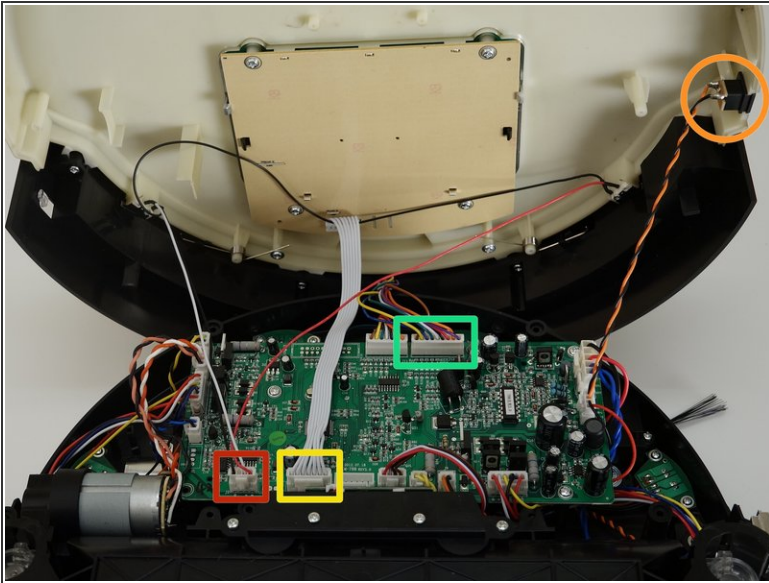
- There are two screw holes inside the brush compartment: one in the centre, one on the left end. Remove both and keep aside for reassembly.
- There are five more screws around bObsweep's edges. Two are installed at the top and bottom, and one on the right end of the main brush.

Step 3



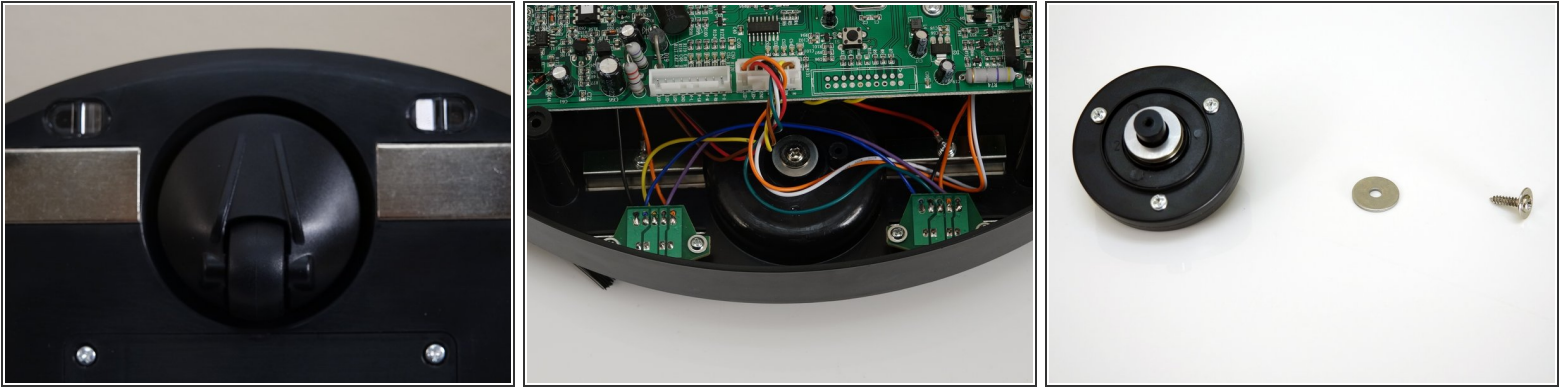
- Flip bOb back over so you can see the screen. Lift the cover up to reveal bObsweep's main board.
- Detach the power inlet from the cover. Grip and slide it out.

Step 4



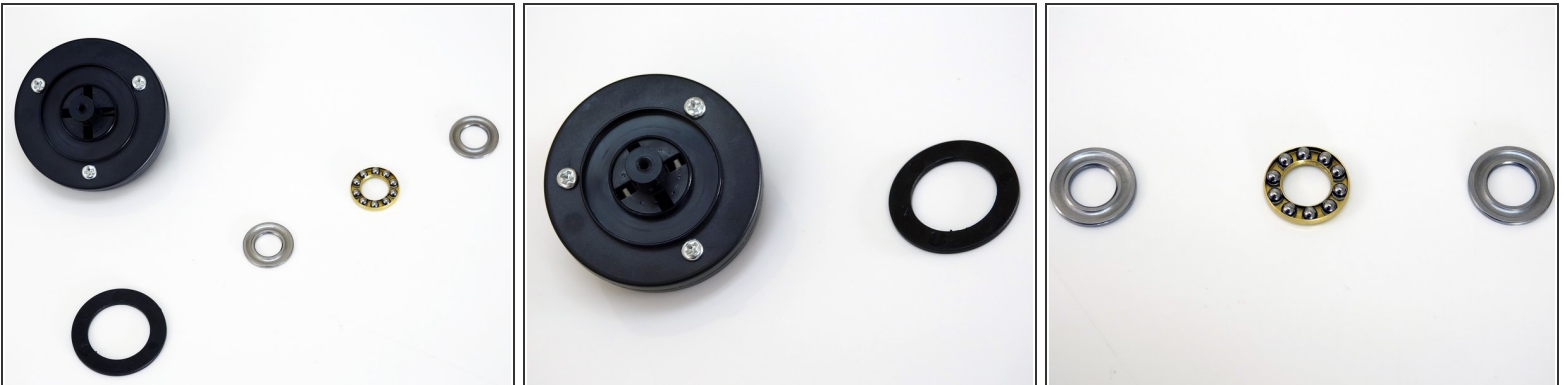
- Remove three circuit plugs from the motherboard. Pinch the small white tab on the side of each circuit plug and pull straight up to release each from the motherboard.
 - 1. On the bottom left corner: a small connector with red, black and white wires.
 - 2. One thick white wire that attaches on the right side of the previous connector.
 - 3. On the top edge of bOb's motherboard: a wide multicoloured connector.
- Place the cover aside and begin your repair.

Step 5 — How to disassemble and clean bObsweep Robotic Vacuum Cleaner front wheel



- There is one screw holding the front wheel in place. It is found in front of bObsweep's main board.
- Hold the wheel from underneath bObsweep while removing the screw.
- ⓘ Set the screw and washer aside for later.
- Lift bObsweep up and the front wheel will be removed.

Step 6



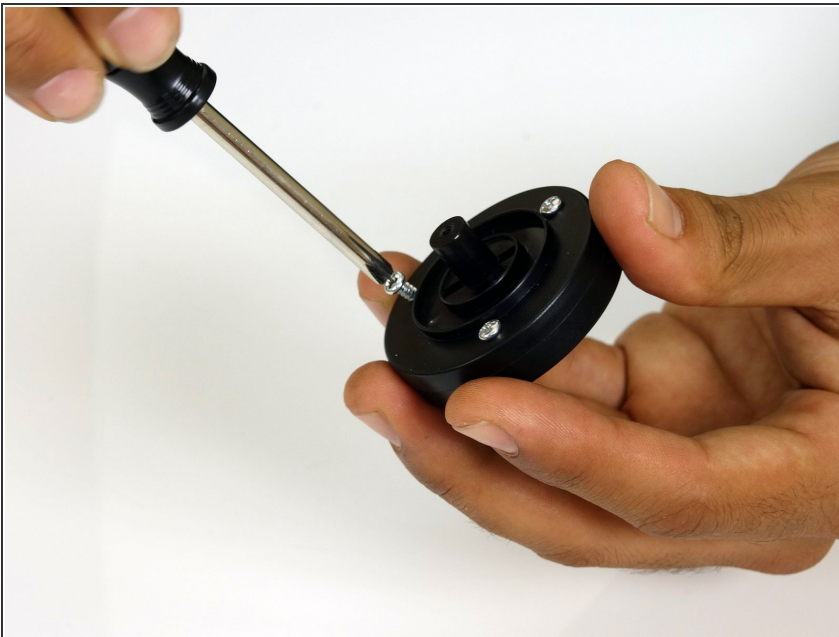
- There are four washers between the front wheel and bObsweep. They usually sit on top of the wheel, but can sometimes get stuck on bObsweep. Make sure to check underneath your vacuum if any pieces are missing.
- There will be one wide black washer that fits in the grooved section of the wheel.
- The other three washers make up the bearing assembly on the innermost ring of the wheel.

Step 7



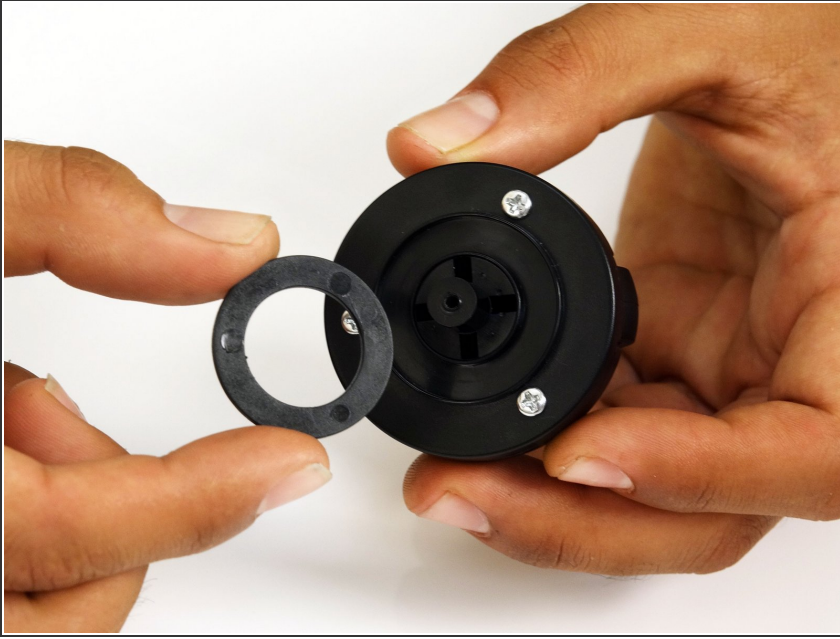
- Un-install the three screws holding the front wheel together. The whole piece will open up so you can remove and clean each piece.

Step 8



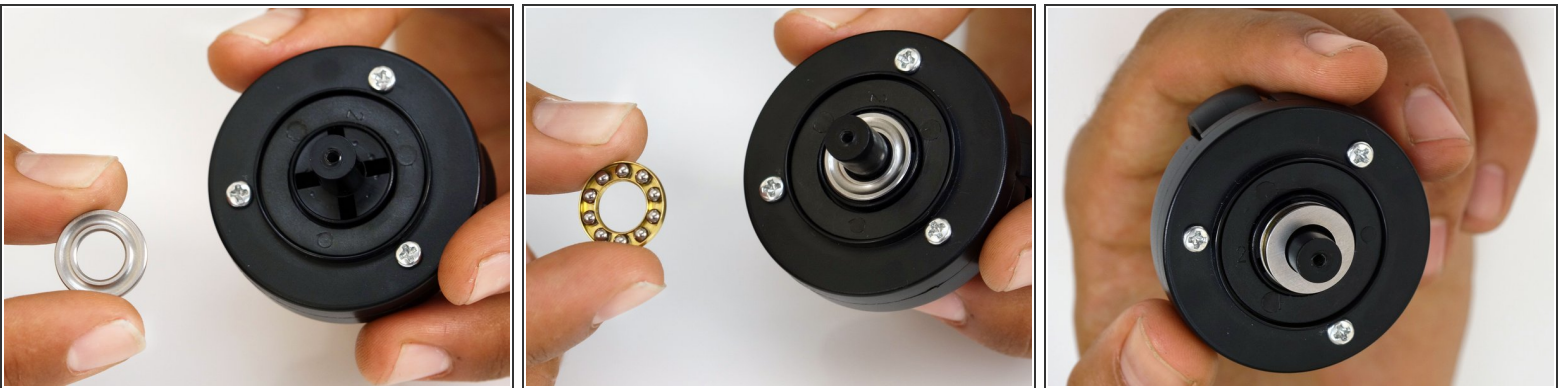
- After cleaning, reassemble all the pieces.
- Hold the wheel together while installing all three screws.

Step 9



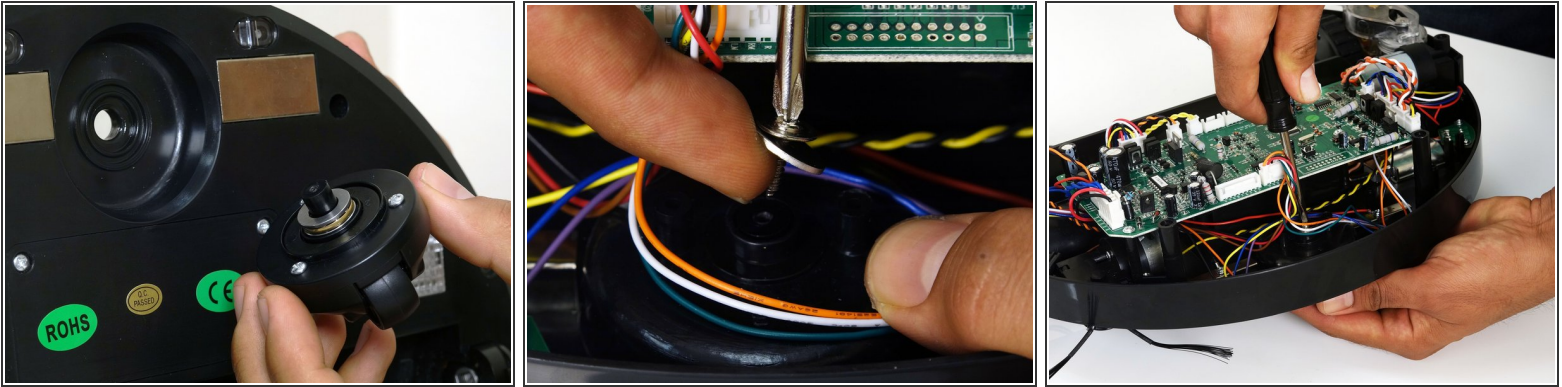
- Place the washer and bearing assembly back on the front wheel in the correct order.
- The large black washer sits on top of the wheel. The number 2 side should be facing upwards.

Step 10



- The bearing assembly should be replaced in the following order:
 - Place one silver bearing on the wheel, flat side facing down.
 - Place the gold bearing next.
 - The final piece is the second silver bearing. It should be placed on top of the wheel. This time the flat side should be facing up.

Step 11



- Put the fully assembled front wheel back in place underneath bObsweep.
- Reinstall the final washer and screw from inside bObsweep, while holding the wheel in place. This will ensure a secure installation.

Thorough cleaning of the wheel ensures better performance and can be performed as often as necessary.