



Olympus D590 Backplate Replacement

Step-by-step Instruction Guide Olympus D590...

Written By: Katie



INTRODUCTION

Step-by-step Instruction Guide

Olympus D590 Camera Backplate Removal. Prerequisite guides for replacing microphone, speaker, LCD screen, and lens.



TOOLS:

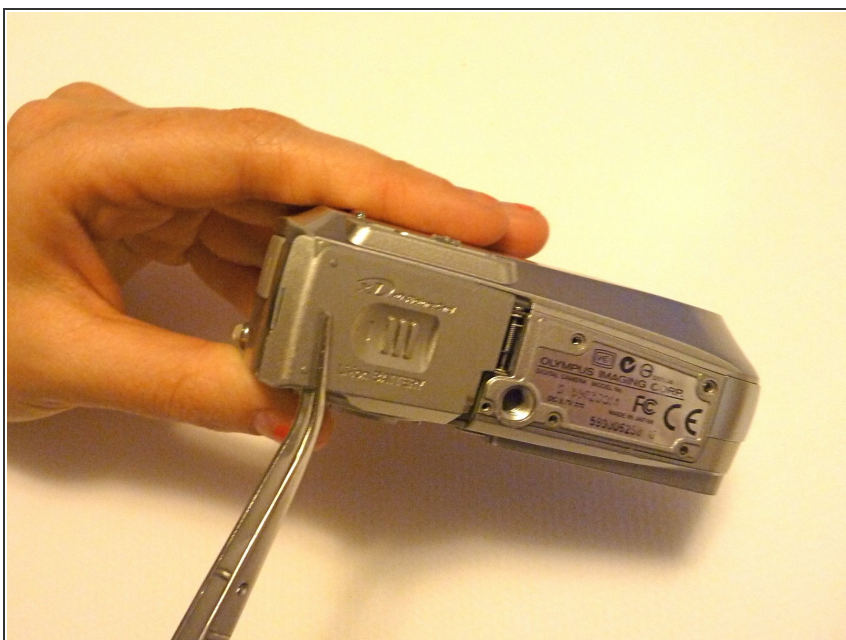
- [Phillips #00 Screwdriver](#) (1)
 - [Flathead 3/32" or 2.5 mm Screwdriver](#) (1)
 - [iFixit Opening Tool](#) (1)
-

Step 1 — Face Plate



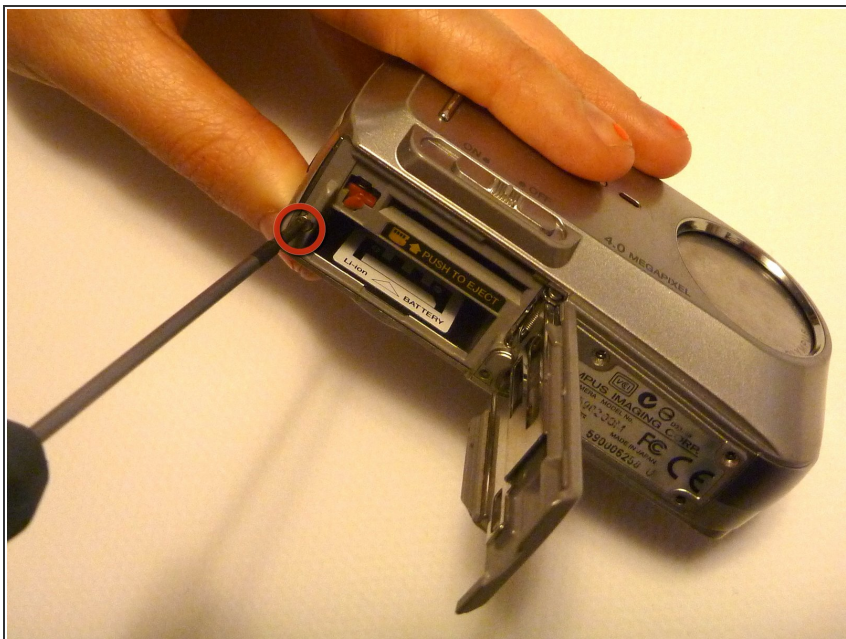
- Remove five baseplate screws using a Phillips #00 screwdriver.

Step 2



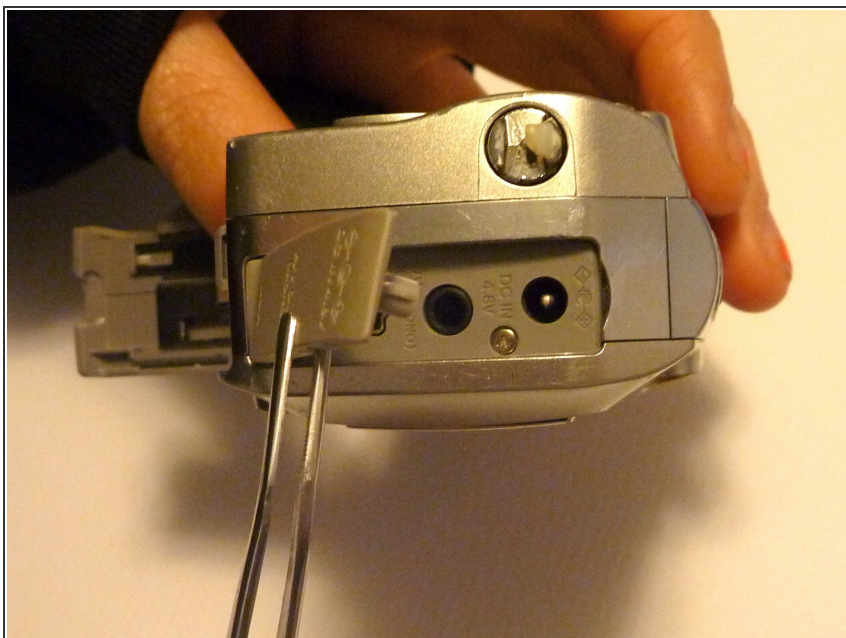
- Press and slide the battery cover retainer clip to the left. Use tweezers to lift the battery cover away.

Step 3



- Remove the single screw from the battery housing using a Phillips #00 screwdriver.

Step 4



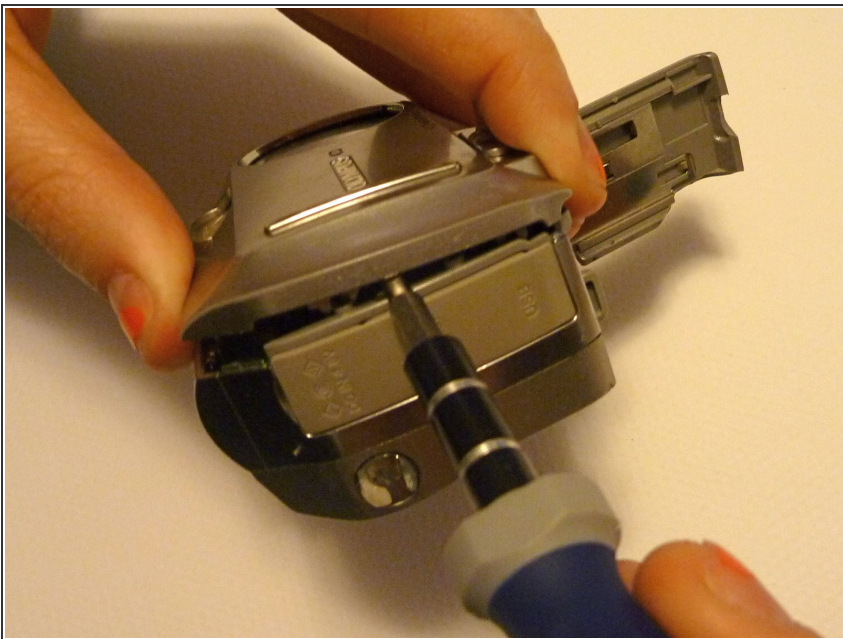
- Using tweezers, lift the rubber plate to expose the ports.

Step 5



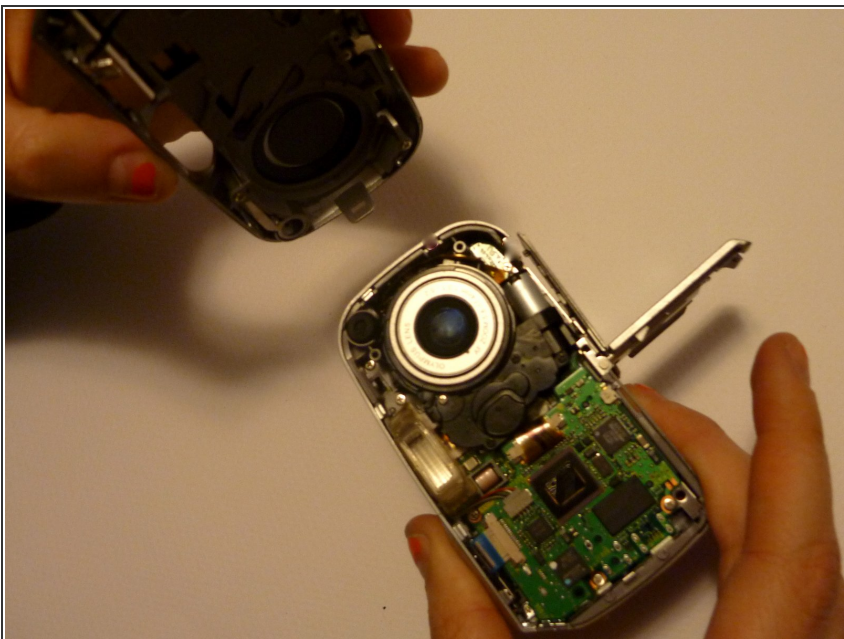
- Remove two screws from the ports using a Phillips #00 screwdriver.

Step 6



- Use a spudger to pry the faceplate away from the rest of the camera.

Step 7



- To avoid disconnection of the connector line to the motherboard, use caution when pulling faceplate away from camera case.

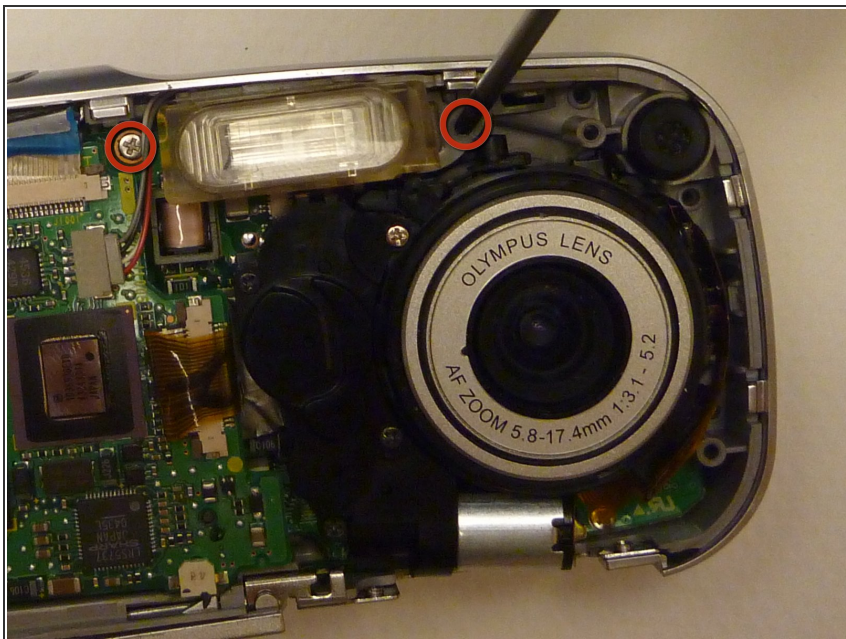
⚠ Damage to the connector line will prevent the on/off power switch's operational function.

Step 8 — Backplate



- Using a Phillips #00 screwdriver, remove three screws fastened to the camera backplate edge.

Step 9



- Using a Phillips #00 screwdriver, remove the two camera flash screws secured to either side of bulb housing component.

Step 10



- Using an iFixit opening tool, pry the backplate from the camera internal housing component.

Step 11



- Pull the backplate away from the camera internal housing component.

To reassemble your device, follow these instructions in reverse order.