



# Disassembling Motorola i90c Logic Board

This guide details how to remove the logic board.

Written By: Grant Glazebrook



# INTRODUCTION

This guide details how to remove the logic board.

## TOOLS:

Flathead 3/32" or 2.5 mm Screwdriver (1)

Tweezers (1)

TR9 Torx Security Screwdriver (1)

## Step 1 — Battery



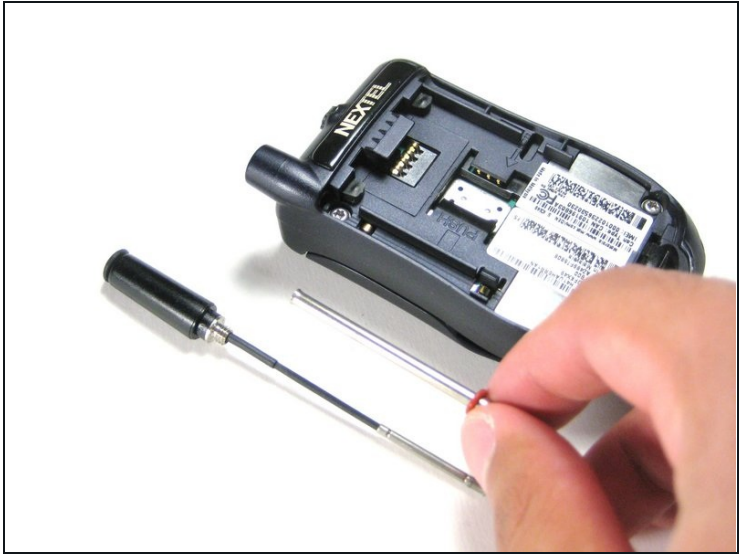
- Slide the notch downward while pulling the back cover off to remove it.

## Step 2



- Use your fingers to push the battery upward from the bottom.
- Lift upwards to remove the battery.

### Step 3 — Antenna



- Unscrew the antenna in a counter-clockwise fashion.
- Remove the aluminum cover.

### Step 4 — Disassembling Motorola i90c Internal Backplate



- Unscrew the 3 screws shown.
- Lift up the right part of the Nextel logo and unscrew the screw underneath.



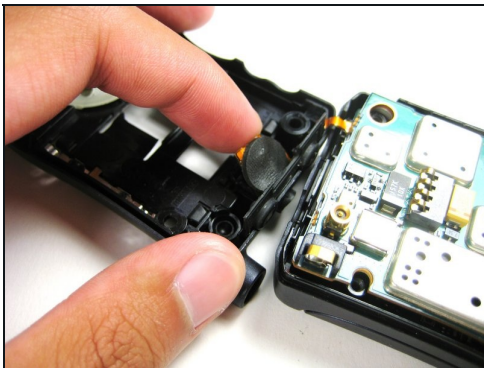
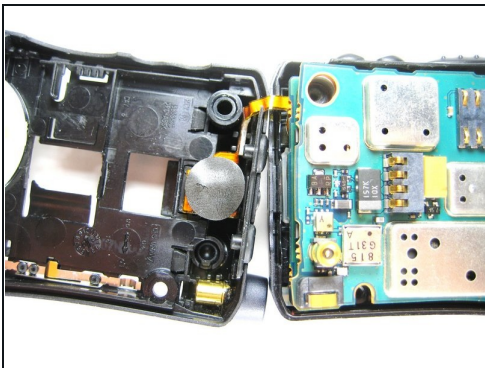
## Step 5



⚠ DO NOT force the cover off as it could damage the ribbon cable!

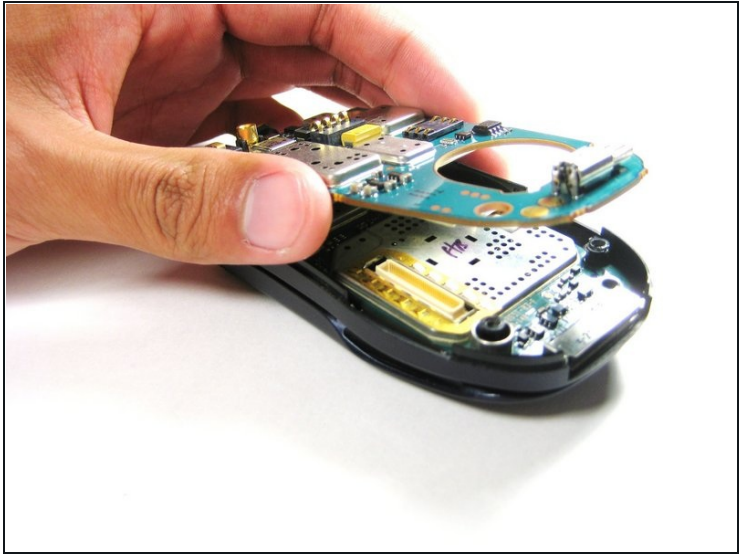
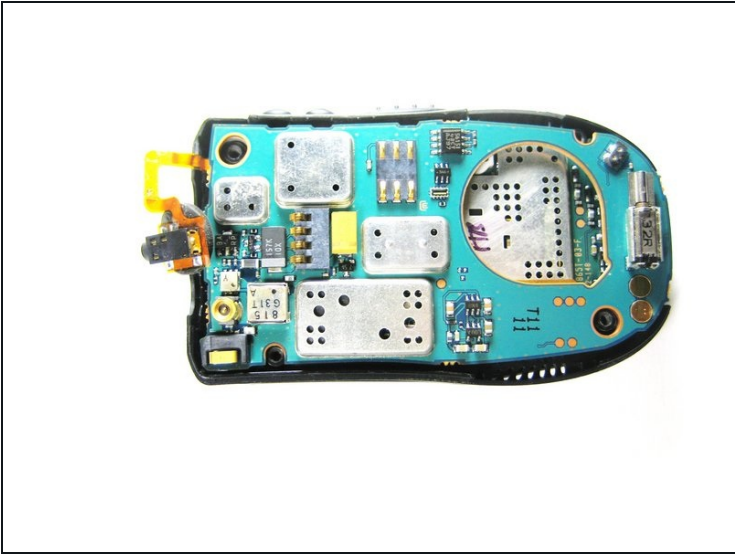
- Gently lift the back cover off.

## Step 6



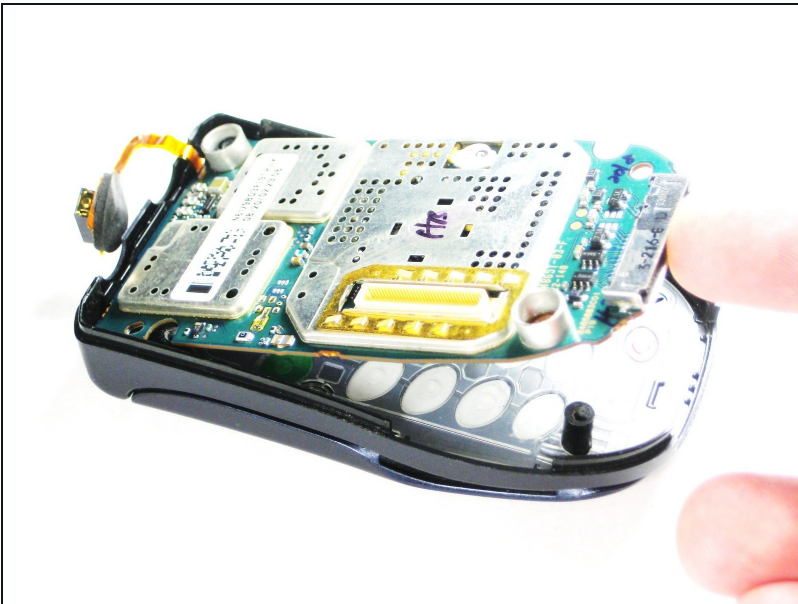
- Carefully pry off the connection between the headphone jack and logic board.

## Step 7 — Logic Board



- Lift the first logic board off of the rest of the device.

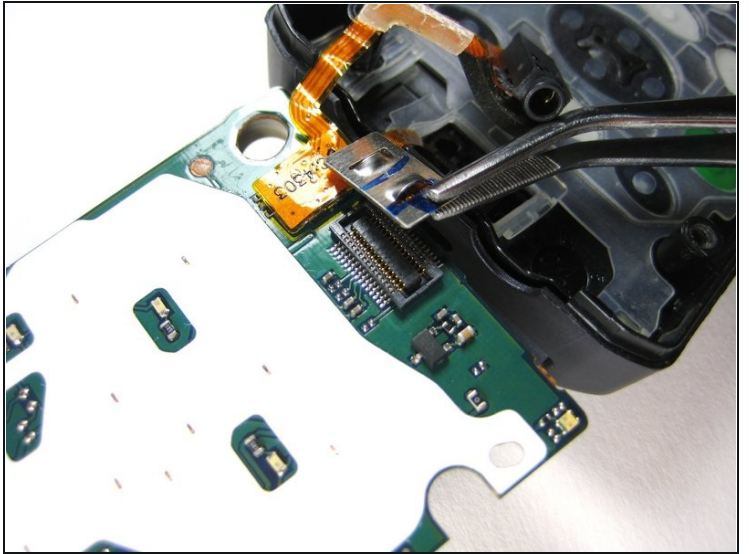
## Step 8



- Gently lift the second logic board from the rest of the device.

⚠ DO NOT force the board straight off as it could damage the ribbon cable!

## Step 9



- Using [tweezers](#), carefully pull off the connector shown.

---

To reassemble your device, follow these instructions in reverse order.