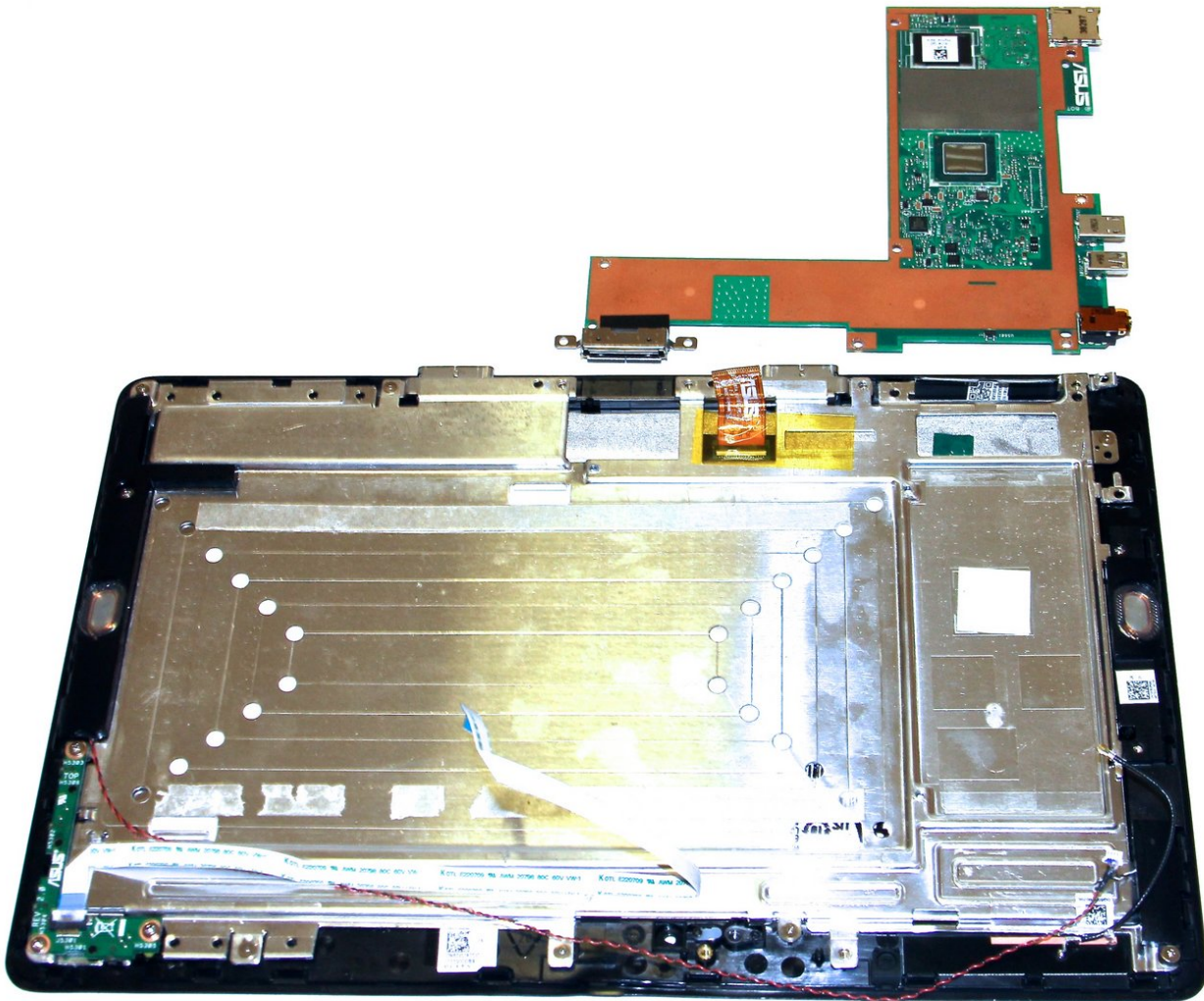




# Asus Transformer T100 Motherboard Replacement

Replace the motherboard of your Asus Transformer T100.

Written By: Taylor Pantiga



## INTRODUCTION

The motherboard of the device is the tablet's main processing unit. To reach it, the plastic backing, battery, and camera must be removed.



### TOOLS:

- [iFixit Opening Tools](#) (1)
- [Spudger](#) (1)
- [Tweezers](#) (1)
- [Phillips #1 Screwdriver](#) (1)



### PARTS:

- [ASUS Transformer Book \(T100\) Motherboard](#) (1)

## Step 1 — Rear Cover



- Separate the tablet from the base by pressing the large silver button below the tablet. The silver button is located at the base of the tablet.
- Remove the tablet by lifting up.

## Step 2




- Insert the opening tool into the seam of the tablet casing and gently pry upwards.
- With a little force, you will feel the clips release.

## Step 3



- Slide the tool along all four edges of the tablet, making sure that all the clips are released.

 Do not break these clips; otherwise, the screen will become less secure.

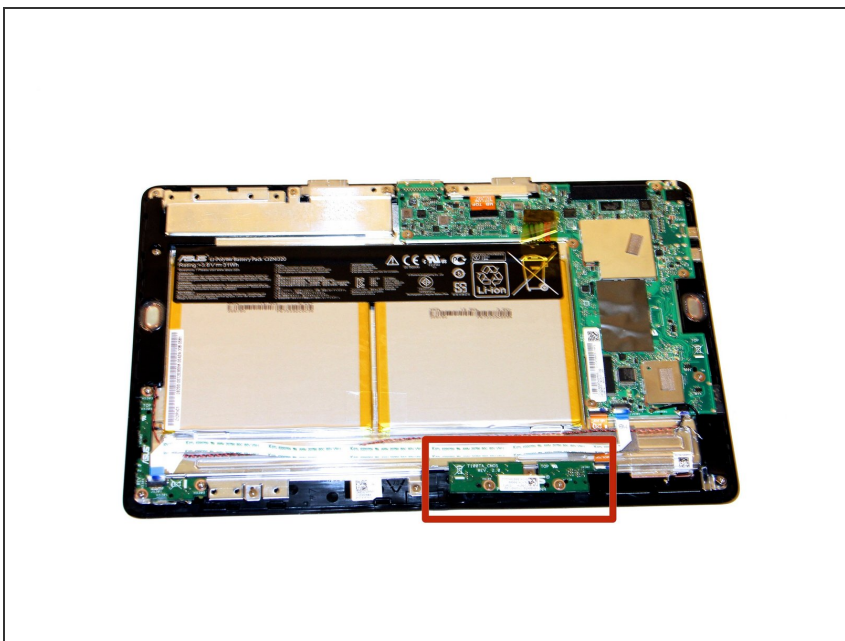


## Step 4



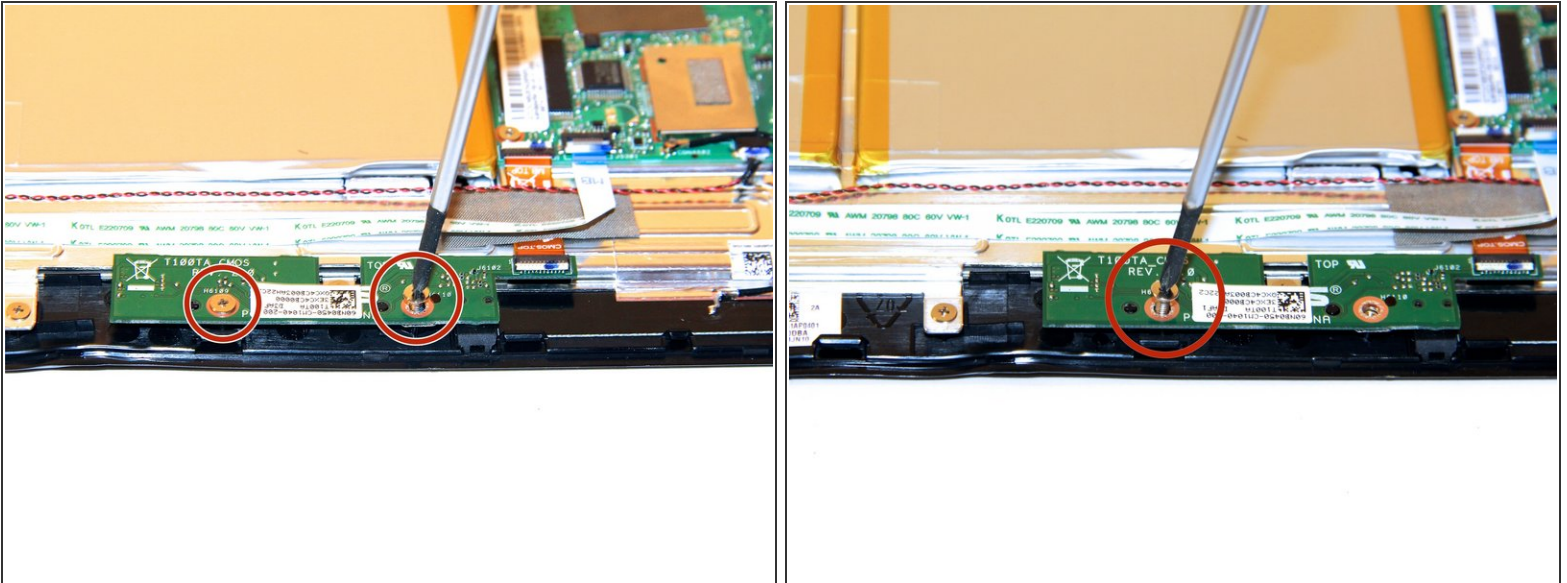
- Remove the rear casing.

## Step 5 — Front Facing Camera Board



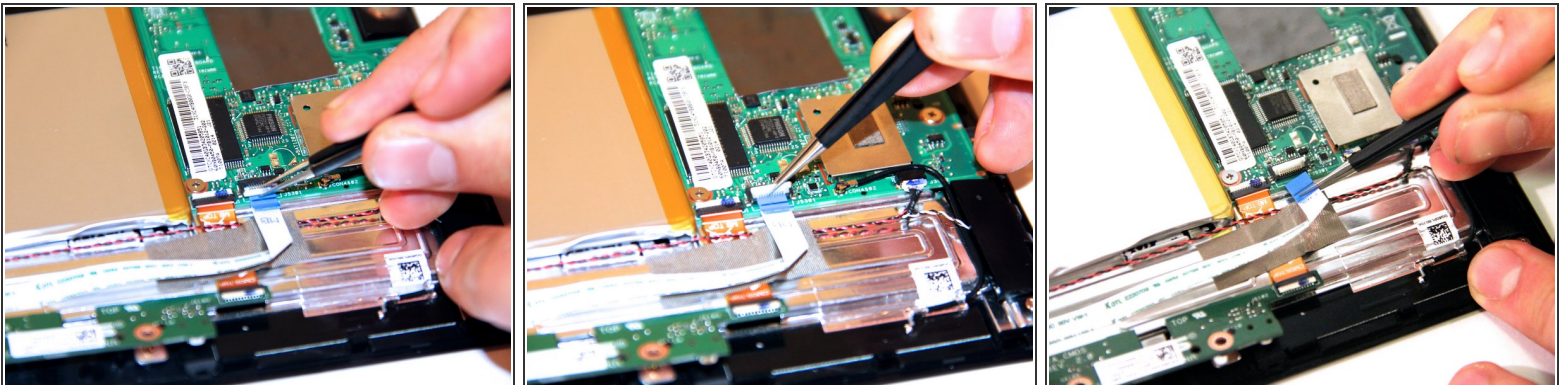
- The camera board is located in the red square in this image.

## Step 6



- Remove the two screws on the camera board using a Phillips #1 Screwdriver.

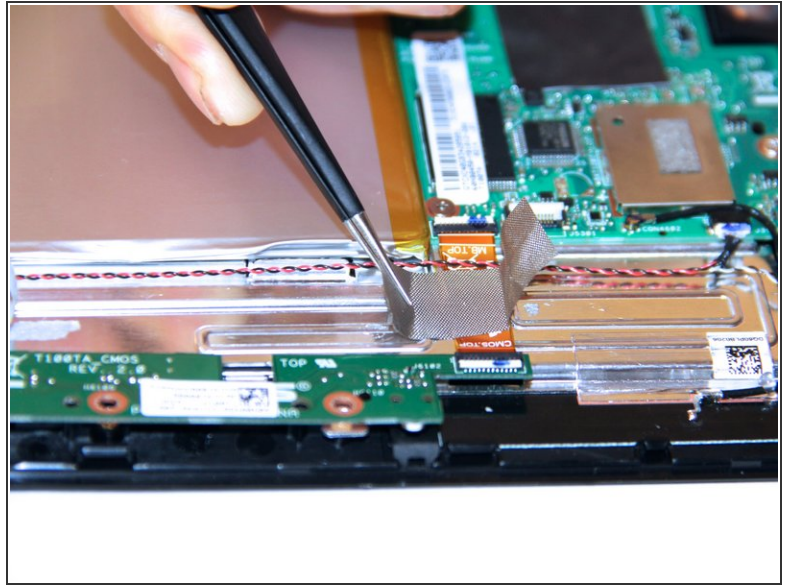
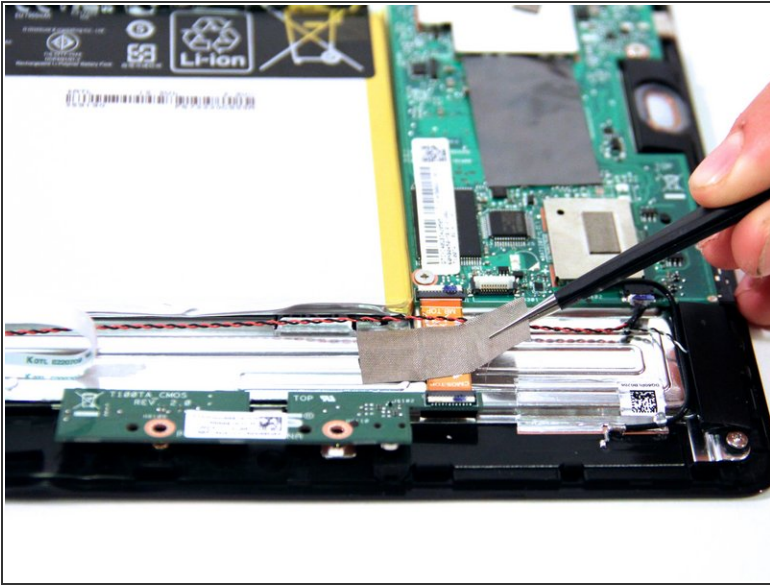
## Step 7



- Lift up the power button cable retention clip on the motherboard and pull the cable out.

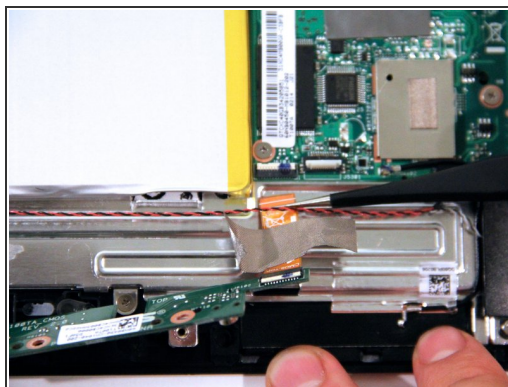
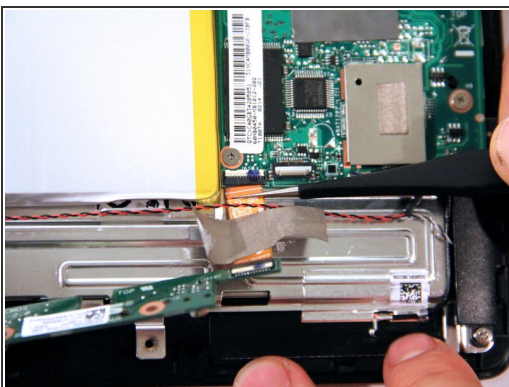


## Step 8



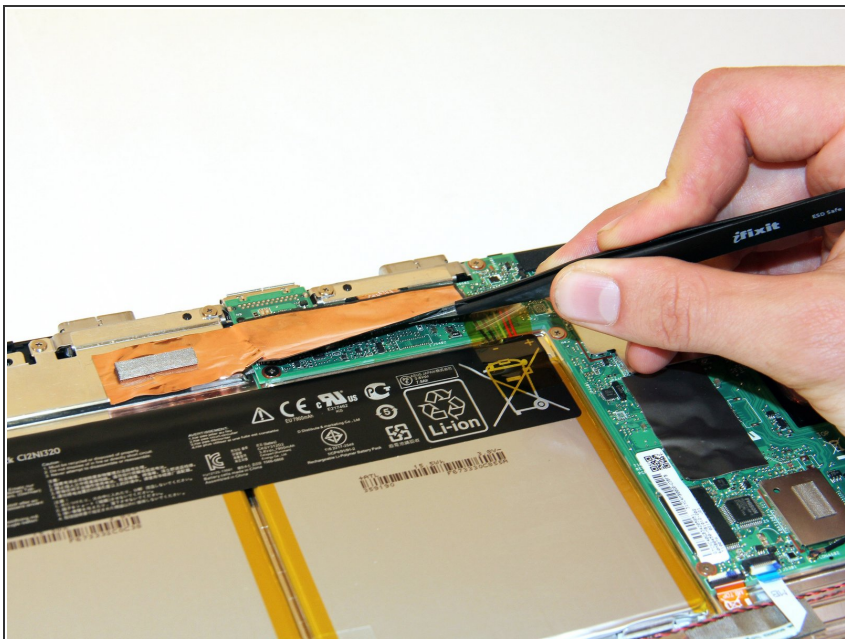
- On the camera connection apparatus, locate the silver tape that connects to the tablet.
  - Peel the silver tape off of the tablet on both sides of the connection apparatus.
- i** If this step has been completed correctly, the camera board should be loose, with the tape still attached to the connection apparatus.

## Step 9



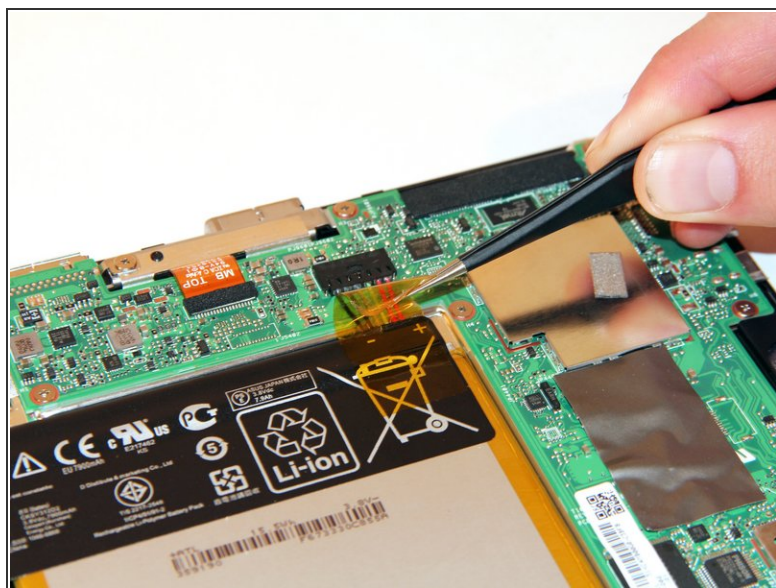
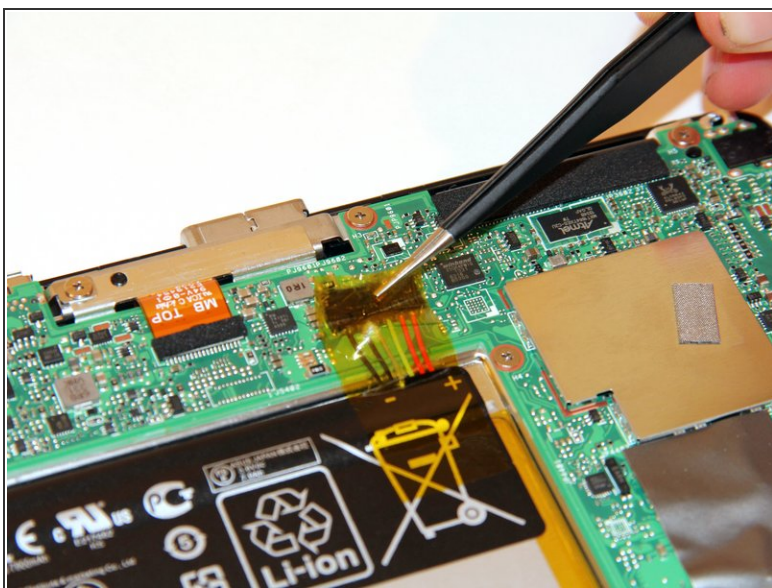
- Gently pull the Orange ribbon cable out of the connection port.
- i** This port has no clip. The orange apparatus should slide out with a small tug.

## Step 10 — Battery



- Remove the copper tape carefully.

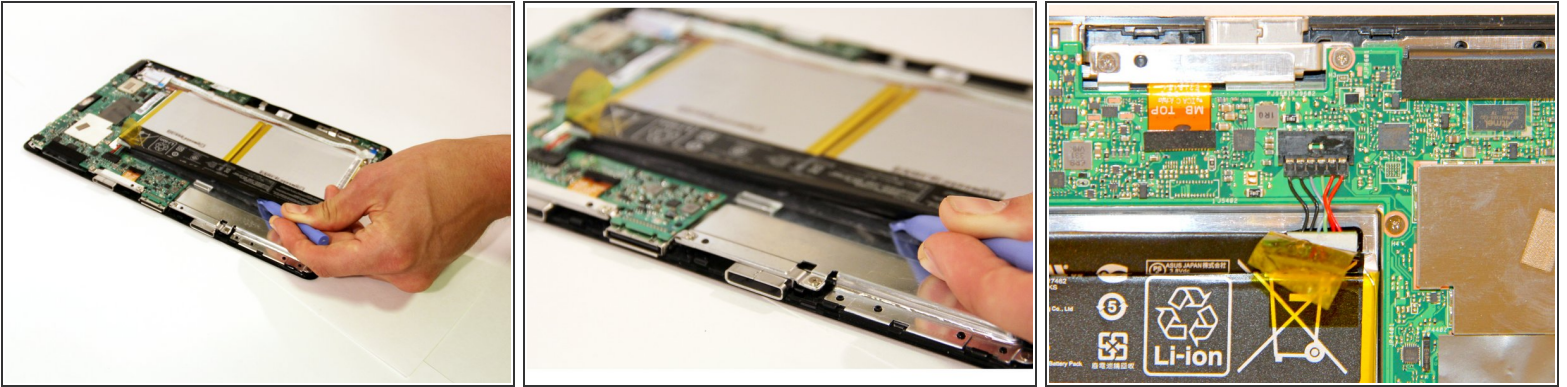
## Step 11



- Gently pull back the yellow transparent plastic covering on top of the battery connection port.



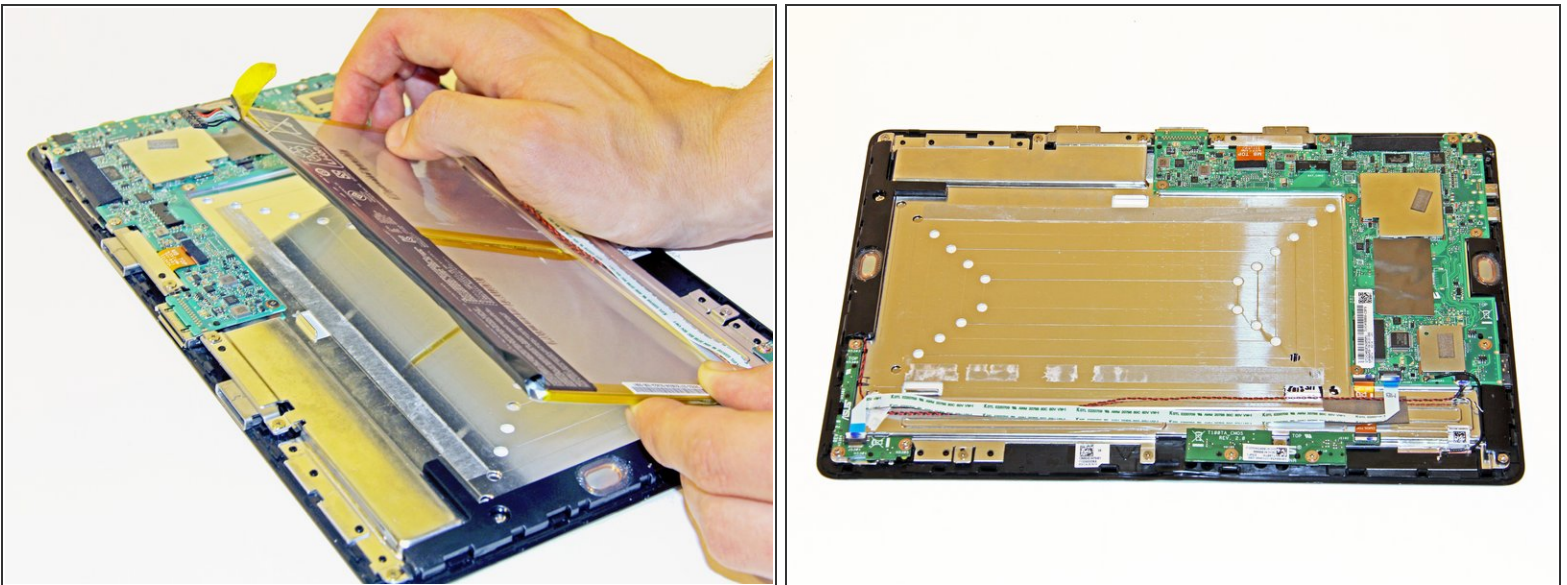
## Step 12



- Rotate the device so the top of the screen is facing you. Place the plastic opening tool underneath the battery and gently pry upwards to lift the battery out.

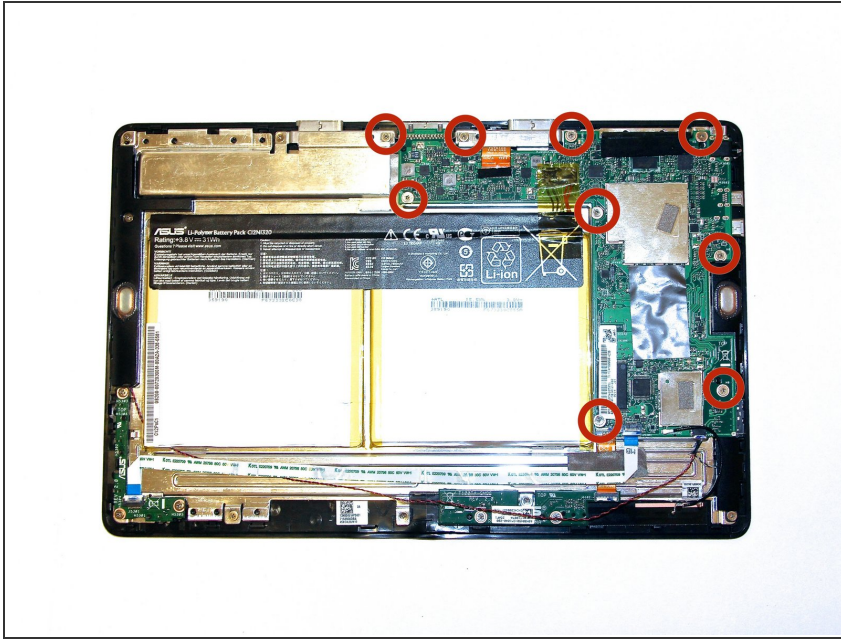
**i** The battery wire harness will slide out as the battery is pried up.

## Step 13



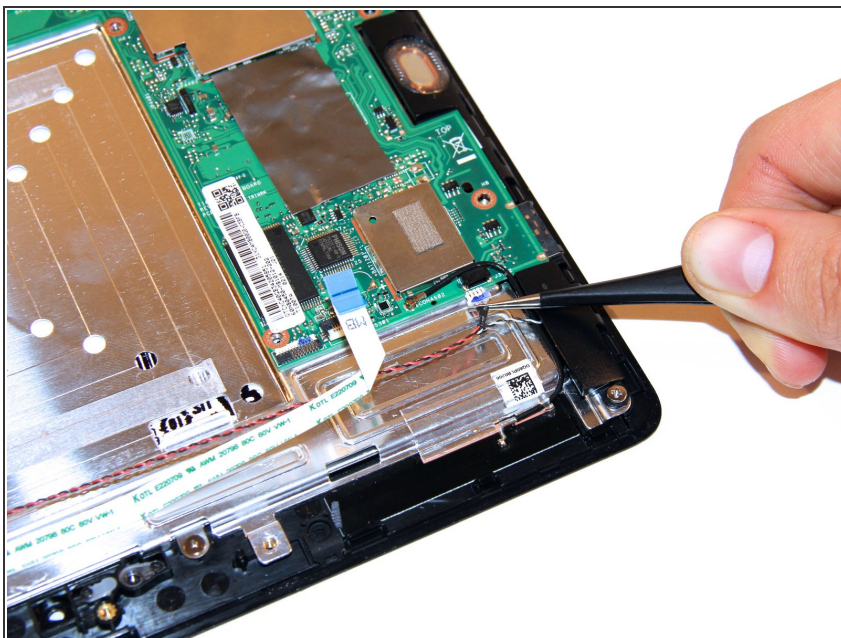
- Remove the battery by slowly peeling the battery away from the connected side.
- The adhesive on the back will pull away from the battery.

## Step 14 — Motherboard



- Remove the marked screws by using a Phillips #1 screwdriver.

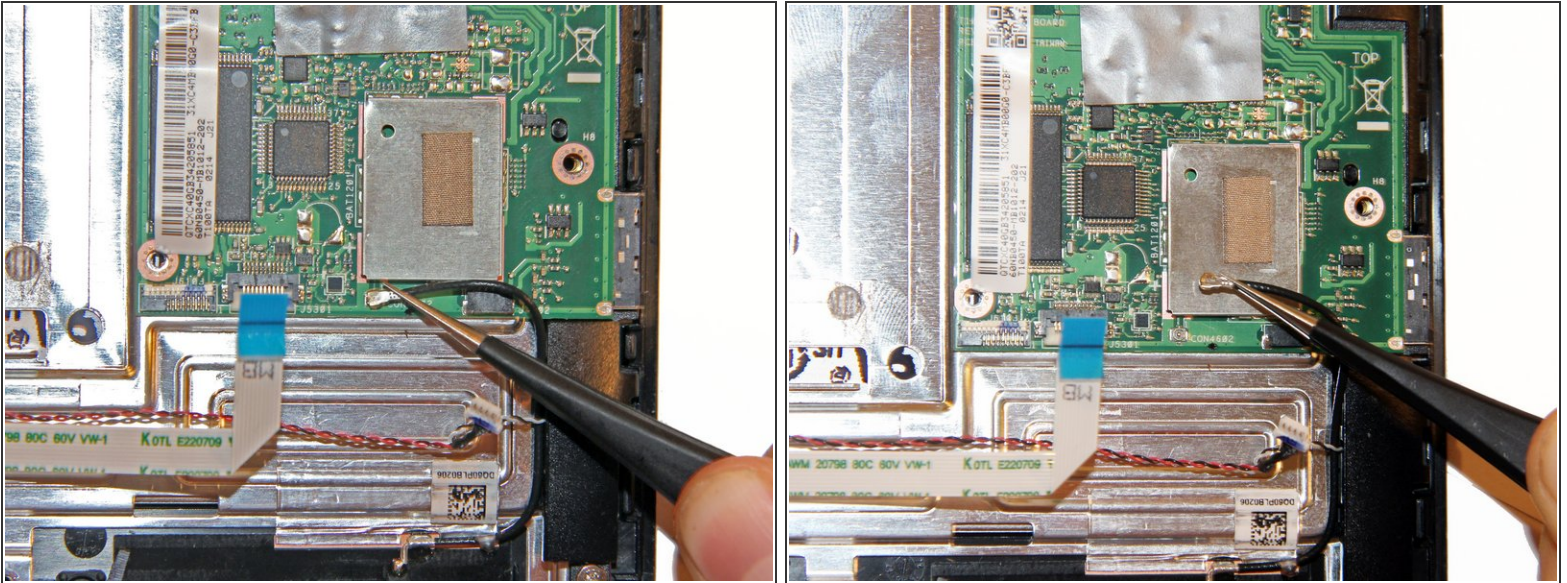
## Step 15



- Locate the twisted black and red wire at the bottom of the motherboard.
- Use tweezers to gently slide the black and red wire out of the connection port on the motherboard.



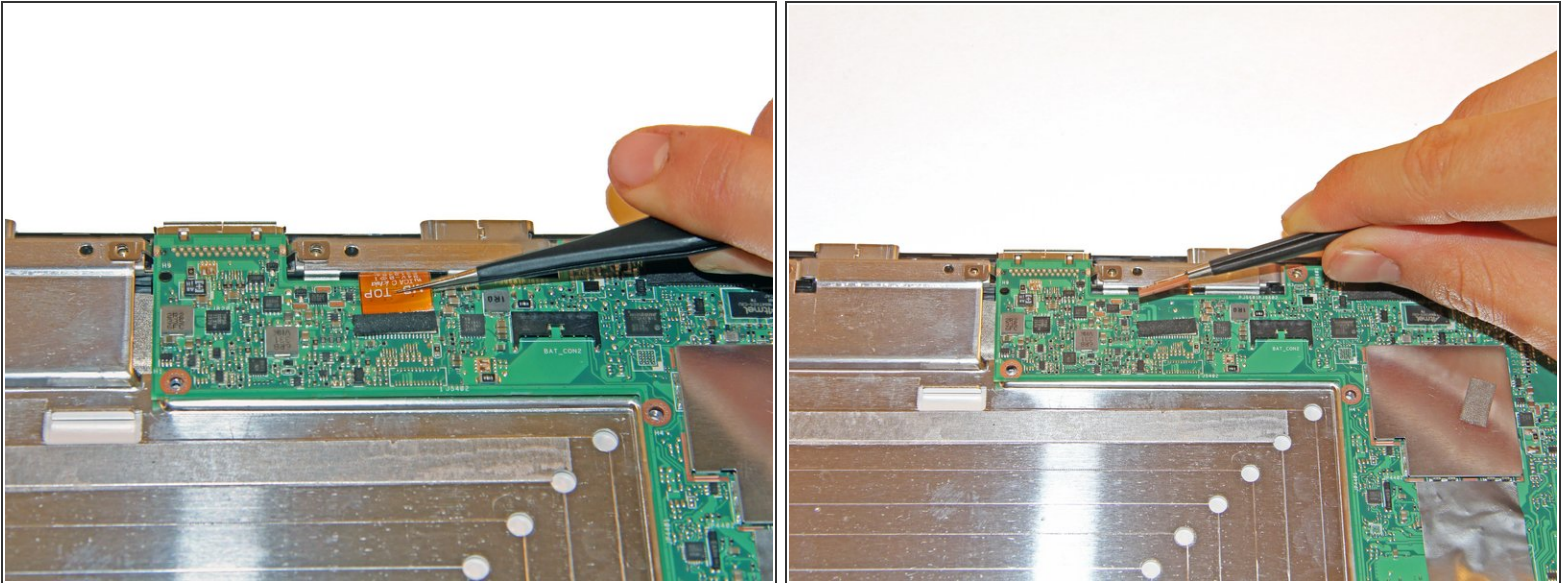
## Step 16



- Next to the black and red wire, locate a black wire with a sliver connection ending.
  - Use tweezers to disconnect that wire from the motherboard
- i** This wire disconnects in an upward motion, not in a sliding motion like the other connection ports.

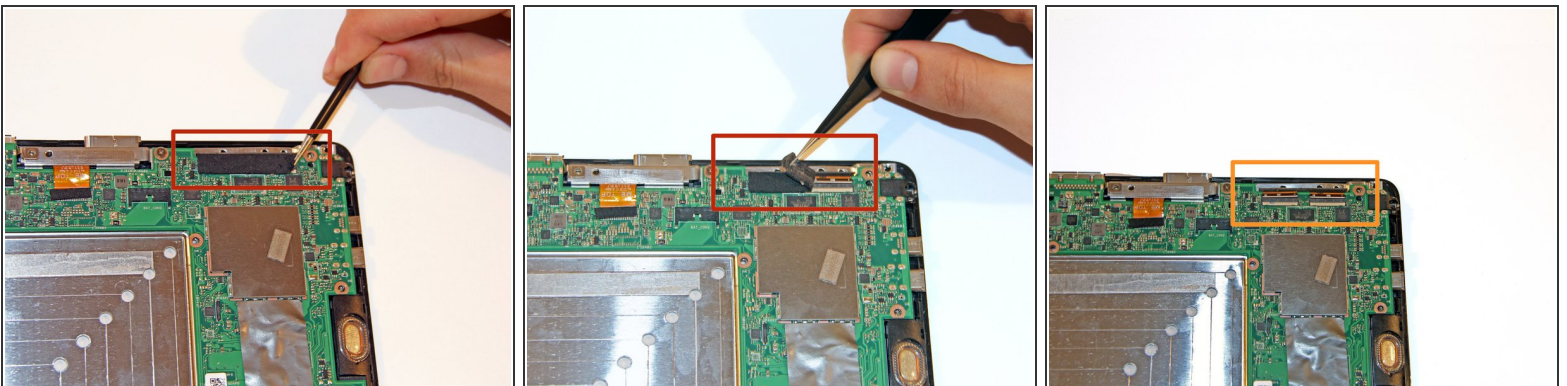


## Step 17



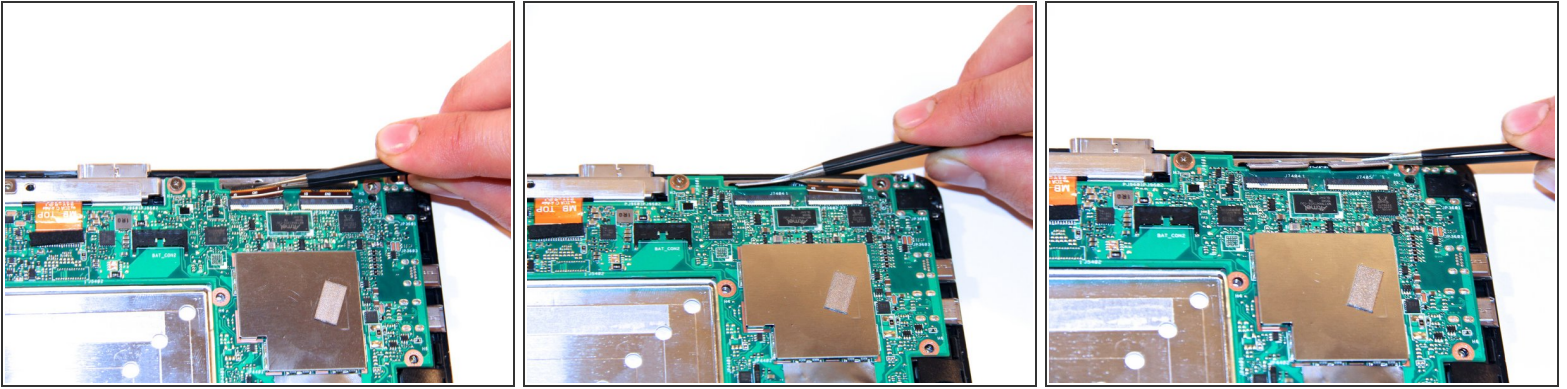
- At the top end of the motherboard, use tweezers to gently slide the orange connection apparatus out of the connection port.

## Step 18



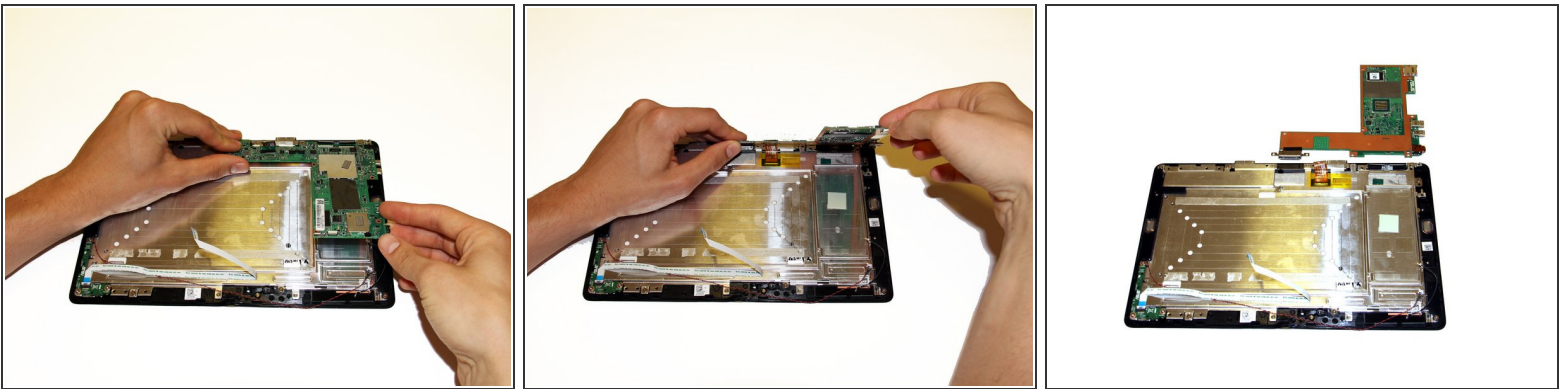
- Next to the orange connection apparatus port, locate the LCD connection apparatus.
- Use tweezers to peel the protective layer off of the connection port.
- ⚠ Be careful where the tweezers are placed. Make sure that only the squishy protective layer is being grabbed and peeled off.
- Once the tape is removed, the LCD connection port should look like this.

## Step 19



- Using the tweezers, gently remove the LCD connection apparatus from the LCD connection port.
- ⓘ This can be tricky because the LCD connection apparatus has two sections. It is advised to gently wiggle one side out and then slide the second side out after.

## Step 20



- Using the top end of the motherboard as a hinge and fold the motherboard back so it rests outside of the tablet chassis.
- ⓘ There is a small amount of adhesive on the back side of the motherboard, which provides a small amount of resistance to the folding motion.
- If done correctly, the motherboard should look the picture above.

To reassemble your device, follow these instructions in reverse order.