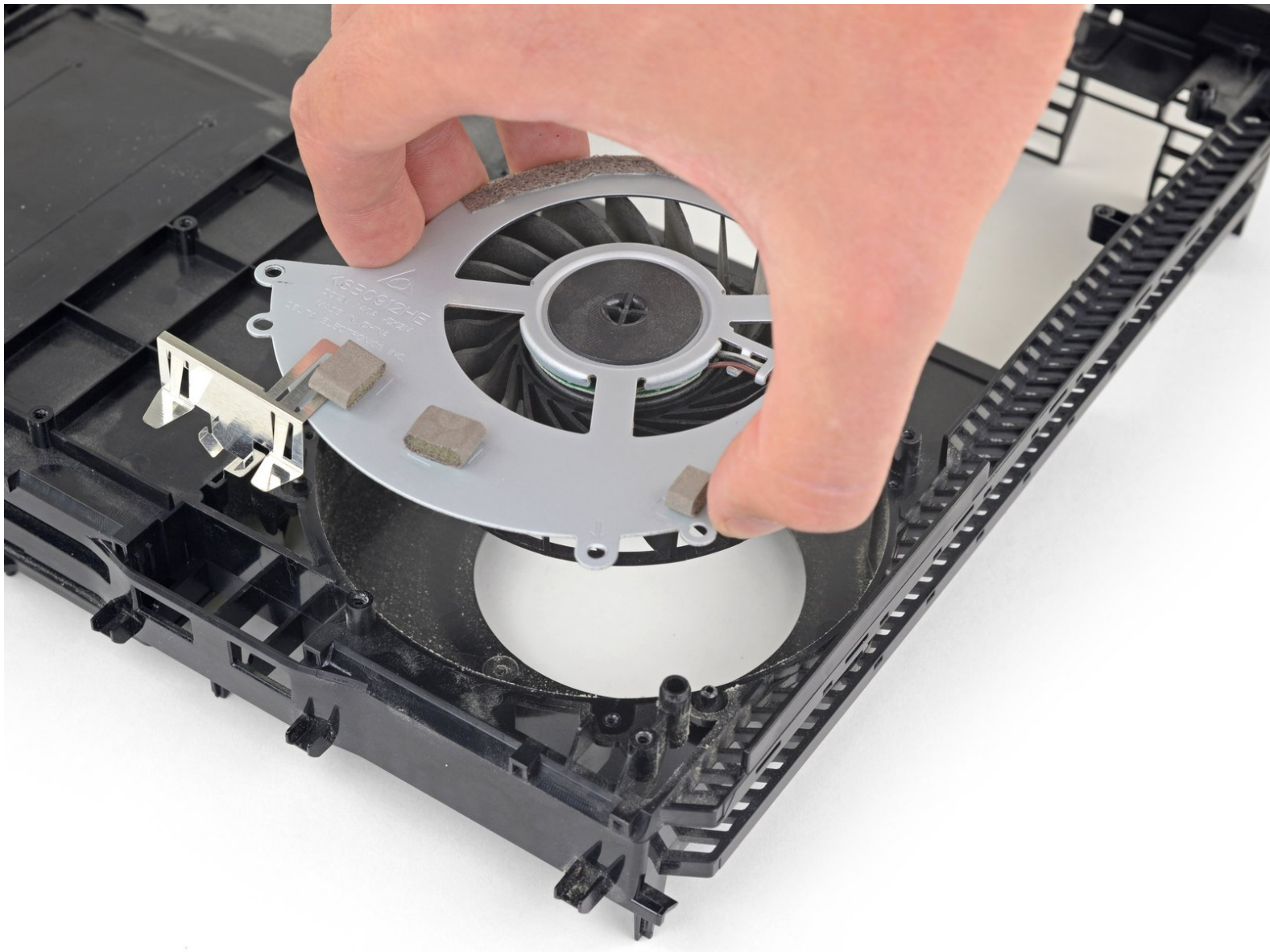




# PlayStation 4 Fan Replacement

Follow this guide to replace the fan on your...

Written By: Sam Omiotek



# INTRODUCTION

Follow this guide to replace the fan on your Sony Playstation 4.

**Unplug your PS4 before beginning any repairs.**



## TOOLS:

- [Phillips #0 Screwdriver](#) (1)
- [Tweezers](#) (1)
- [Spudger](#) (1)
- [TR8 Torx Security Screwdriver](#) (1)



## PARTS:

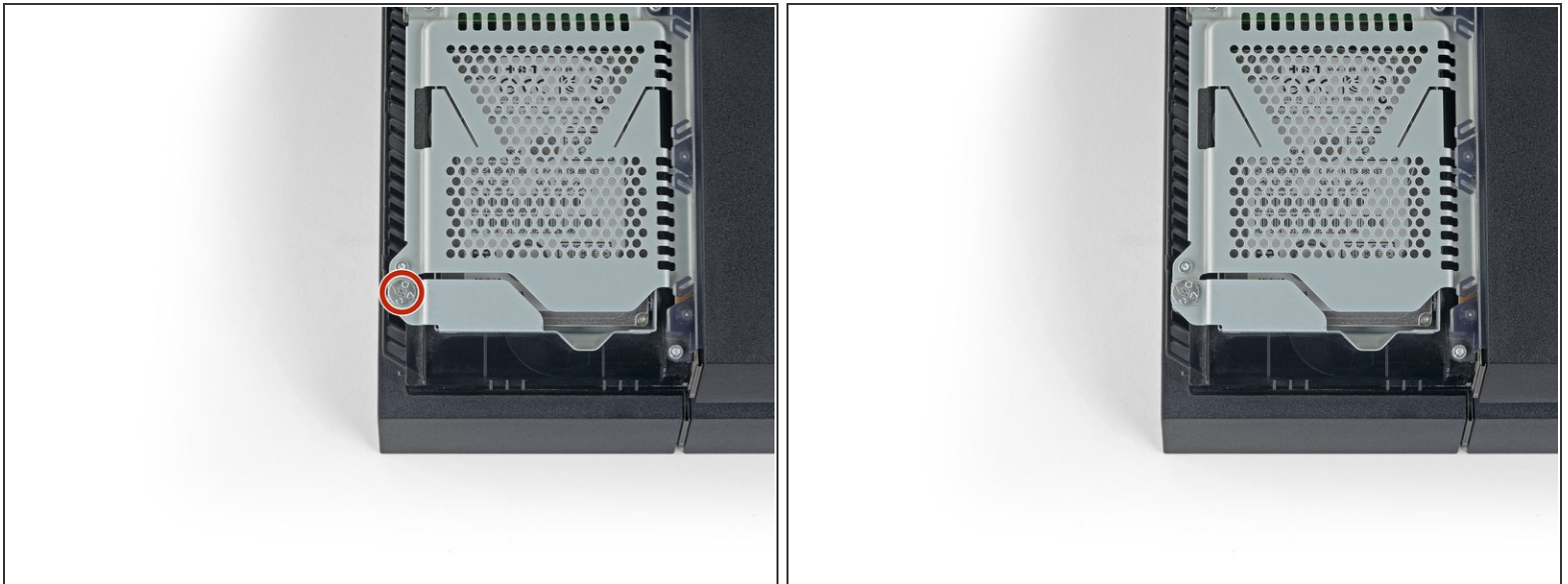
- [PlayStation 4 Fan](#) (1)

## Step 1 — Remove the hard drive cover



- Grip the PS4 with both hands along the gap in the top cover.
- Push the glossy side of the top cover with your thumbs until it pops to the side.
- Lift the glossy top cover up and back to remove it from the PS4.

## Step 2 — Remove the hard drive bracket screw



- Use a Phillips screwdriver to remove the 6.5 mm screw securing the hard drive bracket to the enclosure.

### Step 3 — Remove the hard drive bracket



- Pull the hard drive bracket out of the enclosure.

**⚠ Be careful not to drop the hard drive. The internal components are fragile and are susceptible to damage by sudden shock.**

### Step 4 — Flip over the PS4



- Flip the PS4 upside-down with the back side facing towards you.



## Step 5 — Remove the warranty stickers



- Use tweezers to remove the two stickers in the center of the back of the PS4 exposing two case screws.

## Step 6 — Remove the plastic screw covers



- Use tweezers to carefully remove the plastic screw covers in each corner, exposing two more case screws.

## Step 7 — Remove the rear case screws



- Remove the four 7.2 mm Torx security screws on the back of the PS4.

## Step 8 — Remove the lower case



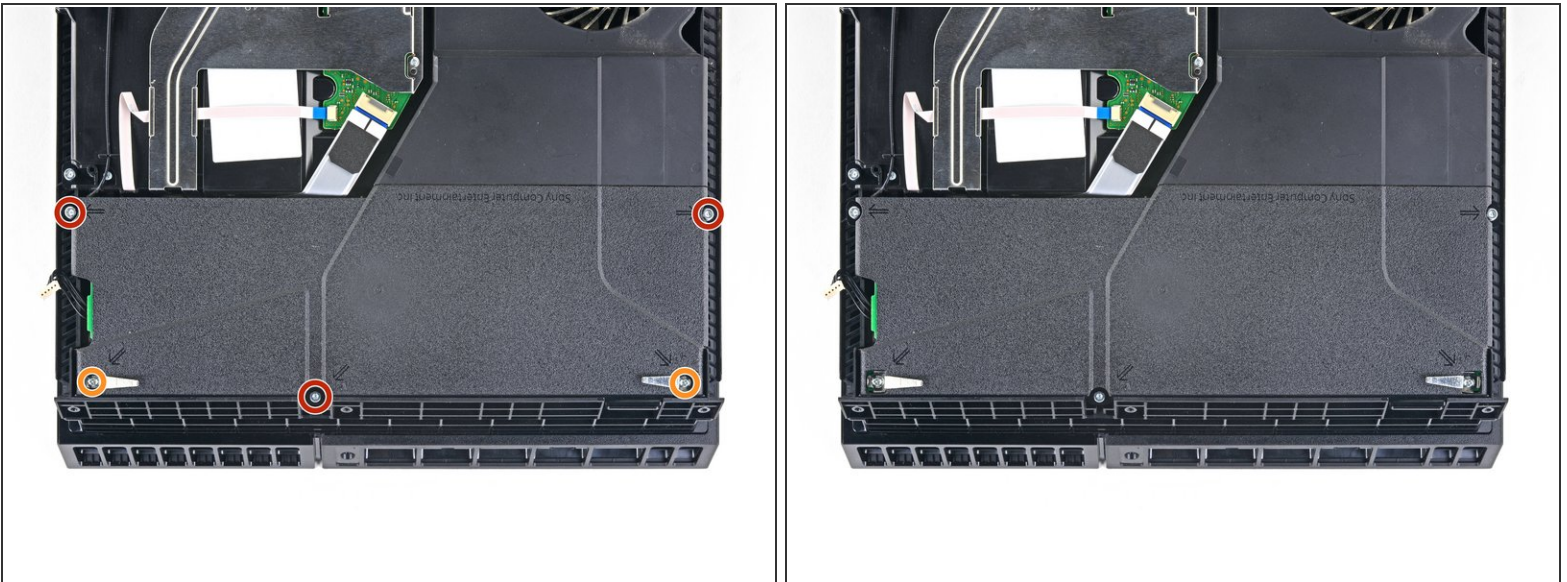
- Use your thumbs to lift the lower case up and off the PS4.
- ⓘ The lower case is held into place by plastic clips. You may need to use significant force to release the lower case.

## Step 9



- Use a pair of tweezers to pull the power supply cable straight out and disconnect the power supply unit from the motherboard.
- ⓘ If your connector feels stuck, use a spudger to gently pry the connector out.

## Step 10 — Remove the power supply unit

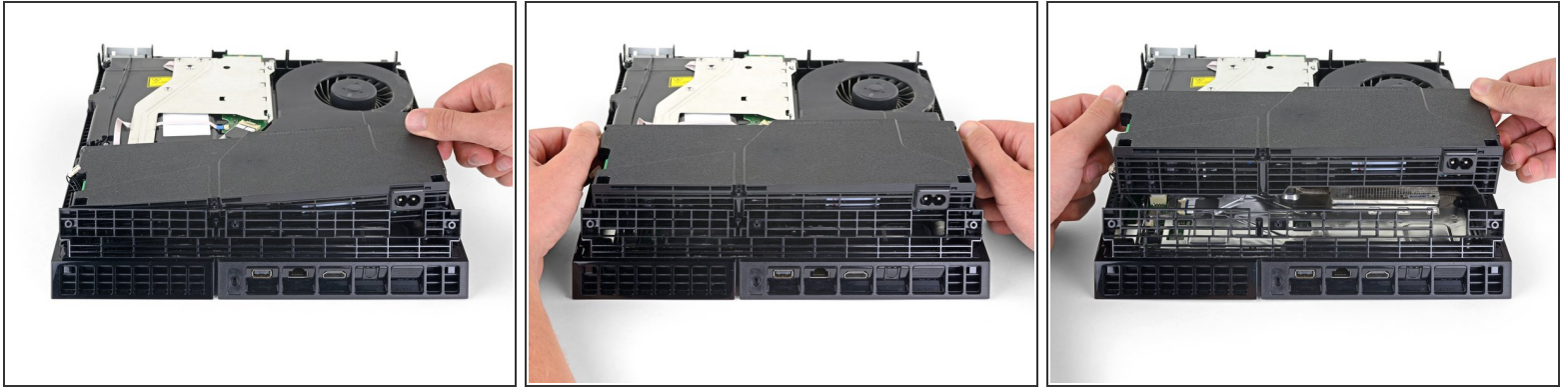


- Remove three 9.7 mm Torx security screws.
- Remove two 41 mm Phillips screws and brackets.

This document was generated on 2023-03-07 04:32:39 PM (MST).

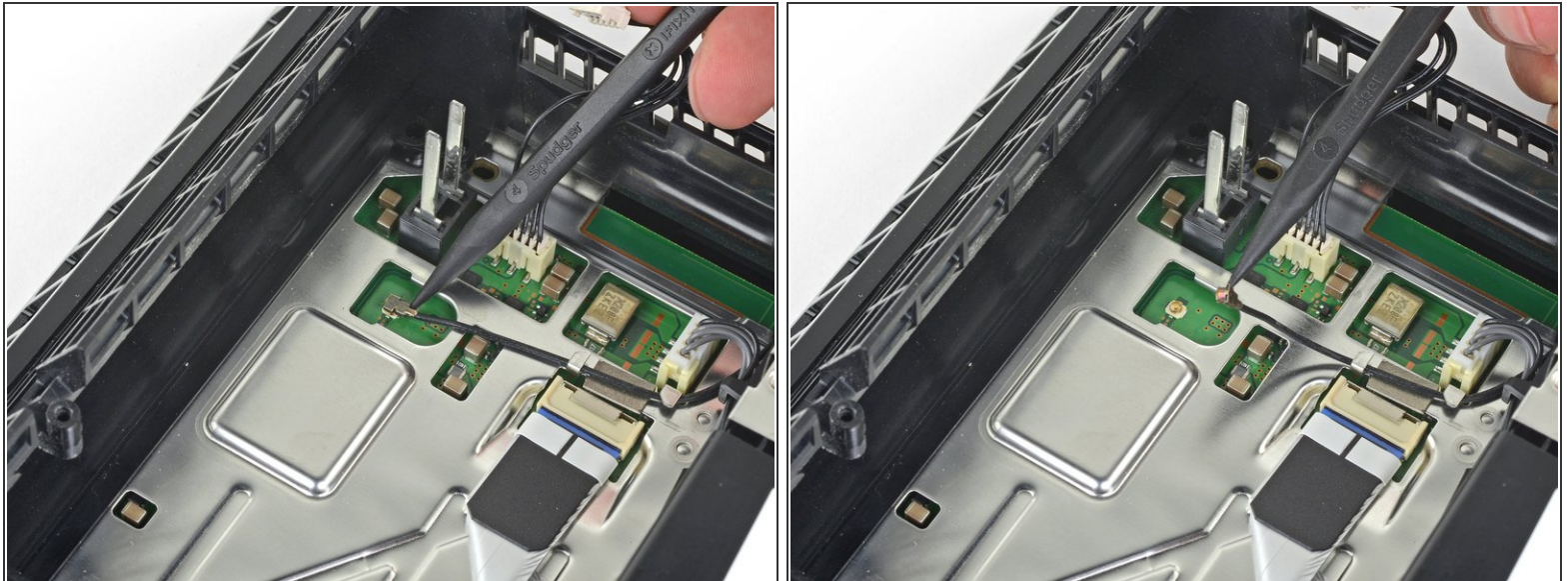


## Step 11



- Lift the power supply straight up and out of the PS4.
- ⓘ The power supply is held firmly in place by prongs on the left side. It may take multiple attempts to remove it.
- ☑ During reassembly, ensure the prongs are aligned, then press the power supply into place.

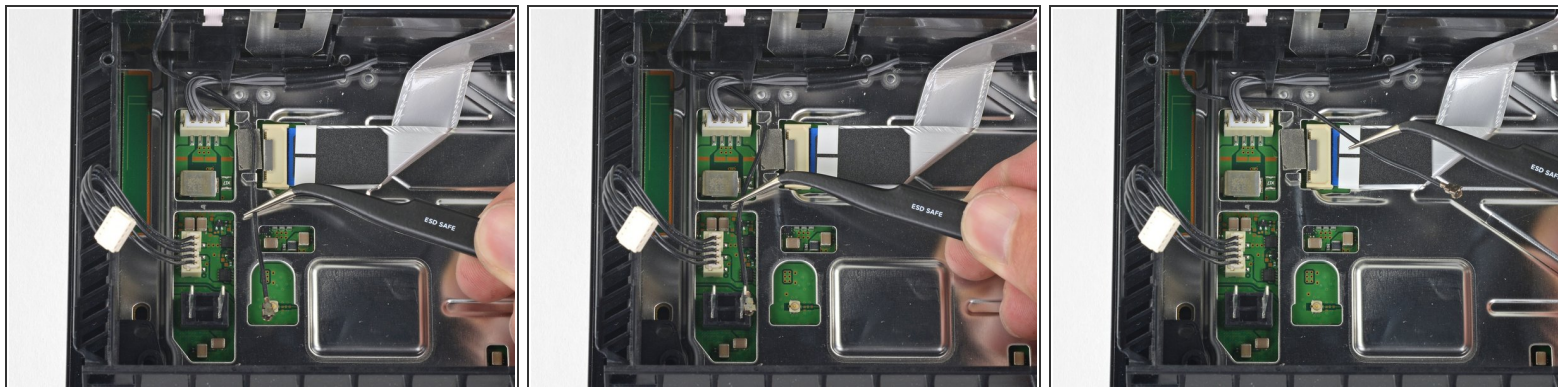
## Step 12 — Remove the Wi-Fi antenna



- Use the tip of a spudger to disconnect the antenna cable from the motherboard.

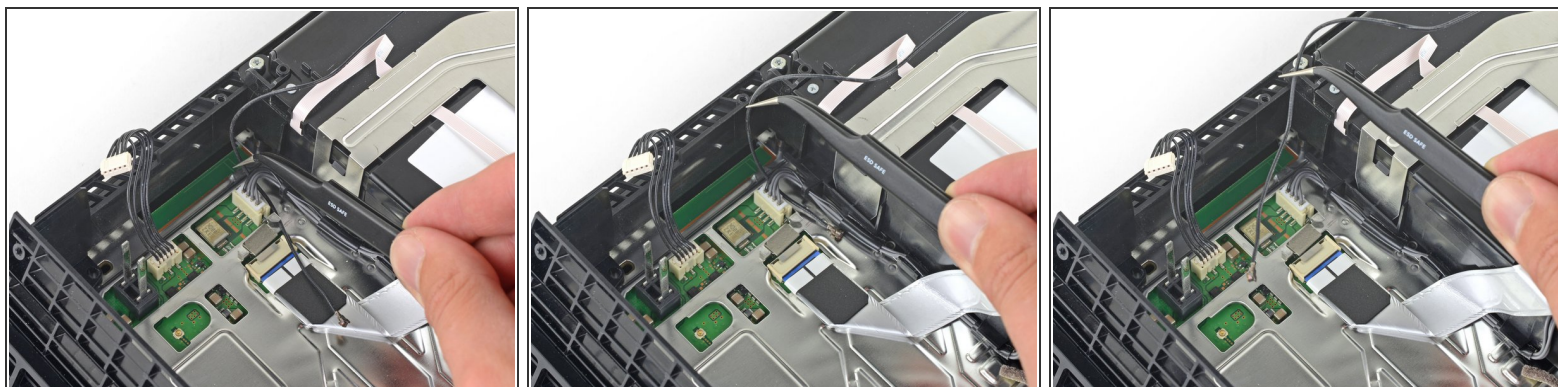


## Step 13



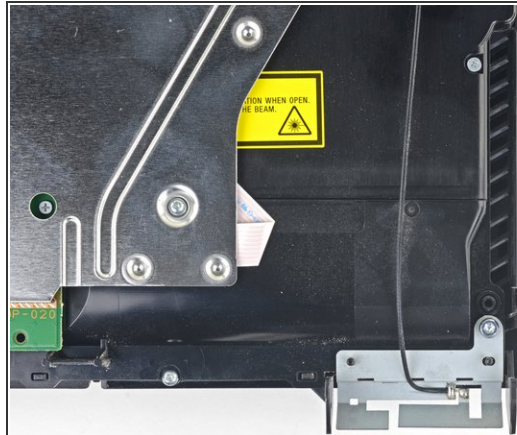
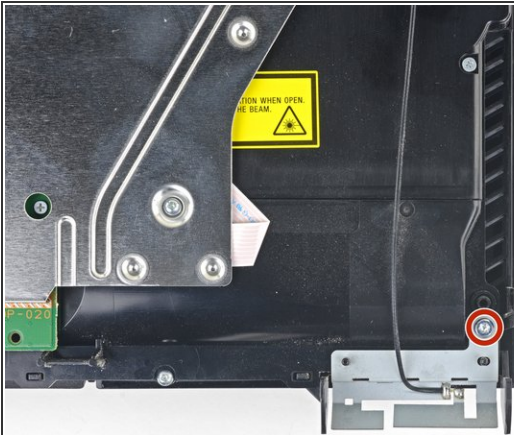
- Use a pair of tweezers or your fingers to grab the antenna cable and move it out from the cable guides.

## Step 14



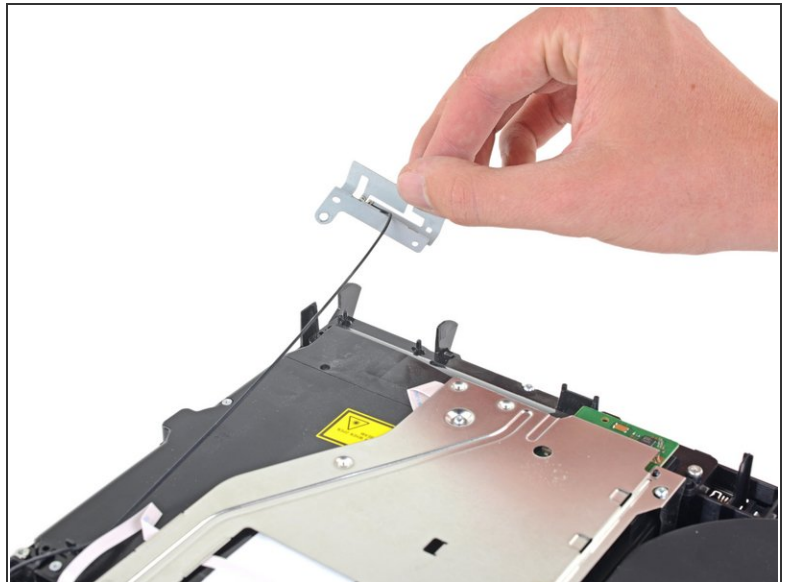
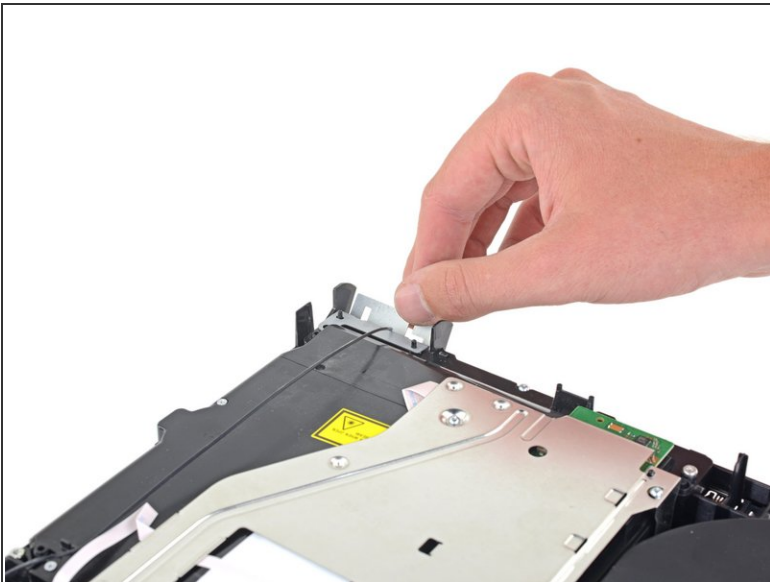
- Use a pair of tweezers or your fingers to thread the antenna cable out from underneath the optical drive cable.

## Step 15



- Remove the 9.7 mm Torx security screw securing the antenna.

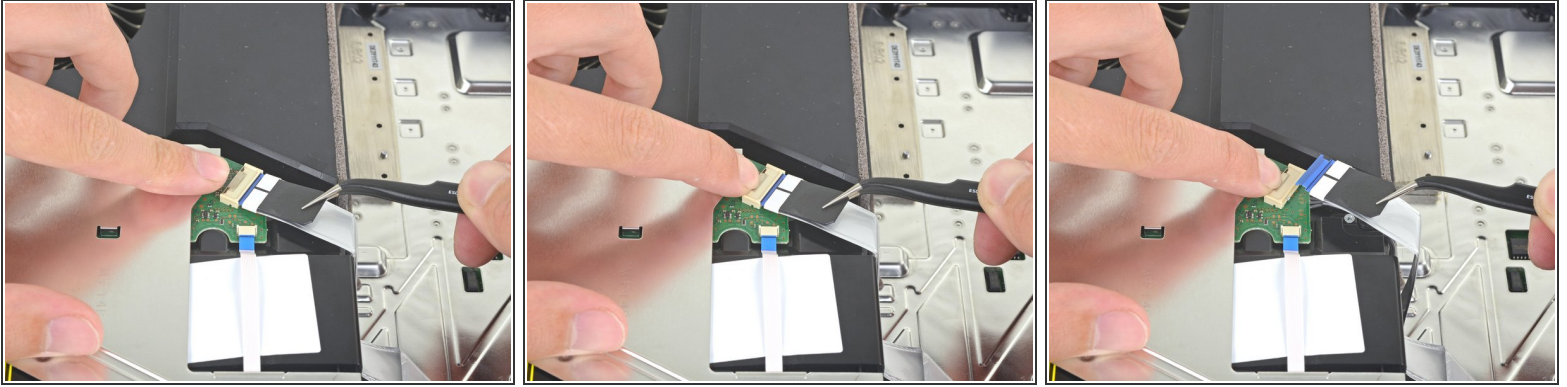
## Step 16



- Remove the Wi-Fi antenna.



## Step 17 — Disconnect the optical drive



- Use your fingernail to press down on the metal release lever of the ribbon cable on top of the optical drive.
  - Use your fingers or a pair of tweezers to disconnect the ribbon cable by pulling on the black tab.
- ☒ You do not need to press the metal lever when inserting the ribbon cable back in. You will hear a click once it is fully inserted.

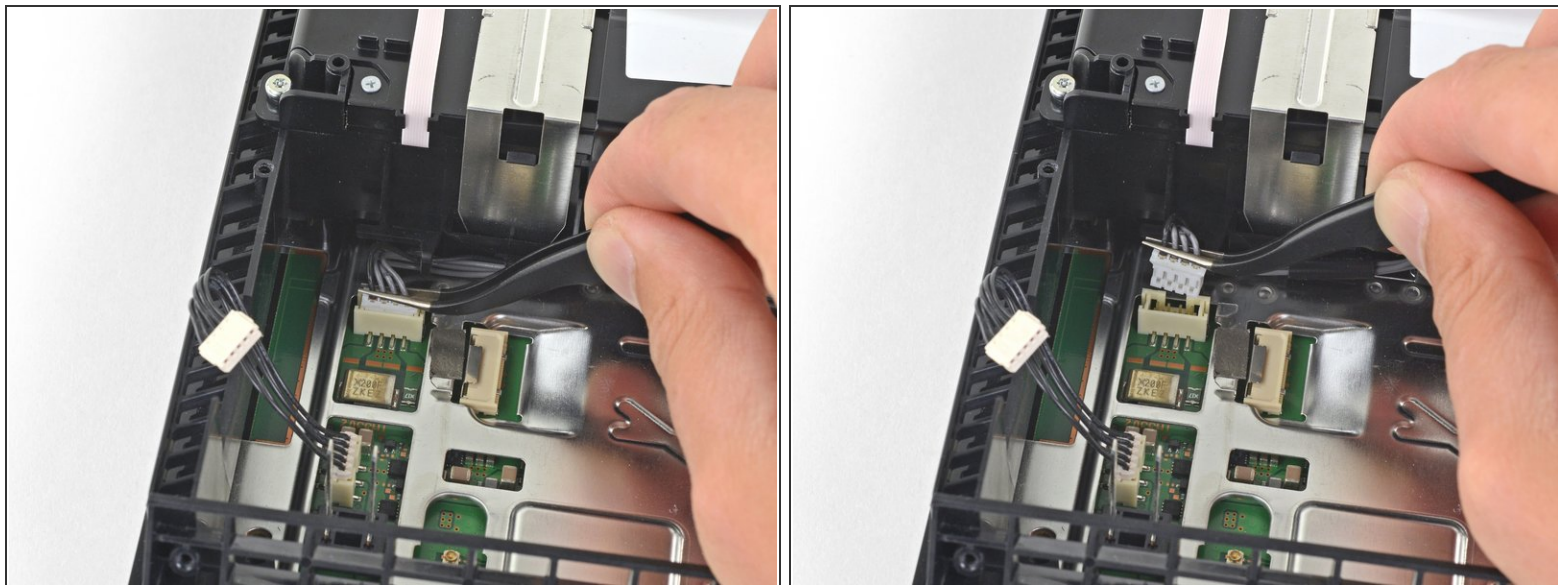
## Step 18



- Use your fingernail to press down the metal release lever for the ribbon cable connected to the motherboard.
  - Use your fingers or a pair of tweezers to disconnect the ribbon cable by pulling on the black tab.
  - Set the ribbon cable aside for reassembly.
- ☒ You do not need to press the metal lever when inserting the ribbon cable back in. You will hear a click once it is fully inserted.



## Step 19



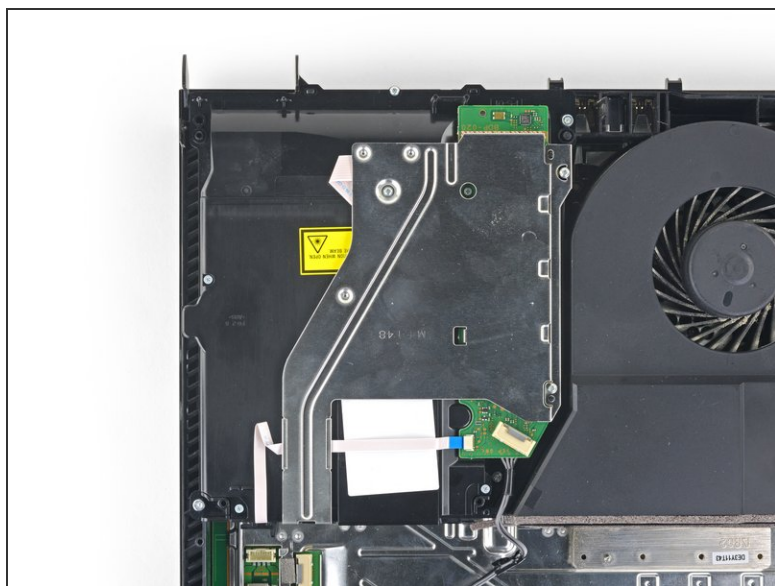
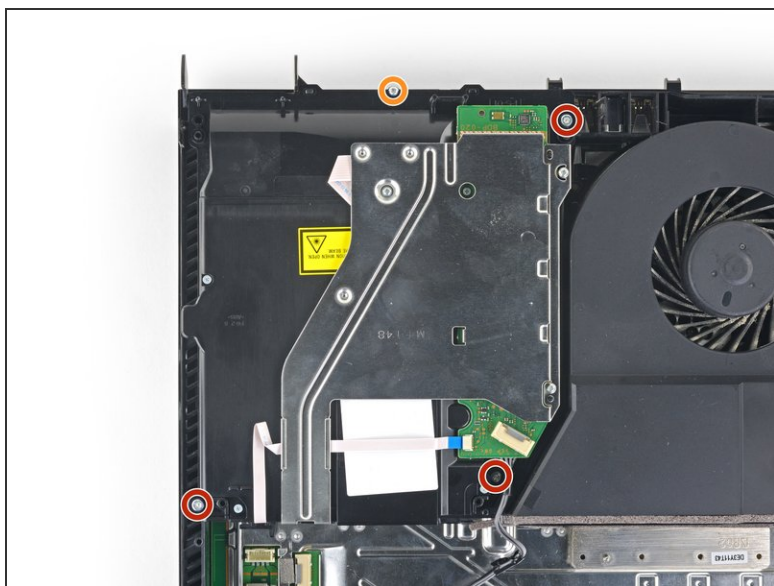
- Use your fingers or a pair of tweezers to disconnect the optical drive cable from the motherboard.

## Step 20



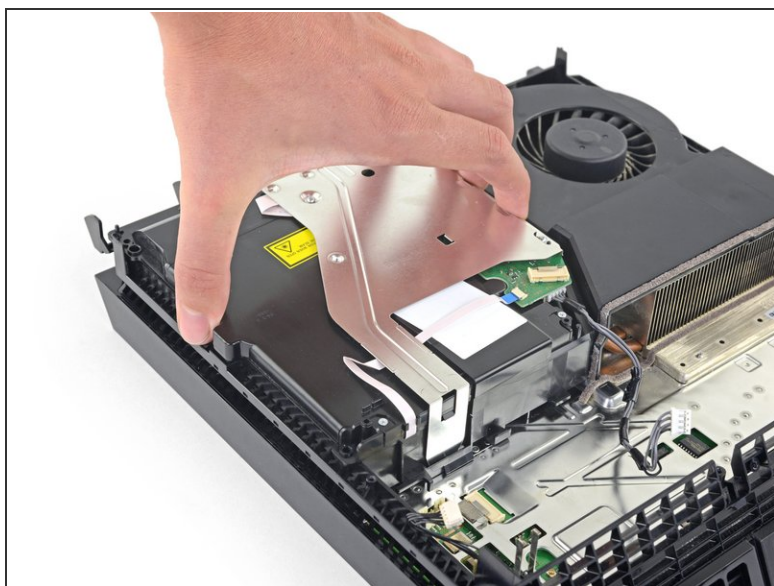
- Use your fingers or a pair of tweezers to remove the optical drive cable from the cable guides that hold it in place.

## Step 21 — Remove the optical drive



- Remove the four screws securing the optical drive.
  - Three 9.7 mm Torx screws
  - One 6.2 mm Phillips screw

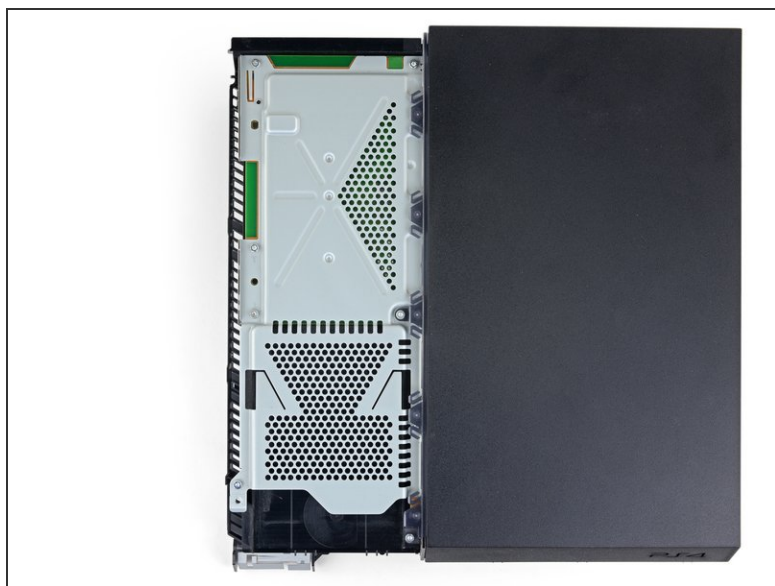
## Step 22



- Lift the optical drive straight up and out of the PS4.

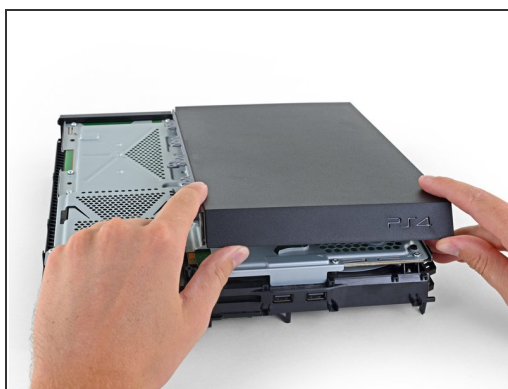


## Step 23 — Remove the upper case



- Remove the two 9.7 mm Torx screws securing the upper case.

## Step 24

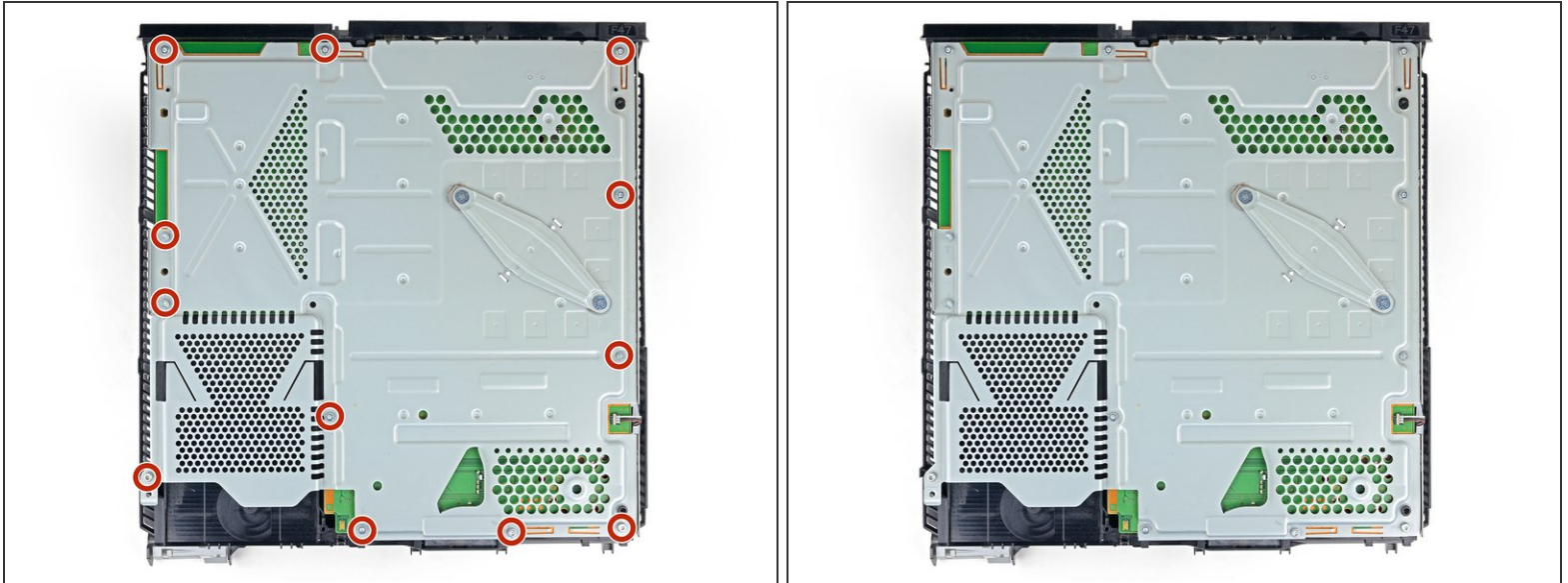


- Lift the upper case up and back to remove it from the PS4.

**i** The upper case is held in place by plastic tabs on the front side. It will take significant force to separate them.

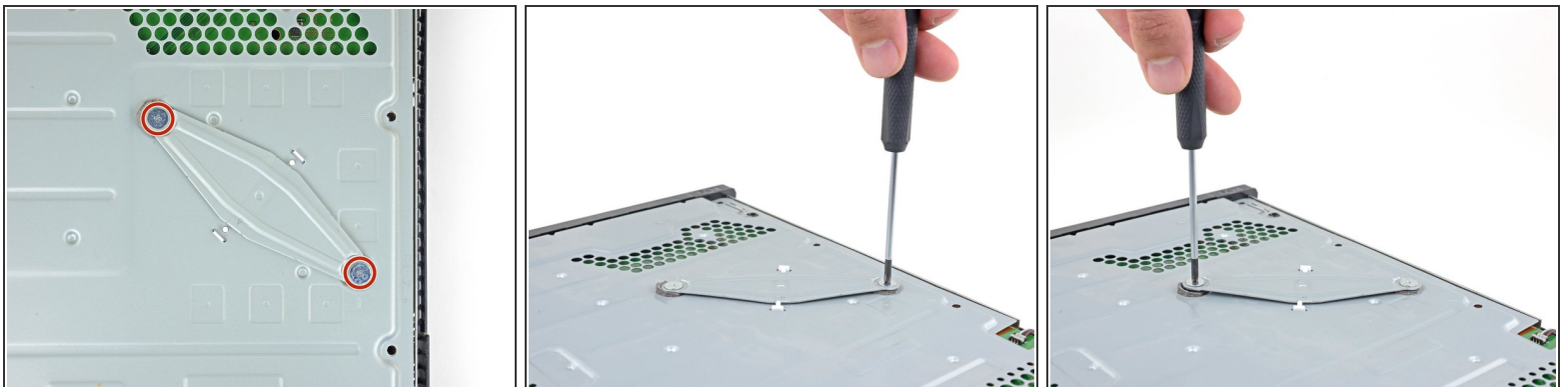


## Step 25 — Remove the upper EMI shield




- Remove the twelve 9.7 mm Torx screws securing the upper EMI shield.

## Step 26



 This step shows you how to properly unscrew the pressure plate.

- Remove the two 15.6 mm Phillips screws.
  - Gradually unscrew the pressure plate by turning each screw one half turn at a time.
  - Alternate between the two screws to maintain even pressure on the pressure plate.

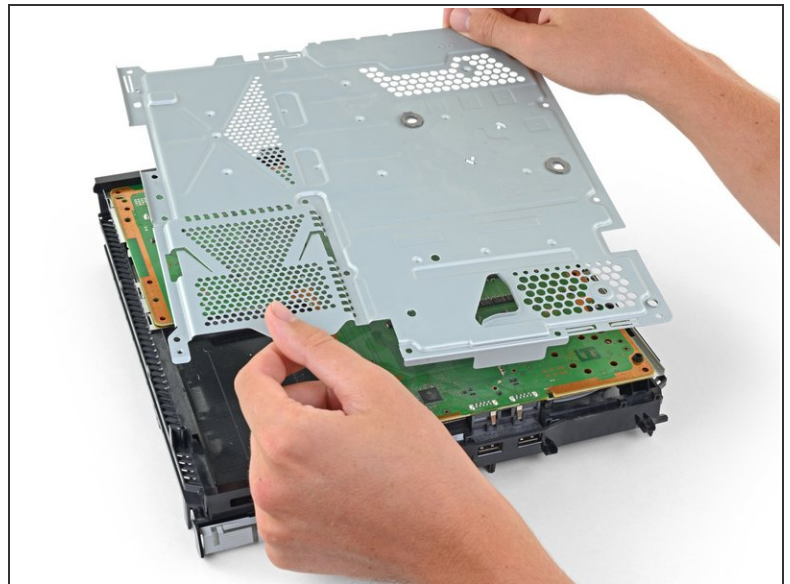
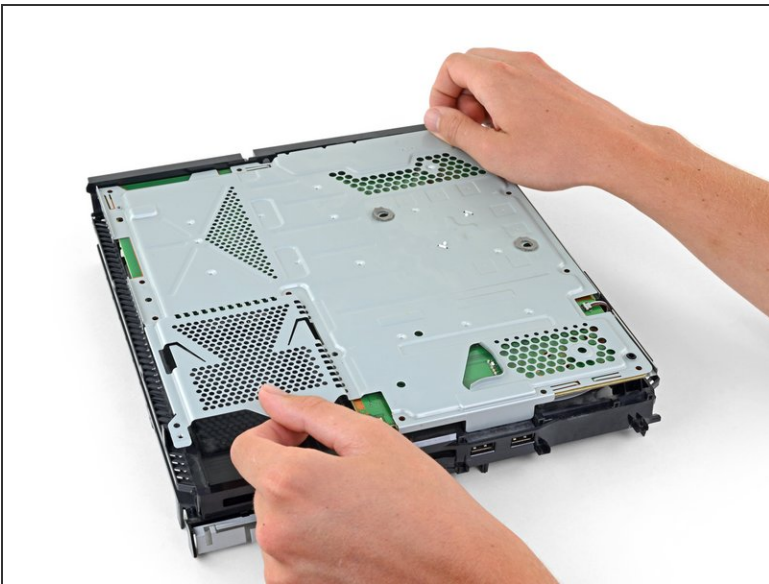
 **Do not** unscrew one side completely before unscrewing the other side or you may damage the processor.

## Step 27



- Remove the pressure plate.

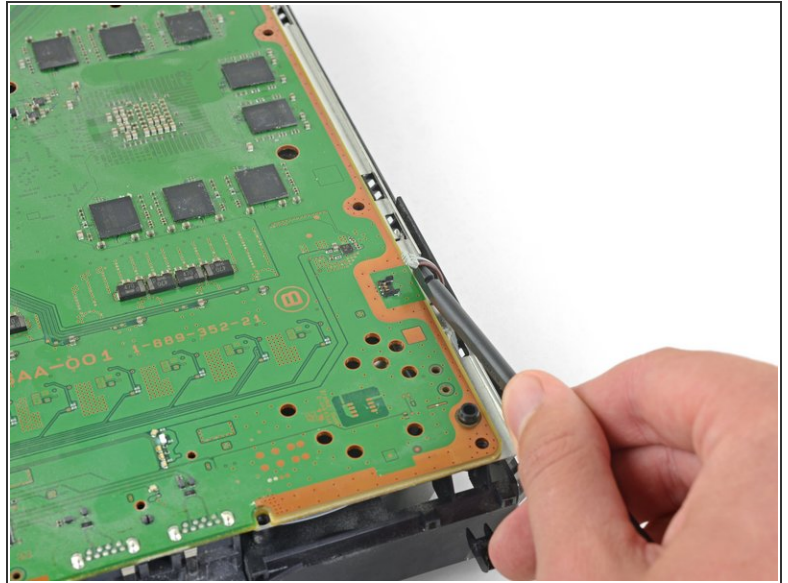
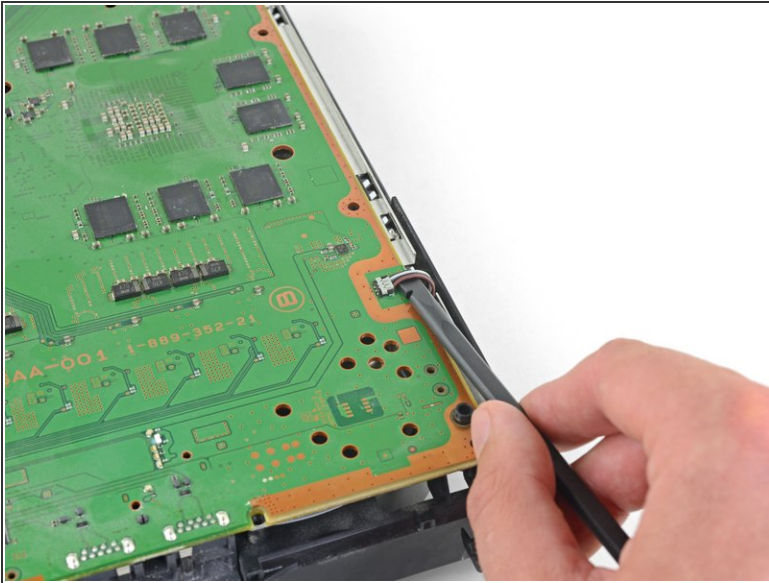
## Step 28



- Remove the upper EMI shield.

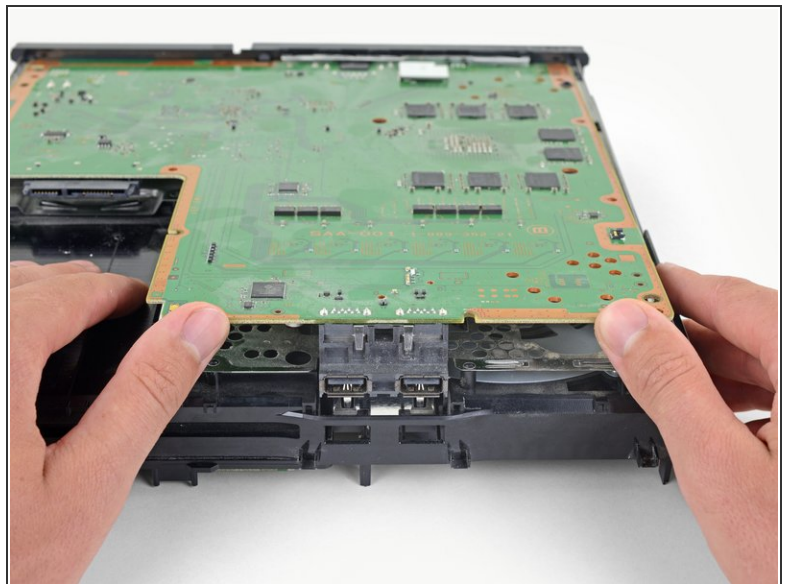
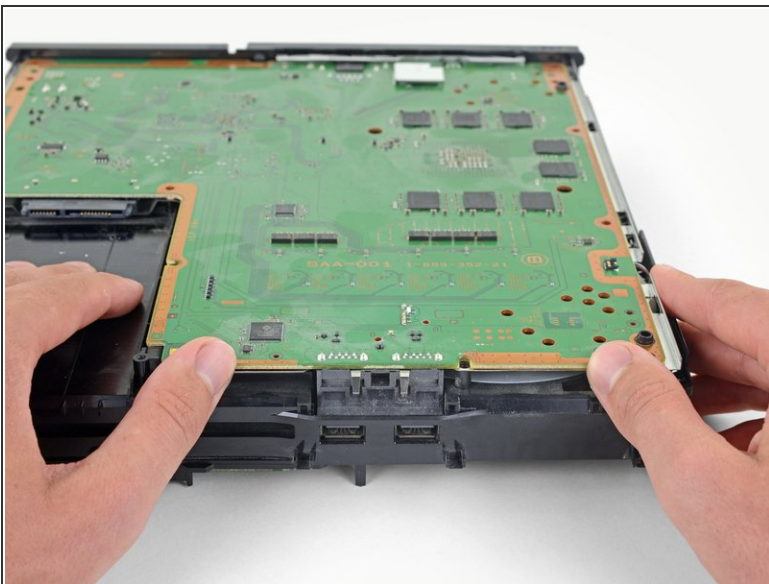


## Step 29 — Remove the motherboard



- Insert the flat end of a spudger in between the fan cable and the motherboard.
- Twist the spudger to lift the connector straight up and disconnect it from the motherboard.

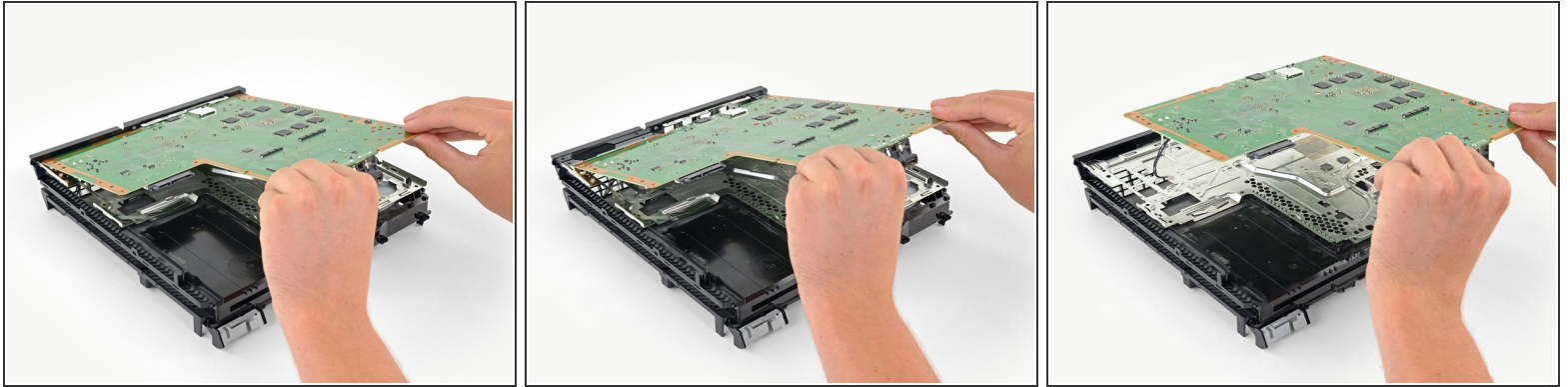
## Step 30



- Grab the edge of the motherboard on the front of the PS4.
- Lift the motherboard until the USB ports clear the PS4 case.



## Step 31



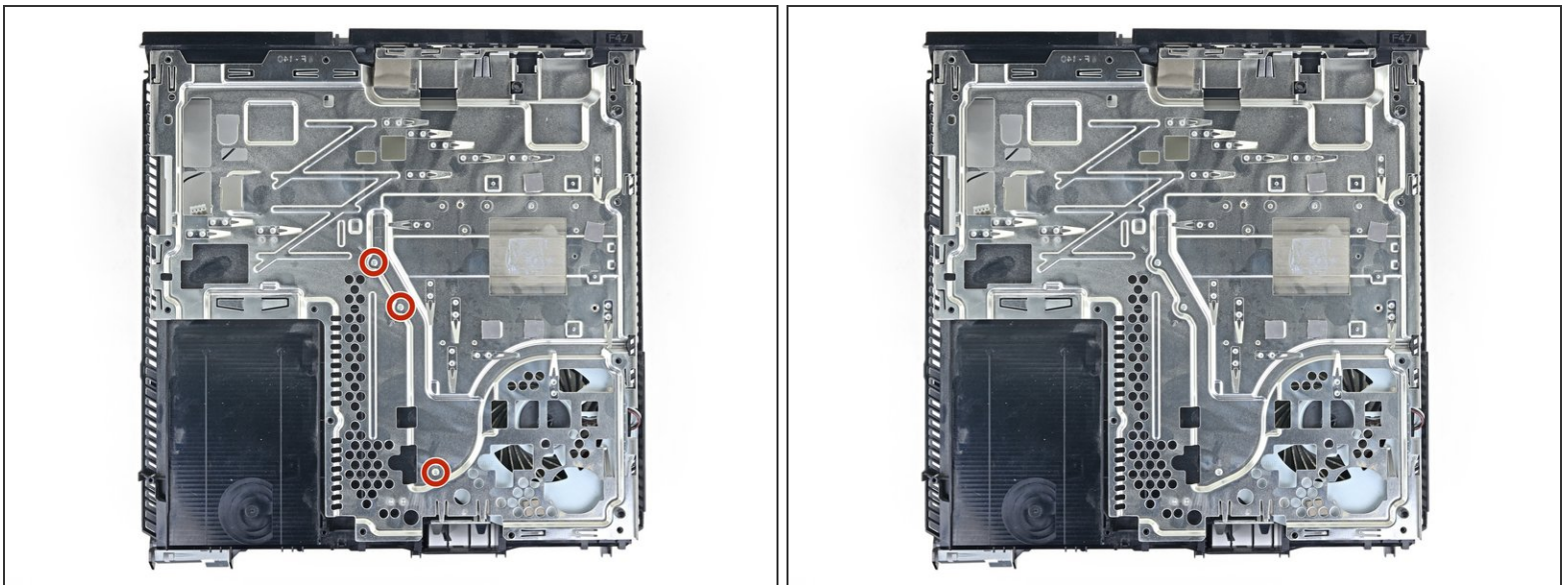
- Lift the motherboard out from the PS4.

- ☑ Apply a new layer of thermal paste to the processor before installing a motherboard using [this guide](#).

⚠ Failure to properly install new thermal paste will cause your PS4 to overheat.

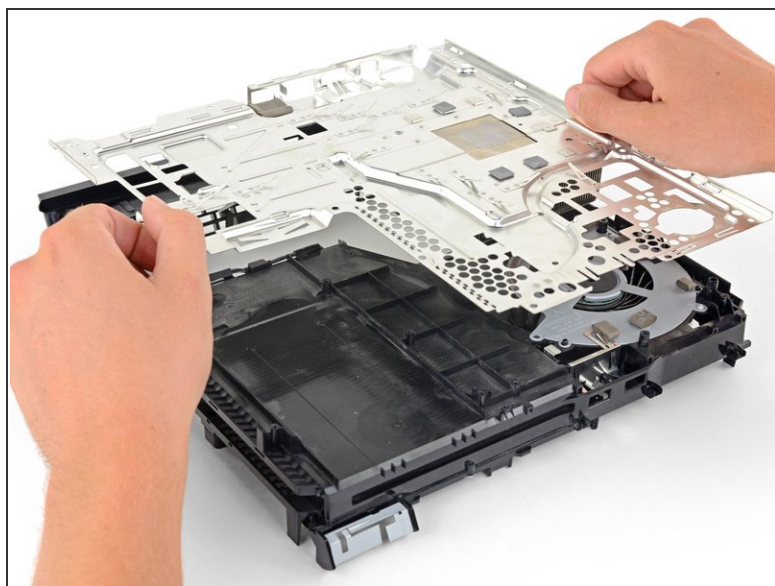
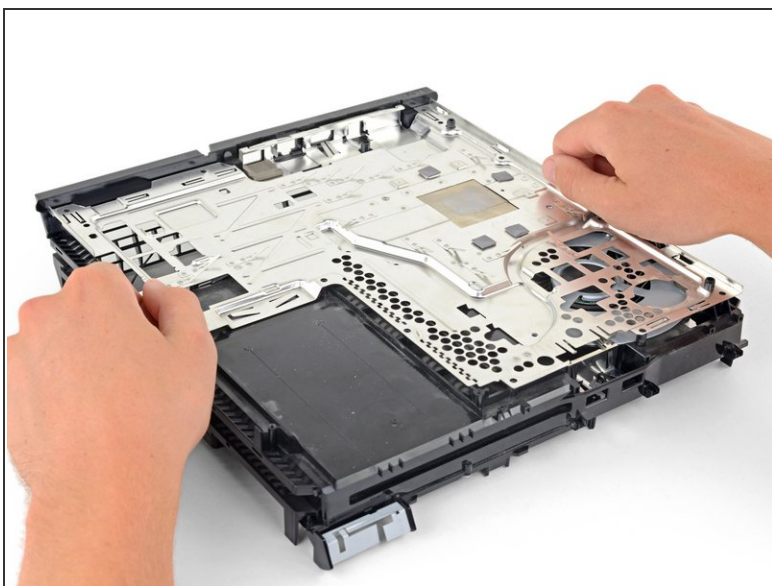
- ☑ Insert the I/O side of the Motherboard in first, then lower the other side in.

## Step 32 — Remove the lower EMI shield



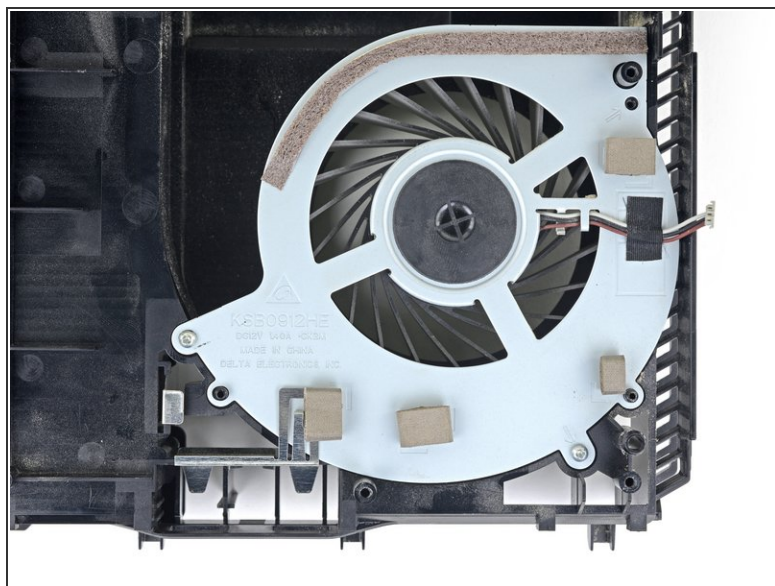
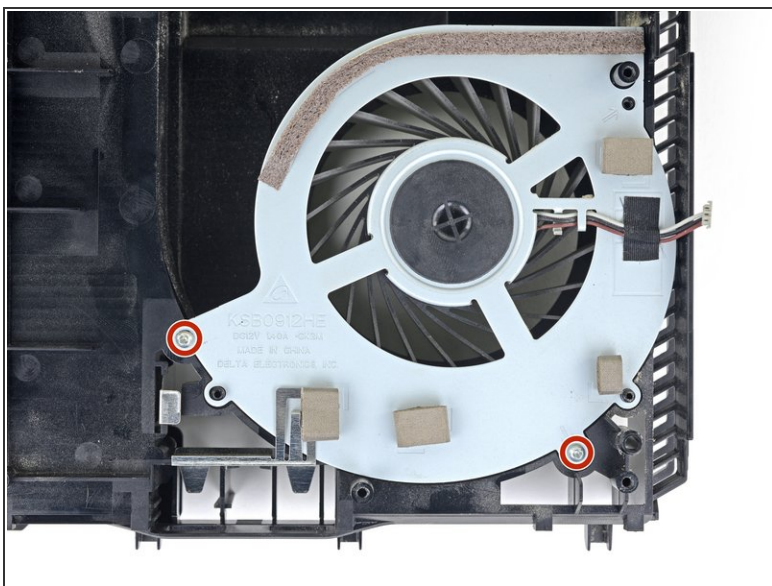
- Remove the three 6.2 mm Phillips screws from the lower EMI shield.

## Step 33



- Lift the lower EMI shield and heatsink straight up out of the PS4.

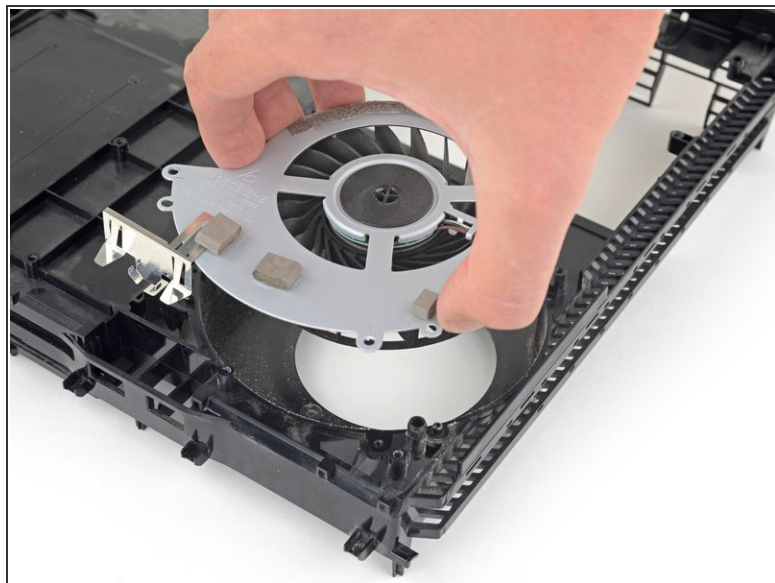
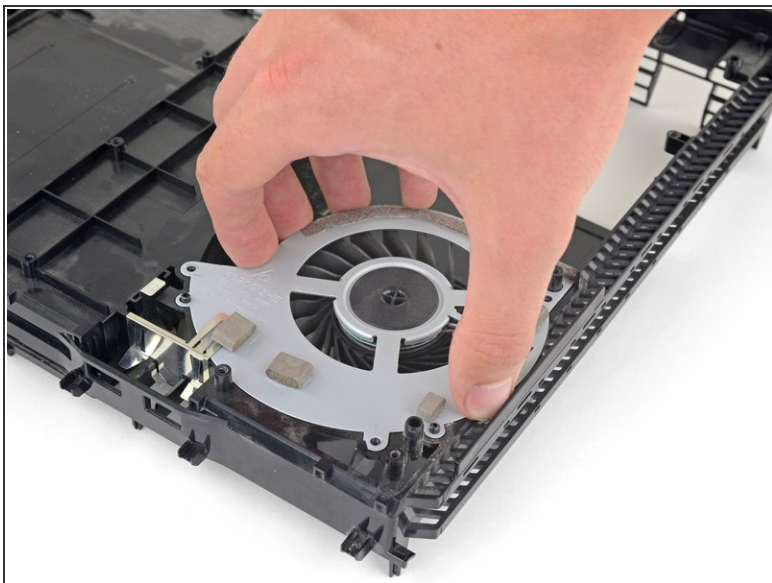
## Step 34 — Remove the fan



- Remove the two 6.2 mm Phillips screws from the fan.

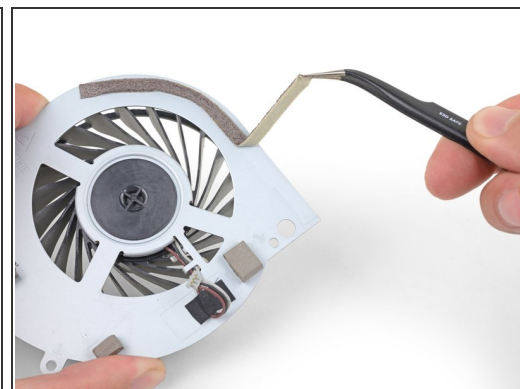
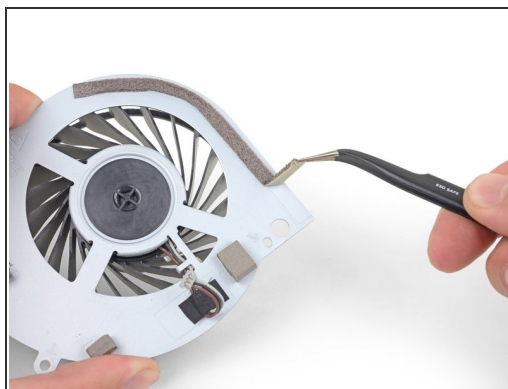
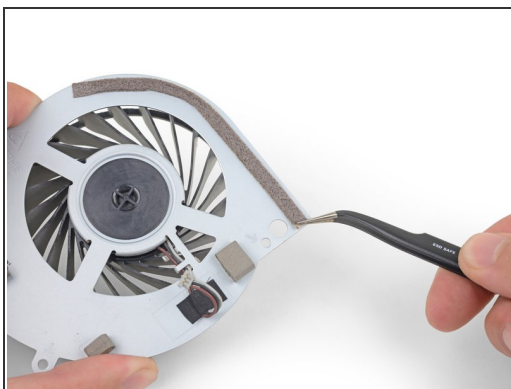


## Step 35



- Lift the fan straight up out of the PS4 shell.

## Step 36





- Use a pair of tweezers to carefully remove the foam padding strip from the fan.

- ☑ Install the foam padding strip to the new fan in the same location.




## Step 37



- Remove the foam padding pieces from the fan.
-  Use a hairdryer or heat gun to soften the adhesive if necessary.
-  Install these on the new fan in the same locations, using the adhesive left behind on the old fan as a reference.

## Step 38



- Remove the adhesive strip securing the fan cable.
-  Place the adhesive strip on the new fan, securing the cable in the same location.

**To reassemble your device, follow the above steps in reverse order.**

Take your e-waste to an [R2 or e-Stewards certified recycler](#).

Repair didn't go as planned? Check out our [Answers community](#) for troubleshooting help.

Compare your new replacement part to the original part—you may need to transfer remaining components or remove adhesive backings from the new part before installing.