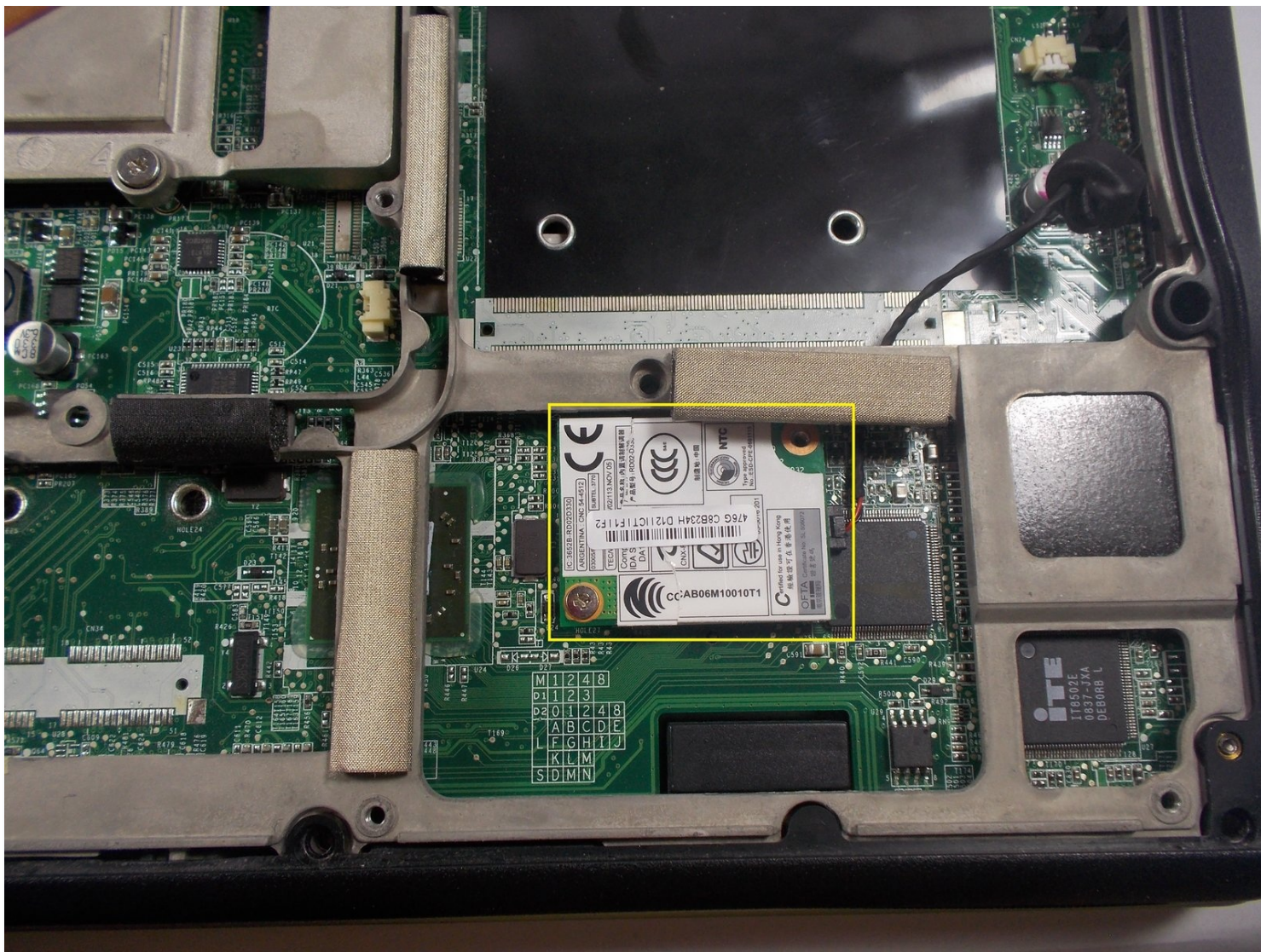




Gateway MD2614u Internal Modem Replacement

Written By: Nelson



TOOLS:

Spudger (1)

Large Needle Nose Pliers (1)

Phillips #00 Screwdriver (1)

Step 1 — Back Cover



- Place the laptop so the back cover is facing up.

Step 2



- Remove the 8 screws from the back cover using the Phillips #00 screwdriver.

Step 3



- Lift off the cover.

Step 4 — Internal Modem



- The internal modem will be located towards the bottom right of the laptop (highlighted with a yellow square).

Step 5



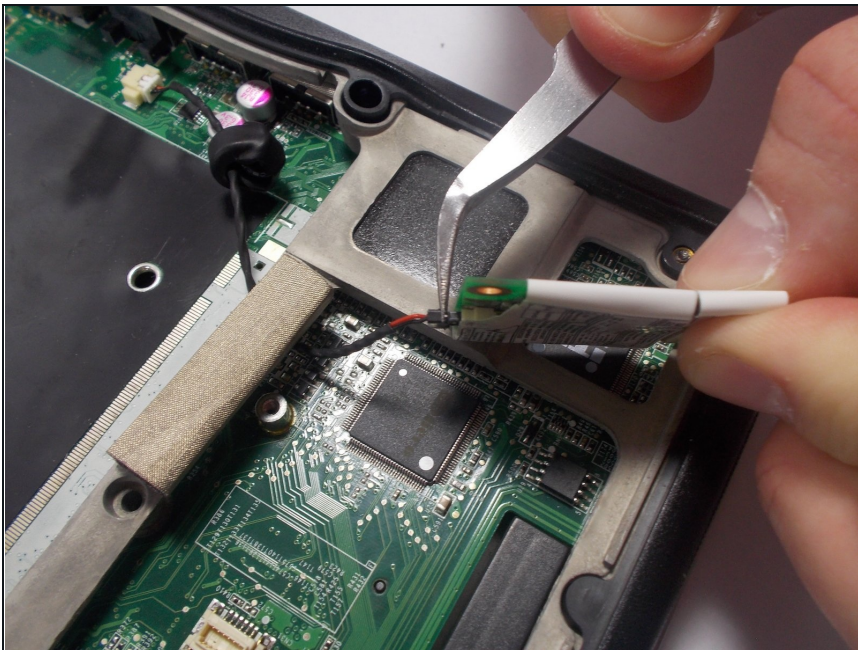
- Using a Phillips #00 screwdriver, unscrew both of the screws that are holding the modem in place.

Step 6



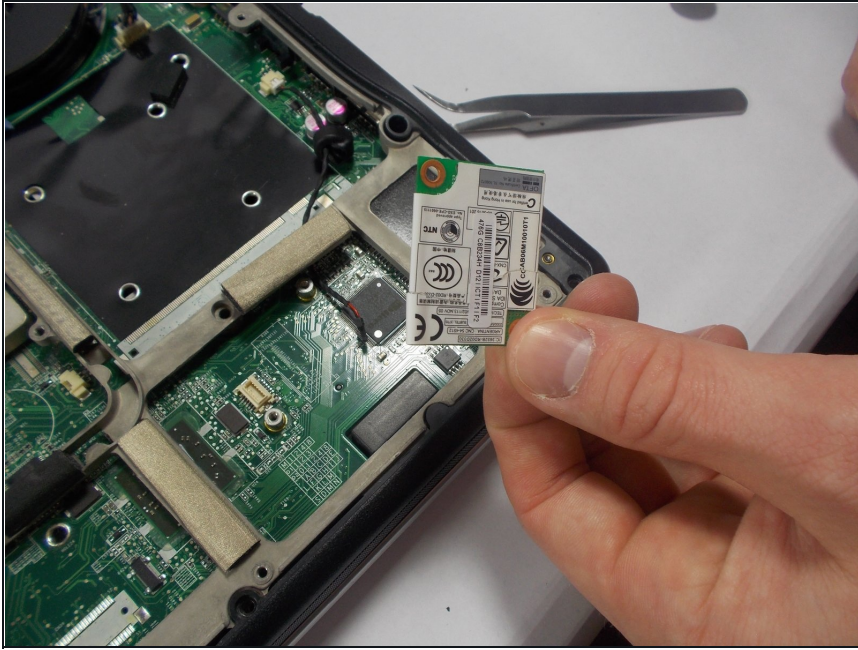
- Carefully pry the modem as to not damage any of the surrounding components

Step 7



- Using needle nose pliers, carefully detach the wire connecting the modem, by applying pressure to the black tabs away from the modem itself.

Step 8



- Success! You've removed the internal modem!

To reassemble your device, follow these instructions in reverse order.