



# iPad Air Wi-Fi Front Panel Replacement

Prereq to open the iPad.

Written By: Andrew Optimus Goldheart



# INTRODUCTION

Prereq to open the iPad.

## TOOLS:

iOpener (1)  
iFixit Opening Picks (Set of 6) (1)  
Suction Handle (1)  
Anti-Clamp (1)

## PARTS:

iPad Air, iPad 5, iPad 6 Adhesive Strips (1)

### Step 1 — iOpener Heating



- ① We recommend that you clean your microwave before proceeding, as any nasty gunk on the bottom may end up stuck to the iOpener.
- Place the iOpener in the center of the microwave.
- ⚠ For carousel microwaves: Make sure the plate spins freely. If your iOpener gets stuck, it may overheat and burn.

## Step 2



- Heat the iOpener for **thirty seconds**.
- Throughout the repair procedure, as the iOpener cools, reheat it in the microwave for an additional thirty seconds at a time.

⚠ Be careful not to overheat the iOpener during the repair. Overheating may cause the iOpener to burst. Do not attempt to heat over 100°C (212°F).

⚠ Never touch the iOpener if it appears swollen.

⚠ If the iOpener is still too hot in the middle to touch, continue using it while waiting for it to cool down some more before reheating. A properly heated iOpener should stay warm for up to 10 minutes.

## Step 3



- Remove the iOpener from the microwave, holding it by one of the two flat ends to avoid the hot center.

⚠ The iOpener will be very hot, so be careful when handling it. Use an oven mitt if necessary.

## Step 4 — Alternate iOpener heating method



ⓘ If you don't have a microwave, follow this step to heat your iOpener in boiling water.

- Fill a pot or pan with enough water to fully submerge an iOpener.
  - Heat the water to a boil. **Turn off the heat.**
  - Place an iOpener into the hot water for 2-3 minutes. Make sure the iOpener is fully submerged in the water.
  - Use tongs to extract the heated iOpener from the hot water.
  - Thoroughly dry the iOpener with a towel.
- ⚠ The iOpener will be very hot, so be careful to hold it only by the end tabs.
- Your iOpener is ready for use! If you need to reheat the iOpener, heat the water to a boil, turn off the heat, and place the iOpener in the water for 2-3 minutes.

## Step 5 — Front Panel



- If your display glass is cracked, keep further breakage contained and prevent bodily harm during your repair by taping the glass.
- Lay overlapping strips of clear packing tape over the iPad's display until the whole face is covered.
  - ⓘ This will keep glass shards contained and provide structural integrity when prying and lifting the display.
- Do your best to follow the rest of the guide as described. However, once the glass is broken, it will likely continue to crack as you work, and you may need to use a metal prying tool to scoop the glass out.

**⚠ Wear safety glasses to protect your eyes, and be careful not to damage the LCD screen.**

## Step 6



- Handling it by the tag, place the heated iOpener on the side of the iPad to the left of the home button assembly.
- Let the iOpener sit for at least a minute to soften the adhesive beneath the glass.

## Step 7



- ⓘ While the iPad looks uniform from the outside, there are delicate components under the front glass. To avoid damage, **only** heat and pry in the areas described in each step.
- As you follow the directions, take special care to avoid prying in the following areas:
    - Front-facing camera
    - Antennas
    - Display cables



## Step 8 — Anti-Clamp instructions



- ① The next three steps demonstrate the [Anti-Clamp](#), a tool we designed to make the opening procedure easier. **If you aren't using the Anti-Clamp, skip down three steps for an alternate method.**
- ① For complete instructions on how to use the Anti-Clamp, [check out this guide](#).
- Pull the blue handle backwards to unlock the Anti-Clamp's arms.
- Place an object under your iPad so it rests level between the suction cups.
- Position the suction cups near the middle of the left edge—one on the top, and one on the bottom.
- Hold the bottom of the Anti-Clamp steady and firmly press down on the top cup to apply suction.
- ① If you find that the surface of your iPad is too slippery for the Anti-Clamp to hold onto, [use tape](#) to create a grippier surface.



## Step 9



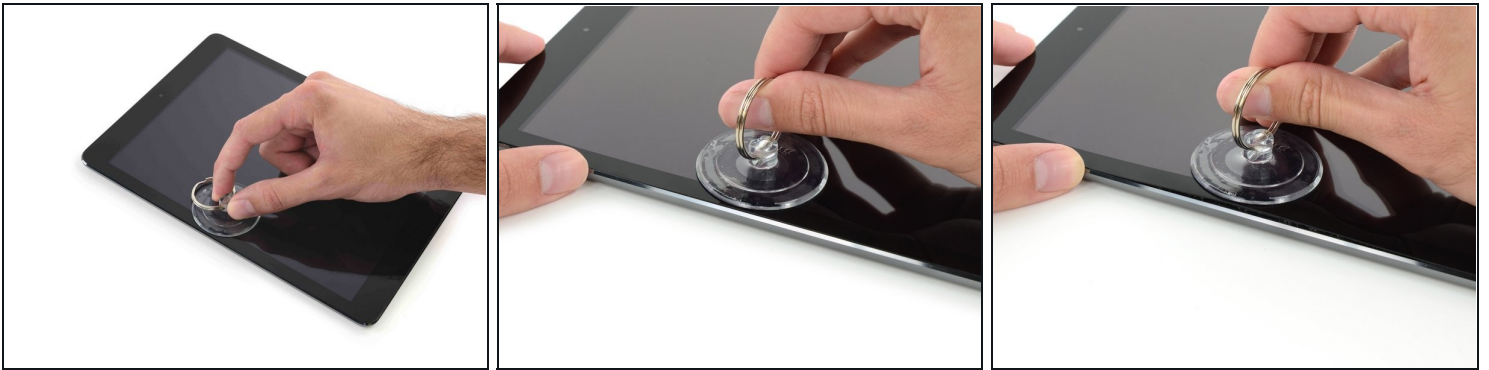
- Pull the blue handle forward to lock the arms.
- Turn the handle clockwise 360 degrees or until the cups start to stretch.
- Make sure the suction cups remain aligned with each other. If they begin to slip out of alignment, loosen the suction cups slightly and realign the arms.

## Step 10



- Wait one minute to give the adhesive a chance to release and present an opening gap.
- If your screen isn't getting hot enough, you can use a hair dryer to heat along the left edge of the iPad.
  - ① For complete instructions on how to use a hair dryer, [check out this guide](#).
- Insert an opening pick under the screen when the Anti-Clamp creates a large enough gap.
  - ① If the Anti-Clamp doesn't create a sufficient gap, apply more heat to the area and rotate the handle clockwise half a turn.
- ⚠ **Don't crank more than a half a turn at a time, and wait one minute between turns. Let the Anti-Clamp and time do the work for you.**
- **Skip the next two steps.**

## Step 11



- Carefully place a suction cup halfway up the heated side.
  - Be sure the cup is completely flat on the screen to get a tight seal.
- While holding the iPad down with one hand, pull up on the suction cup to slightly separate the front panel glass from the rear case.
- ① If your iPad's screen is badly cracked, covering it with a smooth layer of clear packing tape may help the suction cup adhere. Alternatively, use a strong piece of tape (such as duct tape) and [fold it into a handle](#).

## Step 12



- Place an opening pick in the gap opened by the suction cup.
  - ⚠ Don't insert the opening pick any deeper than the black bezel on the side of the display. Inserting the pick too far may damage the LCD.
- Pull the suction cup's plastic nub to release the vacuum seal and remove the suction cup from the display assembly.

## Step 13



- Reheat and replace the iOpener.

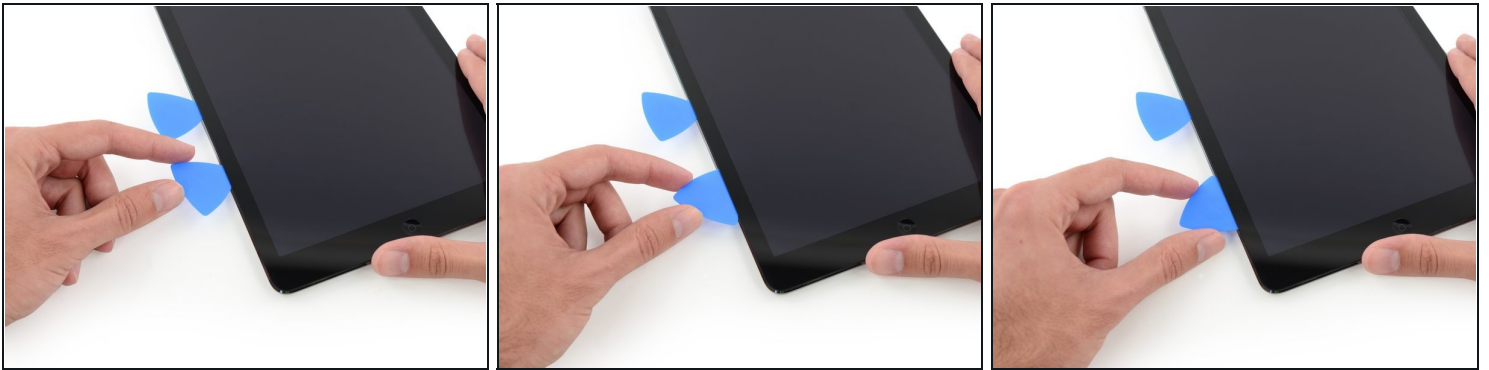
⚠ Be careful not to overheat the iOpener during the repair procedure. Always wait at least ten minutes before reheating the iOpener.

## Step 14



- Place a second opening pick alongside the first and slide the pick down along the edge of the iPad, releasing the adhesive as you go.

## Step 15



- Continue moving the opening pick down the side of the display to release the adhesive.
- If the opening pick gets stuck in the adhesive, "roll" the pick along the side of the iPad, continuing to release the adhesive.

## Step 16



- Take the first pick you inserted and slide it up toward the top corner of the iPad.
- If you can see the tip of the opening pick through the front glass, don't panic—just pull the pick out just a little bit. Most likely, everything will be fine, but try to avoid this as it may deposit adhesive on the front of the LCD that is difficult to clean off.

## Step 17



- Reheat the iOpener and place it on the top edge of the iPad, over the front-facing camera.

**⚠ Be careful not to overheat the iOpener during the repair procedure. Wait at least ten minutes before reheating the iOpener.**

- ① If you have a flexible iOpener, you can bend it to heat both the upper left corner and the upper edge at the same time.

## Step 18



- Slide the opening pick around the top left corner of the iPad to separate the adhesive.



## Step 19



- Slide the opening pick along the top edge of the iPad, stopping just before you reach the camera.
- ① The third image shows where the front-facing camera and housing are in the iPad.
  - ⚠️ Avoid sliding the opening pick over the front facing camera, as you may smear adhesive onto the lens or damage the camera. The following steps will detail how to best avoid disturbing the front facing camera.

## Step 20



- Pull the pick out slightly, and slide the very tip gently along the top of the front-facing camera section of the top edge.



## Step 21



- Leave the opening pick in the iPad slightly past the front-facing camera.
- Take a second pick and insert it to the left of the camera, and then slide it to the corner of the iPad to finish cutting the adhesive on that edge.

## Step 22



- Insert the previous pick deeper into the iPad and slide it away from the camera toward the corner.

## Step 23



- Leave the three picks in the corners of the iPad to prevent re-adhering of the front panel adhesive.
- Reheat the iOpener and place it on the remaining side of the iPad—along the volume and lock buttons.

## Step 24



- Slide the opening pick around the top right corner of the iPad, releasing the adhesive there.
- ① Leave this pick in place to keep the adhesive from re-sealing itself, and grab a new pick for the next step.

## Step 25



- Insert a new opening pick and slide it to the middle of the right edge of the iPad, releasing the adhesive as you go.

**⚠ The display cables are located approximately halfway from the bottom of the iPad. Stop sliding the pick when you get ~4.5" from the bottom of the iPad.**

## Step 26



- Leave the opening picks in place, and set the reheated iOpener on the home button end of the iPad.

## Step 27



- Slide the lower left pick to the lower left corner to cut the adhesive on that corner.
- Leave the pick at the corner. Do not pry any farther, and do not remove the pick from the iPad.
- ① The third image shows the two antennas and the home button cavity in the lower case of the iPad.
  - The following steps will direct you where to pry to avoid damage to these components. Only apply heat and pry where directed.

## Step 28



- ① Leave the pick from the last step in place to prevent the adhesive from re-sealing.
- With a new pick, slice gently over the left-hand antenna, stopping before the home button.
  - ⚠ Only slide the pick from the outer edge toward the center of the iPad. Do not move the pick back toward the outer edge, as moving in this direction may damage the antenna.
- ① If you need to slide the pick over the lower section more than once, remove it and re-insert at the outer edge, and slide inwards.
- Leave the pick in place before moving on.

## Step 29



- Take a new pick and slip it in to the right of the previous pick.
- Slide across the home button and right-hand antenna using **only the very tip** to remove the adhesive.

## Step 30



- With the adhesive loosened, you can now insert the pick near the right-hand corner. Slide the pick to the left, and stop just short of the Home button.  
**⚠ Just like with the left antenna, only slide from the outer edge toward the center. Reversing this direction may damage the antenna.**

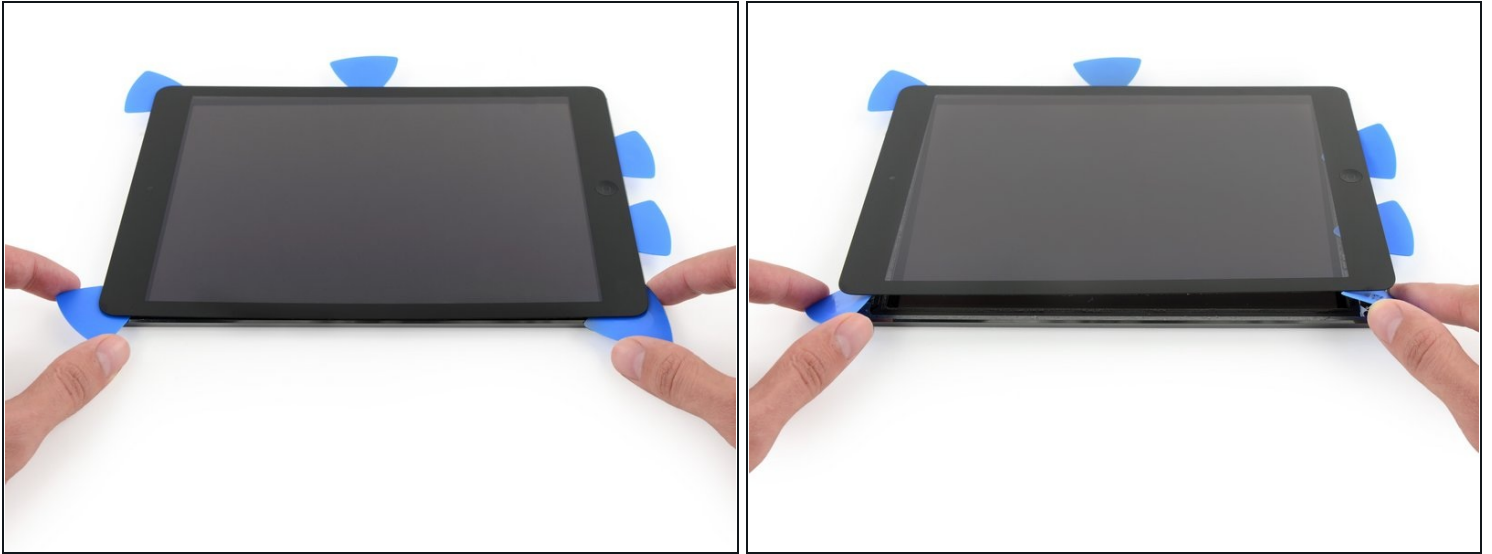
## Step 31



- Reheat and reapply the iOpener to the volume control side of the iPad.



## Step 32



**⚠ Be very careful with this step.** Take your time and ensure the adhesive is hot and soft, and that you've been through all of the adhesive with an opening pick. Don't be afraid to stop and reheat.

- On the side of the iPad opposite the volume controls, you should have a pick lodged into each corner. Twist the picks to lift the glass slightly, separating the last of the adhesive along the display cable edge.
- ① If you encounter a significant amount of resistance, leave the picks in place, reheat, and reapply the iOpener to the problem areas.



## Step 33



- Lift slowly and gently to further detach the adhesive along the display cable edge.

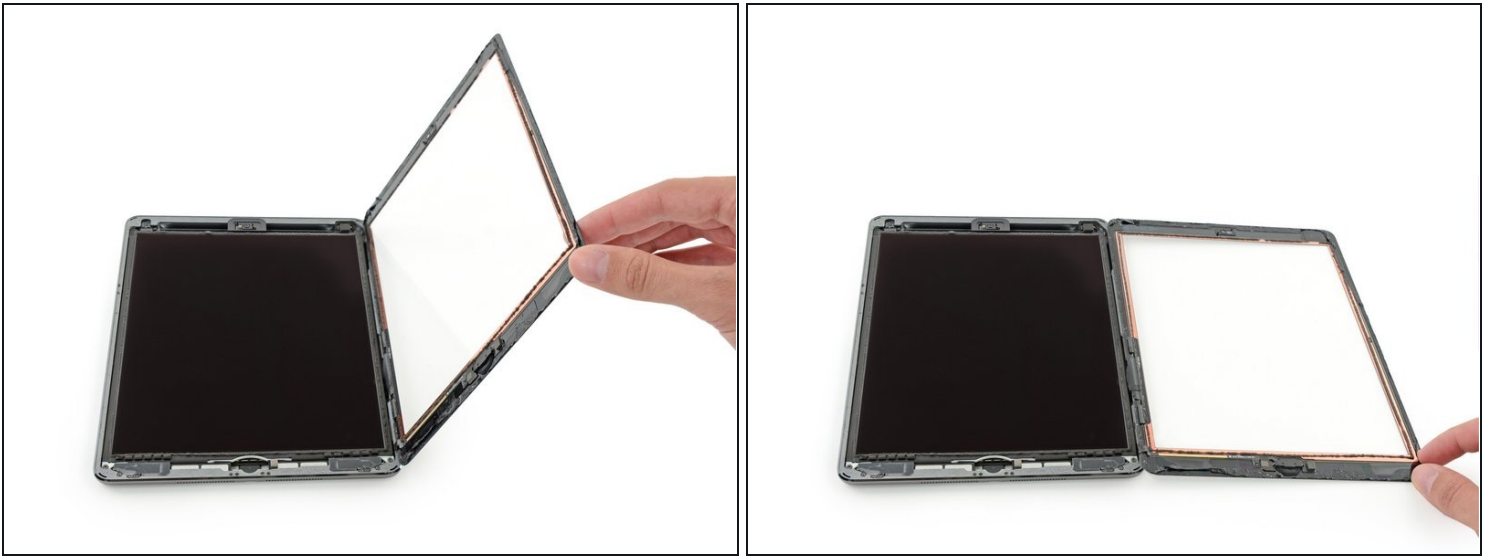
## Step 34



- While supporting the front panel glass, use an opening pick to cut the last of the adhesive.

⚠ Be very careful not to cut or damage any of the display cables.

## Step 35



- Once all of the adhesive has been separated, open the glass panel like a page in a book and rest it on your workspace.
- ☑ During reassembly, clean the remains of the adhesive from the case (and the front glass if you are re-using it) with isopropyl alcohol, and replace the adhesive using our [display adhesive application guide](#) and [pre-cut adhesive strips](#).
- ☑ It's easy to pinch a flex cable between the front glass and the iPad's frame during reassembly. Be mindful of the flex cables and make sure they gently fold and tuck under the frame. If the folds in a flex cable are pressed completely flat, it may be damaged beyond repair.

---

To reassemble your device, follow these instructions in reverse order.