



# HP Pavilion dv5000 Power Supply Port Replacement

Written By: Thomas Leman





## TOOLS:

Tournevis cruciforme #00 (1)

Tournevis cruciforme #0 (1)

Outil pour ouvrir iFixit (1)

Tapis de projet magnétique (1)

### Step 1 — Battery



**⚠** Turn off the computer, and unplug it from all external power sources.

- Lay the computer face-down on a flat surface. Orient the computer to match the image.
- Locate the battery release switch, as indicated in the image by the red rectangle. Slide the switch from right to left, and remove the battery.

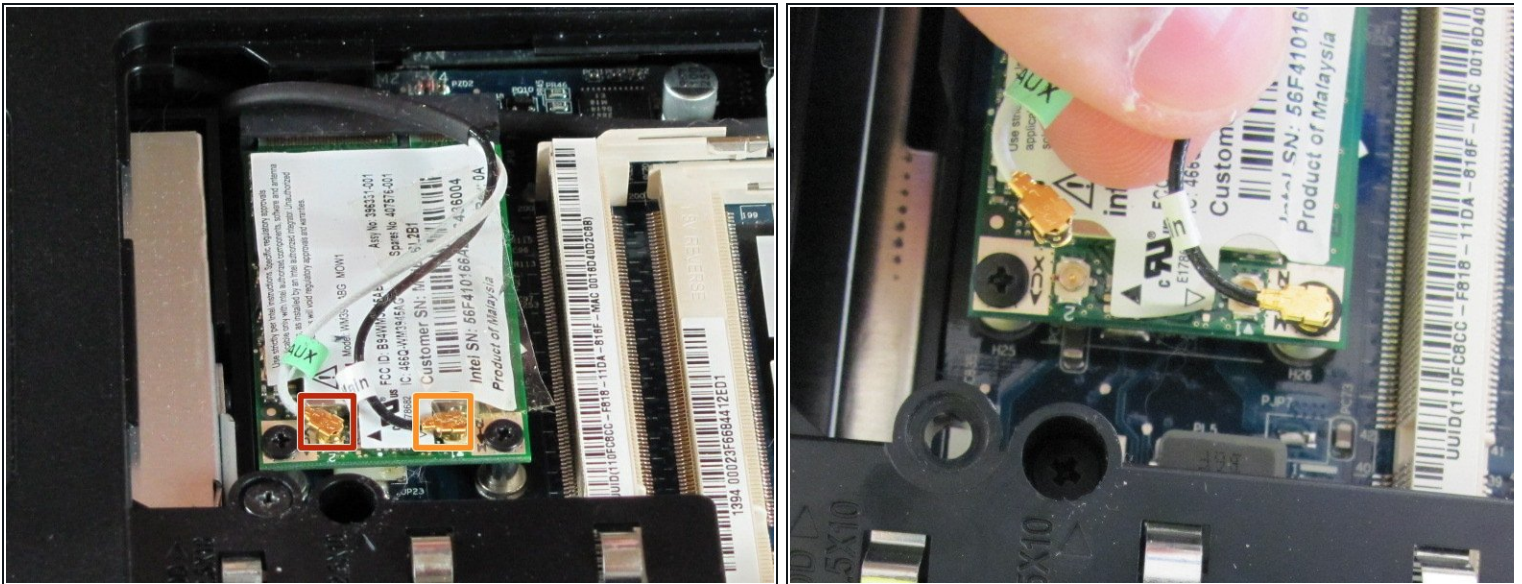


## Step 2 — RAM Cover



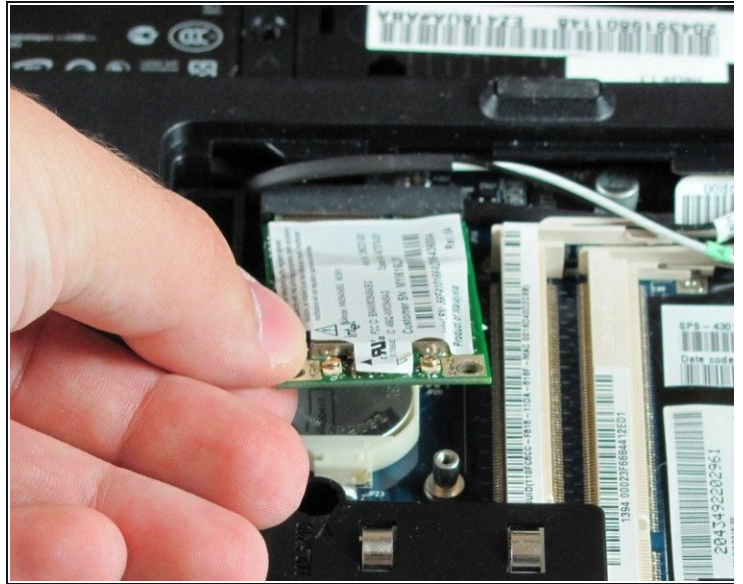
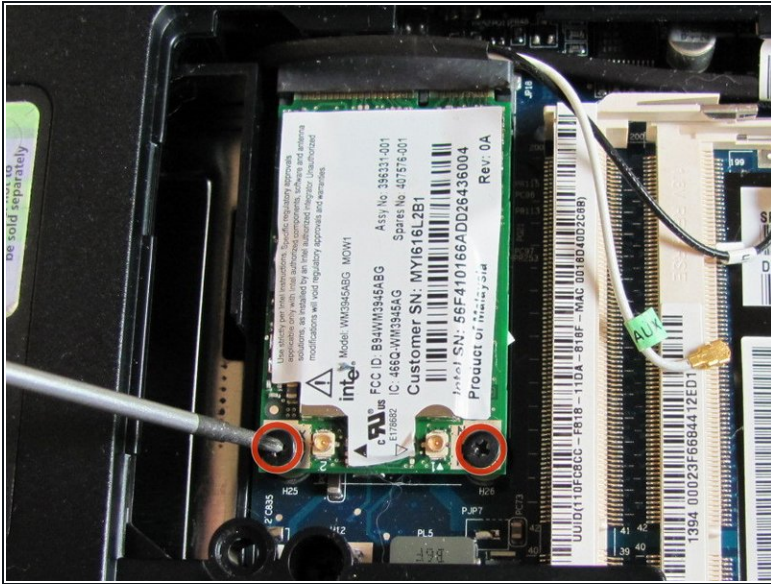
- Remove the two 5mm Phillips screws on the right side of the RAM cover.
- Lift the right side of the RAM cover, and remove it.

## Step 3 — Wifi Card



- Disconnect the antenna leads from the wifi card by lifting the gold ends of the wires off the prongs on the wifi card.
- The white wire connects to the AUX terminal.
- The black wire connects to the MAIN terminal.

## Step 4



- Remove the two 6.0mm Phillips screws from the wifi card.
- Remove the wifi card.

## Step 5 — Hard Drive



- Locate the hard drive cover. Note that in this image, the RAM cover is still in place.

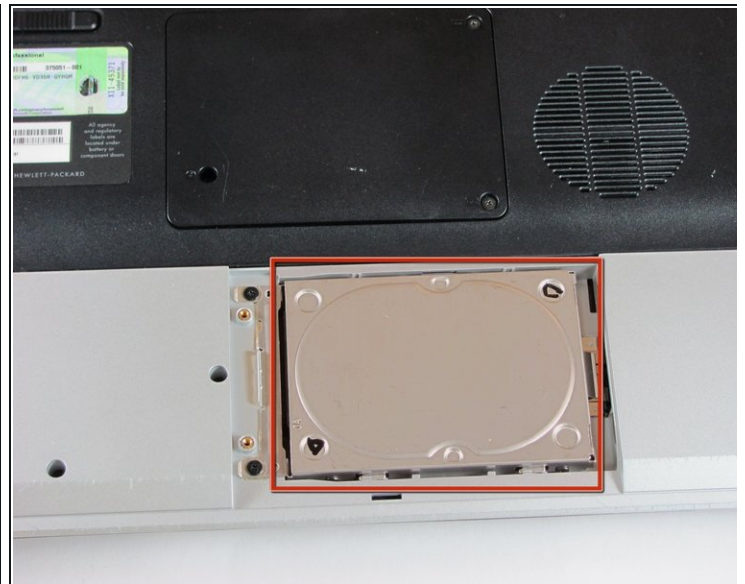


## Step 6



- Remove the two screws securing the hard drive cover.

## Step 7



- Remove the hard drive cover.

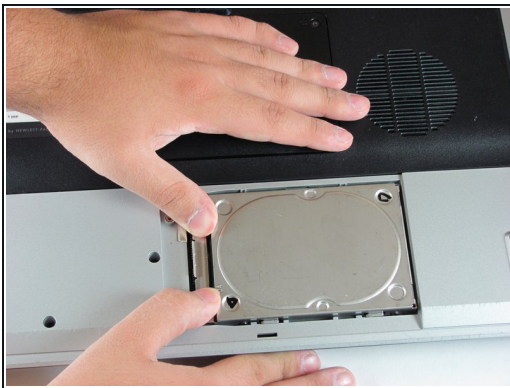
**i** The hard drive is now accessible.

## Step 8



- Remove the two 5.0mm screws securing the hard drive bracket.

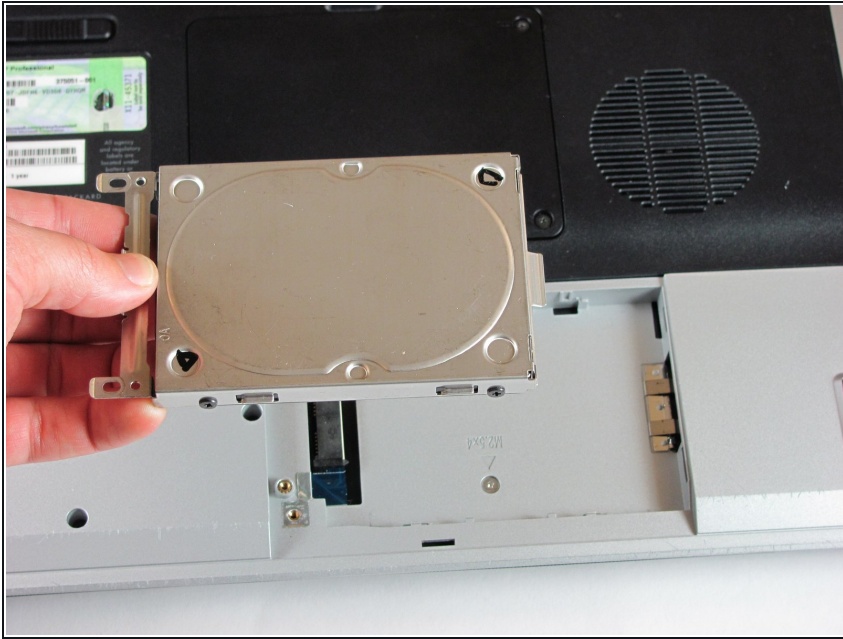
## Step 9



- Slide the hard drive to the right until the edge of the hard drive is flush with the computer frame.
- Lift the hard drive out of the hard drive bay, left side first.



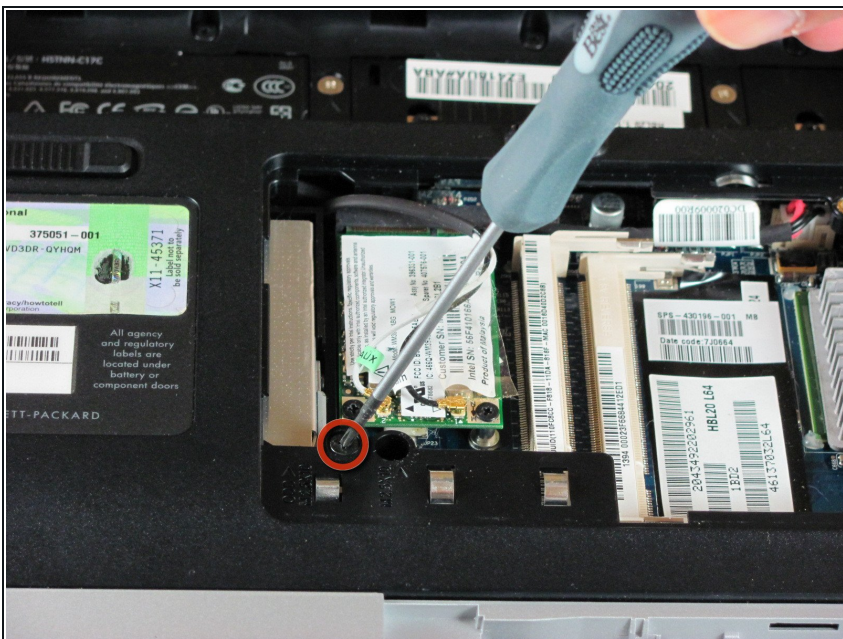
## Step 10



- Remove the hard drive.

**i** If you are replacing the hard drive, remove the four additional screws (two on each side) securing the metal shield to the hard drive. Then, remove the shield from the drive.

## Step 11 — Optical Drive



- Remove the 11.0mm screw securing the optical drive to the computer.

## Step 12



- Locate the optical drive. The optical drive is located on the left side of the RAM bay.
- Press the exposed edge of the optical drive gently with the spudger until the drive releases from the computer frame.
- Pull the optical drive completely out of the computer frame.

## Step 13 — Keyboard



- Remove the two 11.0mm screws at the corners on either side of the battery compartment.
- Remove the three 6.0mm screws.
- Remove the two 5.0mm screws.
- Remove the 6.0mm screw in the middle of the battery compartment.



## Step 14



- Turn the computer over and open the screen. This provides access to the screen hinges.
- The keyboard switch cover is attached to the computer with a series of snaps. With a flathead screwdriver, pry up the switch cover until it pops free.

## Step 15



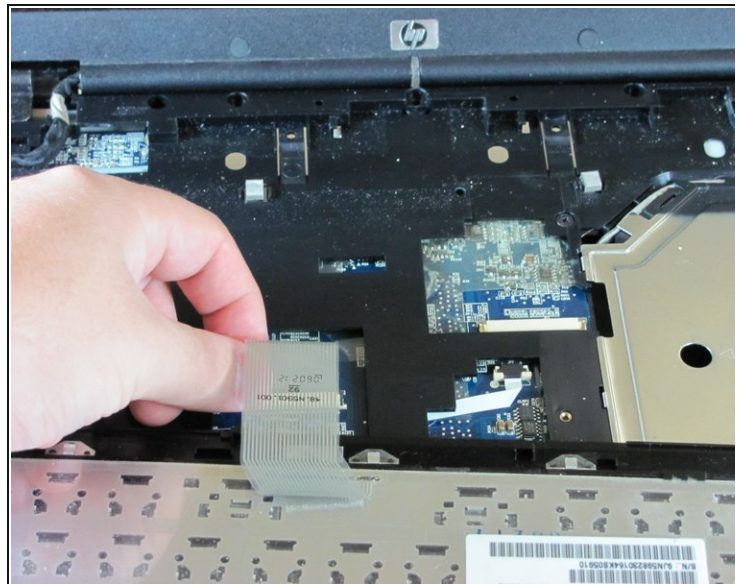
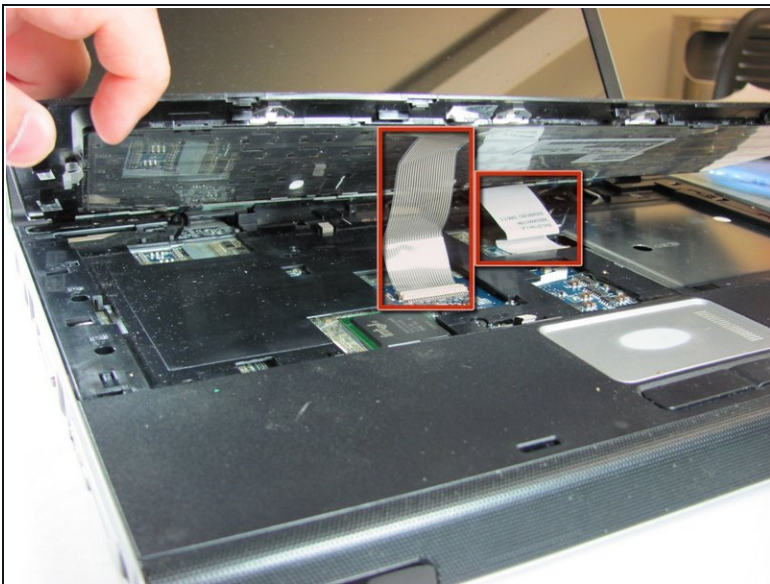
- Be careful not to bend the keyboard switch cover too far when removing it.

## Step 16



- Next, remove the keyboard. Push on the keyboard frame above the function keys and slide the keyboard toward the screen.

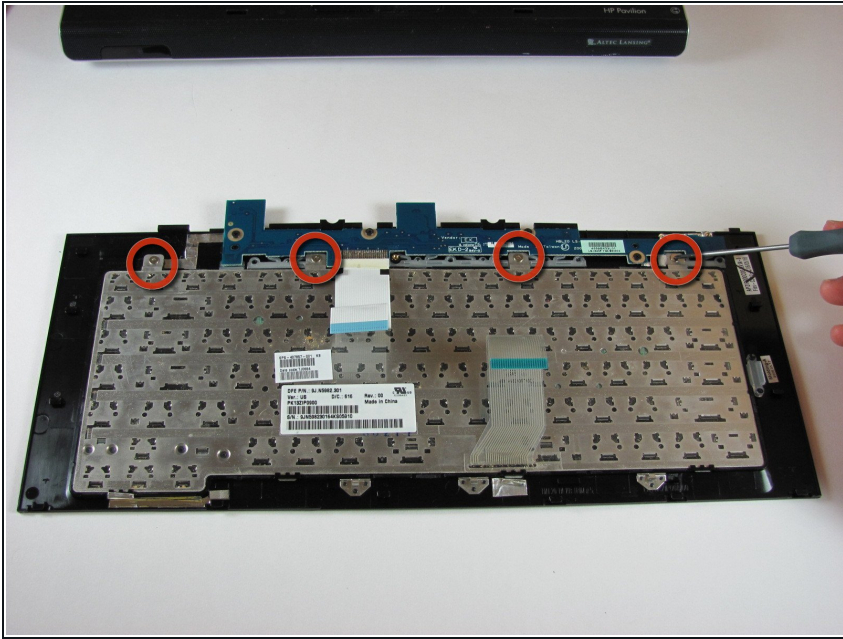
## Step 17



- Carefully lift the trackpad-side edge of the keyboard to reveal the LED and keyboard cable connectors.
- Detach the cable connectors from the computer by gripping each cable connector close to the computer contact point and pulling up gently.



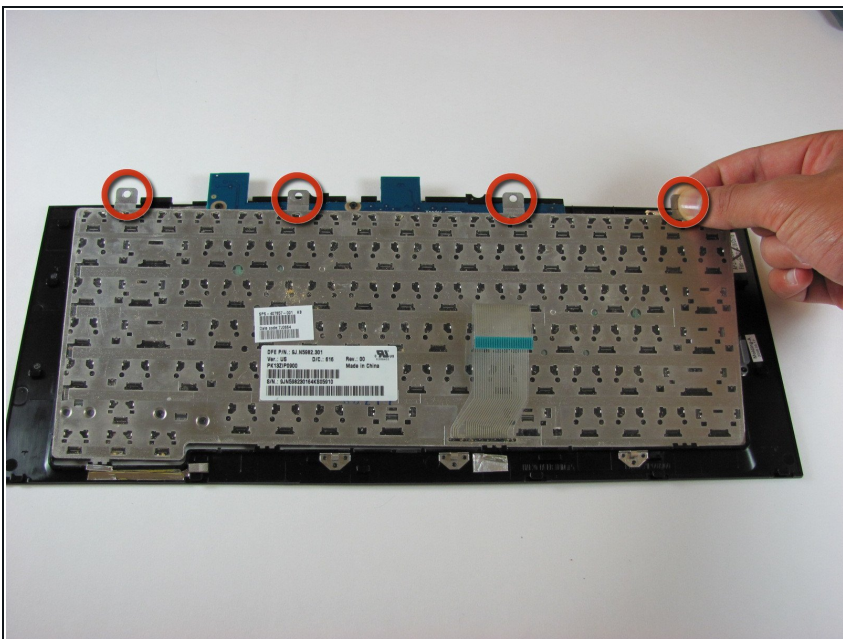
## Step 18



**i** This step is for replacing the keyboard only. If you are not replacing the keyboard, skip this step.

- Lay the keyboard face down.
- Remove the four 3.00mm screws that attach the keyboard to the keyboard frame.

## Step 19



**i** This step is for replacing the keyboard only. If you are not replacing the keyboard, skip this step.

- Lift the keyboard off the keyboard frame.

## Step 20 — Trackpad



- Remove the two 3.0mm screws on the side of the laptop shown.
- Remove the one 5.0mm screw in the hard drive compartment.

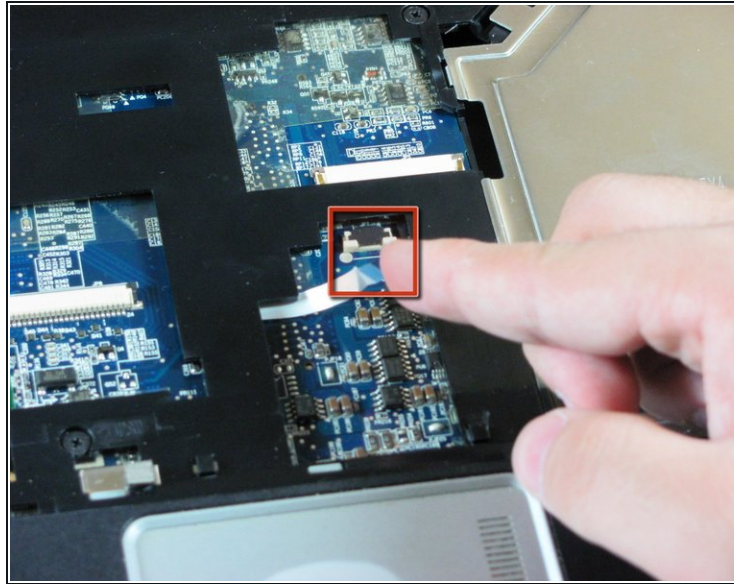
## Step 21



- Remove the eight 10mm screws securing the top cover to the laptop.

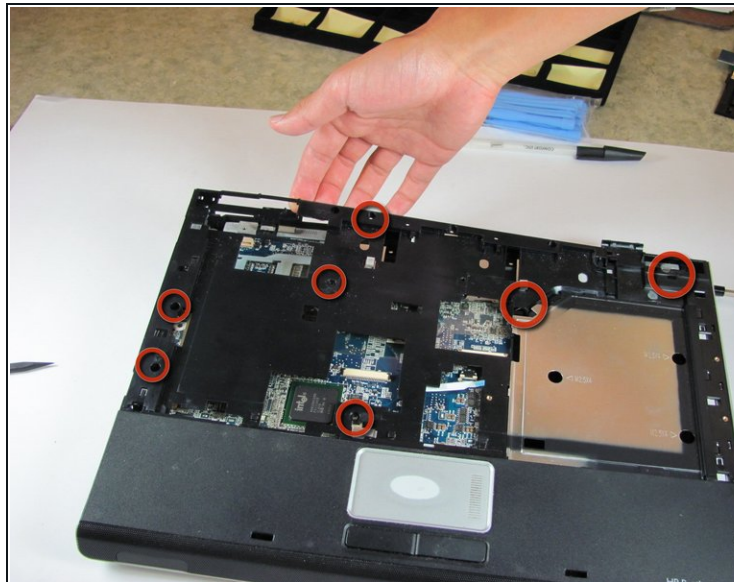
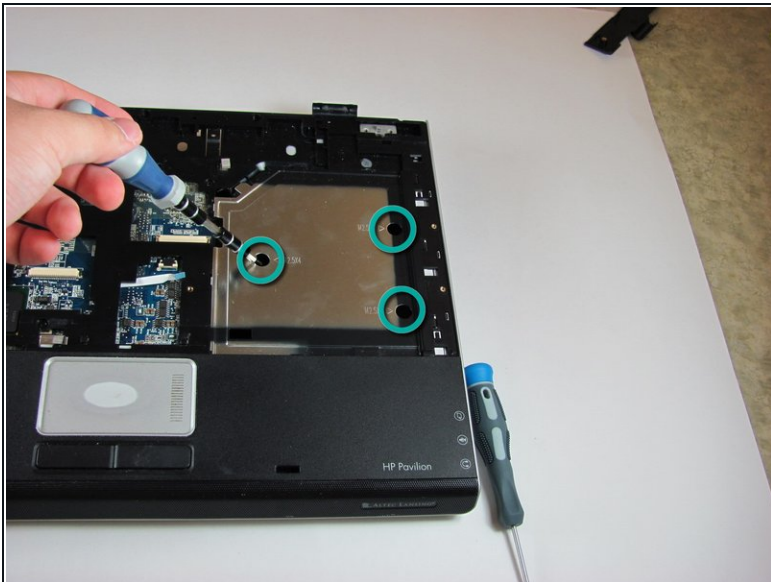


## Step 22



- Flip the computer over and disconnect the Touchpad Cable.

## Step 23



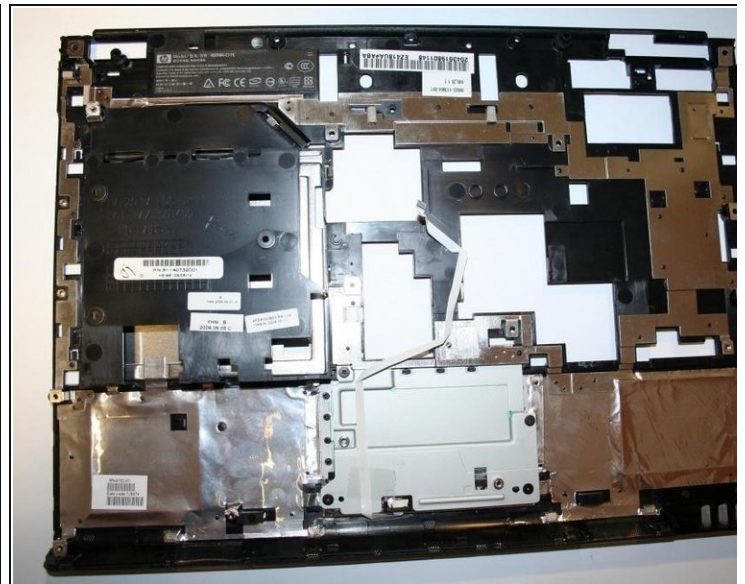
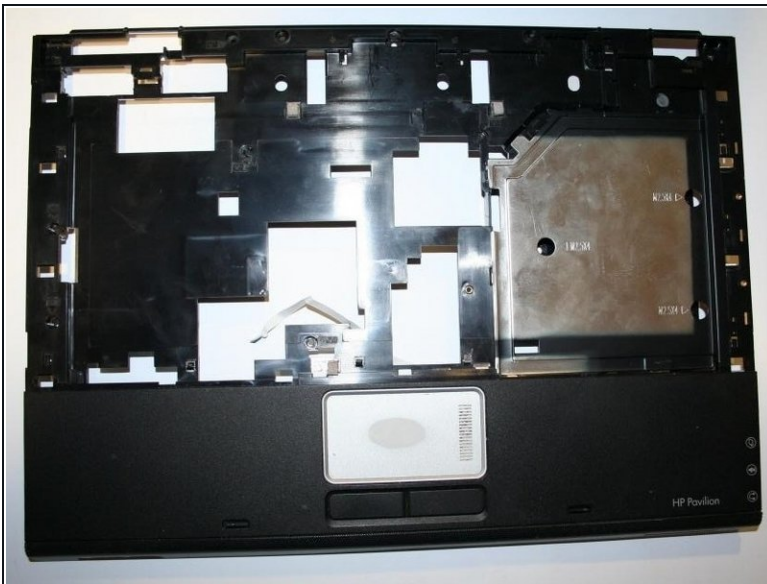
- Remove the silver 5.0mm screws Located in the silver area of the top cover
- Remove the seven 10.0mm screws located on the top cover.

## Step 24



- Lift off the top cover and remove it. Lift off from the back.

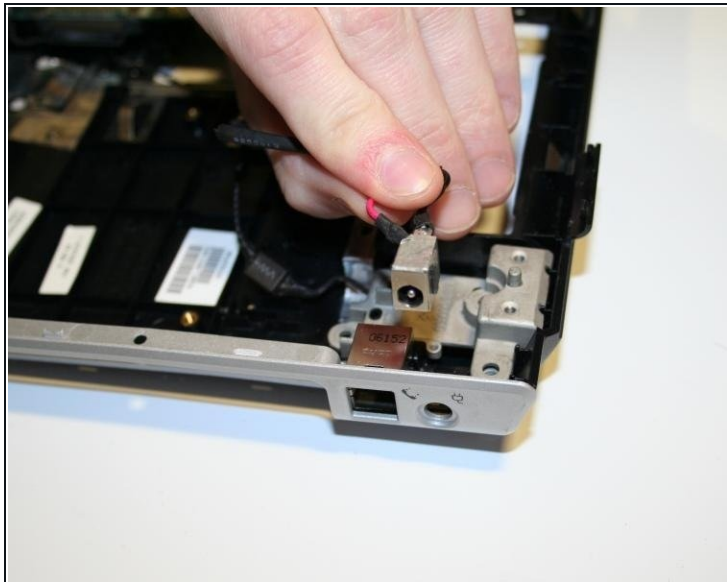
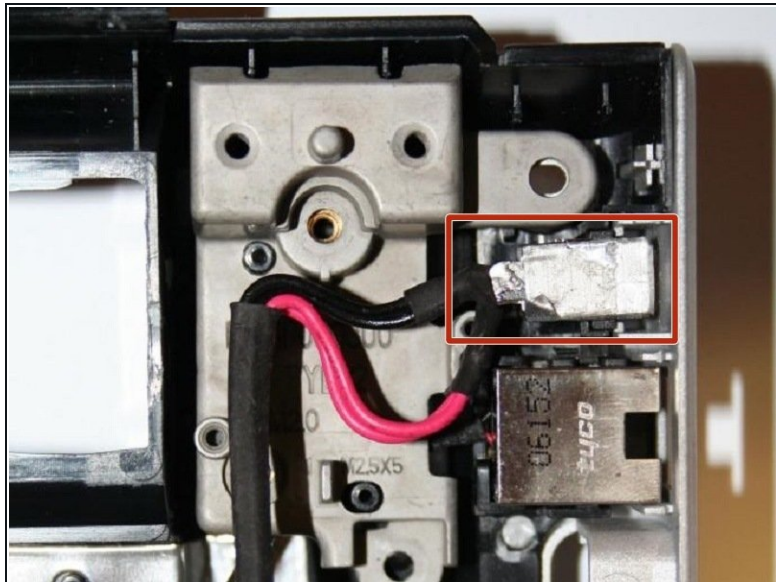
## Step 25



- Congratulations! You're ready to install the new assembly and reassemble your laptop!



## Step 26 — Power Supply Port



- Locate the Power Supply Port
- Lift the port up to remove it from its seated position

To reassemble your device, follow these instructions in reverse order.