



Toshiba Satellite L655D-S5095 Screen Replacement

Carefully follow the instructions and keep an eye out for placement of important connections stressed in the photos.

Written By: Christopher Camara





TOOLS:

- [Phillips #1 Screwdriver](#) (1)
 - [iFixit Opening Tools](#) (1)
-

Step 1 — Battery



- Locate the battery locks on the bottom of the laptop.
- Slide the right lock outwards, until it locks into place.
- Slide and hold the left lock outwards and hold it in place.

Step 2



- While holding the lock in place, slide the battery out towards you.

Step 3 — Keyboard



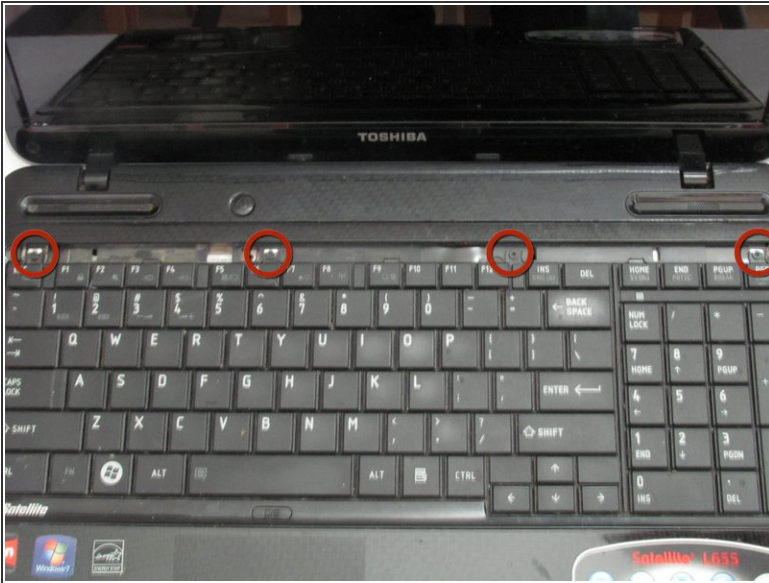
- Using a #1 Phillips screwdriver, remove the 5.8 mm screw in the battery slot.

Step 4



- Use a plastic opening tool to pry off the plastic panel above the keyboard.

Step 5



- Unscrew the four 3.7 mm screws at the top of the keyboard using a #1 Phillips screwdriver.

Step 6



- Slowly lift the keyboard out, up and towards the screen.

⚠ Do not try to remove the keyboard completely because it is still attached to the motherboard.

Step 7



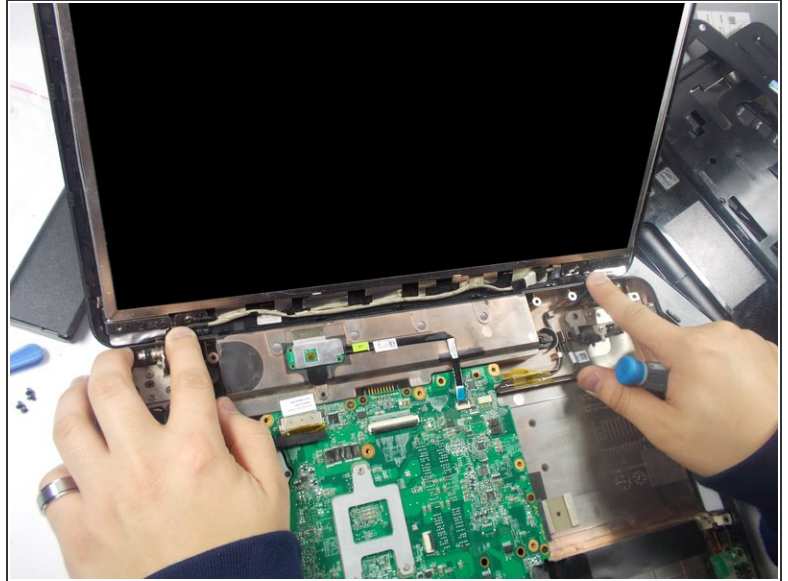
- Using a plastic opening tool, flip the ZIF connector up to release the ribbon and the keyboard.

Step 8 — Screen



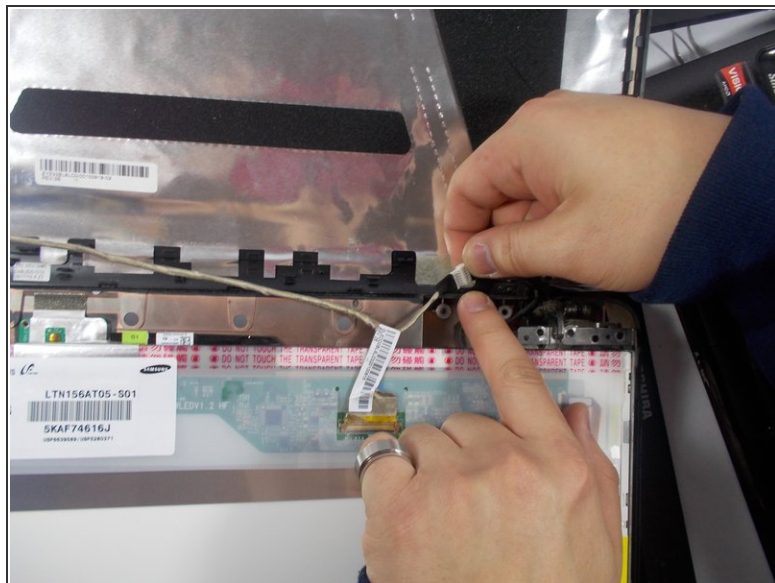
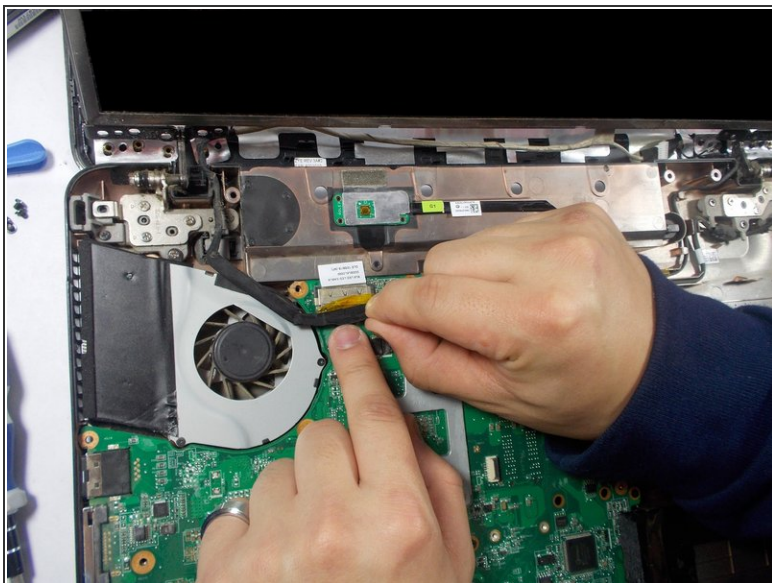
- Remove stickers from four corners of laptop.
- Remove screws underneath stickers.

Step 9



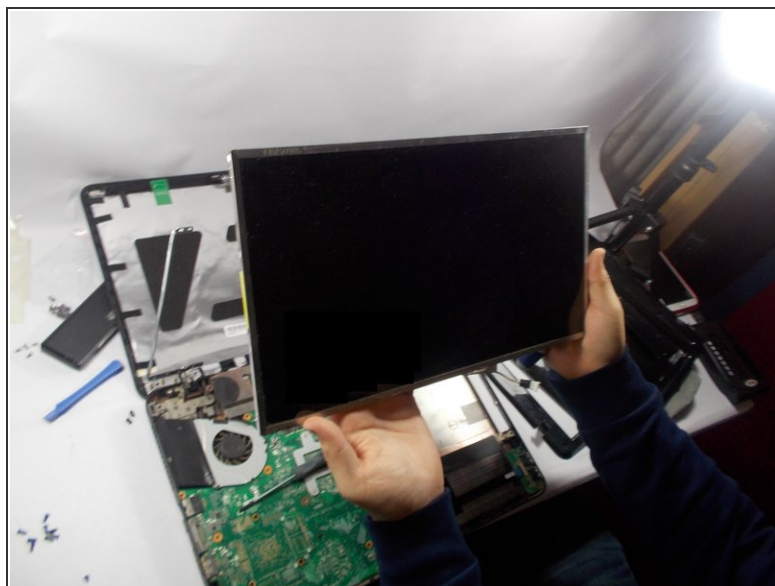
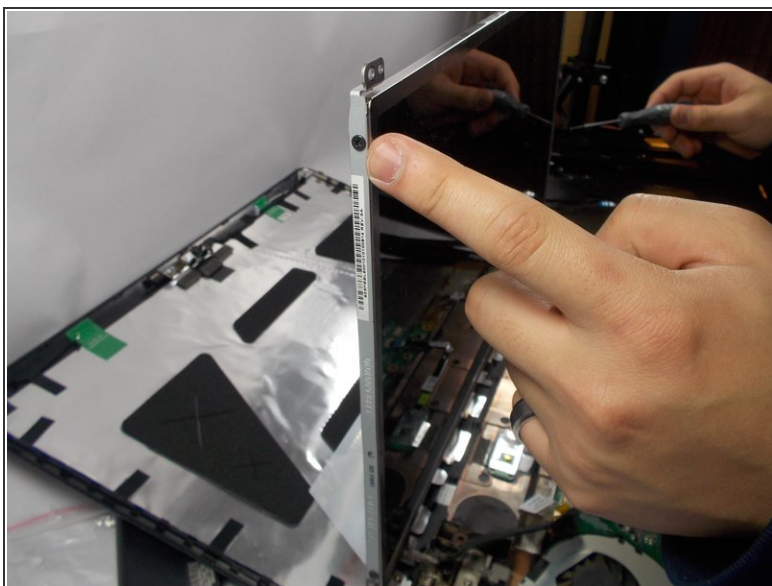
- Use plastic opening tool to pry the hinges off.
- Remove the screen cover.
- Unscrew the six screws on the bottom of the screen near the top of the hinges.

Step 10



- Remove cable located next to the fan.
- Fold down screen without screen back cover to remove cable as shown.

Step 11



- Unscrew both screws on each side of the screen.
- Remove the screen.

To reassemble your device, follow these instructions in reverse order.