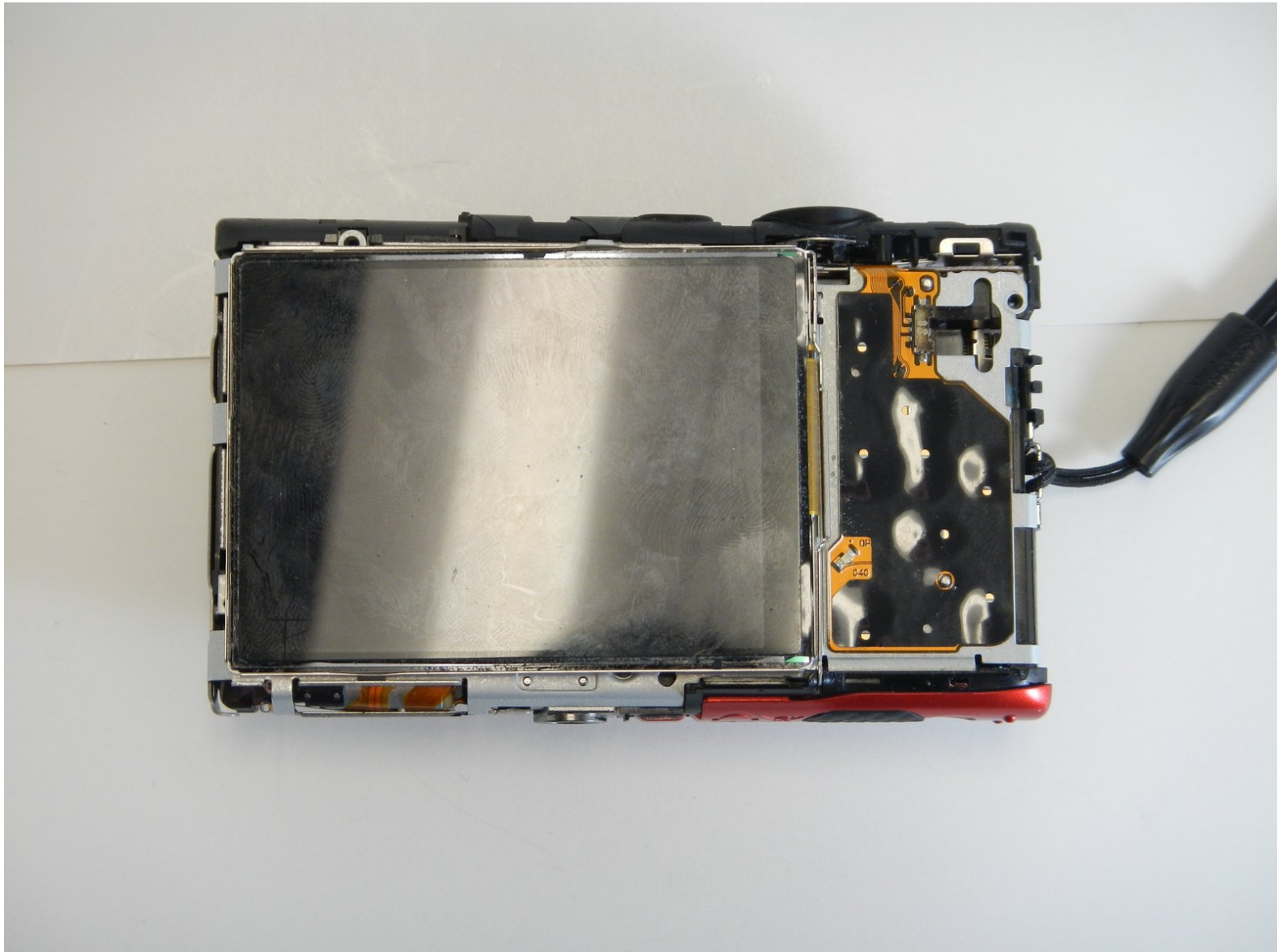




Canon PowerShot ELPH 300HS LCD Screen Replacement

Replacing the LCD screen on the back of your camera.

Written By: Kathryn Van Susante



INTRODUCTION

This will show you how to replace the LCD screen on the back of your camera.



TOOLS:

- [Spudger](#) (1)




PARTS:

- [Canon replacement LCD for PowerShot elph 300HS](#) (1)

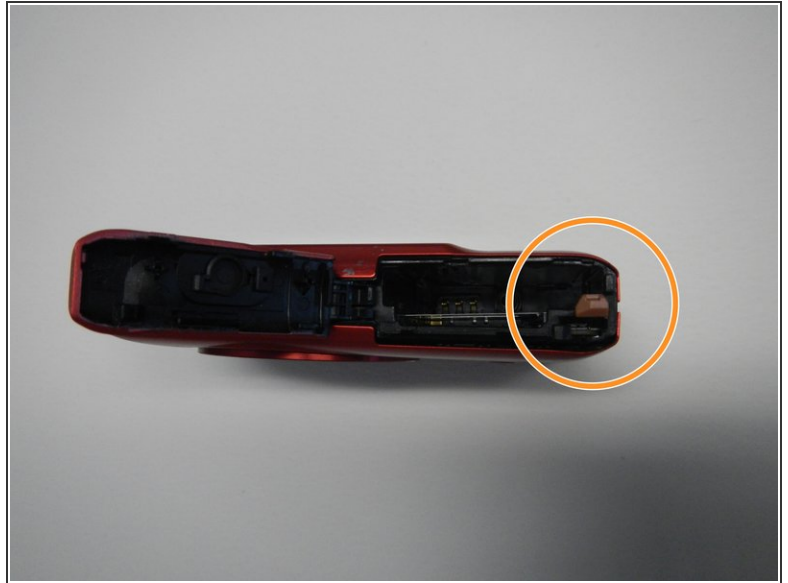
Step 1 — Safety First



 Before you begin taking apart your device, the first, and MOST IMPORTANT STEPS are to:

- Turn off your camera.
- Remove the battery to prevent risk of shock.

Step 2 — Remove the Battery



- Turn off your camera by pressing the power button, located on the top-center of the device.
- Locate the battery door on the bottom right area of the camera case.
- Place your finger firmly on the black rubber pad on the battery door and slide the door to the right to open it.
- Locate the orange battery release button beneath the battery door.
- Slide the battery release button downward to release the battery.

Step 3 — Left Side Screws



- ⚠ Be careful when removing screws, as they are stripped easily.
- Remove the two screws located on the left side of the camera case, using the Phillips screwdriver #00 (2.0 mm).

Step 4 — Bottom Screws



- Remove the two screws on the bottom of the camera located near the battery door (Phillips #00 screwdriver) (4.0 mm).

Step 5 — Right Side Screws



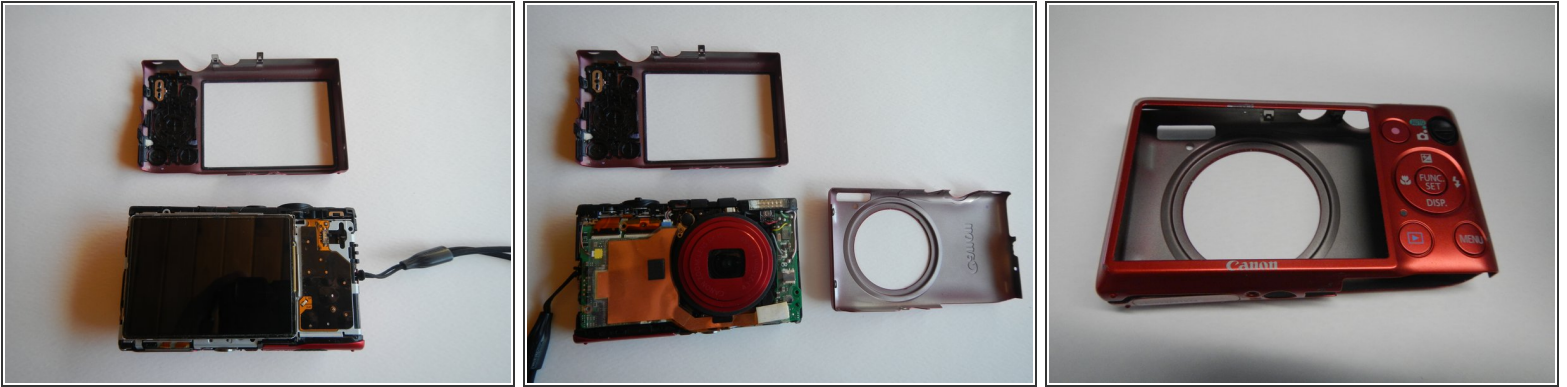
- Remove the screw located on the lower right side of the camera case (Phillips #00 screwdriver) (4.0 mm).
- Remove the HDMI A/V out port cover located on the upper right side of the camera.
- Remove the screw located just beneath the port cover removed in step 2. (Phillips #00 screwdriver) (2.0 mm).

Step 6



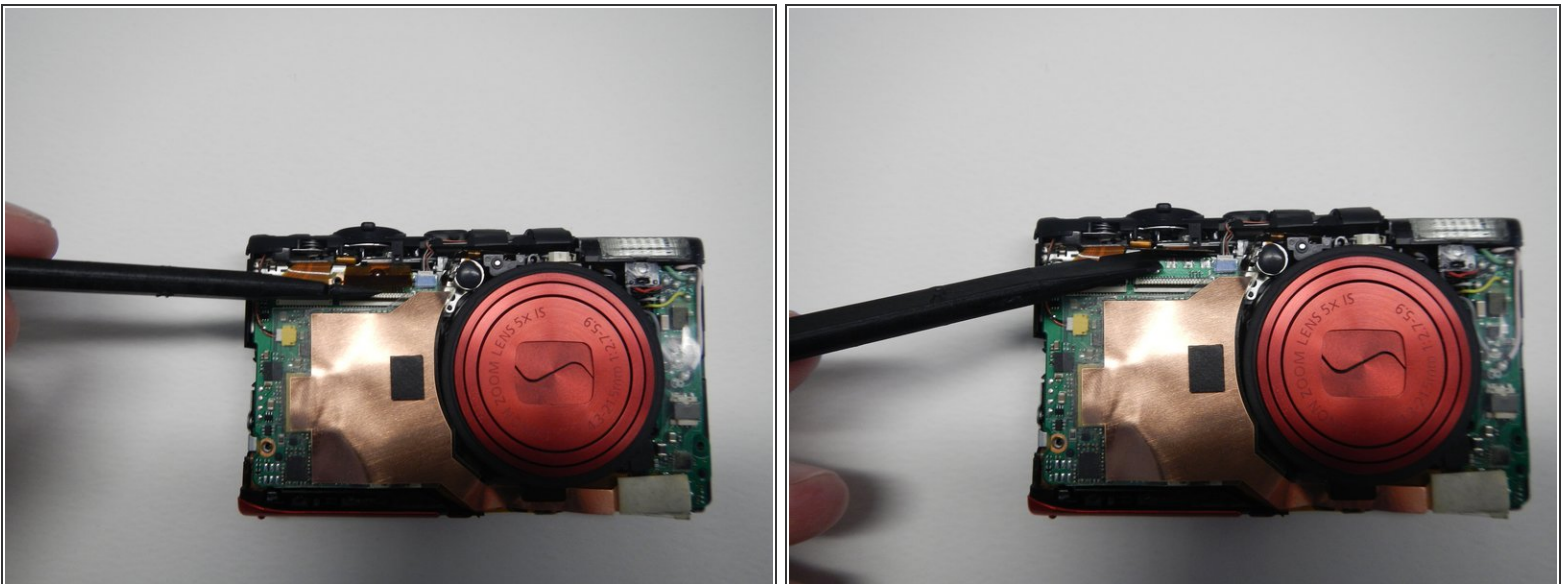
- Remove the back portion of the camera case to reveal the screw located on the top of the case.
- Remove the screw from the top of camera case, located next to the shutter button (Phillips #00 screwdriver) (1.5 mm).

Step 7 — Remove the Case from the Camera



- Carefully pry the case apart at the seam, using your fingers.
- ⚠ Be careful not to over bend the small metal projections located along the seams. These aid in holding the case together.
- ⚠ Be careful not to allow dust or other particles to settle inside of the camera while the case is detached. This can cause functional issues in the future.

Step 8 — LCD Screen



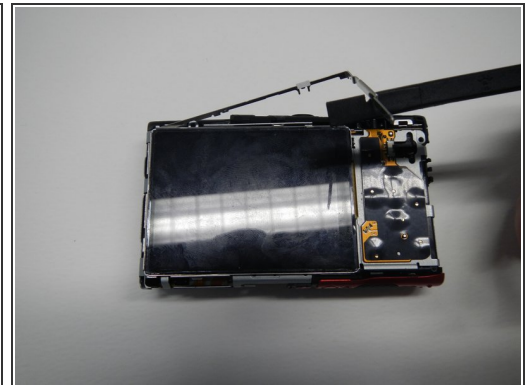
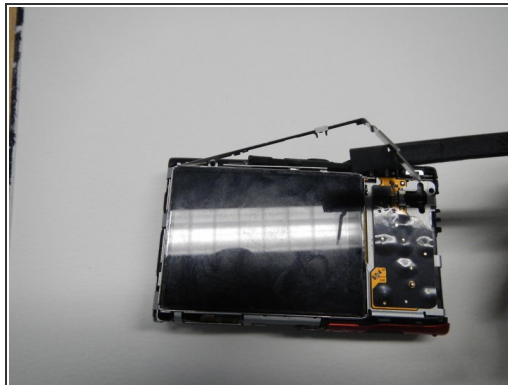
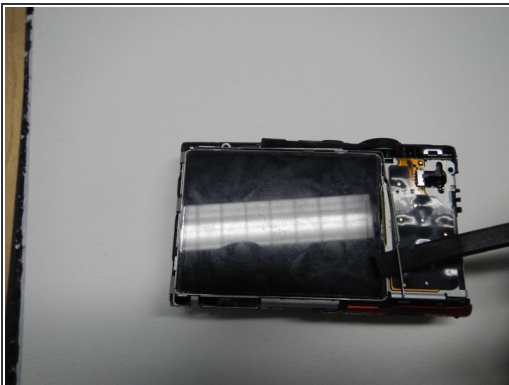
- Disconnect the copper ribbon next to the blue port on the motherboard

Step 9



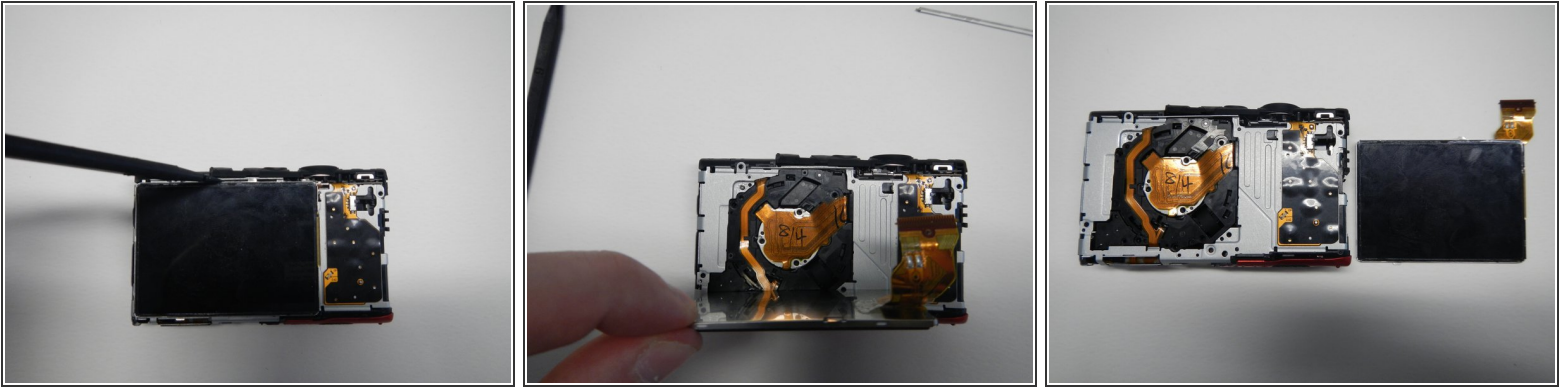
- To remove ribbon cable, gently lift the black tab with a flat head screwdriver. Lift from the top of the camera towards the bottom. This releases the cable. Be gentle, as the cables are fragile.

Step 10



- Remove the L shaped bracket around the top and right side of the LCD screen

Step 11



- Insert the flat side of the spudger tool carefully on the top of the LCD screen and lift the screen free

To reassemble your device, follow these instructions in reverse order.