



Durofix RV332 Control Button Replacement

If your Durofix RV332 Cordless Li-ion...

Written By: Tyler Vincent



INTRODUCTION

If your Durofix RV332 Cordless Li-ion Screwdriver isn't working properly due to the yellow control button being stuck or broken, use this guide to replace the control button.

If you would like to double check the model number on your tool; You can identify the model by looking at the side of the tool. One side will have the Durofix logo, and the other side will [display the model number on a sticker](#).

In this guide, you will go step-by-step through the simple process of replacing the control button. The control button is a crucial part of this tool as it's what spins the motor when pressed by the user.

Before using this guide, inspect in the cracks of the control button to check for debris or stickiness that might be restricting the control button from being pushed down. If you believe this to be the case then this guide will also work for you, but instead of replacing the control button; clear the debris and reattach the existing control button.

TOOLS:

[Phillips #0 Screwdriver](#) (1)

[Spudger](#) (1)

[iFixit Opening Tool](#) (1)

Step 1 — Control Button



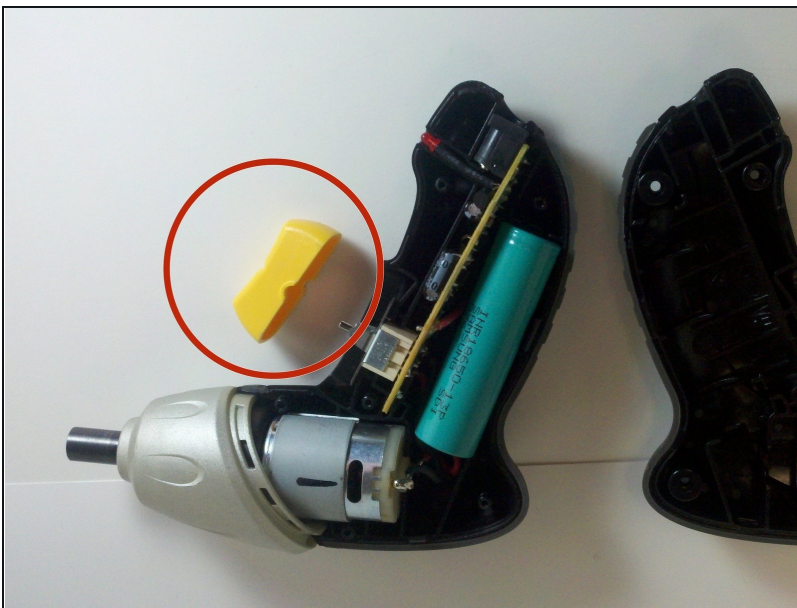
- Remove the six 13 mm casing screws with a #0 Phillips screwdriver.

Step 2



- Separate screwdriver casing halves with a plastic opening tool.

Step 3



- Remove the yellow plastic control button from the screwdriver casing.
- With the defective button removed, replace with a new control button.

To reassemble your device, follow these instructions in reverse order.